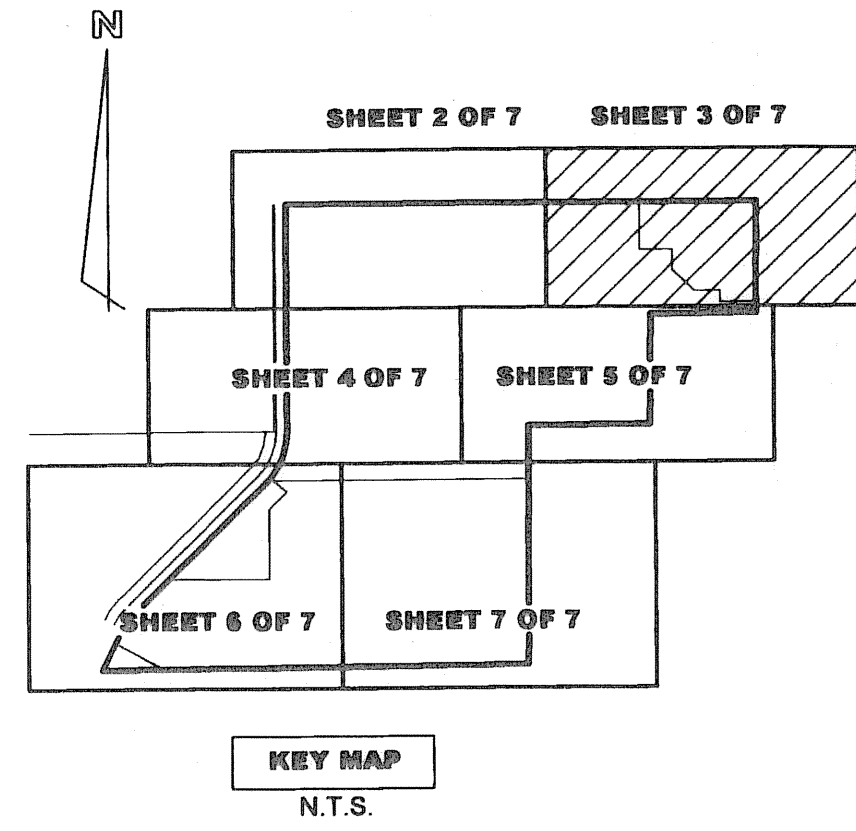
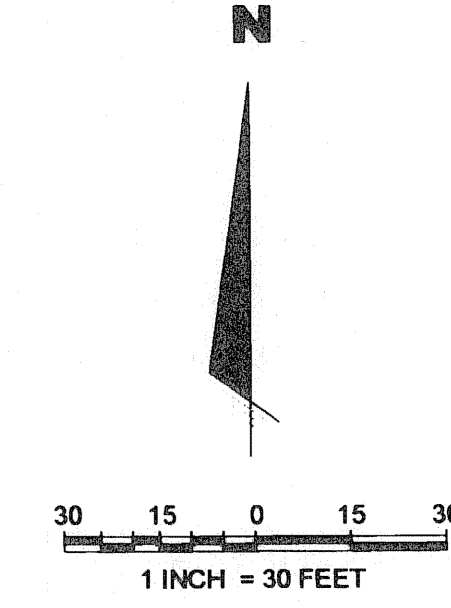


# VILLAGE AT DELRAY

A REPLAT OF TRACTS A, C, D, F AND G  
AUBURN TRACE, (PLAT BOOK 64 AT PAGE 184 THROUGH PAGE 186)  
BEING IN SECTION 20, TOWNSHIP 46 SOUTH, RANGE 43 EAST,  
CITY OF DELRAY BEACH, PALM BEACH COUNTY, FLORIDA

JULY 2008

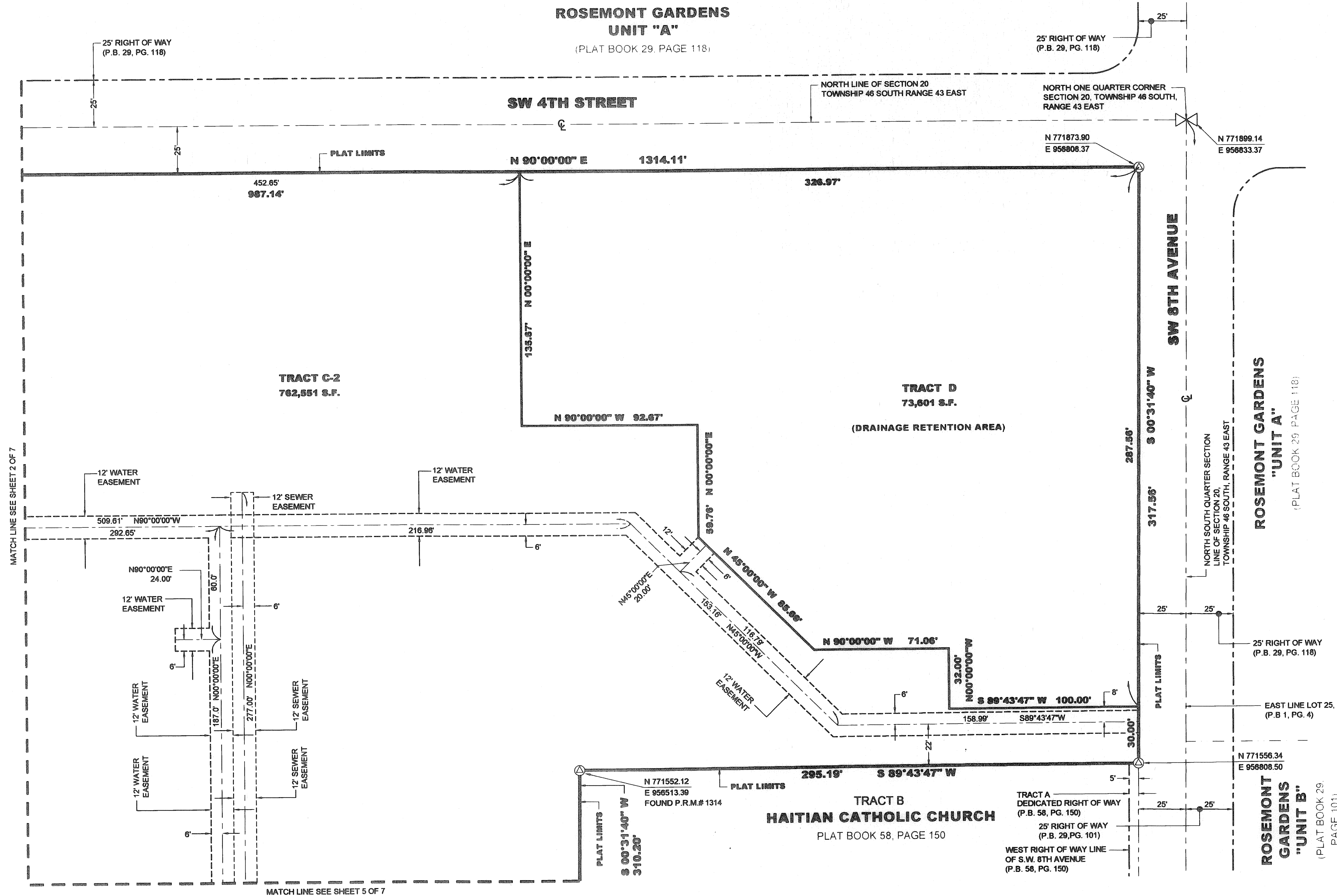


**LEGEND:**

P.B.	PLAT BOOK
PG.	PAGE
O.R.B.	OFFICIAL RECORD BOOK
HWS	HELLER-WEAVER AND SHEREMETA
S.F.	SQUARE FEET
R	RADIUS OF CURVE
L	LENGTH OF CURVE
Δ	DELTA ANGLE OF CURVE
C1	REFER TO CURVE TABLE
F.P.L.	FLORIDA POWER AND LIGHT CO.
U.E.	UTILITY EASEMENT
G.U.E.	GENERAL UTILITY EASEMENT
---	SEWER EASEMENT LINE
---	WATER EASEMENT LINE
---	GENERAL UTILITY EASEMENT LINE

KEY MAP  
N.T.S.

SHEET 3 OF 7



**Heller - Weaver and Sheremeta, inc.**  
Engineers ... Surveyors and Mappers  
310 S.E. 1st Street, Suite 4  
Delray Beach, Florida 33483  
Phone: (561) 243-8700  
Fax: (561) 243-8777

ROSEMONT GARDENS "UNIT A"  
(PLAT BOOK 29, PAGE 118)

ROSEMONT GARDENS "UNIT B"  
(PLAT BOOK 29, PAGE 101)

TRACT A  
DEDICATED RIGHT OF WAY  
(P.B. 58, PG. 150)  
25' RIGHT OF WAY  
(P.B. 29, PG. 101)  
WEST RIGHT OF WAY LINE  
OF S.W. 8TH AVENUE  
(P.B. 58, PG. 150)

TRACT B  
**HAITIAN CATHOLIC CHURCH**  
PLAT BOOK 58, PAGE 150

MATCH LINE SEE SHEET 5 OF 7

MATCH LINE SEE SHEET 2 OF 7