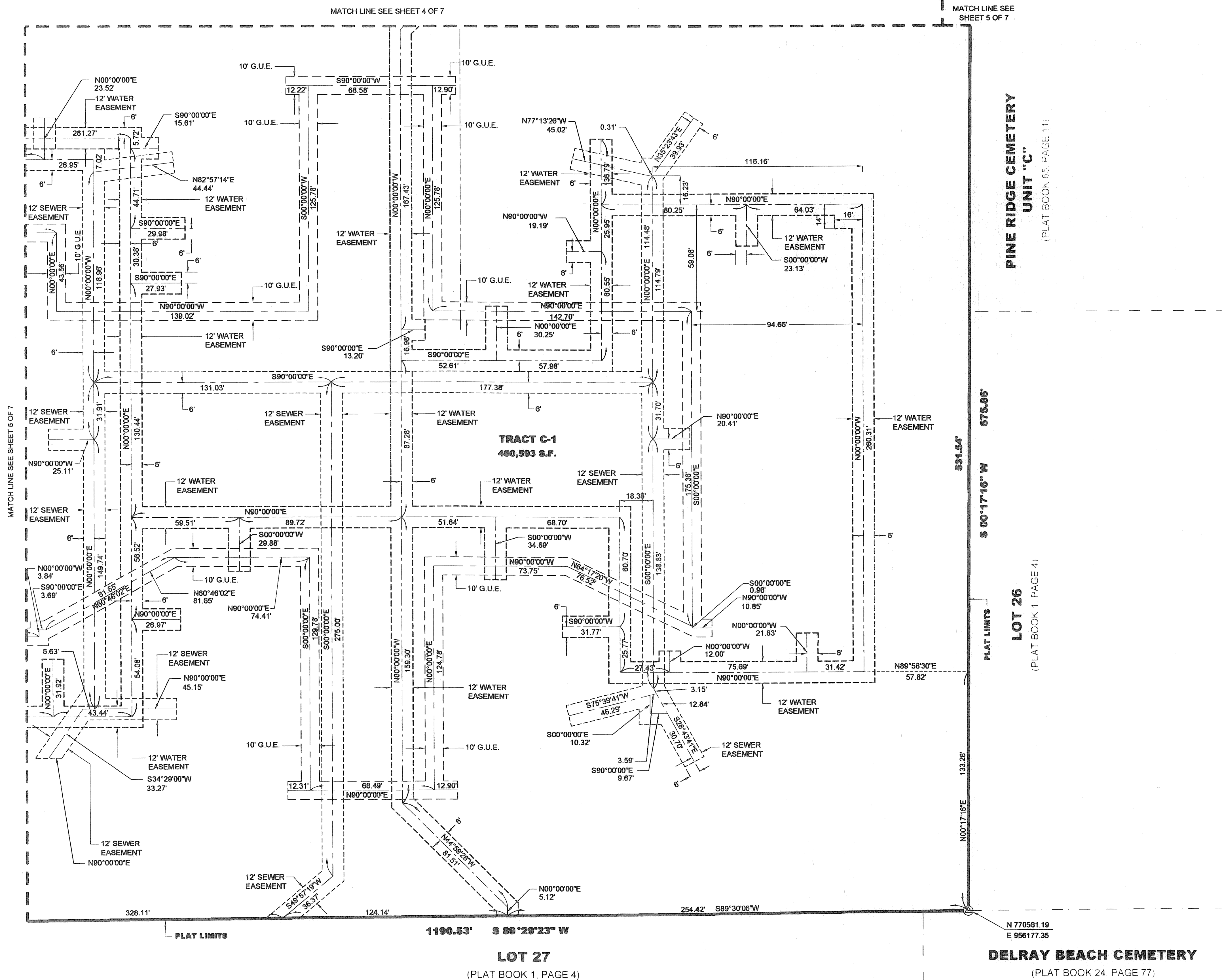


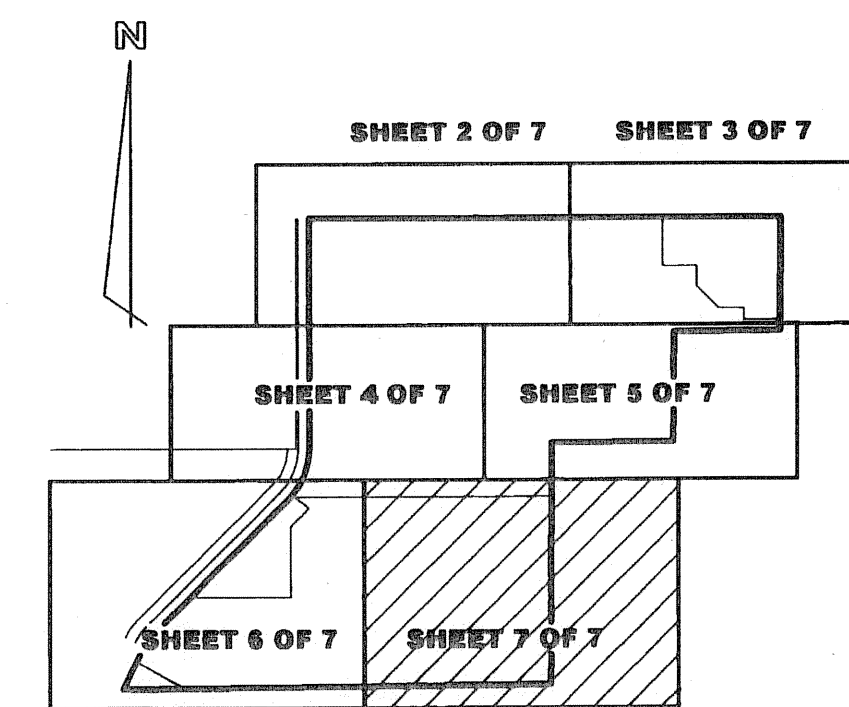
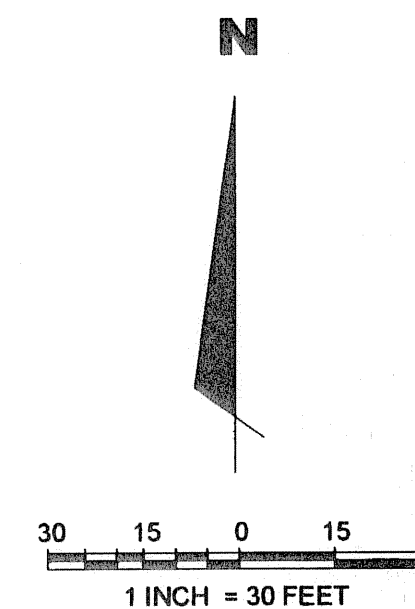
VILLAGE AT DELRAY

A REPLAT OF TRACTS A, C, D, F AND G
AUBURN TRACE, (PLAT BOOK 64 AT PAGE 184 THROUGH PAGE 186)
BEING IN SECTION 20, TOWNSHIP 46 SOUTH, RANGE 43 EAST,
CITY OF DELRAY BEACH, PALM BEACH COUNTY, FLORIDA

JULY 2008



SHEET 7 OF 7



KEY MAP
N.T.S.

LEGEND:

- P.B. PLAT BOOK
- PG. PAGE
- O.R.B. OFFICIAL RECORD BOOK
- HWS HELLER-WEAVER AND SHEREMETA
- S.F. SQUARE FEET
- R. RADIUS OF CURVE
- L. LENGTH OF CURVE
- Δ DELTA ANGLE OF CURVE
- C1 REFER TO CURVE TABLE
- F.P.L. FLORIDA POWER AND LIGHT CO.
- U.E. UTILITY EASEMENT
- G.U.E. GENERAL UTILITY EASEMENT
- SEWER EASEMENT LINE
- WATER EASEMENT LINE
- GENERAL UTILITY EASEMENT LINE



L.B. NO. 0003449

Heller - Weaver and Sheremeta, inc.
Engineers ... Surveyors and Mappers

310 S.E. 1st Street, Suite 4
Delray Beach, Florida 33483
Phone: (561) 243-8700
Fax: (561) 243-8777

DELRAY BEACH CEMETERY
(PLAT BOOK 24, PAGE 77)

LOT 26
(PLAT BOOK 1, PAGE 4)

LOT 27
(PLAT BOOK 1, PAGE 4)