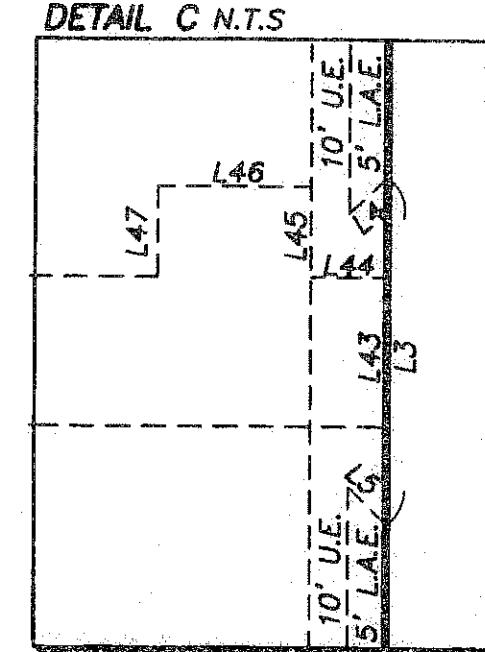
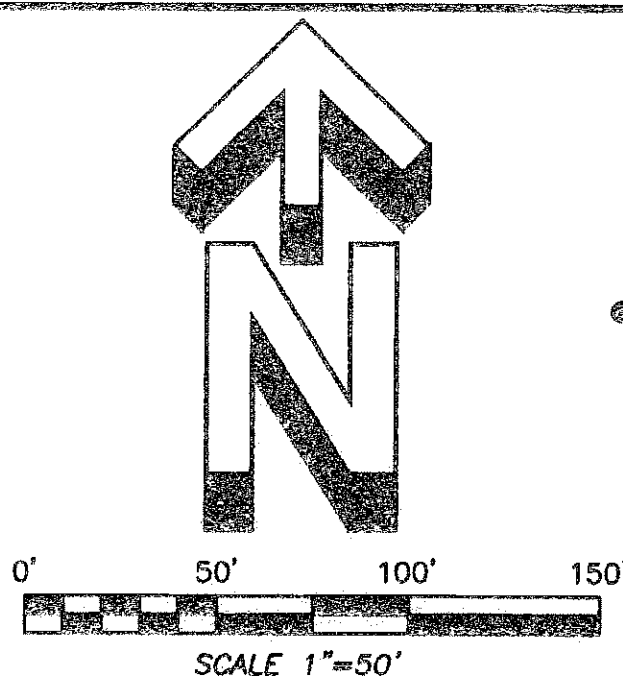
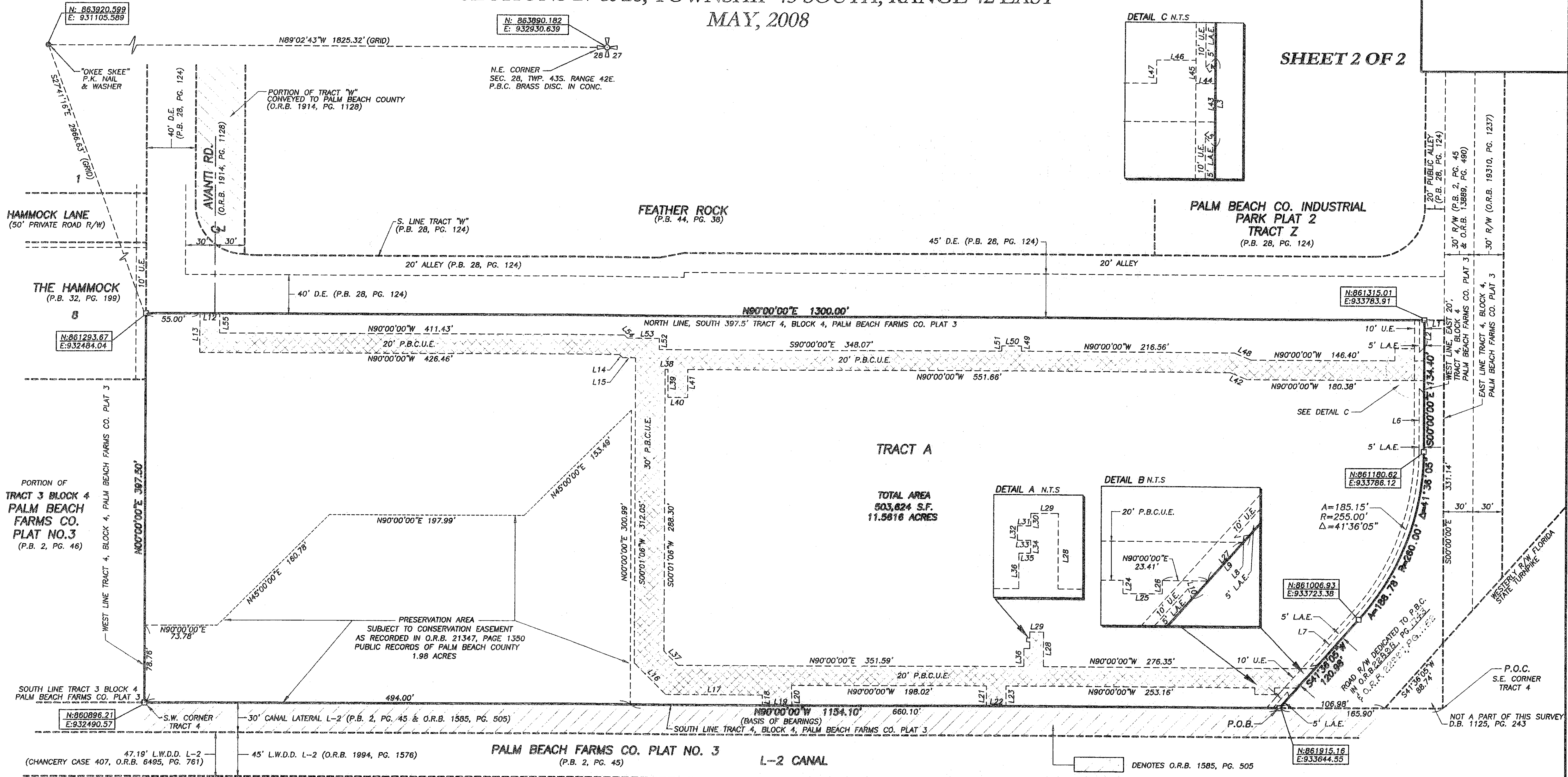


JOG COMMERCE PARK, MUPD

BEING A REPLAT OF A PORTION OF TRACT 4, BLOCK 4, OF PALM BEACH FARMS CO.
PLAT NO. 3, ACCORDING TO THE PLAT THEREOF RECORDED IN PLAT BOOK 2, PAGES
45 TO 54, OF THE PUBLIC RECORDS OF PALM BEACH COUNTY, FLORIDA,
SECTIONS 27 & 28, TOWNSHIP 43 SOUTH, RANGE 42 EAST
MAY, 2008



SHEET 2 OF 2



L.A.E. LINE TABLE

LINE	BEARING	DISTANCE
L1	N 90°00'00" W	20.00'
L2	N 00°00'00" W	27.91'
L3	S 00°00'00" E	46.76'
L4	S 45°00'00" W	7.07'
L5	N 45°00'00" W	7.07'
L6	N 00°00'00" W	64.73'
L7	S 41°36'05" W	68.17'
L8	S 79°23'03" W	8.16'
L9	N 41°36'05" E	44.46'
L10	N 18°57'43" W	5.74'
L11	N 41°36'05" E	22.07'

P.B.C.U.E. LINE TABLE

LINE	BEARING	DISTANCE
L12	N 90°00'00" W	20.00'
L13	N 00°00'00" E	40.00'
L14	N 44°58'54" W	4.48'
L15	S 89°58'59" E	13.39'
L16	S 44°58'54" E	44.84'
L17	N 90°00'00" E	98.26'
L18	N 01°23'49" W	10.49'
L19	S 90°00'00" E	30.00'
L20	N 01°23'49" W	20.51'
L21	S 00°01'06" W	20.49'
L22	N 90°00'00" W	20.00'

P.B.C.U.E. LINE TABLE

LINE	BEARING	DISTANCE
L23	S 00°01'06" W	20.49'
L24	N 00°01'06" E	6.83'
L25	N 89°58'54" W	20.00'
L26	N 00°01'06" E	6.83'
L27	N 41°36'05" E	26.75'
L28	N 00°01'06" E	35.24'
L29	N 89°58'54" W	14.00'
L30	N 00°01'06" E	6.42'
L31	S 89°58'54" E	3.33'
L32	N 00°01'06" E	4.00'
L33	S 89°58'54" E	3.33'

P.B.C.U.E. LINE TABLE

LINE	BEARING	DISTANCE
L34	N 00°01'06" E	6.58'
L35	S 89°58'54" E	6.00'
L36	N 00°01'06" E	18.24'
L37	S 44°58'54" E	20.08'
L38	N 90°00'00" W	3.05'
L39	N 00°01'06" E	28.42'
L40	N 89°58'54" W	20.00'
L41	N 00°01'06" E	28.43'
L42	N 67°29'58" W	18.29'
L43	N 00°00'00" E	20.00'
L44	S 90°00'00" E	10.00'

P.B.C.U.E. LINE TABLE

LINE	BEARING	DISTANCE
L45	N 00°01'06" E	12.33'
L46	N 89°58'54" W	20.00'
L47	N 00°01'06" E	12.33'
L48	N 67°29'58" W	18.29'
L49	N 00°01'06" E	5.33'
L50	N 89°58'54" W	20.00'
L51	N 00°01'06" E	5.33'
L52	S 00°01'06" W	11.33'
L53	N 90°00'00" W	32.47'
L54	N 44°58'54" W	4.48'
L55	N 00°00'00" E	20.00'

JOG COMMERCE PARK, MUPD



FILED:	JOB NO.: 03-1079W	P.B. WP102 PG. 7
OFFICE: K.S.	DATE: MAY, 2008	DRAW. NO. 03-1079-9
CHKD: C.W.	REF: 03-1079-9.DWG	SHEET 2 OF 2