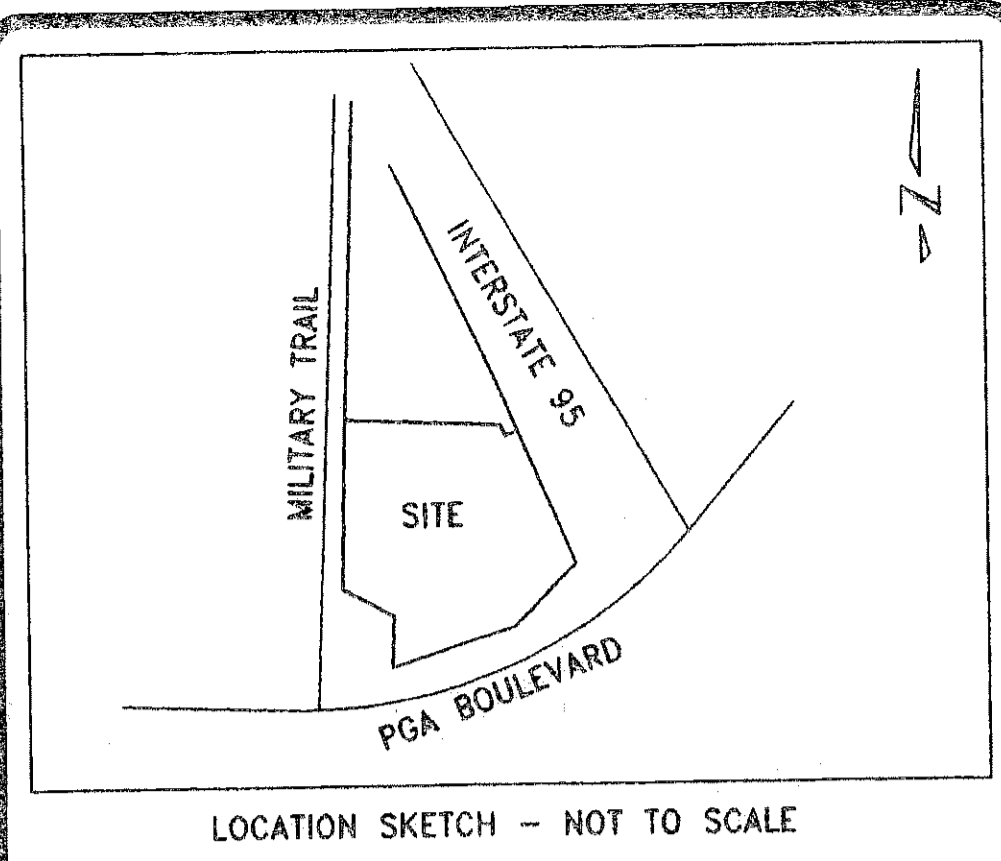


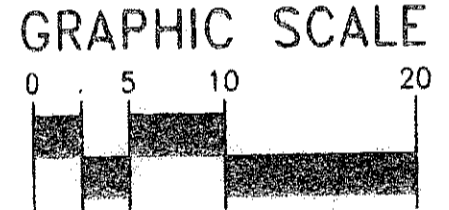
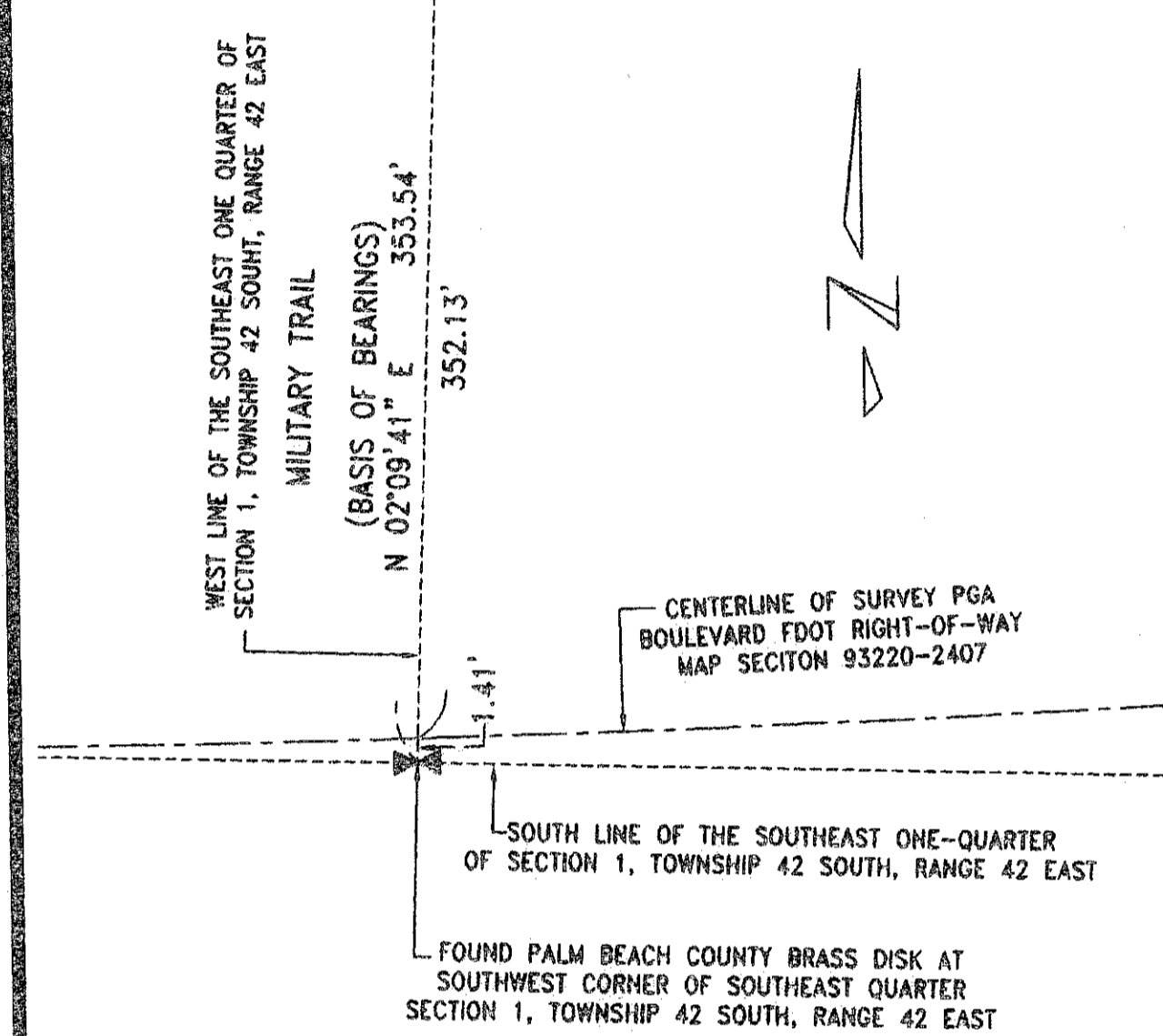
STATE OF FLORIDA
 COUNTY OF PALM BEACH
 THIS PLAT WAS FILED
 FOR RECORD AT _____ M.
 THIS DAY OF _____, 200__
 AND DULY RECORDED IN PLAT
 NO. _____ ON PAGES _____
 THRU _____
 SHARON R. BOCK
 CLERK AND COMPTROLLER
 BY _____ D.C.

LOT 1 REPLAT OF HOTEL COMPLEX PLAT REPLAT

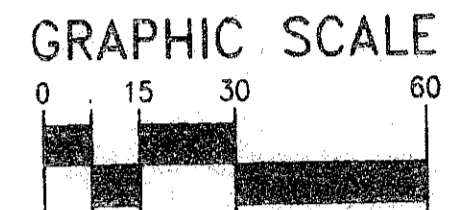
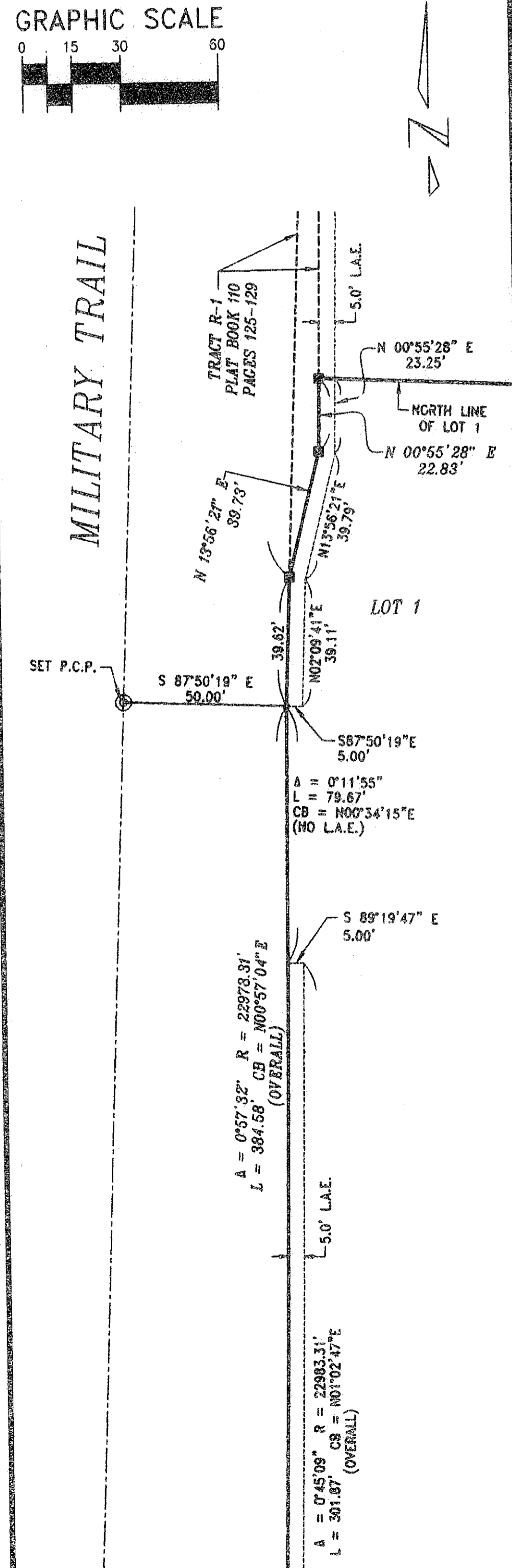
BEING A REPLAT OF LOT 1, HOTEL COMPLEX PLAT REPLAT, RECORDED IN PLAT
 BOOK 110, PAGES 125 THROUGH 129 PUBLIC RECORDS, PALM BEACH COUNTY,
 FLORIDA, SITUATE IN SECTION 1, TOWNSHIP 42 SOUTH, RANGE 42 EAST,
 CITY OF PALM BEACH GARDENS, PALM BEACH COUNTY, FLORIDA
 SHEET 3 OF 3
 FEBRUARY 2009



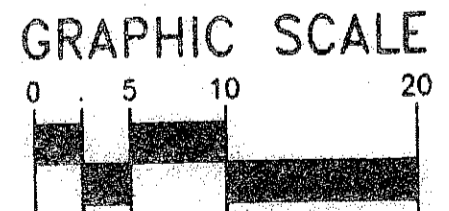
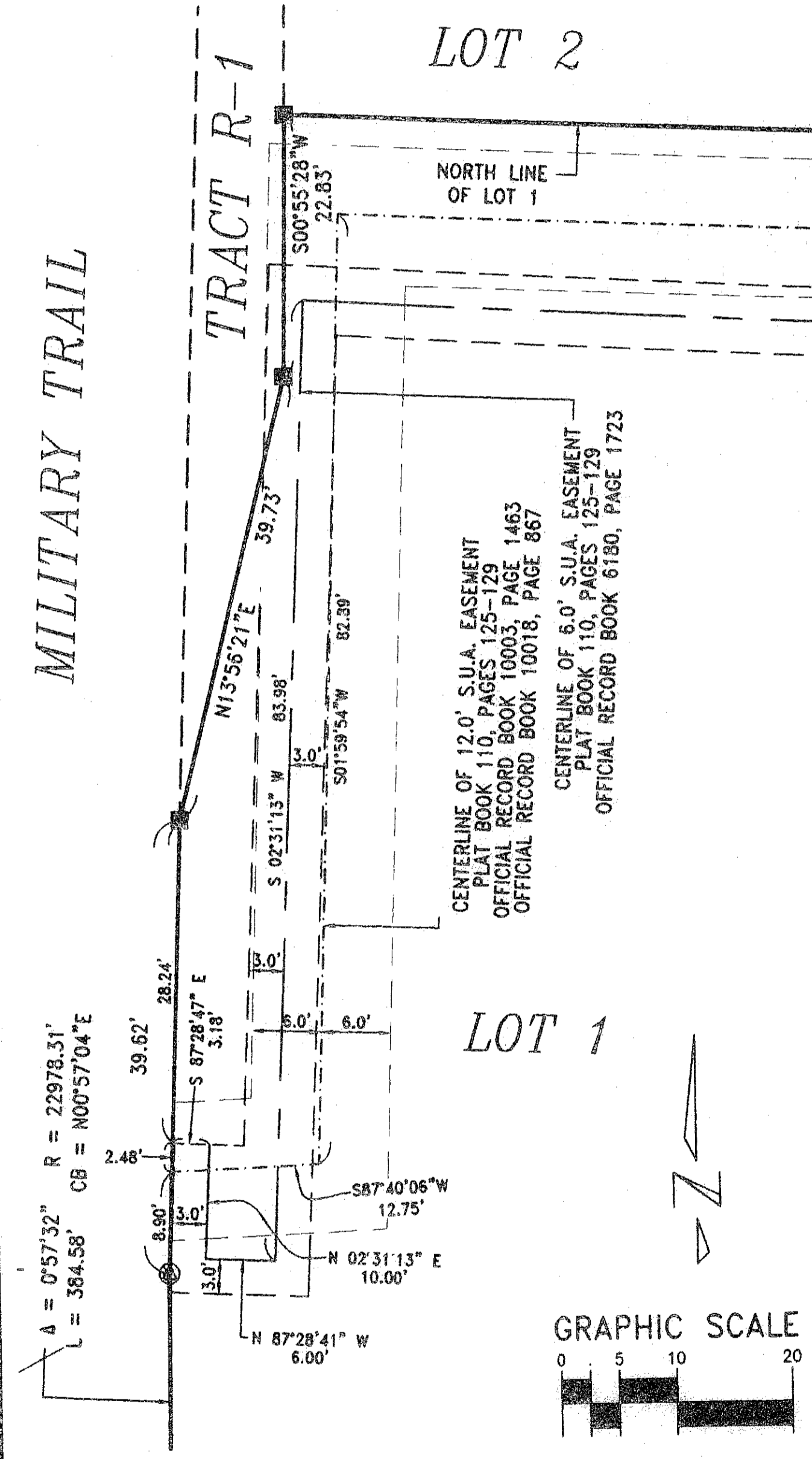
DETAIL 'A'
 1" = 10'



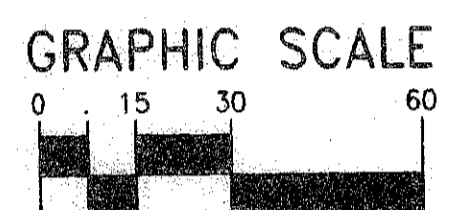
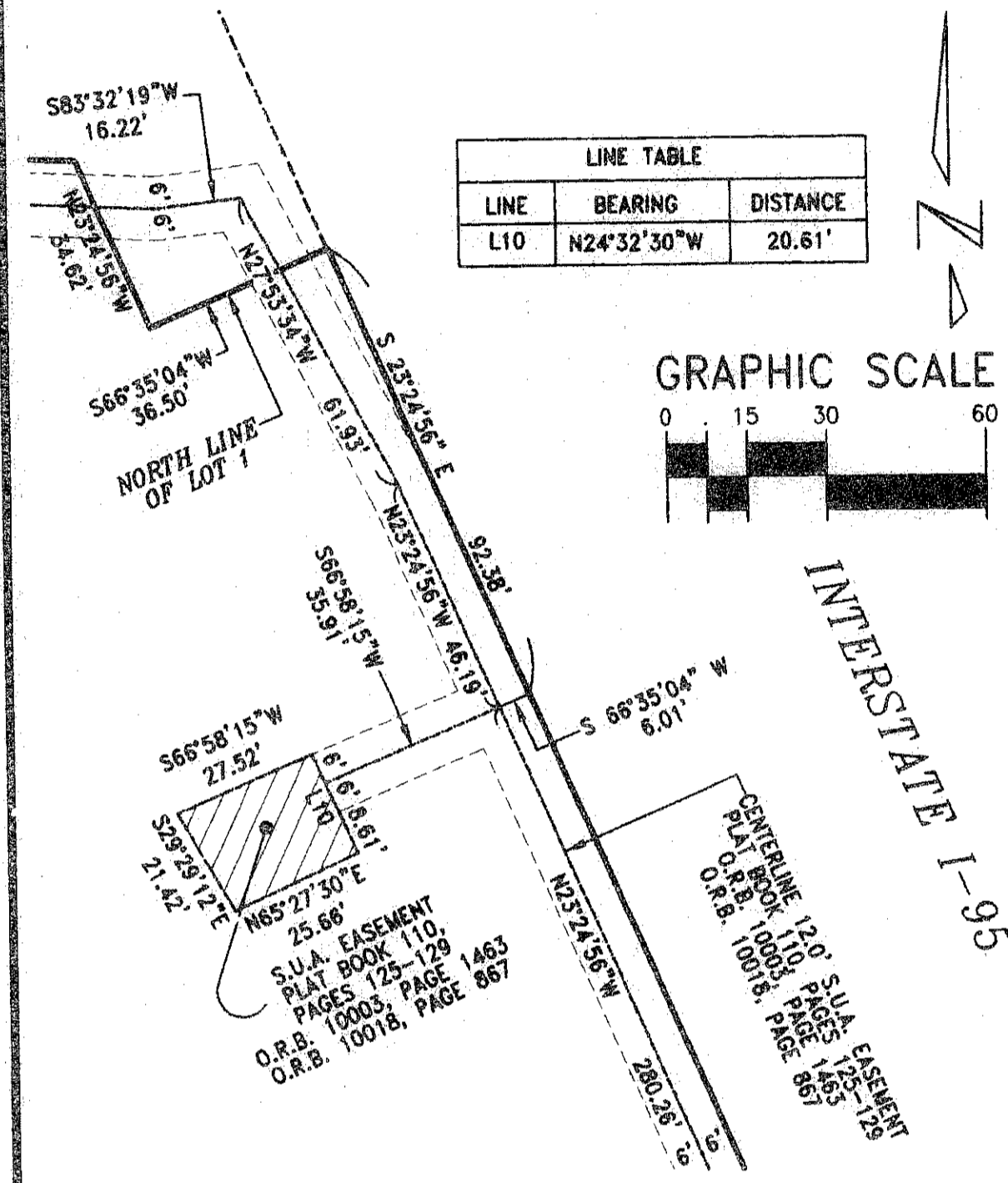
DETAIL 'B'
 1" = 30'



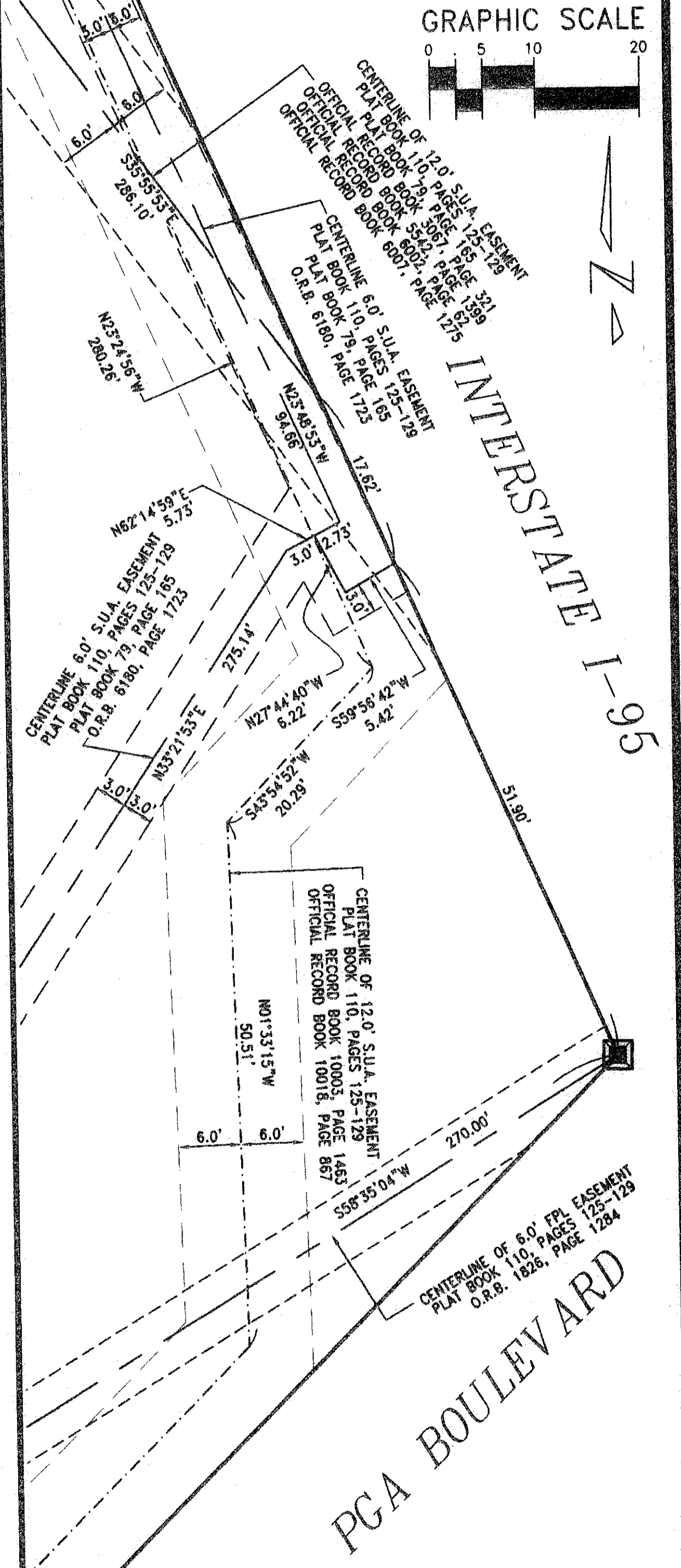
DETAIL 'C'
 1" = 10'



DETAIL 'D'
 1" = 30'



DETAIL 'E'
 1" = 10'



ABBREVIATIONS:

- = 4"x4" CONCRETE MONUMENT STAMPED "P.R.M. LB4897" OR AS NOTED.
- ⊙ = MAG NAIL & DISK STAMPED "P.R.M. LB4897"
- P.R.M. = PERMANENT REFERENCE MONUMENT
- C.O.M. = CONC. MONUMENT
- C/L = CENTERLINE
- R = RADIUS
- L = ARC LENGTH
- Δ = DELTA
- CB = CHORD BEARING
- P.C. = POINT OF CURVATURE
- P.T. = POINT OF TANGENCY
- STA. = STATION
- SUA = SEACOAST UTILITY AUTHORITY
- FDOT = FLORIDA DEPARTMENT OF TRANSPORTATION
- W.L.E. = WATER LINE EASEMENT
- U.E. = UTILITY EASEMENT
- N.P.B.C.I.D. = NORTHERN PALM BEACH COUNTY IMPROVEMENT DISTRICT
- FPL = FLORIDA POWER & LIGHT
- L.A.E. = LIMITED ACCESS EASEMENT
- L.B.E. = LANDSCAPE BUFFER EASEMENT
- L.M.E. = LAKE MAINTENANCE EASEMENT
- LB = LICENSED BUSINESS
- ORB = OFFICIAL RECORD BOOK
- PB = PLAT BOOK
- P.C. = PAGE
- P.C.P. = PERMANENT CONTROL POINT

PLOT DATE: Jan 06, 2009 TIME: 8:51am BY: sharon
 DRAWING: Z:\2007\07-012 Conference Center\Lot 1 REPLAT OF HOTEL COMPLEX PLAT REPLAT.dwg LAYOUT: Sheet 3

CAD FILE: Z:\2007\07-012 CONFERENCE CENTER\DWG\LOT 1 REPLAT OF HOTEL COMPLEX PLAT REPLAT.DWG

DATE: 06-09-08	CHECKED: SB	PROJECT No.
SCALE: 1" = 40'	APPROVED: SB	07-012
DRAWN: SB	DWG No. D07-012P	

Keshavarz & Associates, Inc.
 CONSULTING ENGINEERS - SURVEYORS
 711 North Dixie Highway, Suite 201
 West Palm Beach, Florida 33401
 Tel: (561) 689-8600 Fax: (561) 689-7476 LB 4897