

0353-513

# Palm Beach Park of Commerce, P.I.P.D. - Plat 15

A portion of land located in Section 17, Township 41 South, Range 41 East, and a replat of a portion of Tract A, *Calbut Genpar*, according to the plat thereof, as recorded in Plat Book 45, Pages 70 and 71, Palm Beach County, Florida

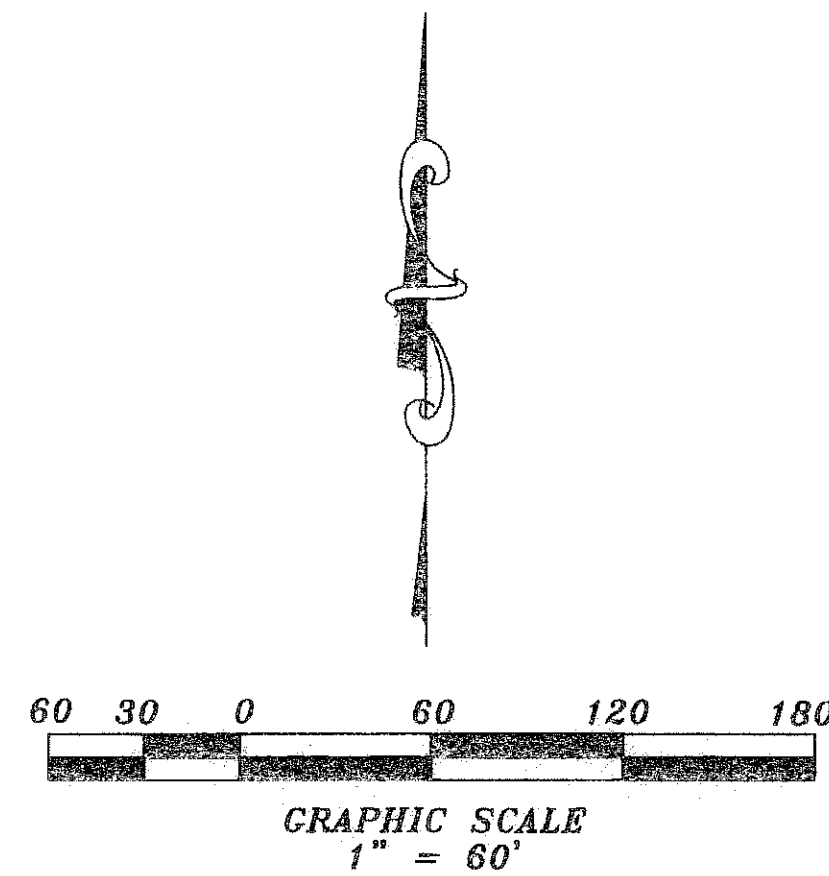
53

State of Florida  
 County of Palm Beach  
 This plat was filed for record at \_\_\_\_\_ M.  
 This day of \_\_\_\_\_  
 A.D. ~~2008~~ and duly recorded in Plat Book \_\_\_\_\_ on Pages \_\_\_\_\_ and \_\_\_\_\_.

Sharon R. Bock  
 Clerk & Comptroller  
 Palm Beach County

By: \_\_\_\_\_  
 Deputy Clerk

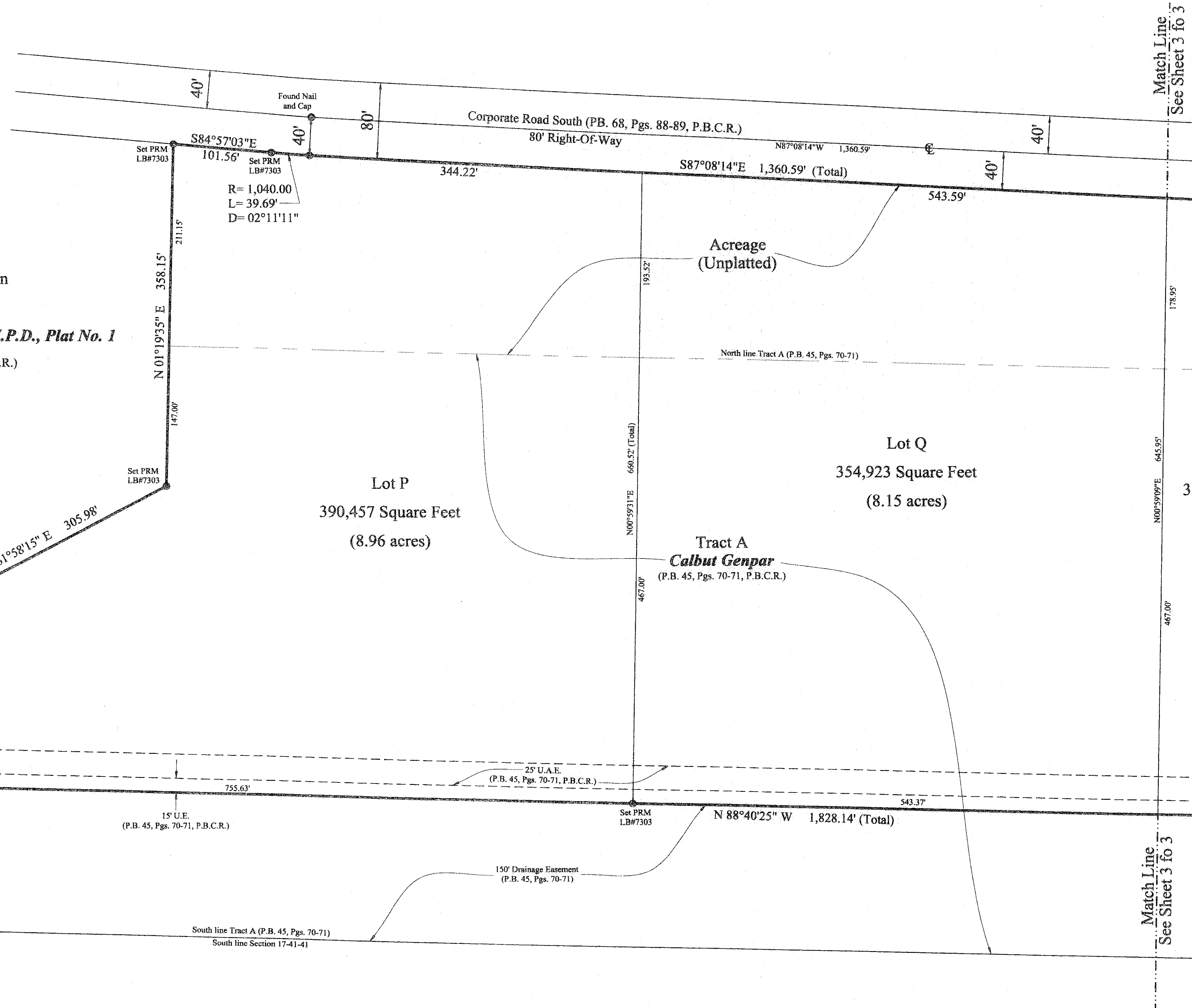
Sheet 2 of 3



Wetlands Preservation  
 Tract 10  
*Palm Beach Park of Commerce, P.I.P.D., Plat No. 1*  
 (P.B. 56, Pgs. 172-176, P.B.C.R.)


Canal 8  
*Palm Beach Park of Commerce, P.I.P.D., Plat No. 1*  
 (P.B. 56, Pgs. 172-176, P.B.C.R.)

P.O.C.  
 Southwest corner Section 17-41-41



**Bearing Reference:**  
 The Bearings shown hereon are referenced to the Centerline of Corporate Road South, as shown on the plat of *Palm Beach Park of Commerce, A P.I.P.D., Plat No. 4*, as recorded in Plat Book 68, Page 88-89, of the Public Records of Palm Beach County, Florida. Said Line bears North 87°08'14" West.

**Legend:**  
 P.O.B. = Point of Beginning  
 P.O.C. = Point of Commencement  
 P.B. = Plat Book  
 Pg. = Page  
 P.B.C.R. = Palm Beach County Records  
 O.R.B. = Official Records Book  
 R/W = Right-Of-Way  
 C = Centerline  
 U.A.E. = Utility Access Easement  
 U.E. = Utility Easement


**Patriot Surveying and Mapping, Inc.**  
 3748 NW 124th Avenue  
 Coral Springs, Florida 33065  
 Phone: (954) 509-0083 Fax: (866) 495-0203  
 LB # 7303