

CYPRESS ISLAND TRACT "Y" REPLAT NO. 2

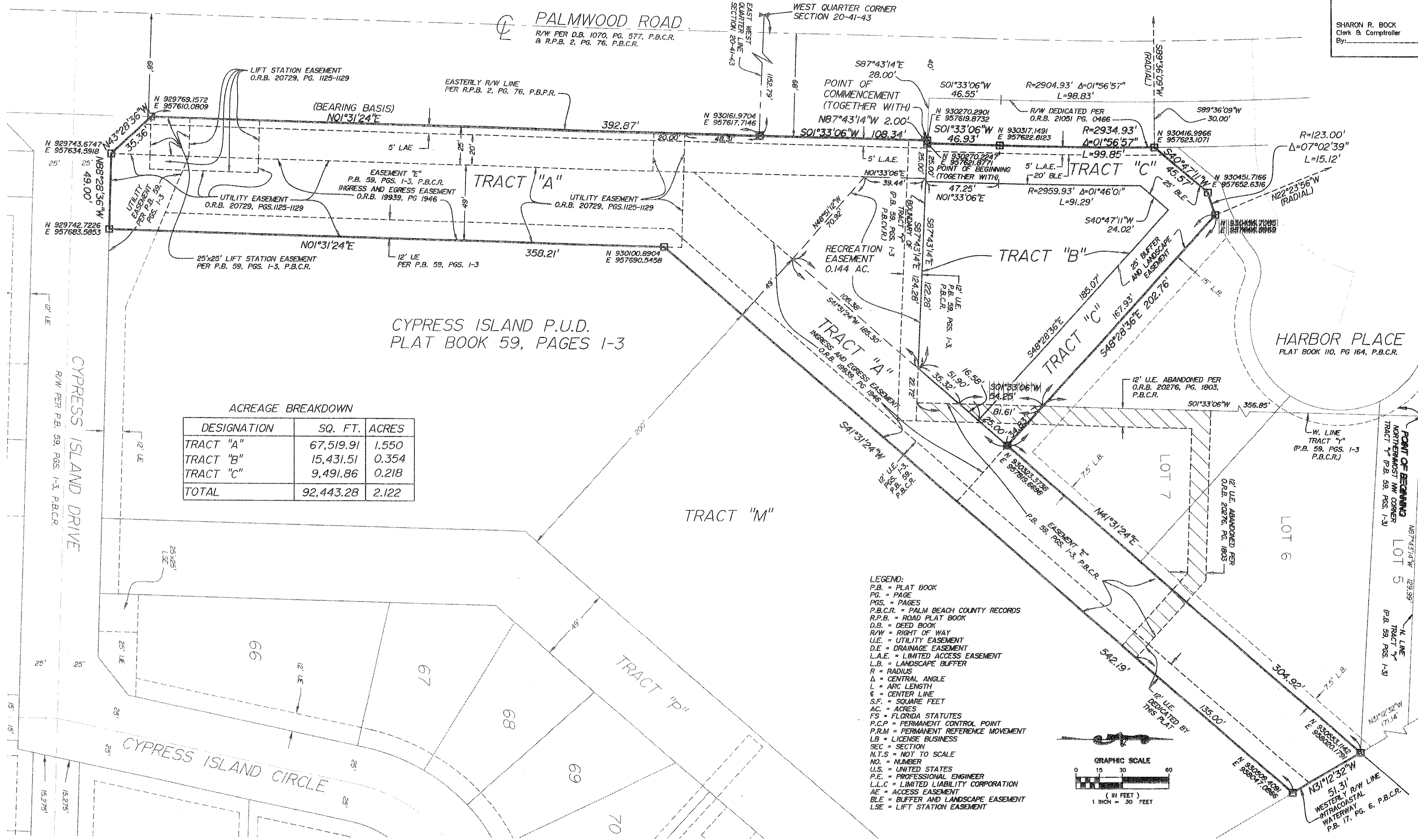
BEING A REPLAT OF CYPRESS ISLAND TRACT "Y" REPLAT
PLAT BOOK 110 PAGES 153 THROUGH 154, LYING IN NORTHWEST ONE-QUARTER (NW 1/4)
AND SOUTHWEST ONE-QUARTER (SW 1/4) OF
SECTION 20, TOWNSHIP 41 SOUTH, RANGE 43 EAST,
PALM BEACH COUNTY, FLORIDA.
JANUARY 2009

SHEET 2 OF 2

68

STATE OF FLORIDA
COUNTY OF PALM BEACH
This plat was filed for record
of this 2009.
day of recorded in Plat Book
and duly recorded in Plat Book
Pages Through

SHARON R. BOCK
Clerk & Comptroller
By:



ACREAGE BREAKDOWN

DESIGNATION	SQ. FT.	ACRES
TRACT "A"	67,519.91	1.550
TRACT "B"	15,431.51	0.354
TRACT "C"	9,491.86	0.218
TOTAL	92,443.28	2.122

LEGEND:
P.B. = PLAT BOOK
PG. = PAGE
PGS. = PAGES
P.B.C.R. = PALM BEACH COUNTY RECORDS
R.P.B. = ROAD PLAT BOOK
D.B. = DEED BOOK
R/W = RIGHT OF WAY
U.E. = UTILITY EASEMENT
D.E. = DRAINAGE EASEMENT
L.A.E. = LIMITED ACCESS EASEMENT
L.B. = LANDSCAPE BUFFER
R = RADIUS
Δ = CENTRAL ANGLE
L = ARC LENGTH
ε = CENTER LINE
S.F. = SQUARE FEET
AC. = ACRES
FS = FLORIDA STATUTES
P.C.P. = PERMANENT CONTROL POINT
P.R.M. = PERMANENT REFERENCE MOVEMENT
L.B. = LICENSE BUSINESS
SEC = SECTION
N.T.S. = NOT TO SCALE
NO. = NUMBER
U.S. = UNITED STATES
P.E. = PROFESSIONAL ENGINEER
L.L.C. = LIMITED LIABILITY CORPORATION
A.E. = ACCESS EASEMENT
B.L.E. = BUFFER AND LANDSCAPE EASEMENT
L.S.E. = LIFT STATION EASEMENT

