

BOYNTON COMMONS MEDICAL OFFICES M.U.P.D.

A PLAT OF A PORTION OF SECTIONS 20 & 21, TOWNSHIP 45 SOUTH, RANGE 42 EAST, AND ALSO BEING A REPLAT OF A PORTION OF TRACTS 81-83, 111 AND 112, BLOCK 49, AS SHOWN ON THE PLAT OF PALM BEACH FARMS COMPANY PLAT NO. 3, AS RECORDED IN PLAT BOOK 2, PAGE 45-54, OF THE PUBLIC RECORDS OF PALM BEACH COUNTY, FLORIDA
PALM BEACH COUNTY, FLORIDA

APRIL 2009
SHEET 2 OF 2

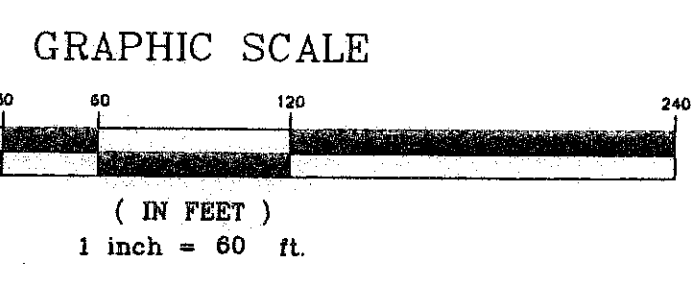
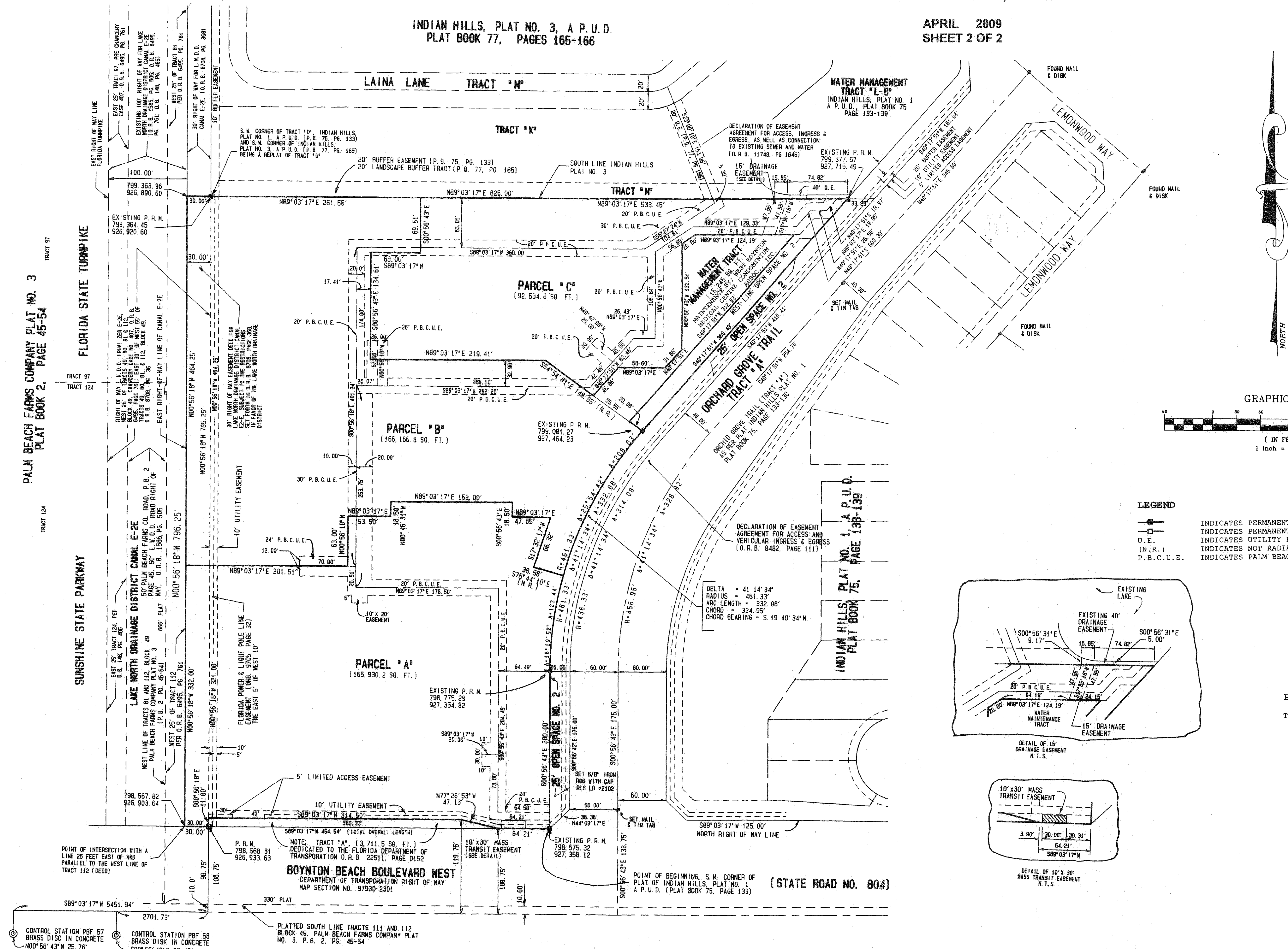
82

COUNTY CLERKS CERTIFICATION

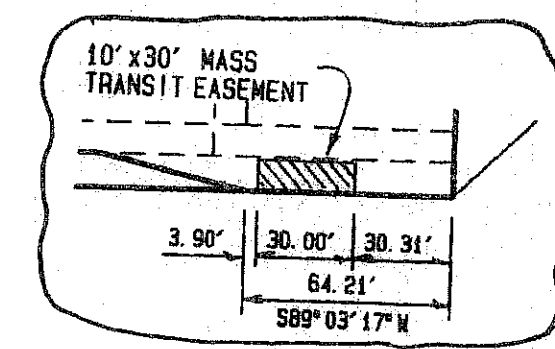
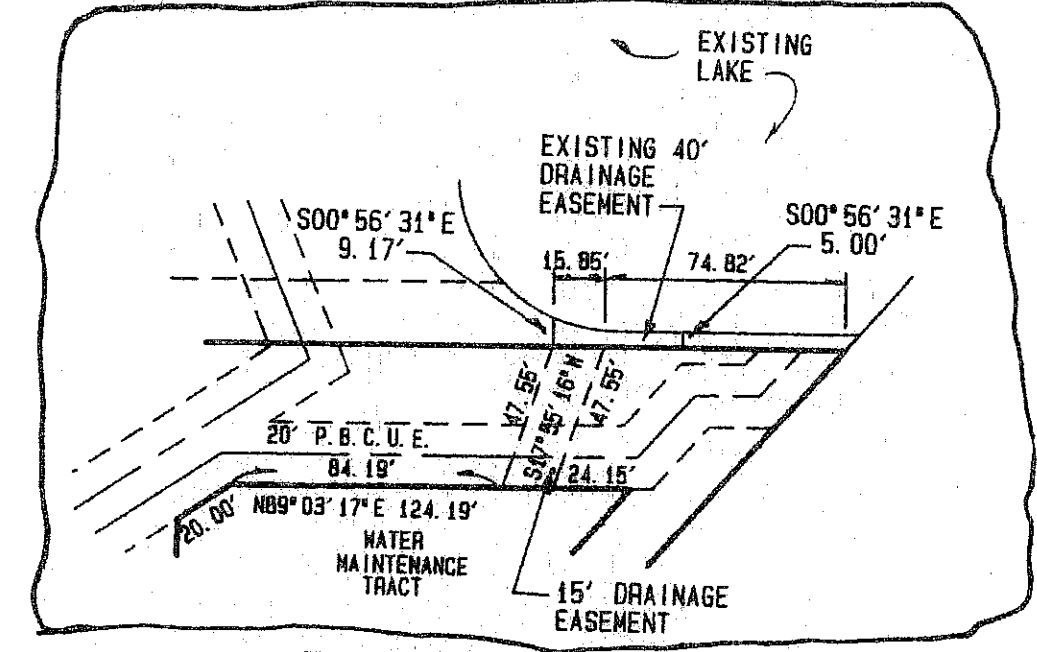
COUNTY OF PALM BEACH
STATE OF FLORIDA

THIS PLAT WAS FILED FOR RECORD AT _____ DAY OF _____ 2009, AND DULY RECORDED IN PLAT BOOK NO. _____ ON PAGE _____

SHARON BOCK
CLERK & COMPTROLLER,



- LEGEND**
- INDICATES PERMANENT REFERENCE MONUMENT, SET (L.B. 2102)
 - INDICATES PERMANENT REFERENCE MONUMENT, FOUND
 - U— INDICATES UTILITY EASEMENT
 - (N.R.) INDICATES NOT RADIAL TO CURVE
 - P.B.C.U.E. INDICATES PALM BEACH COUNTY UTILITY EASEMENT



PREPARING SURVEYOR'S STATEMENT

THIS INSTRUMENT WAS PREPARED BY:
JOSEPH M. TUCKER, RLS NO. 3285
RICHARD L. SHEPHARD & ASSOCIATES INC.
CORPORATION NO. 2102
219 S.E. 23 RD. AVENUE
P O BOX 759
BOYNTON BEACH, FLORIDA 33435
PHONE: (561) 737-6546
FAX: (561) 734-7546

LB 2102 Joe Tucker
LAND SURVEYORS
RICHARD L. SHEPHARD and Associates
Phone: (561) 391-4368
Bock (561) 737-6546
FAX (561) 734-7546
JOSEPH M. TUCKER, P.L.S.
219 S.E. 23rd Ave. - P.O. Box 759
Boynton Beach, FL 33435

Rev 3/22/09