

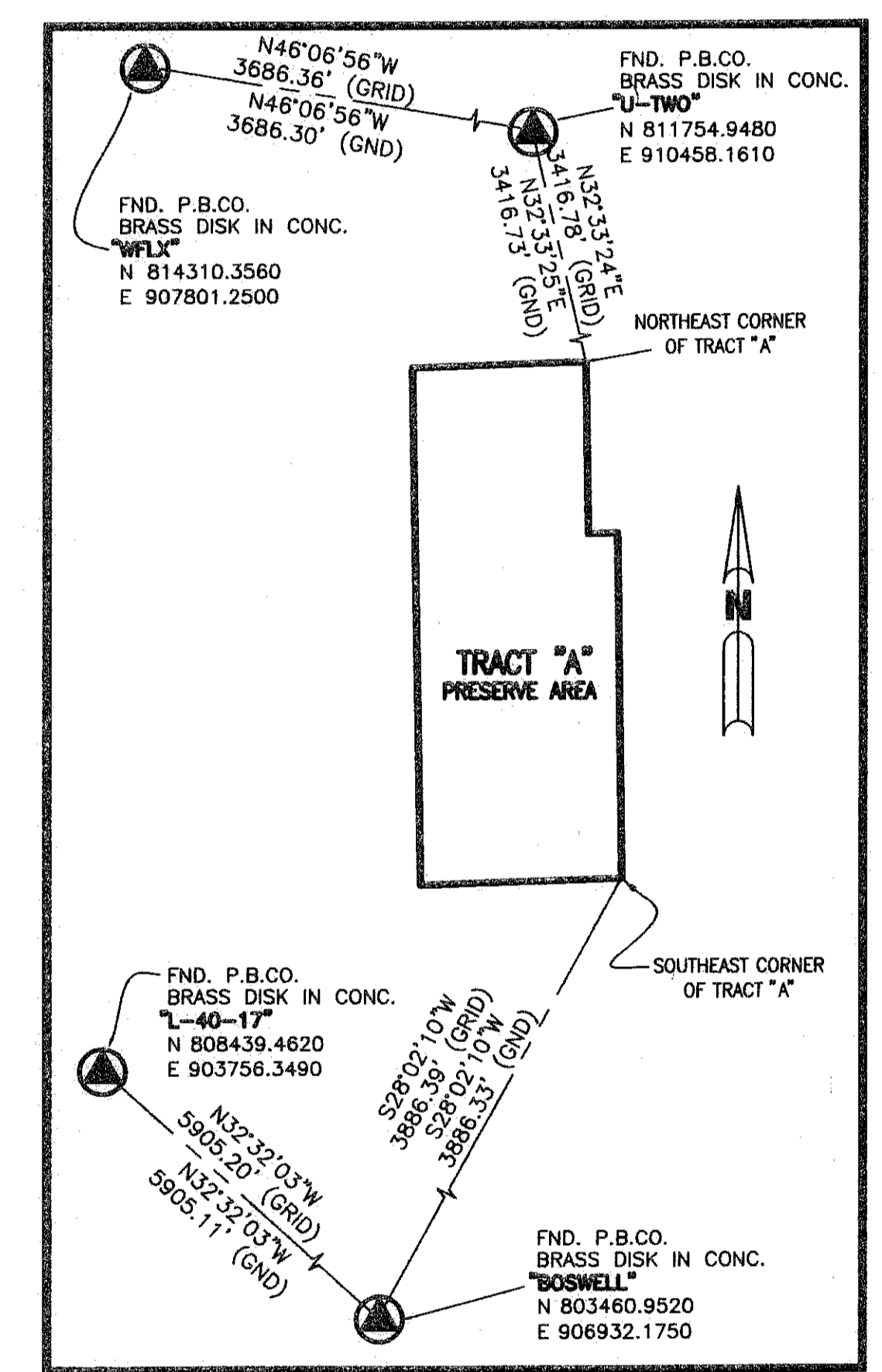
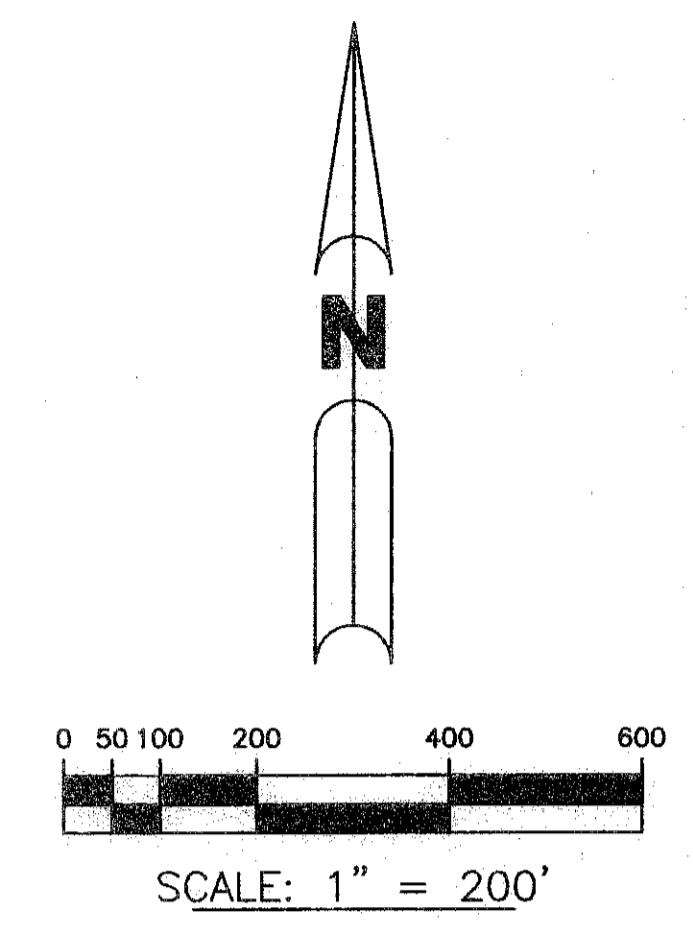
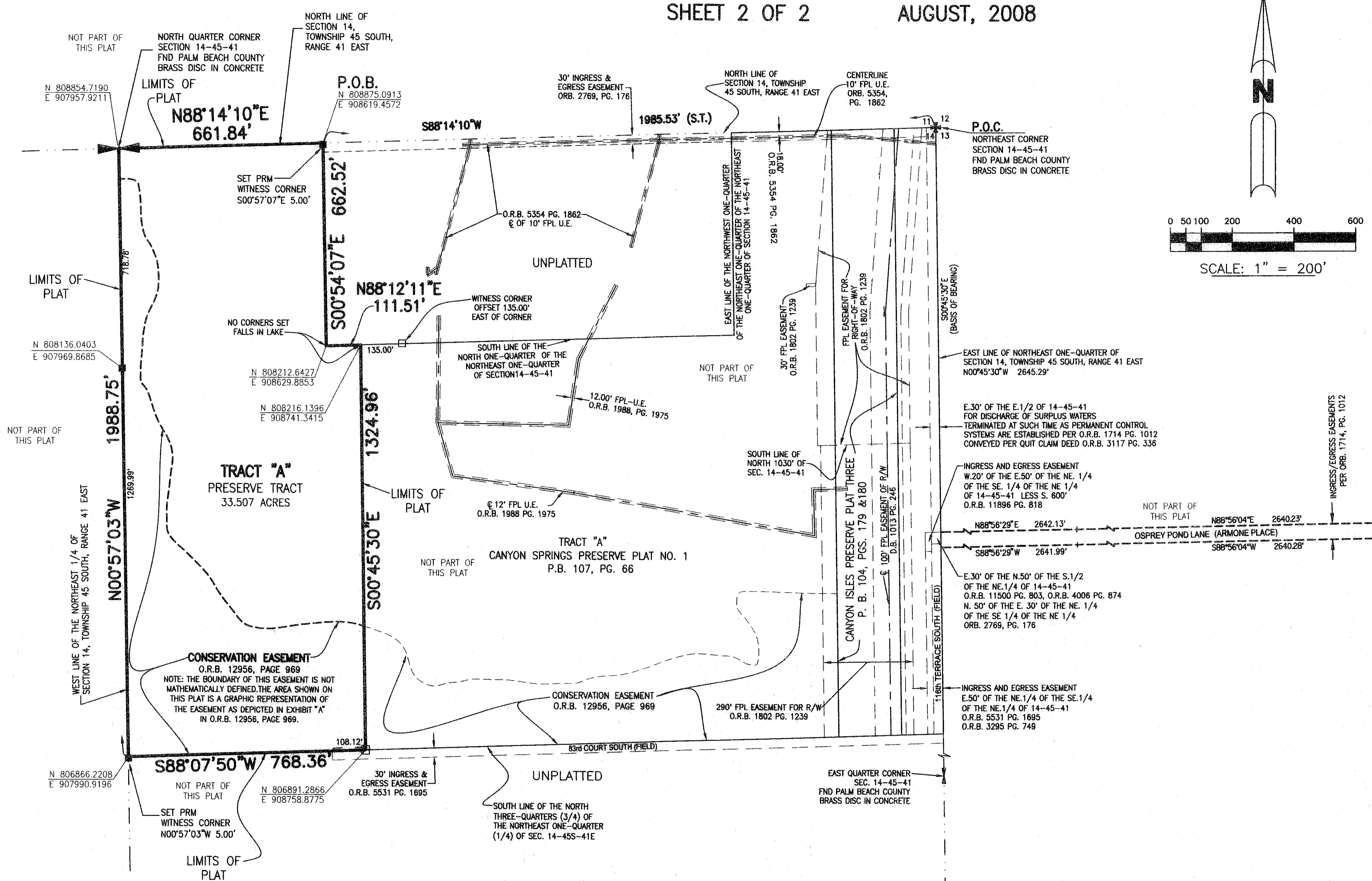
DUBOIS AGR - PRESERVE PLAT FIVE

A PORTION OF THE NORTH THREE-QUARTERS (N 3/4) OF THE NORTHEAST QUARTER (NE 1/4) OF SECTION 14, TOWNSHIP 45 SOUTH, RANGE 41 EAST, PALM BEACH COUNTY, FLORIDA.

SHEET 2 OF 2 AUGUST, 2008

THIS INSTRUMENT PREPARED BY
PERRY C. WHITE, P.S.M. 4213, STATE OF FLORIDA
ARCADIS U.S., INC.
2081 VISTA PARKWAY
WEST PALM BEACH, FLORIDA 33411
EB 7917 / LB 7062

91



DETAIL OF GPS TIES TO STATE PLANE COORDINATE DATUM NOT TO SCALE

LEGEND:

- SET PERMANENT REFERENCE MONUMENT, L.B. #7062
- FOUND PERMANENT REFERENCE MONUMENT, L.B. #6674
- ⊕ CENTERLINE
- D.B. - DEED BOOK
- D.E. - DRAINAGE EASEMENT
- F.P.L. - FLORIDA POWER AND LIGHT
- FND. - FOUND
- GND. - GROUND
- L.B. - LICENSED BUSINESS
- L.W.D.D. - LAKE WORTH DRAINAGE DISTRICT
- MON. - MONUMENT
- N.T.S. - NOT TO SCALE
- O.R.B. - OFFICIAL RECORD BOOK
- (P.) - PLAT
- P.B. - PLAT BOOK
- POS. - PAGES
- P.O.B. - POINT OF BEGINNING
- P.O.C. - POINT OF COMMENCEMENT
- P.S.M. - PROFESSIONAL SURVEYOR AND MAPPER
- R.L.S. - REGISTERED LAND SURVEY
- SEC. - SECTION
- R/W - RIGHT-OF-WAY
- U.E. - UTILITY EASEMENT
- 14-45-41 - SECTION 14, TOWNSHIP 45 SOUTH, RANGE 41 EAST
- N 100000.0000 - DENOTES STATE PLANE COORDINATES
- E 100000.0000

NOTE:

COORDINATES SHOWN ON THE GEODETIC CONTROL MEET OR EXCEED THE LOCAL ACCURACY REQUIREMENTS OF A 2 CENTIMETER GEODETIC CONTROL SURVEY. COORDINATES SHOWN ARE GRID COORDINATES DATUM = NAD 83 (1990 ADJUSTMENT) AS READJUSTED BY PALM BEACH COUNTY IN 1998. ZONE = FLORIDA EAST ZONE. LINEAR UNIT = U.S. SURVEY FEET. COORDINATE SYSTEM = 1983 STATE PLANE TRANSVERSE MERCATOR PROJECTION. ALL DISTANCES ARE GROUND. SCALE FACTOR = 1.0000147. PLAT BEARING = GRID BEARING.

SITE MAP

NOT TO SCALE

