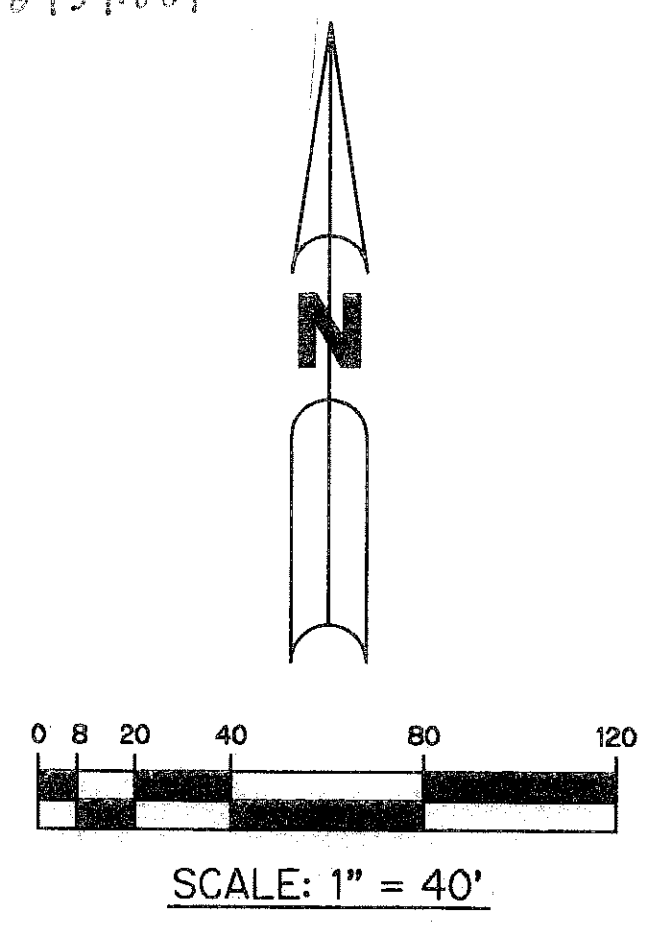


LYONS WEST AGR P.U.D. - PLAT ONE

BEING A REPLAT OF TRACTS 49 THROUGH 54, TRACTS 57 AND 58, TRACTS 63 THROUGH 67, TRACTS 72, 73, 78, 79, 81, 91, 92 AND 96, ALL OF TRACTS 68 THROUGH 71, TRACTS 74 THROUGH 77 AND TRACTS 93 THROUGH 95, AND A PORTION OF A ROAD, DYKE AND DITCH RESERVATION, 30 FEET IN WIDTH, BLOCK 53, PALM BEACH FARMS CO. PLAT NO. 3, PLAT BOOK 2, PAGES 45 THROUGH 54, PUBLIC RECORDS, PALM BEACH COUNTY, FLORIDA.
ALL LYING WITHIN SECTIONS 30 AND 31, TOWNSHIP 45 SOUTH, RANGE 42 EAST, PALM BEACH COUNTY, FLORIDA

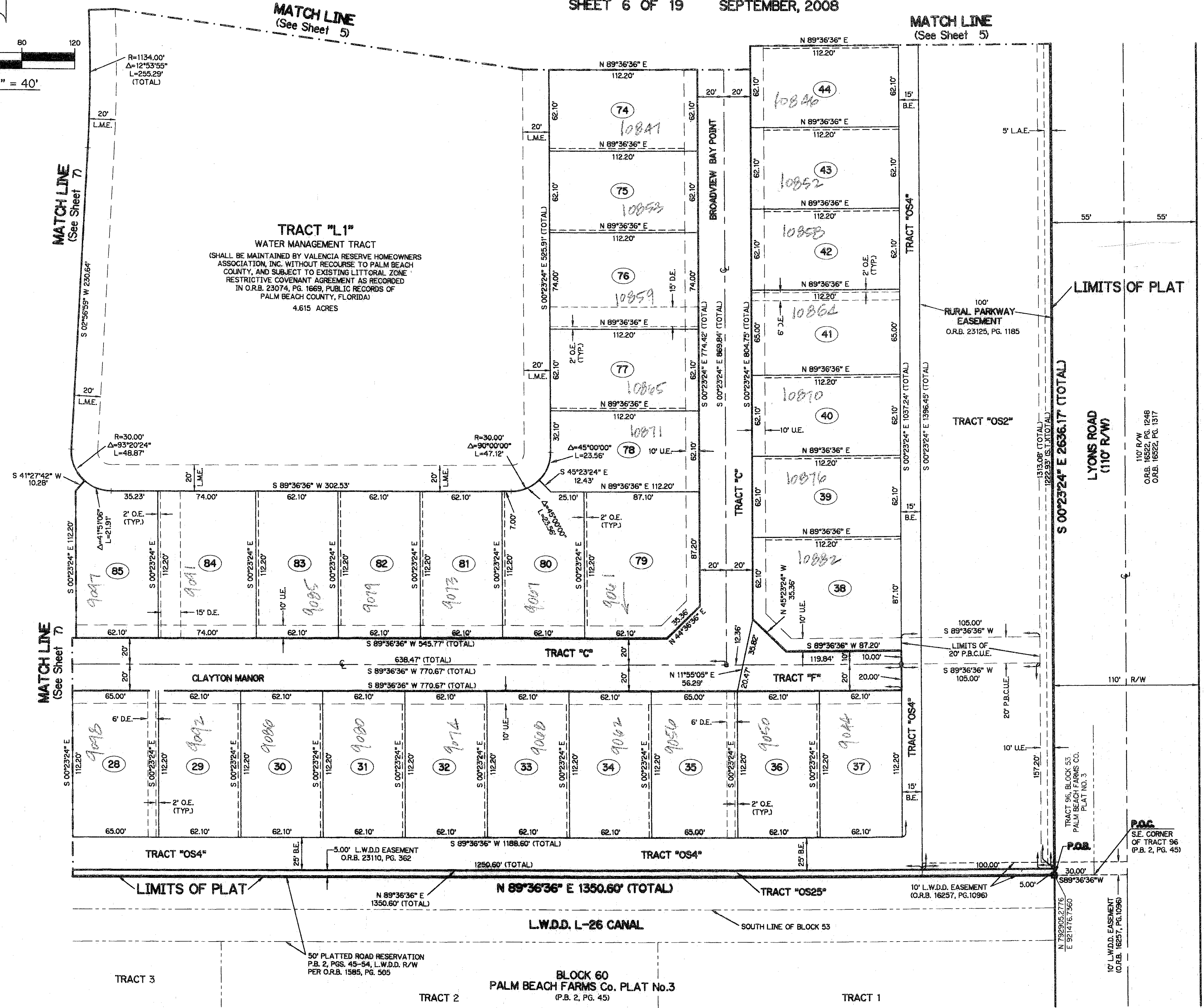
SHEET 6 OF 19 SEPTEMBER, 2008

100



LEGEND:

- - SET PERMANENT REFERENCE MONUMENT, L.B. #7062
 - - FOUND PERMANENT REFERENCE MONUMENT, L.B. #7062
 - - SET PERMANENT CONTROL POINT, L.B. #7062
 - - FOUND PERMANENT CONTROL POINT, L.B. #7062
 - Δ - DELTA ANGLE
 - B.E. - BUFFER EASEMENT
 - CB - CHORD BEARING
 - CH - CHORD DISTANCE
 - CL - CENTERLINE
 - D.B. - DEED BOOK
 - D.E. - DRAINAGE EASEMENT
 - L - ARC LENGTH
 - L.A.E. - LIMITED ACCESS EASEMENT
 - L.M.A.E. - LAKE MAINTENANCE ACCESS EASEMENT
 - L.M.E. - LAKE MAINTENANCE EASEMENT
 - L.W.D.D. - LAKE WORTH DRAINAGE DISTRICT
 - N.R. - NOT RADIAL
 - N.T.S. - NOT TO SCALE
 - O.R.B. - OFFICIAL RECORD BOOK
 - O.E. - OVERHANG EASEMENT
 - P.B.C.U.E. - PALM BEACH COUNTY UTILITY EASEMENT
 - P.B. - PLAT BOOK
 - P.C.P. - PERMANENT CONTROL POINT
 - P.G.S. - PAGES
 - P.O.B. - POINT OF BEGINNING
 - P.O.C. - POINT OF COMMENCEMENT
 - P.S.M. - PROFESSIONAL SURVEYOR AND MAPPER
 - R - RADIUS
 - R/W - RIGHT-OF-WAY
 - R.D. & D. - ROAD, DYKE AND DITCH RESERVATION
 - U.E. - UTILITY EASEMENT
- N 100000.0000 - DENOTES STATE PLANE COORDINATES
E 100000.0000
S.T. - SURVEY TIE



THIS INSTRUMENT PREPARED BY
PERRY C. WHITE, P.S.M. 4213, STATE OF FLORIDA
ARCADIS U.S., INC.
2081 VISTA PARKWAY
WEST PALM BEACH, FLORIDA 33411
LB-7062

NOTE:

COORDINATES SHOWN ON THE GEODETIC CONTROL MEET OR EXCEED THE LOCAL ACCURACY REQUIREMENTS OF A 2 CENTIMETER GEODETIC CONTROL SURVEY. COORDINATES SHOWN ARE GRID COORDINATES DATUM = NAD 83 (1990 ADJUSTMENT) AS ADJUSTED BY PALM BEACH COUNTY IN 1998. ZONE = FLORIDA EAST ZONE. LINEAR UNIT = U.S. SURVEY FEET. COORDINATE SYSTEM = 1983 STATE PLANE TRANSVERSE MERCATOR PROJECTION. ALL DISTANCES ARE GROUND. SCALE FACTOR = 1.0000207. PLAT BEARING = GRID BEARING.

