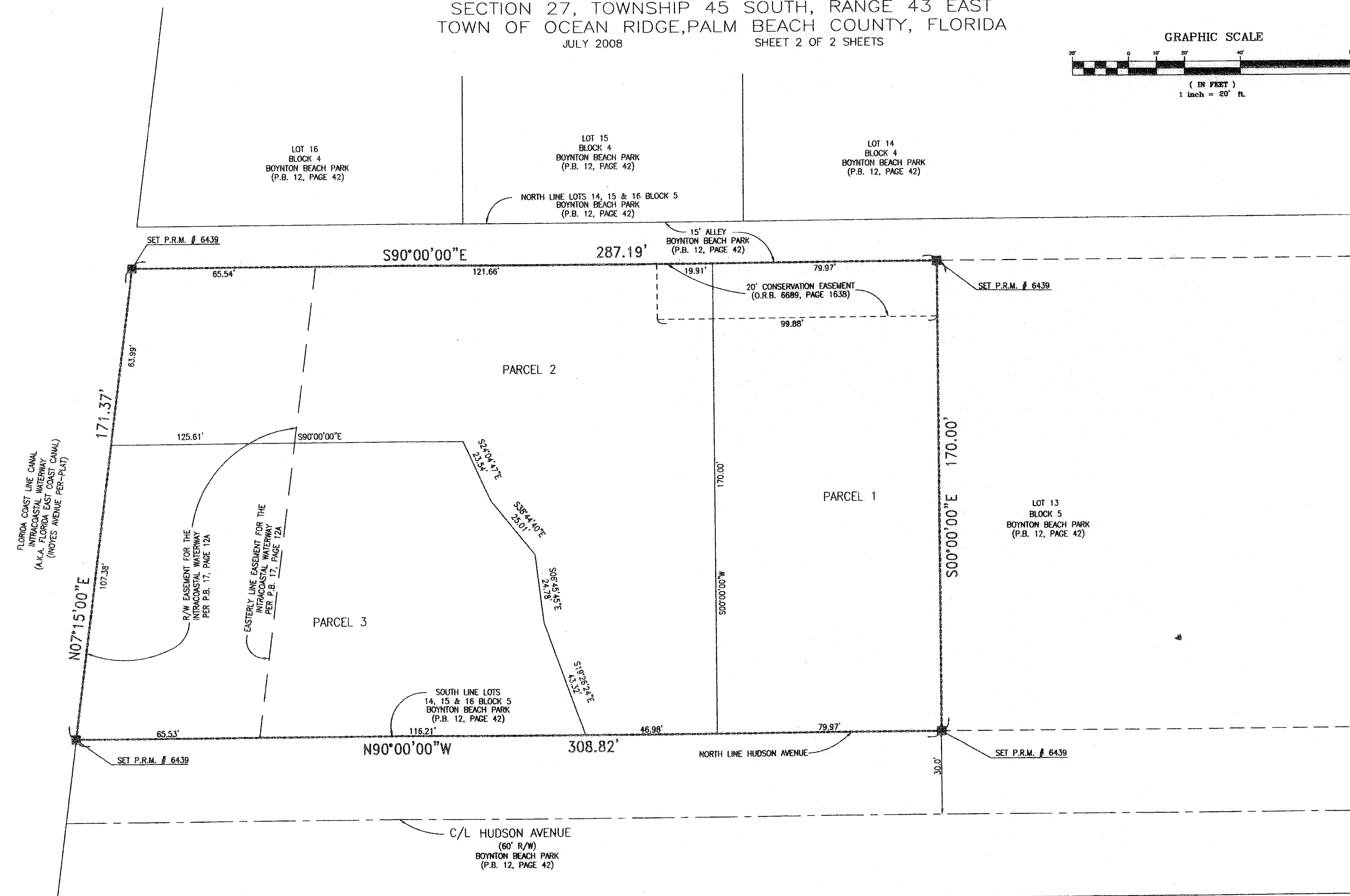
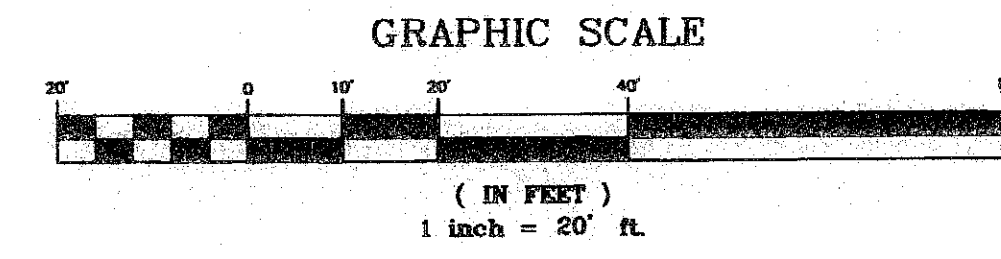


LOTS 14, 15 AND 16, BLOCK 5, BOYNTON PARK REPLAT

BEING A REPLAT OF ALL OF LOTS 14, 15 AND 16, BLOCK 5, BOYNTON BEACH PARK,
 PLAT BOOK 12, PAGE 42, PUBLIC RECORDS OF PALM BEACH COUNTY, FLORIDA,
 SECTION 27, TOWNSHIP 45 SOUTH, RANGE 43 EAST
 TOWN OF OCEAN RIDGE, PALM BEACH COUNTY, FLORIDA
 JULY 2008 SHEET 2 OF 2 SHEETS

123



LEGEND:
 A.K.A. = ALSO KNOW AS
 C/L = CENTERLINE
 O.R.B. = OFFICIAL RECORD BOOK
 P.B. = PLAT BOOK
 P.R.M. = PERMANENT REFERENCE MONUMENT
 R/W = RIGHT OF WAY

THIS INSTRUMENT WAS PREPARED BY ERNEST W. DUNCAN,
 PROFESSIONAL SURVEYOR AND MAPPER, FLORIDA
 CERTIFICATE NO. L.S. 5182
 BASELINE ENGINEERING AND SURVEYING, INC. L.B. 6439
 1400 N.W. 1st COURT
 BOCA RATON, FL. 33432
 (561) 417-0700