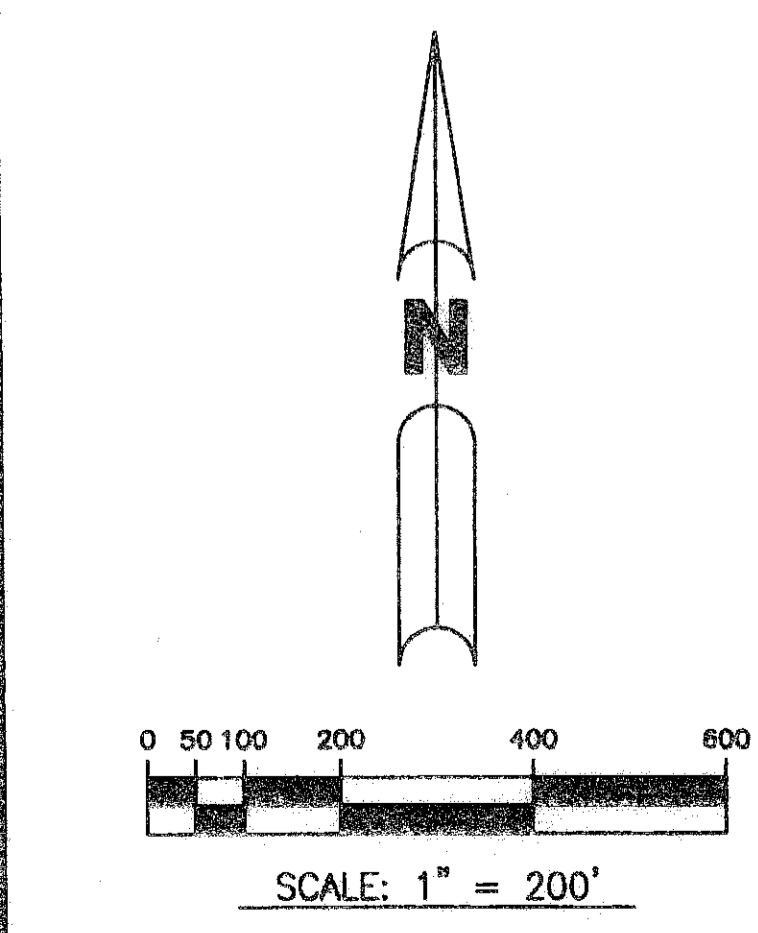
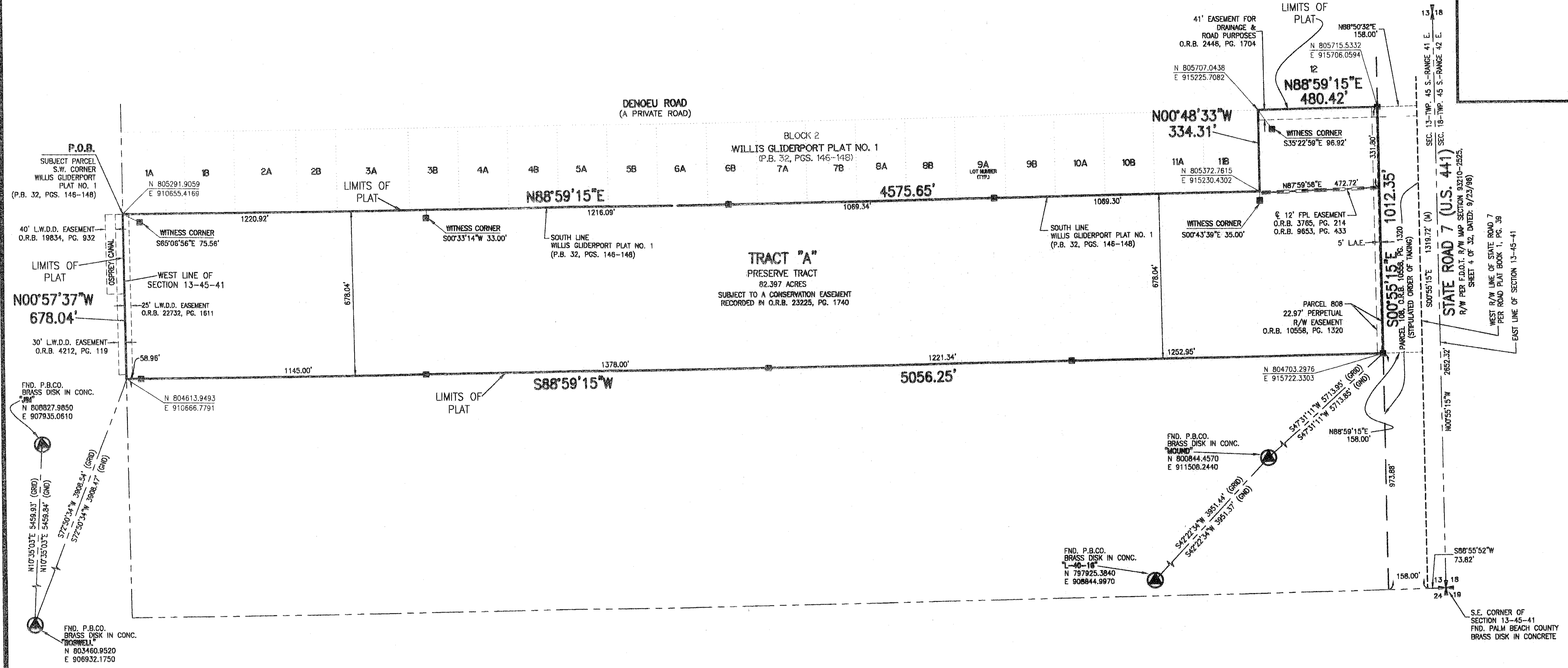


DUBOIS AGR - PRESERVE PLAT ONE

A PORTION OF THE SOUTH ONE-HALF (S. 1/2) OF SECTION 13, TOWNSHIP 45 SOUTH, RANGE 41 EAST,
PALM BEACH COUNTY, FLORIDA.

SHEET 2 OF 2 JANUARY, 2009

133



COORDINATES SHOWN ON THE GEODETIC CONTROL MEET OR EXCEED THE LOCAL ACCURACY REQUIREMENTS OF A 2 CENTIMETER GEODETIC CONTROL SURVEY. COORDINATES SHOWN ARE GRID COORDINATES DATUM = NAD 83 (1990 ADJUSTMENT) AS READJUSTED BY PALM BEACH COUNTY IN 1998. ZONE = FLORIDA EAST ZONE. LINEAR UNIT = U.S. SURVEY FEET. COORDINATE SYSTEM = 1983 STATE PLANE TRANSVERSE MERCATOR PROJECTION. ALL DISTANCES ARE GROUND. SCALE FACTOR = 1.0000170. PLAT BEARING = GRID BEARING.

LEGEND

- - SET PERMANENT REFERENCE MONUMENT, L.B. #7062
- - FOUND PERMANENT REFERENCE MONUMENT, L.B. #7062
- (C.) - DIMENSION PER CALCULATION
- ⊙ - CENTERLINE
- (D.) - DIMENSION PER DESCRIPTION
- D.B. - DEED BOOK
- D.E. - DRAINAGE EASEMENT
- GND. - GROUND
- L.A.E. - LIMITED ACCESS EASEMENT
- L.W.D.D. - LAKE WORTH DRAINAGE DISTRICT
- (M.) - DIMENSION PER FIELD MEASUREMENT
- N.T.S. - NOT TO SCALE
- O.R.B. - OFFICIAL RECORD BOOK
- (P.) - PLAT
- P.B. - PLAT BOOK
- PGS. - PAGES
- P.O.B. - POINT OF BEGINNING
- P.O.C. - POINT OF COMMENCEMENT
- P.S.M. - PROFESSIONAL SURVEYOR AND MAPPER
- R.L.S. - REGISTERED LAND SURVEY
- SEC. - SECTION
- R/W - RIGHT-OF-WAY
- TYP. - TYPICAL
- U.E. - UTILITY EASEMENT
- N 100000.0000
E 100000.0000 - DENOTES STATE PLANE COORDINATES

THIS INSTRUMENT PREPARED BY
 PERRY C. WHITE, P.S.M. 4213, STATE OF FLORIDA
 ARCADIS U.S., INC.
 2081 VISTA PARKWAY
 WEST PALM BEACH, FLORIDA 33411
 EB 7917 / LB 7062