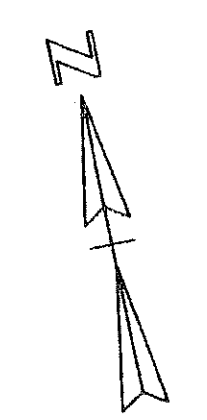
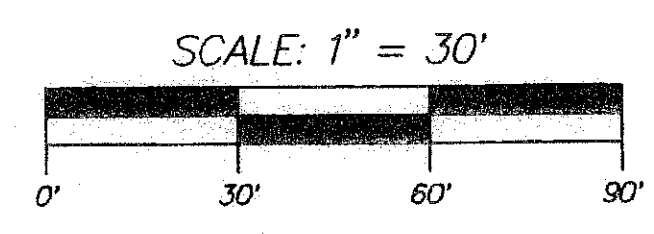


141

COUNTY OF PALM BEACH  
STATE OF FLORIDA  
THIS PLAT WAS FILED FOR RECORD AT \_\_\_\_\_  
THIS \_\_\_\_\_ DAY OF \_\_\_\_\_  
20\_\_\_\_, AND DULY RECORDED IN PLAT BOOK NO. \_\_\_\_\_  
ON PAGE \_\_\_\_\_  
SHARON R. BOCK, CLERK OF CIRCUIT COURT  
AND COMPTROLLER.  
BY \_\_\_\_\_ D.C.

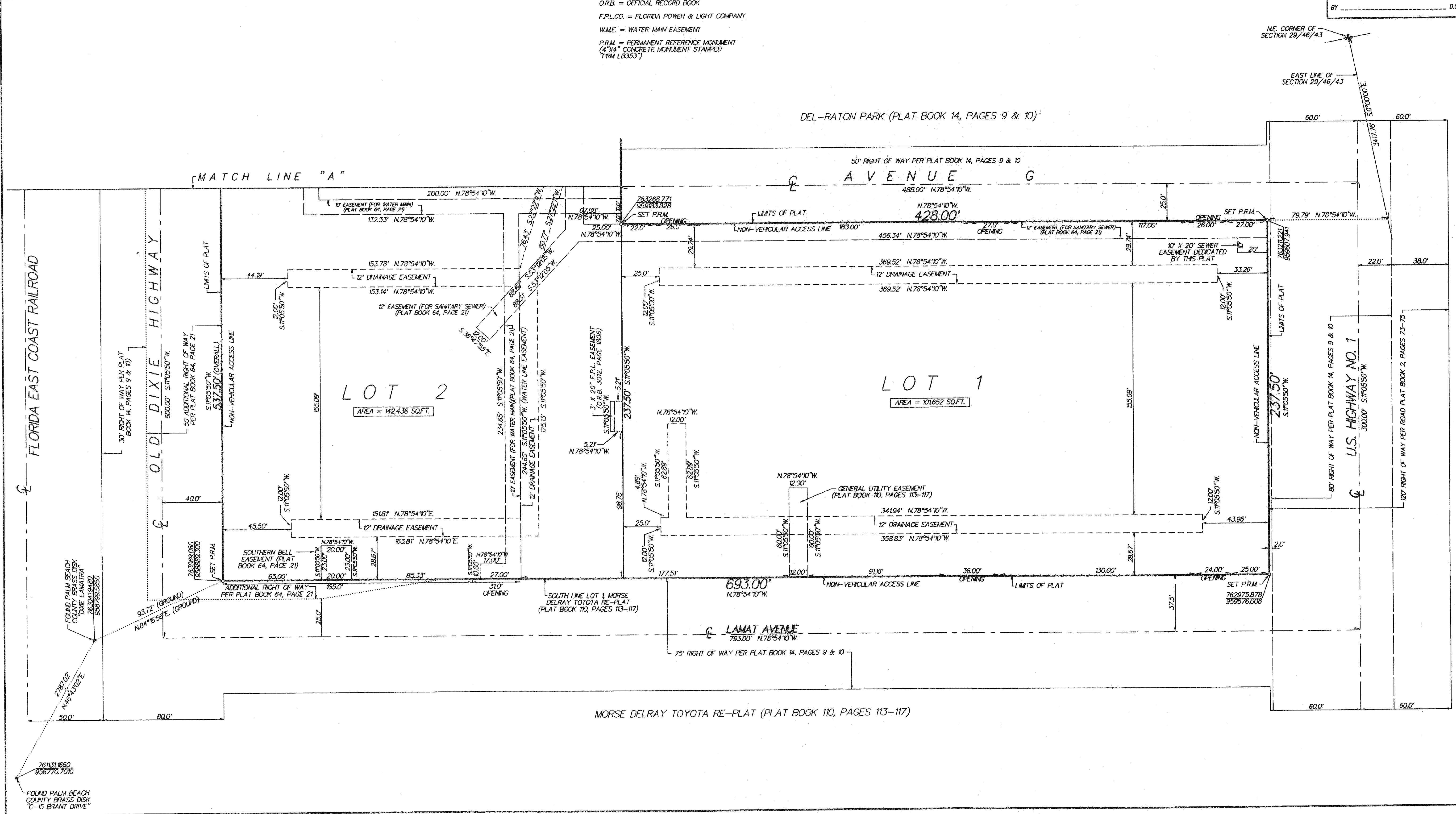
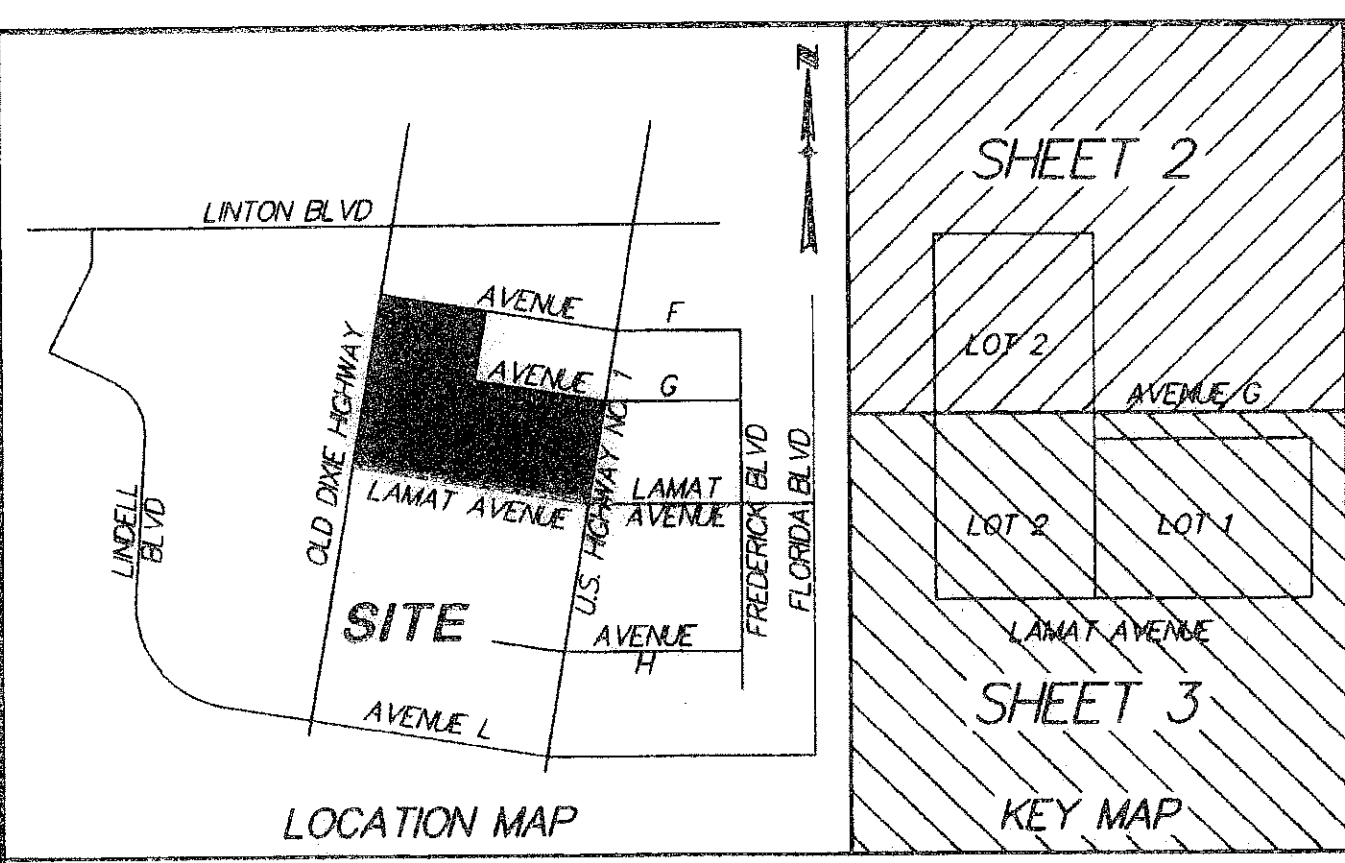


# MORSE-LAMAT PLAT

BEING A REPLAT OF LOT 1 MORSE DELRAY TOYOTA RE-PLAT  
(PLAT BOOK 110, PAGES 113-117), BEING IN SECTION 29,  
TOWNSHIP 46 SOUTH, RANGE 43 EAST, CITY OF DELRAY BEACH,  
PALM BEACH COUNTY, FLORIDA

OCTOBER 2008  
SHEET 3 OF 3

- LEGEND:
- CL = CENTERLINE
  - O.R.B. = OFFICIAL RECORD BOOK
  - F.P.L.CO. = FLORIDA POWER & LIGHT COMPANY
  - W.M.E. = WATER MAIN EASEMENT
  - P.R.M. = PERMANENT REFERENCE MONUMENT  
(4"x4" CONCRETE MONUMENT STAMPED  
FRM L83537)



FOUND PALM BEACH COUNTY BRASS DISK "C-15 ERANT DRIVE"

FOUND PALM BEACH COUNTY BRASS DISK "DIXIE LAMATRA"

MORSE DELRAY TOYOTA RE-PLAT (PLAT BOOK 110, PAGES 113-117)

DEL-RATON PARK (PLAT BOOK 14, PAGES 9 & 10)

U.S. HIGHWAY NO. 1  
300.00' S.17°05'50"W.

10' X 20' SEWER EASEMENT DEDICATED BY THIS PLAT

LOT 1  
AREA = 101,652 SQ.FT.

LOT 2  
AREA = 142,436 SQ.FT.

LAMAT AVENUE  
793.00' N.78°54'10"W.

AVENUE G  
428.00' N.78°54'10"W.

OLD DIXIE HIGHWAY

FLORIDA EAST COAST RAILROAD