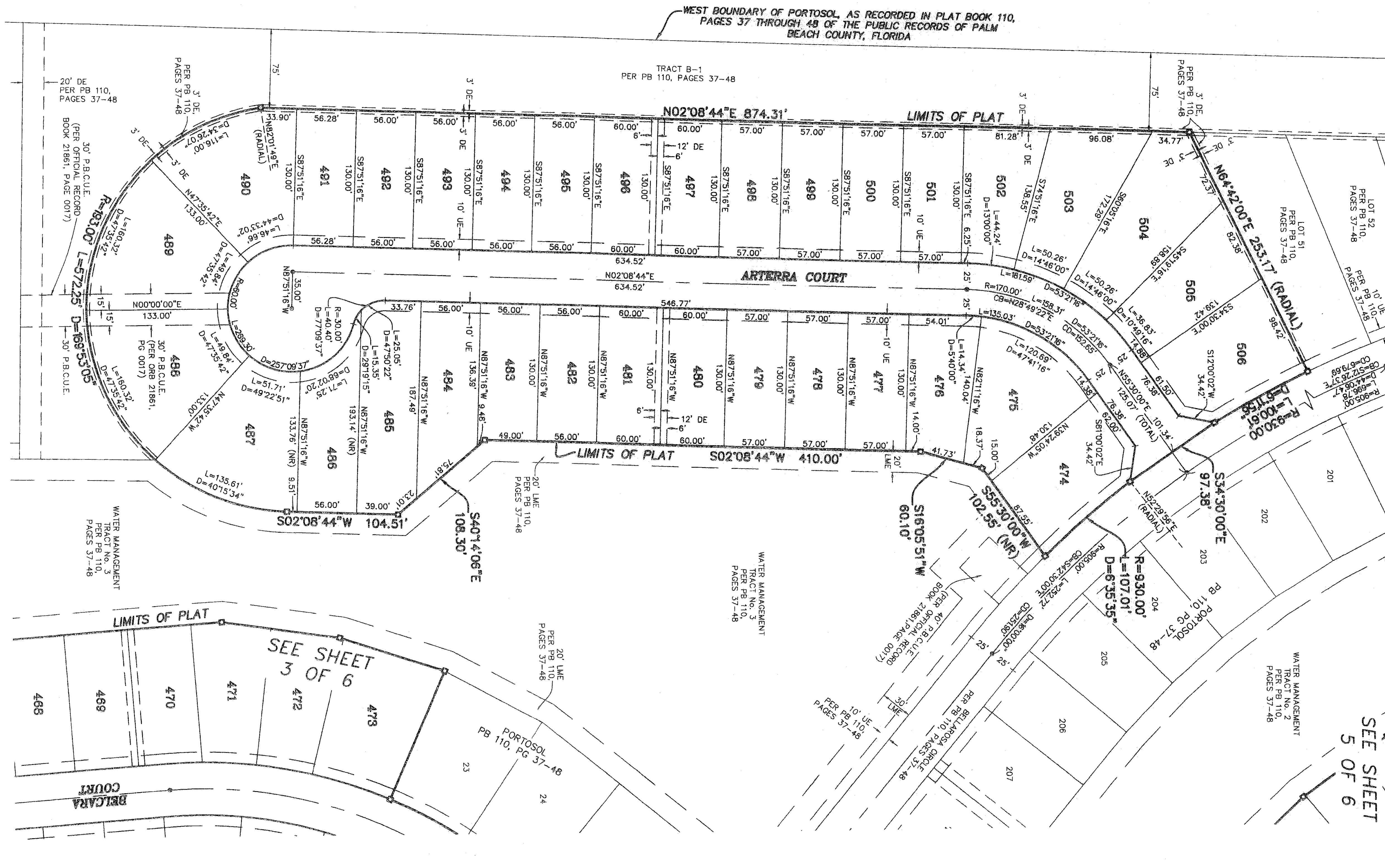
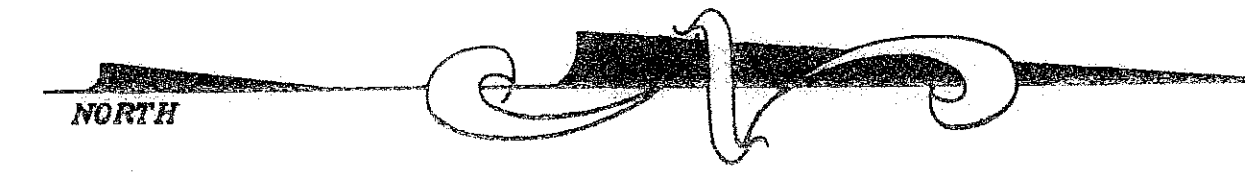
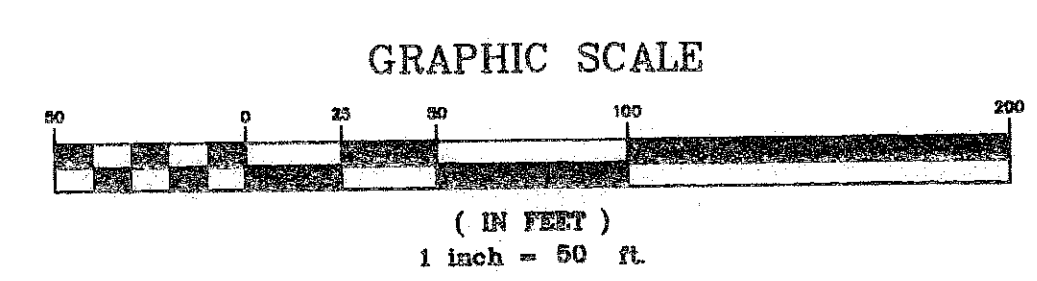
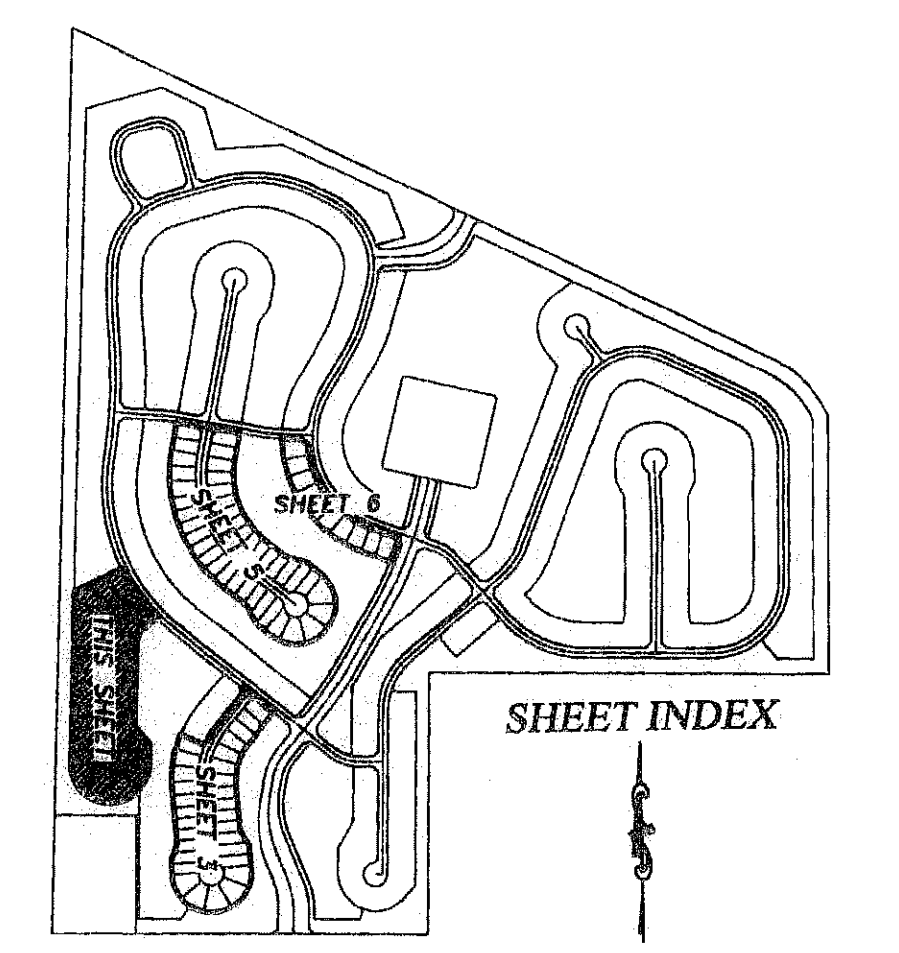


PORTOSOL REPLAT NO. 1
 IN SECTION 24, TOWNSHIP 43 SOUTH, RANGE 41 EAST,
 VILLAGE OF ROYAL PALM BEACH, PALM BEACH COUNTY, FLORIDA
 BEING A REPLAT OF A PORTION OF PORTOSOL, AS RECORDED IN
 PLAT BOOK 110, PAGES 37 THROUGH 48, OF THE PUBLIC RECORDS OF
 PALM BEACH COUNTY, FLORIDA
 JUNE 2009
 SHEET 4 OF 6



- LEGEND:**
- D= DELTA (CENTRAL ANGLE)
 - L= LENGTH
 - R= RADIUS
 - CB= CHORD BEARING
 - CD= CHORD DISTANCE
 - PSM= PROFESSIONAL LAND SURVEYOR AND MAPPER
 - PLS= PROFESSIONAL LAND SURVEYOR
 - LAE= LIMITED ACCESS EASEMENT
 - LME= LAKE MAINTENANCE EASEMENT
 - MREE= MAINTENANCE ROOF AND EAVES EASEMENT
 - UE= UTILITY EASEMENT
 - DE= DRAINAGE EASEMENT
 - OS= OPEN SPACE
 - WMT= WATER MANAGEMENT TRACT
 - (R)= RADIAL
 - (NR)= NON-RADIAL
 - PB= PLAT BOOK
 - ORB= OFFICIAL RECORD BOOK
 - PG= PAGE
 - P.B.C.U.E.= PALM BEACH COUNTY UTILITY EASEMENT
 - = PERMANENT REFERENCE MONUMENT
 - 4"x4" CONCRETE MONUMENT WITH ALUMINUM DISK "PRM LB 4318" (UNLESS OTHERWISE NOTED)
 - = PERMANENT CONTROL POINT
 - PARKER-KALON NAIL & DISK "PCP LB 4318" (UNLESS OTHERWISE NOTED)



PORTOSOL REPLAT NO. 1	
globalmind	SCALE: 1"=50'
2560 RCA BLVD, STE 105, PALM BEACH GARDENS, FL 33410 TEL: 561.627.5200 FAX: 561.627.0983 www.globalmind.com D.B.P.R. BUSINESS LICENSE No. 4318	DATE: JUNE 2009
SHEET NO. 4 OF 6	JOB NO. 1038.057
	FILE: 1038.057 NO 1.DWG