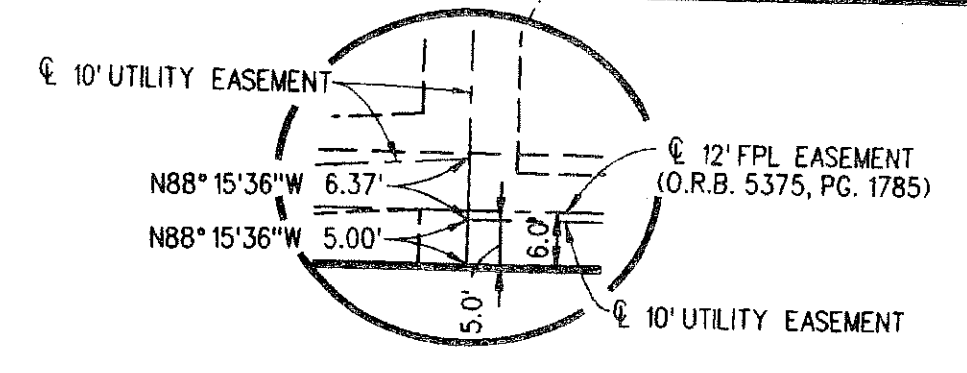
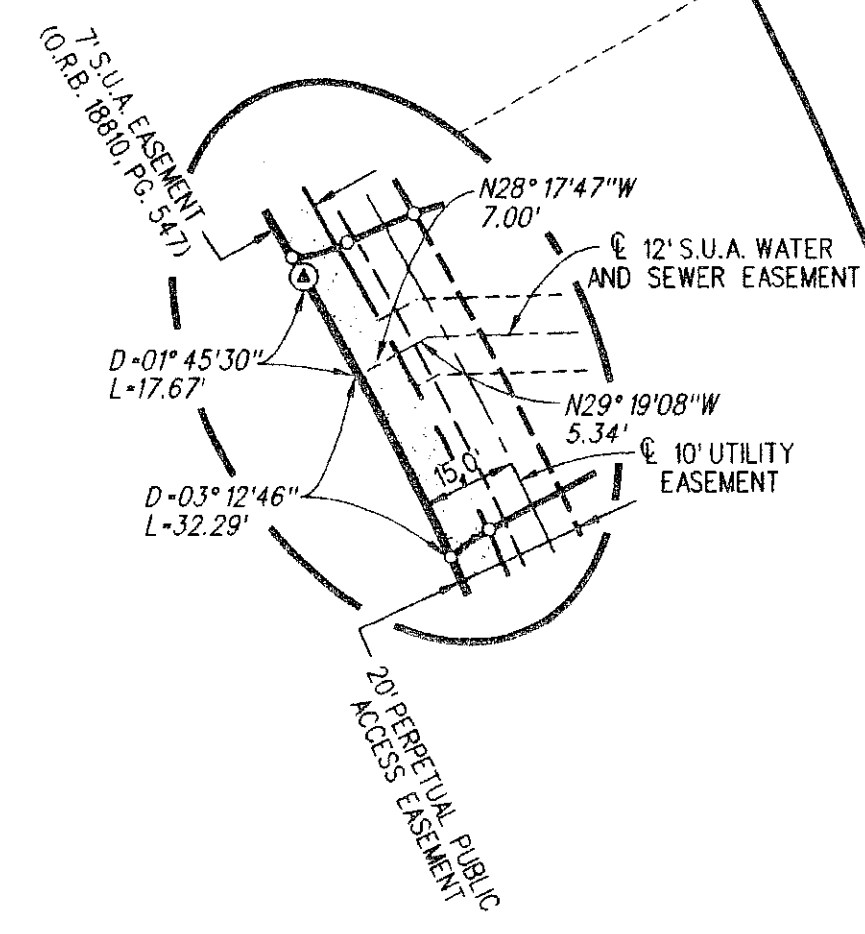
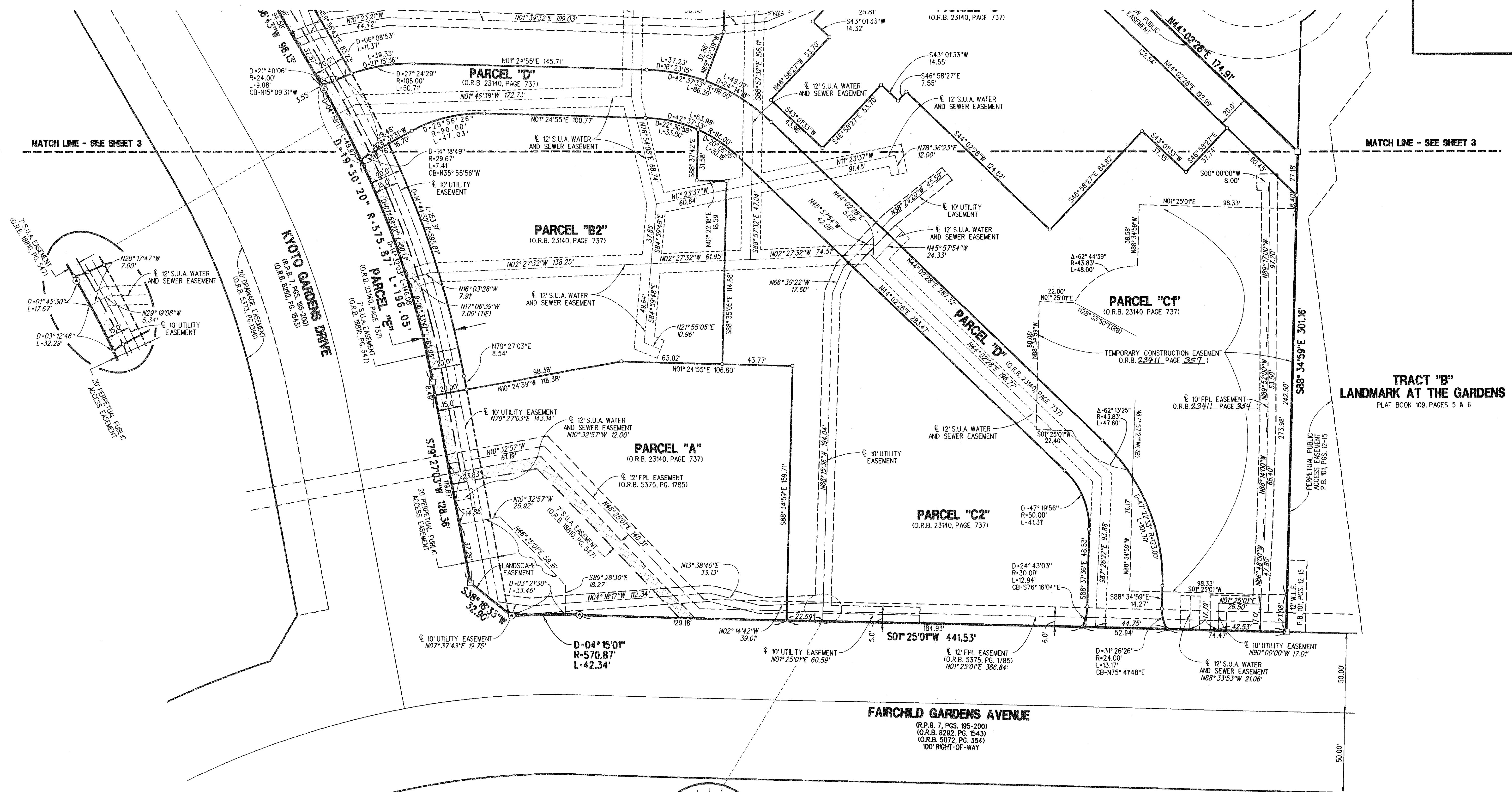
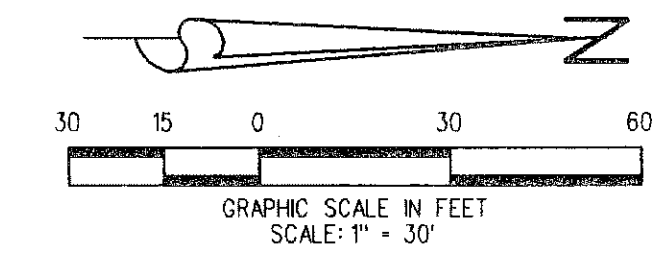


162

# GARDENS POINTE REPLAT

BEING A REPLAT OF GARDENS POINTE, ACCORDING TO THE PLAT THEREOF  
RECORDED IN PLAT BOOK 111, PAGES 12 THROUGH 14, PUBLIC RECORDS OF PALM BEACH COUNTY, FLORIDA,  
SITUATE IN SECTION 6, TOWNSHIP 42 SOUTH, RANGE 43 EAST, CITY OF PALM BEACH GARDENS,  
PALM BEACH COUNTY, FLORIDA  
JULY 2009 SHEET 4 OF 5



SEE SHEET 5 OF 5 FOR DETAIL OF PERIMETER LANDSCAPE BUFFER EASEMENT & PEDESTRIAN ACCESS EASEMENTS NOT SHOWN ON THIS SHEET

**LIDBERG LAND SURVEYING, INC.**  
LB4431 675 West Indiantown Road, Suite 200, Jupiter, Florida 33458 TEL. 561-746-8454

CAD.	K:\JUST \ 064243 \ 111-12 \ 02-227-306-B \ 02-227-306-1B.DGN		
REF.			
FLD.		FB.	PG.
OFF.	R.J.W.		JOB 02-227-306-1B
CKD.	D.C.L.	SHEET 4 OF 5	DATE 06/10/09
			DWG 002-227PPP