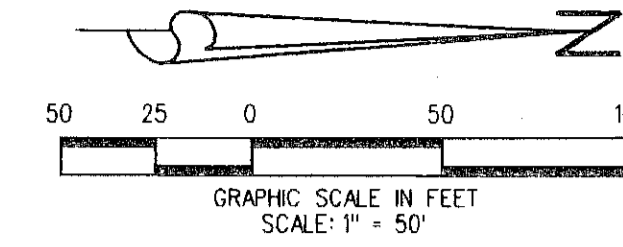
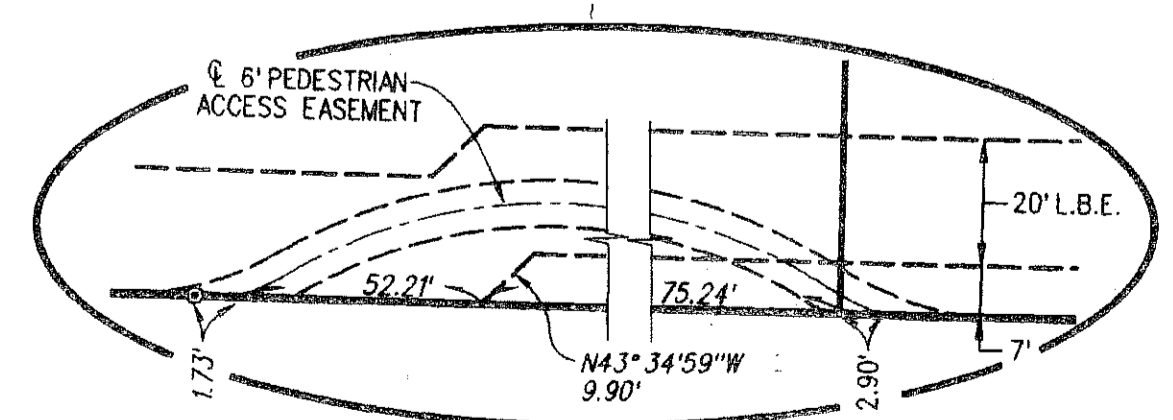
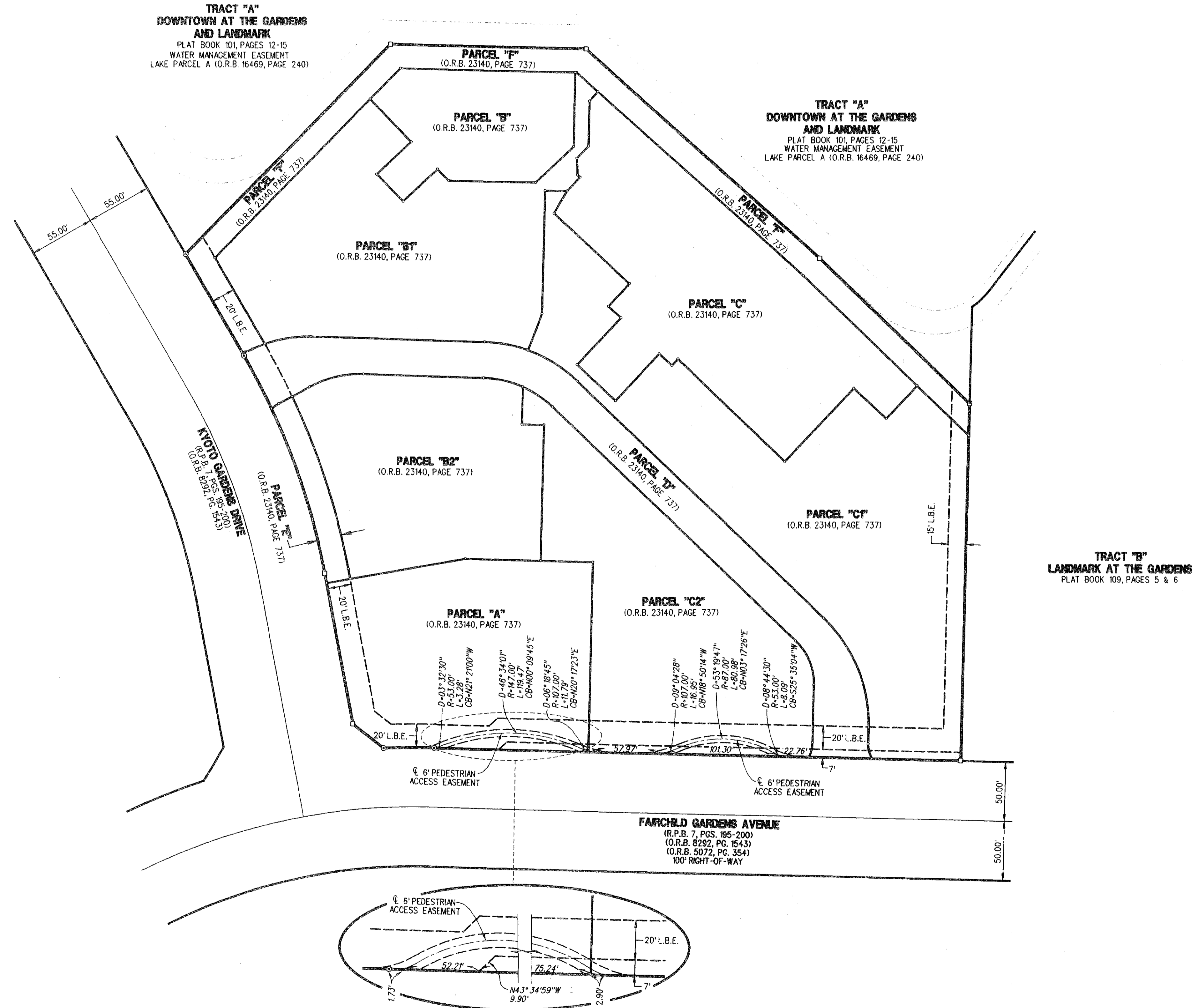


# GARDENS POINTE REPLAT

BEING A REPLAT OF GARDENS POINTE, ACCORDING TO THE PLAT THEREOF  
 RECORDED IN PLAT BOOK 111, PAGES 12 THROUGH 14, PUBLIC RECORDS OF PALM BEACH COUNTY, FLORIDA,  
 SITUATE IN SECTION 6, TOWNSHIP 42 SOUTH, RANGE 43 EAST, CITY OF PALM BEACH GARDENS,  
 PALM BEACH COUNTY, FLORIDA  
 JULY 2009 SHEET 5 OF 5



163



DETAIL SHEET OF PERIMETER  
 LANDSCAPE BUFFER EASEMENT &  
 PEDESTRIAN ACCESS EASEMENTS

**LIDBERG LAND SURVEYING, INC.**  
 675 West Indiantown Road, Suite 200,  
 Jupiter, Florida 33458 TEL. 561-746-8454

CAD: K:\JUST \ 064243 \ 111-12 \ 02-227-306-1B \ 02-227-306-1B.DGN			
REF:			
FLD.	FB.	PG.	JOB 02-227-306-1B
OFF. R.J.W.			DATE 06/10/09
CHKD. D.C.L.	SHEET 5	OF 5	DWG. 002-227PPP