

MINI ASSEMBLAGE P.U.D. PLAT SEVEN

169

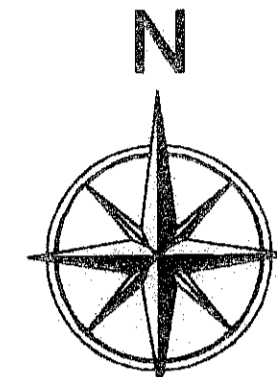
ALSO KNOWN AS GREYSTONE P.U.D.
BEING A REPLAT OF ALL OF TRACTS 54, AND 55 AND A PORTION OF TRACTS 53 AND 56, BLOCK
55, PALM BEACH FARMS COMPANY PLAT NO. 3, RECORDED IN PLAT BOOK 2, PAGES 45
THROUGH 54, PUBLIC RECORDS OF PALM BEACH COUNTY FLORIDA, BEING IN SECTION 28,
TOWNSHIP 45 SOUTH, RANGE 42 EAST PALM BEACH COUNTY, STATE OF FLORIDA

FEBRUARY 2009 SHEET 3 OF 4

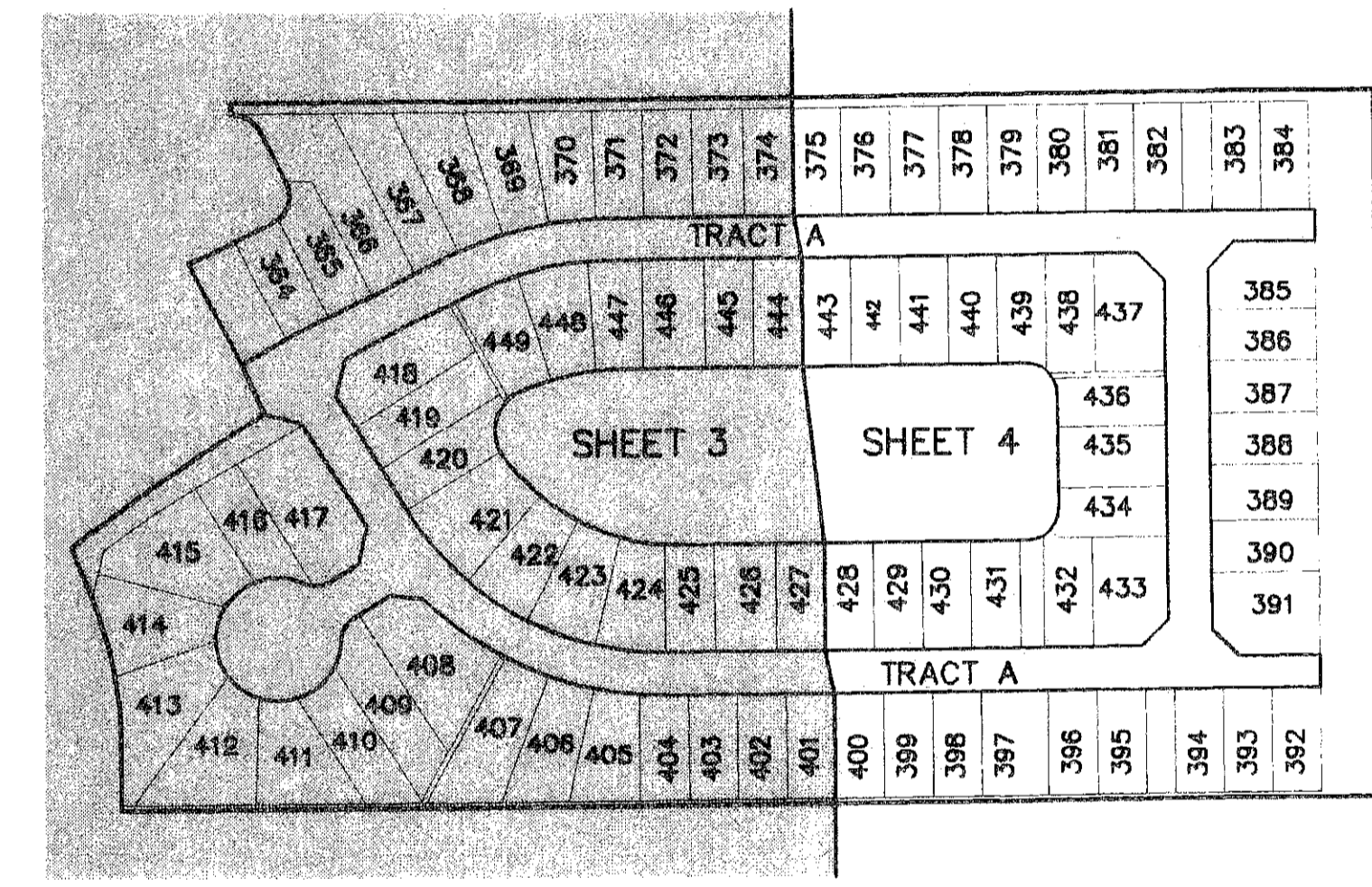
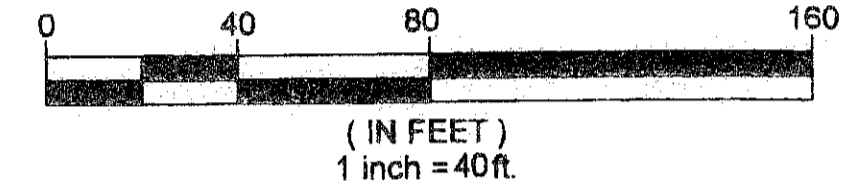
This Instrument Prepared By:
Ronnie L. Furniss, P.S.M.
Certificate of Authorization No. LB 0781
FEBRUARY 2009



Calvin, Giordano & Associates, Inc.
Engineers Surveyors Planners
580 Village Boulevard, Suite 340
West Palm Beach, Florida 33409
Phone: 561.884.6181 Fax 561.884.8360



GRAPHIC SCALE



SHEET INDEX MAP
NOT TO SCALE

LEGEND:

- BE = BUFFER EASEMENT
- CA = CENTRAL ANGLE
- CH = CHORD
- DB = DEED BOOK
- DE = EASEMENT
- ESMT = EASEMENT
- L = ARC LENGTH
- LAE = LIMITED ACCESS EASEMENT
- LBE = LANDSCAPE BUFFER EASEMENT
- LMAE = LAKE MAINTENANCE ACCESS EASEMENT
- LME = LAKE MAINTENANCE EASEMENT
- LSE = LAKE STATION EASEMENT
- LWLD = LAKE WORTH DRAINAGE DISTRICT
- OE = OVERPASS EASEMENT
- ORB = OFFICIAL RECORDS BOOK
- PLB = PLAT BOOK
- PRC = PALM BEACH COUNTY TRAIL EASEMENT
- POB = POINT OF BEGINNING
- POC = POINT OF COMMENCEMENT
- PPM = PERMANENT REFERENCE MONUMENT
- P.U.D. = PLANNED UNIT DEVELOPMENT
- PAGES = PAGES
- R = RADIUS
- R.O.S. = ROAD, DITCH AND DITCH FEEDER RIGHT-OF-WAY
- R.W. = RIGHT-OF-WAY
- UE = UTILITY EASEMENT
- L = CENTERLINE
- PPM = PERMANENT REFERENCE MONUMENT (SET 4" x 4" CONCRETE IN GROUND WITH A 2" ALUMINUM PLATE STAMPED "PPM LB #791")
- = ZERO LOT LINE SYMBOL
- = PERMANENT CONTROL POINT (FOUND, TYPICAL AND OLD LABELLED "LB #791" PER LMP 4/28/07, NOT PLAT BOOK 110, PAGES 1-10)
- = PERMANENT CONTROL POINT (SET "TYPICAL" AND OLD LABELLED "LB #791")

