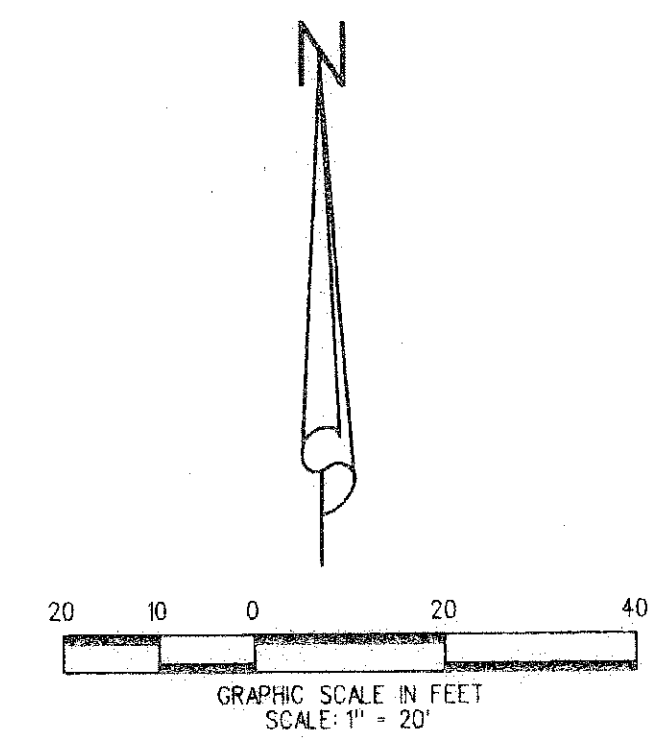
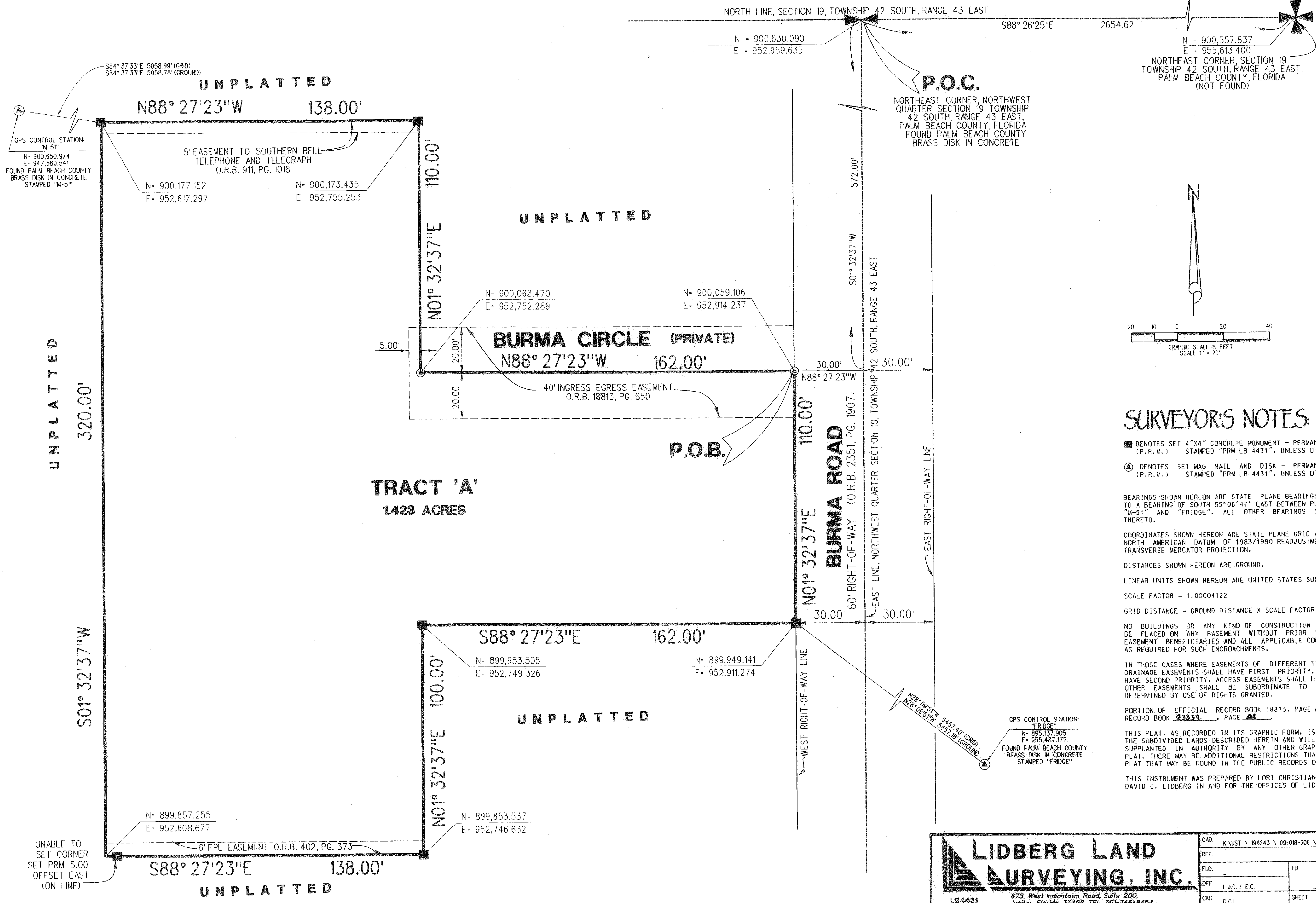


VILLAGE OF HOPE

A PARCEL OF LAND LYING IN THE EAST QUARTER OF THE NORTHEAST QUARTER OF THE NORTHWEST QUARTER OF SECTION 19, TOWNSHIP 42 SOUTH, RANGE 43 EAST, PALM BEACH COUNTY, FLORIDA

JULY 2009 SHEET 2 OF 2

178



SURVEYOR'S NOTES:

■ DENOTES SET 4"X4" CONCRETE MONUMENT - PERMANENT REFERENCE MONUMENT (P.R.M.) STAMPED "PRM LB 4431", UNLESS OTHERWISE NOTED.

Ⓐ DENOTES SET MAG NAIL AND DISK - PERMANENT REFERENCE MONUMENT (P.R.M.) STAMPED "PRM LB 4431", UNLESS OTHERWISE NOTED.

BEARINGS SHOWN HEREON ARE STATE PLANE BEARINGS (GRID) AND ARE REFERENCED TO A BEARING OF SOUTH 55°06'41" EAST BETWEEN PUBLISHED CONTROL STATIONS "M-51" AND "FRIDGE". ALL OTHER BEARINGS SHOWN HEREON ARE RELATIVE THERETO.

COORDINATES SHOWN HEREON ARE STATE PLANE GRID AND ARE RELATIVE TO THE NORTH AMERICAN DATUM OF 1983/1990 READJUSTMENT FOR FLORIDA'S EAST ZONE TRANSVERSE MERCATOR PROJECTION.

DISTANCES SHOWN HEREON ARE GROUND.

LINEAR UNITS SHOWN HEREON ARE UNITED STATES SURVEY FEET.

SCALE FACTOR = 1.00004122

GRID DISTANCE = GROUND DISTANCE X SCALE FACTOR.

NO BUILDINGS OR ANY KIND OF CONSTRUCTION OR TREES OR SHRUBS SHALL BE PLACED ON ANY EASEMENT WITHOUT PRIOR WRITTEN APPROVAL OF ALL EASEMENT BENEFICIARIES AND ALL APPLICABLE COUNTY APPROVALS OR PERMITS AS REQUIRED FOR SUCH ENCROACHMENTS.

IN THOSE CASES WHERE EASEMENTS OF DIFFERENT TYPES CROSS OR COINCIDE, THE DRAINAGE EASEMENTS SHALL HAVE FIRST PRIORITY, UTILITY EASEMENTS SHALL HAVE SECOND PRIORITY, ACCESS EASEMENTS SHALL HAVE THIRD PRIORITY, AND ALL OTHER EASEMENTS SHALL BE SUBORDINATE TO THESE WITH THEIR PRIORITIES DETERMINED BY USE OF RIGHTS GRANTED.

PORTION OF OFFICIAL RECORD BOOK 18813, PAGE 650 ABANDONED IN OFFICIAL RECORD BOOK 23329, PAGE 42

THIS PLAT, AS RECORDED IN ITS GRAPHIC FORM, IS THE OFFICIAL DEPICTION OF THE SUBDIVIDED LANDS DESCRIBED HEREIN AND WILL IN NO CIRCUMSTANCES BE SUPPLANTED IN AUTHORITY BY ANY OTHER GRAPHIC OR DIGITAL FORM OF THE PLAT. THERE MAY BE ADDITIONAL RESTRICTIONS THAT ARE NOT RECORDED ON THIS PLAT THAT MAY BE FOUND IN THE PUBLIC RECORDS OF THIS COUNTY.

THIS INSTRUMENT WAS PREPARED BY LORI CHRISTIANO UNDER THE SUPERVISION OF DAVID C. LIDBERG IN AND FOR THE OFFICES OF LIDBERG LAND SURVEYING INC.

LIDBERG LAND SURVEYING, INC.
 675 West Indiantown Road, Suite 200, Jupiter, Florida 33458 TEL. 561-746-8454

CAD.	K:\JUST \ 184243 \ 09-018-306 \ 09-018-306.DGN		
REF.			
FLD.	FB.	PG.	JOB 09-018-306
OFF.	L.J.C./E.C.		DATE JULY 2009
CKD.	D.C.L.	SHEET 2 OF 2	DWG 009-08P

GPS CONTROL STATION "M-51"
 N= 900,650.974
 E= 947,580.541
 FOUND PALM BEACH COUNTY BRASS DISK IN CONCRETE STAMPED "M-51"

S84° 37'33"E 5058.99' (GRID)
 S84° 37'33"E 5058.78' (GROUND)

UNPLATTED
 N88° 27'23"W 138.00'

N= 900,177.152 E= 952,617.297
 N= 900,173.435 E= 952,755.253

UNPLATTED

BURMA CIRCLE (PRIVATE)
 N88° 27'23"W 162.00'

40' INGRESS EGRESS EASEMENT
 O.R.B. 18813, PG. 650

TRACT 'A'
 1.423 ACRES

S88° 27'23"E 162.00'

N= 899,953.505 E= 952,749.326
 N= 899,949.141 E= 952,911.274

UNPLATTED

N= 899,857.255 E= 952,608.677

S88° 27'23"E 138.00'

UNABLE TO SET CORNER SET PRM 5.00' OFFSET EAST (ON LINE)

UNPLATTED

P.O.C.
 NORTHEAST CORNER, NORTHWEST QUARTER SECTION 19, TOWNSHIP 42 SOUTH, RANGE 43 EAST, PALM BEACH COUNTY, FLORIDA FOUND PALM BEACH COUNTY BRASS DISK IN CONCRETE

N= 900,557.837 E= 955,613.400
 NORTHEAST CORNER, SECTION 19, TOWNSHIP 42 SOUTH, RANGE 43 EAST, PALM BEACH COUNTY, FLORIDA (NOT FOUND)

NORTH LINE, SECTION 19, TOWNSHIP 42 SOUTH, RANGE 43 EAST
 S88° 26'25"E 2654.62'

N= 900,630.090 E= 952,959.635

BURMA ROAD
 60' RIGHT-OF-WAY (O.R.B. 2351, PG. 1907)

EAST RIGHT-OF-WAY LINE

WEST RIGHT-OF-WAY LINE

GPS CONTROL STATION "FRIDGE"
 N= 895,137.905 E= 955,487.172
 FOUND PALM BEACH COUNTY BRASS DISK IN CONCRETE STAMPED "FRIDGE"

N28° 06'51"W 5457.40' (GRID)
 N28° 06'37"W 5457.15' (GROUND)