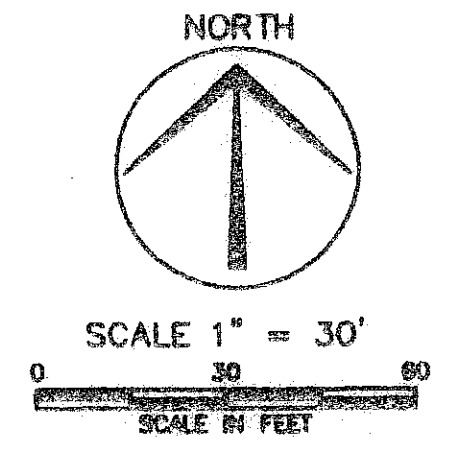


IMAGINE CHARTER SCHOOL AT BOYNTON BEACH

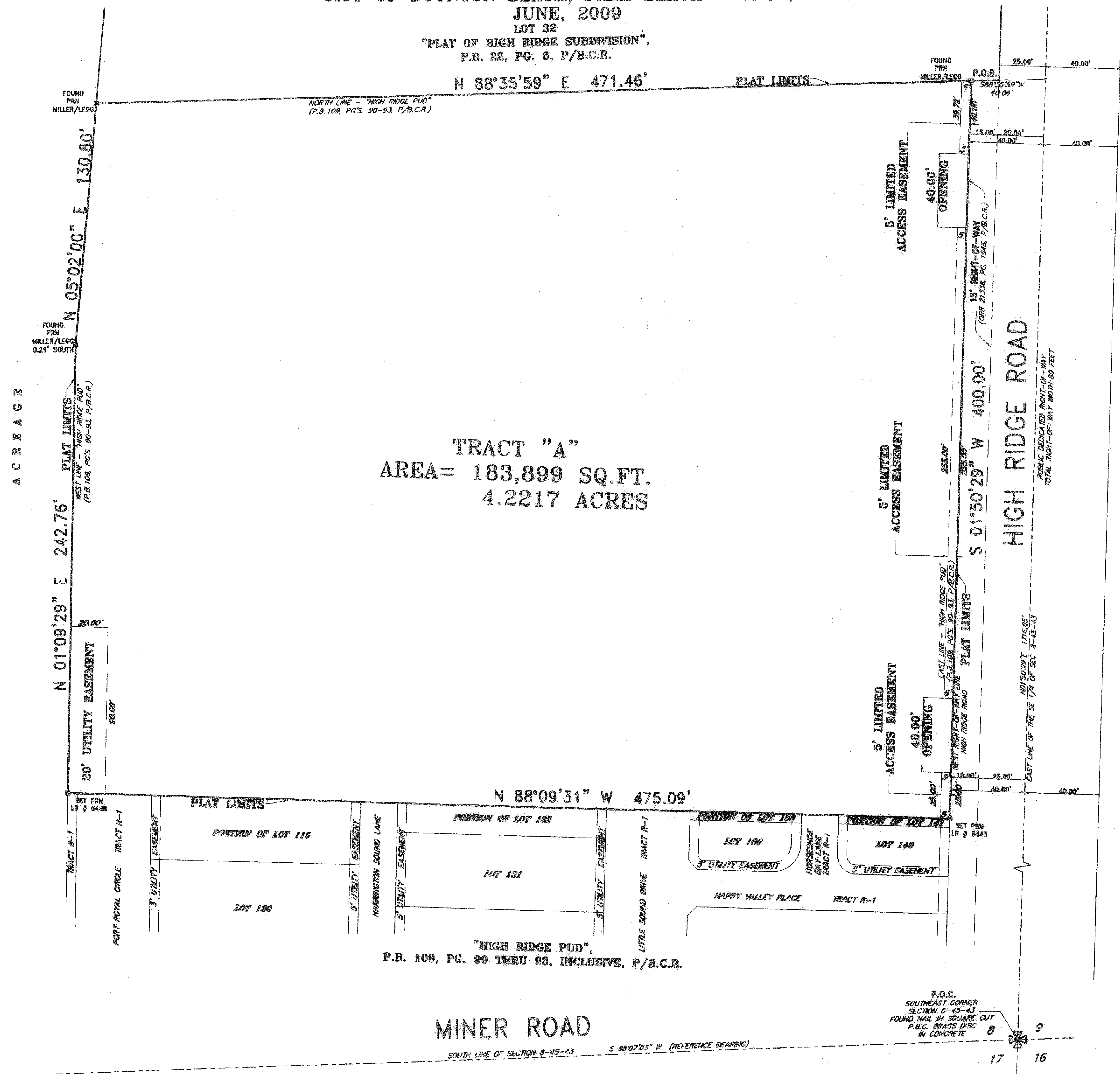
COUSINS SURVEYORS & ASSOCIATES, INC.
 3921 S.W. 47TH AVENUE, SUITE 1011
 DAVIE, FLORIDA 33314
 CERTIFICATE OF AUTHORIZATION: LB # 6448
 PHONE (954)680-9885 FAX (954)680-0213

A REPLAT OF A PORTION OF LOTS 119, 132, 141 AND 158, AND ALL OF LOT 133, LOTS 113 THROUGH 118, INCLUSIVE, LOTS 141 THROUGH 157, INCLUSIVE, LOTS 160 THROUGH 174, INCLUSIVE, AND A PORTION OF TRACT B-1 AND A PORTION OF TRACT R-1, ALL IN "HIGH RIDGE PUD", PLAT BOOK 109, PAGES 90, 91, 92 AND 93, PALM BEACH COUNTY RECORDS.
 SECTION 8, TOWNSHIP 45 SOUTH, RANGE 43 EAST,
 CITY OF BOYNTON BEACH, PALM BEACH COUNTY, FLORIDA.

JUNE, 2009
 LOT 32
 "PLAT OF HIGH RIDGE SUBDIVISION",
 P.B. 22, PG. 6, P/B.C.R.



SHEET 2 OF 2



TRACT "A"
 AREA = 183,899 SQ. FT.
 4.2217 ACRES

- LEGEND:
- DWN DRAWN BY
 - FB/PG FIELD BOOK AND PAGE
 - P.B. PLAT BOOK
 - P/B.C.R. PALM BEACH COUNTY RECORDS
 - P.O.B. POINT OF BEGINNING
 - P.O.C. POINT OF COMMENCEMENT
 - PRM PERMANENT REFERENCE MONUMENT
 - PERMANENT REFERENCE MONUMENT
 - SQ.FT. SQUARE FEET
 - ORB OFFICIAL RECORDS BOOK
 - F.S. FLORIDA STATUTES
 - L.A.E. LIMITED ACCESS EASEMENT

ACREAGE