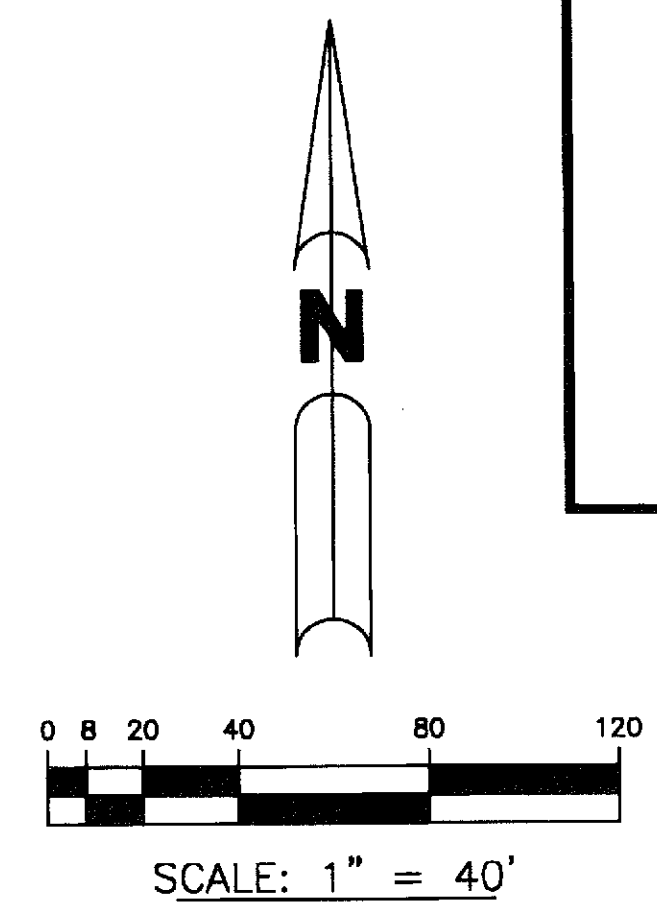
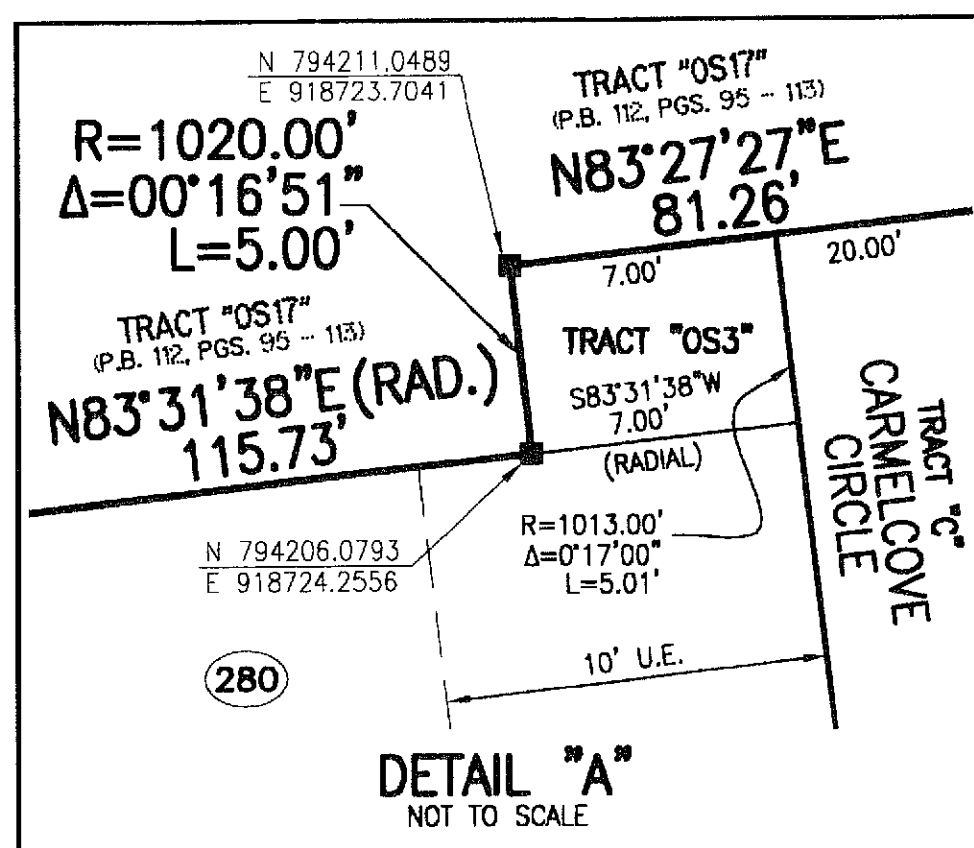


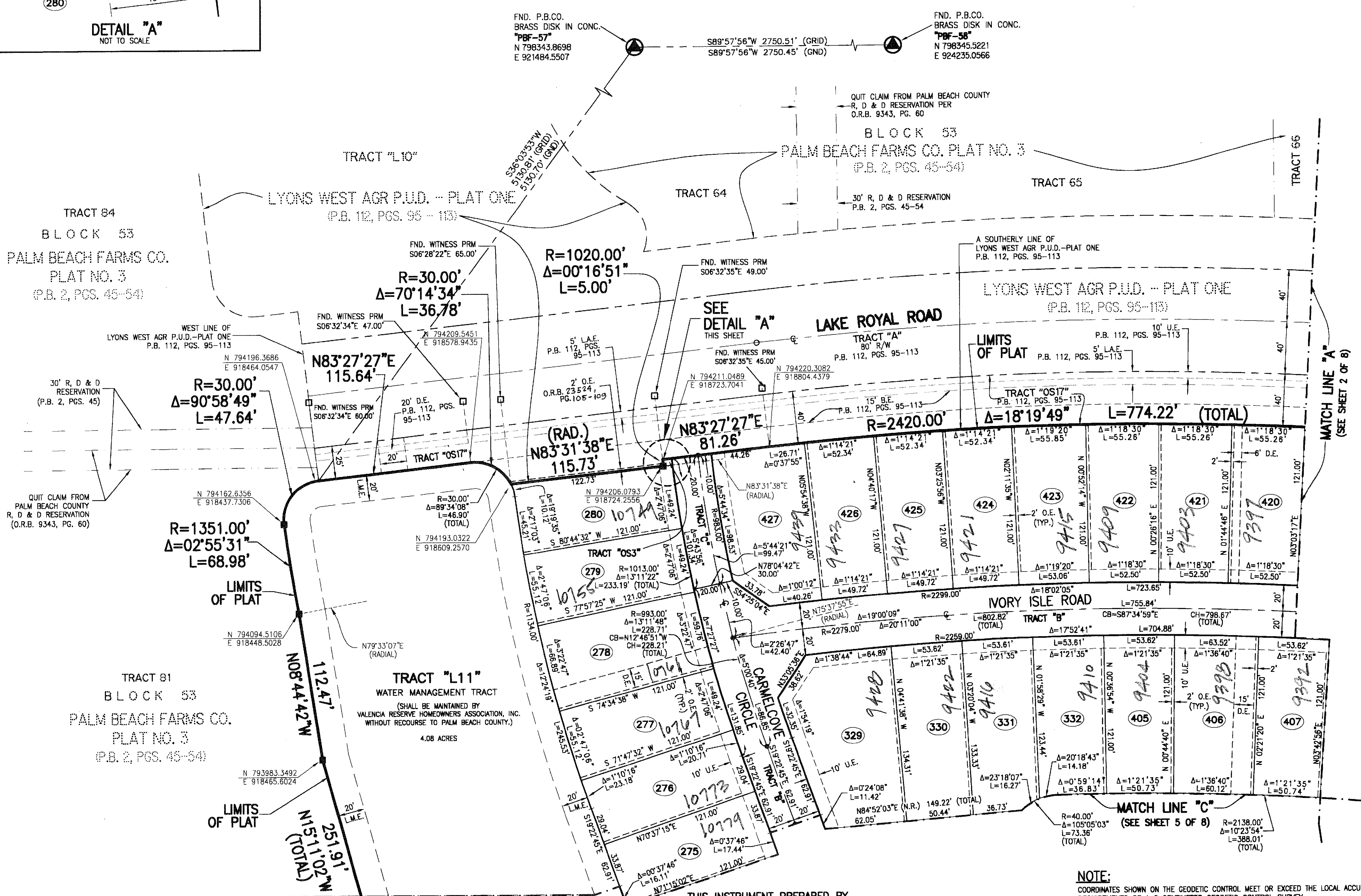
LYONS WEST AGR P.U.D. - PLAT FOUR

BEING A REPLAT OF A PORTION OF TRACTS 76 THROUGH 79, TRACTS 81, 88, 92, 93, ALL OF TRACTS 80, TRACTS 89 THROUGH 91, AND A PORTION OF ROAD, DYKE AND DITCH RESERVATION, 30 FEET IN WIDTH, ALL LYING WITHIN BLOCK 53, PALM BEACH FARMS CO. PLAT NO. 3, PLAT BOOK 2, PAGES 45 THROUGH 54, PUBLIC RECORDS, PALM BEACH COUNTY, FLORIDA. TOGETHER WITH A REPLAT OF A PORTION OF TRACTS "OS4", "L6" AND "OS25", LYONS WEST AGR P.U.D.-PLAT ONE, PLAT BOOK 112, PAGES 95 THROUGH 113, PUBLIC RECORDS, PALM BEACH COUNTY, FLORIDA. ALL LYING WITHIN SECTIONS 30 AND 31, TOWNSHIP 45 SOUTH, RANGE 42 EAST, PALM BEACH COUNTY, FLORIDA

SHEET 3 OF 8 AUGUST, 2009



- LEGEND:**
- - SET PERMANENT REFERENCE MONUMENT, L.B. #7062
 - - FOUND PERMANENT REFERENCE MONUMENT, L.B. #7062
 - - SET PERMANENT CONTROL POINT, L.B. #7062
 - - FOUND PERMANENT CONTROL POINT, L.B. #7062
 - Δ - DELTA ANGLE
 - B.E. - BUFFER EASEMENT
 - CB - CHORD BEARING
 - CH - CHORD DISTANCE
 - ⊙ - CENTERLINE
 - D.B. - DEED BOOK
 - D.E. - DRAINAGE EASEMENT
 - L - ARC LENGTH
 - L - LIMITED ACCESS EASEMENT
 - L.M.A.E. - LAKE MAINTENANCE ACCESS EASEMENT
 - L.M.E. - LAKE MAINTENANCE EASEMENT
 - L.W.D.D. - LAKE WORTH DRAINAGE DISTRICT (N.R.)
 - N.R. - NOT RADIAL
 - N.T.S. - NOT TO SCALE
 - O.R.B. - OFFICIAL RECORD BOOK
 - O.E. - OVERHANG EASEMENT
 - P.B.C.U.E. - PALM BEACH COUNTY UTILITY EASEMENT
 - P.B. - PLAT BOOK
 - P.C.P. - PERMANENT CONTROL POINT
 - PGS. - PAGES
 - P.O.B. - POINT OF BEGINNING
 - P.O.C. - POINT OF COMMENCEMENT
 - P.S.M. - PROFESSIONAL SURVEYOR AND MAPPER
 - R - RADIUS
 - R/W - RIGHT-OF-WAY
 - R. D. & D. - ROAD, DYKE AND DITCH RESERVATION
 - U.E. - UTILITY EASEMENT
- N 1000000.0000
E 1000000.0000 - DENOTES STATE PLANE COORDINATES



THIS INSTRUMENT PREPARED BY
 WILBUR F. DIVINE, P.S.M. 4190, STATE OF FLORIDA
 ARCADIS U.S., INC.
 ENGINEERS PLANNERS SURVEYORS
 2081 VISTA PARKWAY
 WEST PALM BEACH, FLORIDA 33411
 L.B. #7062

NOTE:
 COORDINATES SHOWN ON THE GEODETIC CONTROL MEET OR EXCEED THE LOCAL ACCURACY REQUIREMENTS OF A 2 CENTIMETER GEODETIC CONTROL SURVEY.
 COORDINATES SHOWN ARE GRID COORDINATES DATUM = NAD 83 (1990 ADJUSTMENT) AS READJUSTED BY PALM BEACH COUNTY IN 1998.
 ZONE = FLORIDA EAST ZONE
 LINEAR UNIT = U.S. SURVEY FEET
 COORDINATE SYSTEM = 1983 STATE PLANE TRANSVERSE MERCATOR PROJECTION
 ALL DISTANCES ARE GROUND
 SCALE FACTOR = 1.0000207
 PLAT BEARING = GRID BEARING

