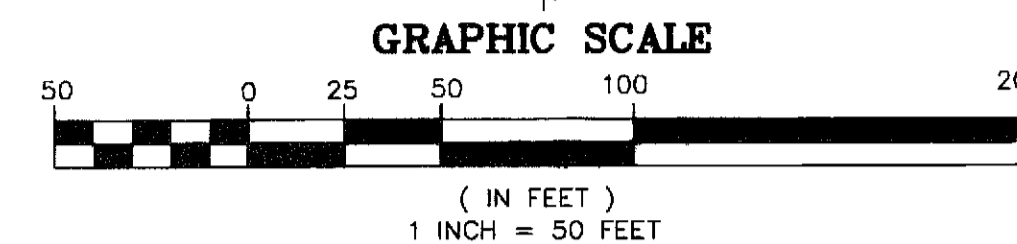


UNIVERSITY CENTRE

BEING A REPLAT OF A PORTION OF TRACT 13, BLOCK 1, THE PALM BEACH FARMS CO. PLAT NO.3 AS RECORDED IN PLAT BOOK 2, PAGES 45 THROUGH 54 OF THE PUBLIC RECORDS OF PALM BEACH COUNTY, FLORIDA, LYING IN SECTION 31, TOWNSHIP 43 SOUTH, RANGE 42 EAST, VILLAGE OF ROYAL PALM BEACH, PALM BEACH COUNTY, FLORIDA

THIS INSTRUMENT PREPARED BY
DAVID P. LINDLEY
OF
CAULFIELD and WHEELER, INC.
SURVEYORS - ENGINEERS - PLANNERS
7301-A WEST PALMETTO PARK ROAD, SUITE 100A
BOCA RATON, FLORIDA 33433 - (561)392-1991
SEPTEMBER - 2009

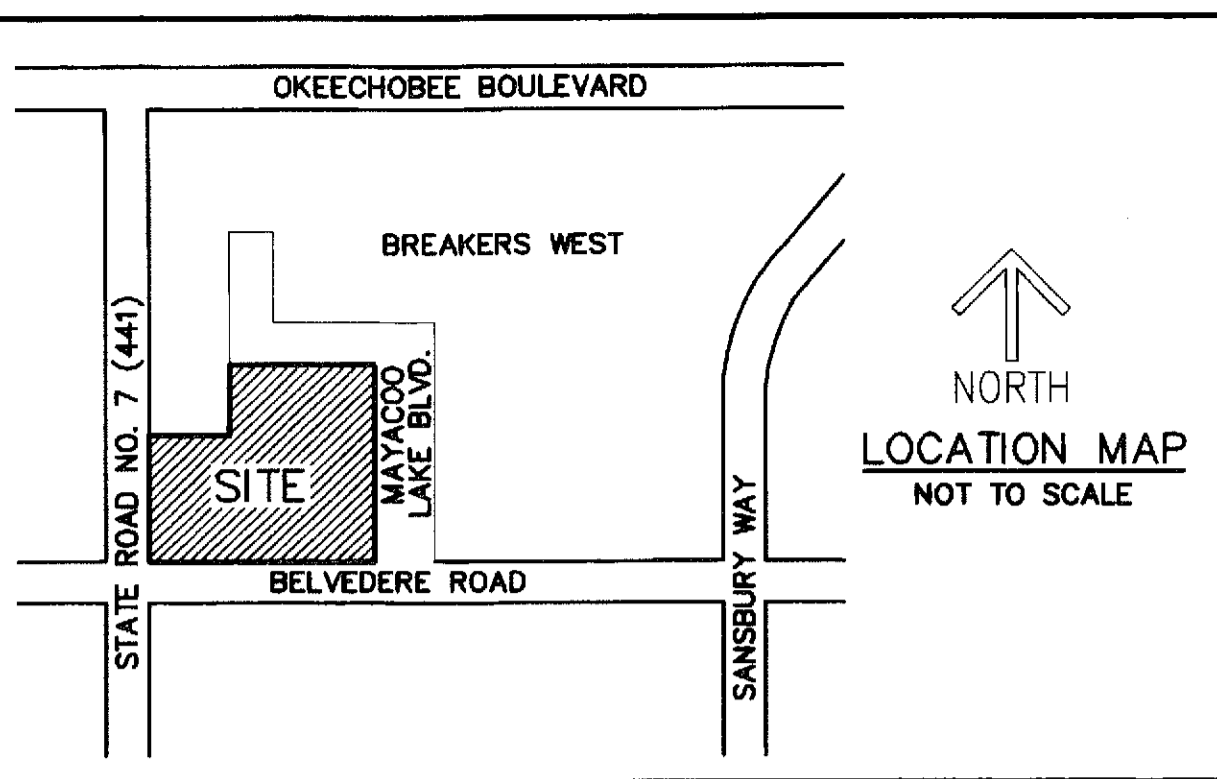


STATE OF FLORIDA
COUNTY OF PALM BEACH
THIS PLAT WAS FILED FOR
RECORD AT _____ M.
THIS _____ DAY OF _____
A.D. 20____ AND DULY RECORDED
IN PLAT BOOK _____ ON
PAGES _____ AND _____

SHARON R. BOCK
CLERK AND COMPTROLLER

BY: _____
DEPUTY CLERK

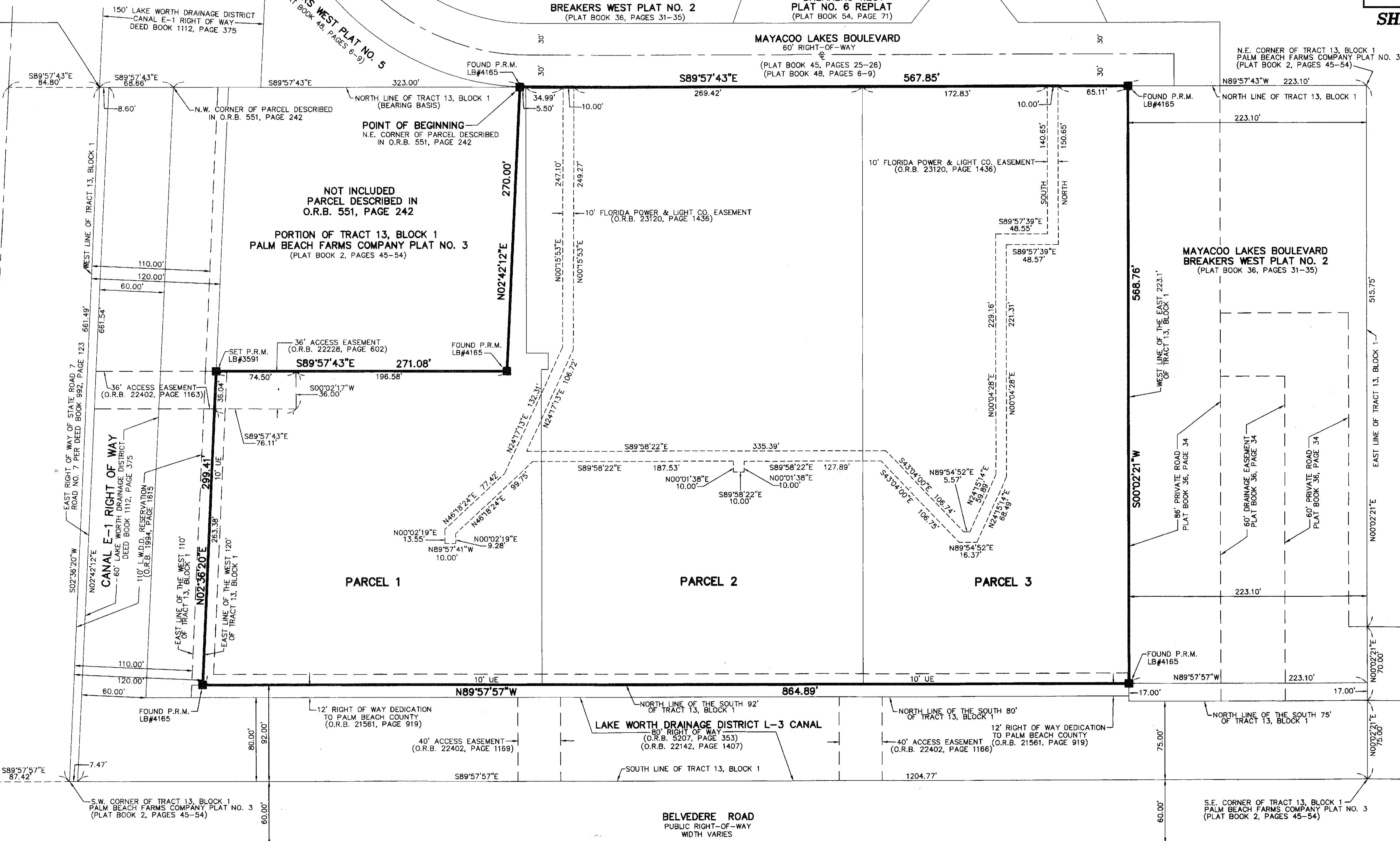
SHEET 4 OF 4



POINT OF COMMENCEMENT
N.W. CORNER OF TRACT 13, BLOCK 1
PALM BEACH FARMS COMPANY PLAT NO. 3
(PLAT BOOK 2, PAGES 45-54)

STATE ROAD NO. 7 (U.S. 441)
PUBLIC RIGHT-OF-WAY
WIDTH VARIES

WEST LINE SECTION 31, TOWNSHIP 43 SOUTH, RANGE 42 EAST
N02°49'55"E 661.62'



S.E. CORNER OF SECTION 25
TOWNSHIP 43 SOUTH, RANGE 41 EAST
(CALCULATED POSITION)

FLORIDA POWER & LIGHT CO. EASEMENT DETAIL

SHEET INDEX	
SHEET 1	COVER
SHEET 2	MAP
SHEET 3	PALM BEACH COUNTY UTILITY EASEMENT DETAIL
SHEET 4	FLORIDA POWER & LIGHT CO. EASEMENT DETAIL