

PERIMETER

SURVEYING & MAPPING
Prepared by: Jeff S. Hodapp, P.S.M.
Certificate of Authorization No. LB7264
951 Broken Sound Parkway, Suite 320
Boca Raton, Florida 33487
Tel: (561) 241-9988
Fax: (561) 241-5182

N.W. CORNER
SECTION 20-45-43
FOUND P.B.C. BRASS
DISK IN CONC. MON.

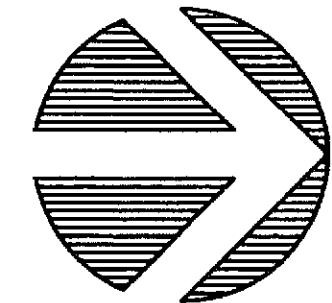
S07°22'54"E 376.96' (GRID)
S00°12'55"E (PLAT) 376.94' (GROUND)
W. LINE SECTION 20-45-43

VISTABELLA AT RENAISSANCE COMMONS REPLAT 2, A P.U.D.

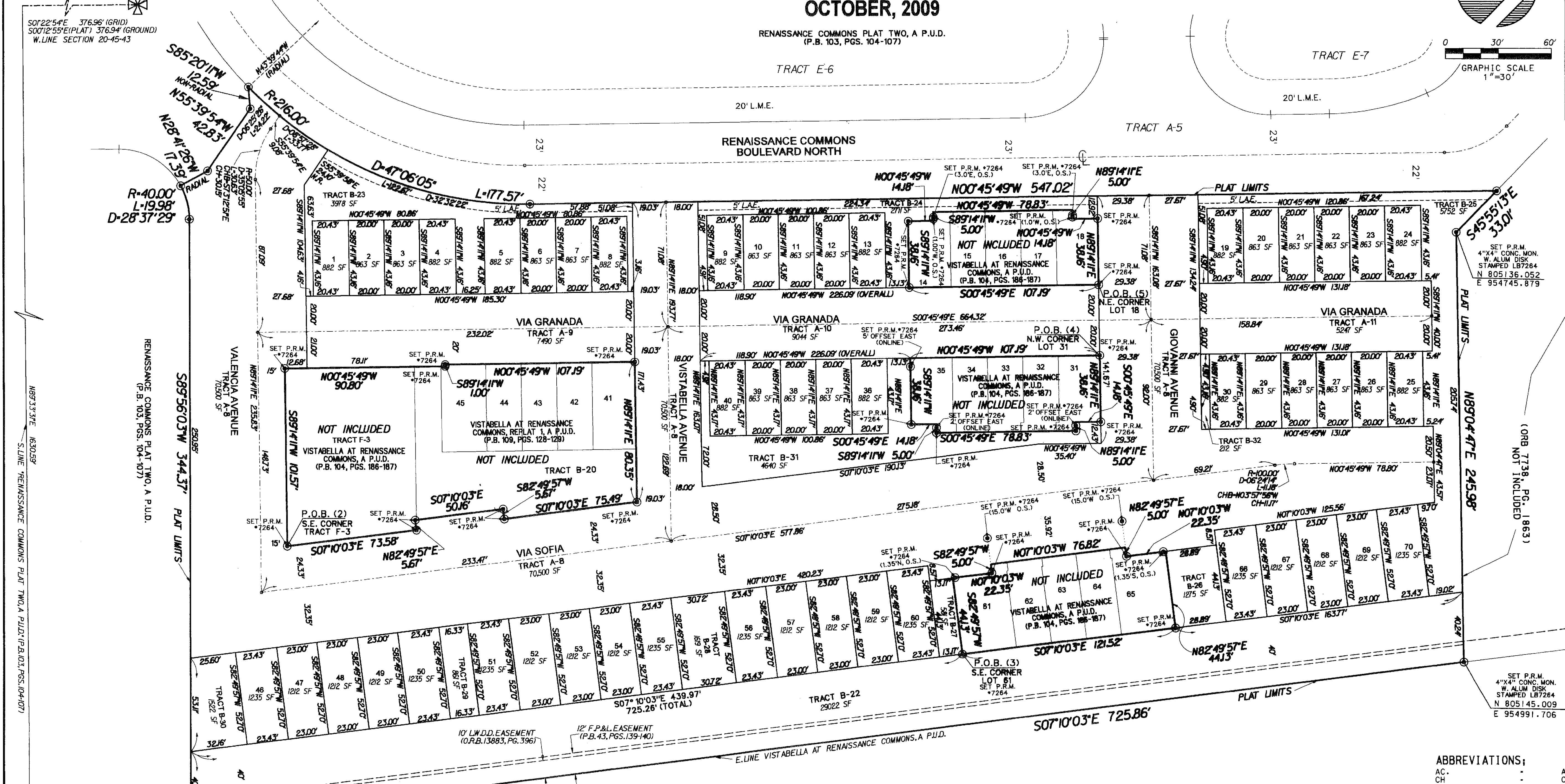
A REPLAT OF LOTS 1-13, 19-30, 46-60, 66-70 AND TRACTS A-7 AND B-9 THROUGH B-17, "VISTABELLA AT RENAISSANCE COMMONS, A P.U.D." (P.B. 104, PGS. 186-187, P.B.C.R.) AND A REPLAT OF LOTS 36-40 AND TRACT B-21, "VISTABELLA AT RENAISSANCE COMMONS REPLAT 1, A P.U.D. (P.B. 109, PGS. 128-129, P.B.C.R.) IN SECTION 17, TOWNSHIP 45 SOUTH, RANGE 43, EAST, CITY OF BOYNTON BEACH, PALM BEACH COUNTY, FLORIDA.

OCTOBER, 2009

RENAISSANCE COMMONS PLAT TWO, A P.U.D.
(P.B. 103, PGS. 104-107)



0 30' 60'
GRAPHIC SCALE
1"=30'



RENAISSANCE COMMONS PLAT TWO, A P.U.D.
(P.B. 103, PGS. 104-107)

VIA GRANADA
TRACT A-9
7490 SF

VIA GRANADA
TRACT A-10
9044 SF

VIA GRANADA
TRACT A-11
5247 SF

VIA GRANADA
TRACT A-12
5247 SF

VIA GRANADA
TRACT A-13
5247 SF

VIA GRANADA
TRACT A-14
5247 SF

VIA GRANADA
TRACT A-15
5247 SF

VIA GRANADA
TRACT A-16
5247 SF

VIA GRANADA
TRACT A-17
5247 SF

VIA GRANADA
TRACT A-18
5247 SF

VIA GRANADA
TRACT A-19
5247 SF

VIA GRANADA
TRACT A-20
5247 SF

VIA GRANADA
TRACT A-21
5247 SF

VIA GRANADA
TRACT A-22
5247 SF

VIA GRANADA
TRACT A-23
5247 SF

VIA GRANADA
TRACT A-24
5247 SF

P.O.B. (1)
S.E. CORNER TRACT B-9
VISTABELLA AT RENAISSANCE
COMMONS, A P.U.D.
(P.B. 104, PGS. 186-187)
FOUND 1/2" I.R.C. #LB7264
SET P.R.M. #LB7264

P.O.B. (2)
S.E. CORNER TRACT F-3

P.O.B. (3)
S.E. CORNER LOT 81

P.O.B. (4)
N.W. CORNER LOT 31

P.O.B. (5)
N.E. CORNER LOT 18

P.O.B. (6)
S.E. CORNER LOT 18

P.O.B. (7)
S.E. CORNER LOT 18

P.O.B. (8)
S.E. CORNER LOT 18

P.O.B. (9)
S.E. CORNER LOT 18

P.O.B. (10)
S.E. CORNER LOT 18

P.O.B. (11)
S.E. CORNER LOT 18

P.O.B. (12)
S.E. CORNER LOT 18

P.O.B. (13)
S.E. CORNER LOT 18

P.O.B. (14)
S.E. CORNER LOT 18

P.O.B. (15)
S.E. CORNER LOT 18

P.O.B. (16)
S.E. CORNER LOT 18

P.O.B. (17)
S.E. CORNER LOT 18

10' L.W.D.D. EASEMENT
(P.B. 13883, PG. 396)

12' F.P. & L. EASEMENT
(P.B. 43, PGS. 139-140)

10' L.W.D.D. EASEMENT
(P.B. 13883, PG. 396)

12' F.P. & L. EASEMENT
(P.B. 43, PGS. 139-140)

10' L.W.D.D. EASEMENT
(P.B. 13883, PG. 396)

12' F.P. & L. EASEMENT
(P.B. 43, PGS. 139-140)

10' L.W.D.D. EASEMENT
(P.B. 13883, PG. 396)

12' F.P. & L. EASEMENT
(P.B. 43, PGS. 139-140)

10' L.W.D.D. EASEMENT
(P.B. 13883, PG. 396)

12' F.P. & L. EASEMENT
(P.B. 43, PGS. 139-140)

10' L.W.D.D. EASEMENT
(P.B. 13883, PG. 396)

12' F.P. & L. EASEMENT
(P.B. 43, PGS. 139-140)

10' L.W.D.D. EASEMENT
(P.B. 13883, PG. 396)

12' F.P. & L. EASEMENT
(P.B. 43, PGS. 139-140)

10' L.W.D.D. EASEMENT
(P.B. 13883, PG. 396)

12' F.P. & L. EASEMENT
(P.B. 43, PGS. 139-140)

10' L.W.D.D. EASEMENT
(P.B. 13883, PG. 396)

SET P.R.M. #7264
(3.0'E, O.S.)

SET P.R.M. #7264
(3.0'E, O.S.)

SET P.R.M. #7264
(3.0'E, O.S.)

SET P.R.M. #7264
(3.0'E, O.S.)

SET P.R.M. #7264
(3.0'E, O.S.)

SET P.R.M. #7264
(3.0'E, O.S.)

SET P.R.M. #7264
(3.0'E, O.S.)

SET P.R.M. #7264
(3.0'E, O.S.)

SET P.R.M. #7264
(3.0'E, O.S.)

SET P.R.M. #7264
(3.0'E, O.S.)

SET P.R.M. #7264
(3.0'E, O.S.)

SET P.R.M. #7264
(3.0'E, O.S.)

SET P.R.M. #7264
(3.0'E, O.S.)

SET P.R.M. #7264
(3.0'E, O.S.)

SET P.R.M. #7264
(3.0'E, O.S.)

SET P.R.M. #7264
(3.0'E, O.S.)

SET P.R.M. #7264
(3.0'E, O.S.)

SET P.R.M. #7264
(3.0'E, O.S.)

SET P.R.M. #7264
(3.0'E, O.S.)

SET P.R.M. #7264
(3.0'E, O.S.)

SET P.R.M. #7264
(3.0'E, O.S.)

SET P.R.M. #7264
(3.0'E, O.S.)

SET P.R.M. #7264
(3.0'E, O.S.)

SET P.R.M. #7264
(3.0'E, O.S.)

SET P.R.M. #7264
(3.0'E, O.S.)

SET P.R.M. #7264
(3.0'E, O.S.)

SET P.R.M. #7264
(3.0'E, O.S.)

SET P.R.M. #7264
(3.0'E, O.S.)

SET P.R.M. #7264
(3.0'E, O.S.)

SET P.R.M. #7264
(3.0'E, O.S.)

SET P.R.M. #7264
(3.0'E, O.S.)

SET P.R.M. #7264
(3.0'E, O.S.)

SET P.R.M. #7264
(3.0'E, O.S.)

SET P.R.M. #7264
(3.0'E, O.S.)

SET P.R.M. #7264
(3.0'E, O.S.)

SET P.R.M. #7264
(3.0'E, O.S.)

SET P.R.M. #7264
(3.0'E, O.S.)

SET P.R.M. #7264
(3.0'E, O.S.)

SET P.R.M. #7264
(3.0'E, O.S.)

SET P.R.M. #7264
(3.0'E, O.S.)

SET P.R.M. #7264
(3.0'E, O.S.)

SET P.R.M. #7264
(3.0'E, O.S.)

SET P.R.M. #7264
(3.0'E, O.S.)

SET P.R.M. #7264
(3.0'E, O.S.)

SET P.R.M. #7264
(3.0'E, O.S.)

SET P.R.M. #7264
(3.0'E, O.S.)

SET P.R.M. #7264
(3.0'E, O.S.)

SET P.R.M. #7264
(3.0'E, O.S.)

SET P.R.M. #7264
(3.0'E, O.S.)

SET P.R.M. #7264
(3.0'E, O.S.)

SET P.R.M. #7264
(3.0'E, O.S.)

ABBREVIATIONS:

AC.	ACRES
CH.	CHORD BEARING
CHB.	CHORD BEARING
CONC.	CONCRETE
COR.	CORNER
D.	DELTA (CENTRAL ANGLE)
D.E.	DRAINAGE EASEMENT
L.	LENGTH
L.A.E.	LIMITED ACCESS EASEMENT
L.B.	LICENSED BUSINESS
L.B.E.	LANDSCAPE BUFFER EASEMENT
L.M.E.	LAKE MAINTENANCE EASEMENT
L.S.	LICENSED SURVEYOR
L.S.E.	LIFT STATION EASEMENT
L.W.D.D.	LAKE WORTH DRAINAGE DISTRICT MONUMENT
O.R.B.	OFFICIAL RECORDS BOOK
O.S.	OFFSET
N.R.	NON-RADIAL
P.B.	PLAT BOOK
P.B.C.R.	PALM BEACH COUNTY RECORDS
P.C.	PAGE
P.C.P.	PERMANENT CONTROL POINT
P.O.B.	POINT OF BEGINNING
P.O.C.	POINT OF COMMENCEMENT
P.P.M.	PERMANENT REFERENCE MONUMENT
P.S.M.	PROFESSIONAL SURVEYOR & MAPPER
P.U.D.	PLANNED UNIT DEVELOPMENT
R.	RADIUS
R/W.	RIGHT-OF-WAY
SEC.	SECTION
S.F.	SQUARE FEET
U.E.	UTILITY EASEMENT

LEGEND:

⊙	SET P.R.M. (UNLESS OTHERWISE NOTED)-4" DIAMETER CONC. MON. WITH ALUMINUM DISK STAMPED #LB7264
○	P.C.P.
⊖	CENTERLINE

L.W.D.D. CANAL E-4