

COMMUNITY OF HOPE

BEING A REPLAT OF THE SOUTH HALF OF TRACT 42 AND THE EAST 448 FEET OF TRACT 12, BLOCK D, LOXAHATCHEE GROVES, PLAT BOOK 12, PAGE 29, PUBLIC RECORDS OF PALM BEACH COUNTY, FLORIDA, LYING IN SECTION 20, TOWNSHIP 43 SOUTH, RANGE 41 EAST, THE TOWN OF LOXAHATCHEE GROVES, PALM BEACH COUNTY, FLORIDA

JANUARY 2010 SHEET 2 OF 2

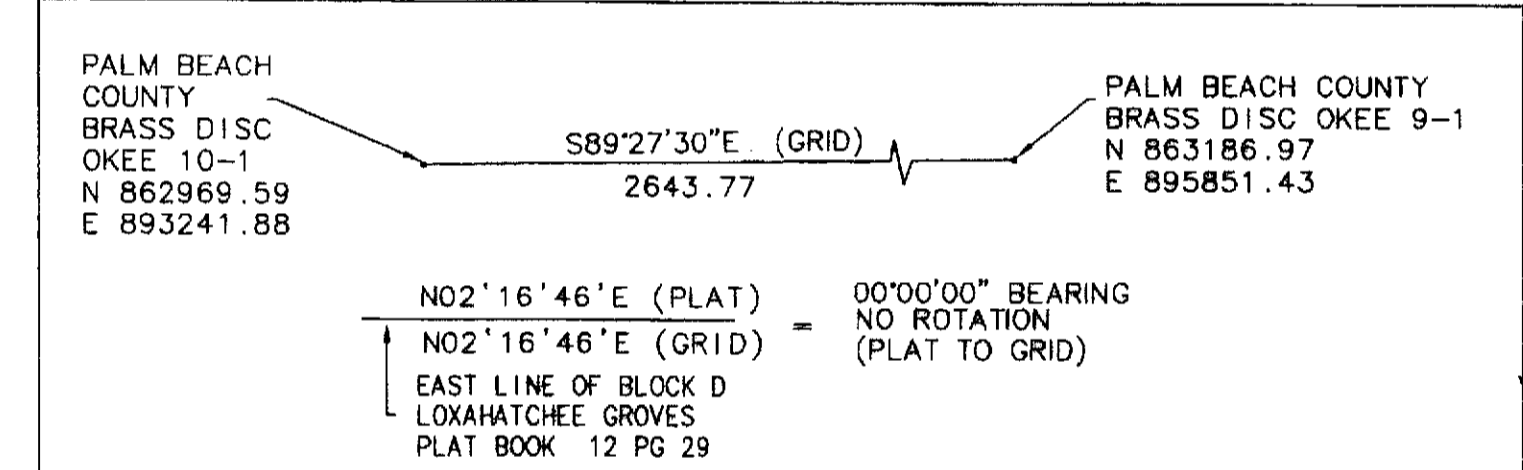
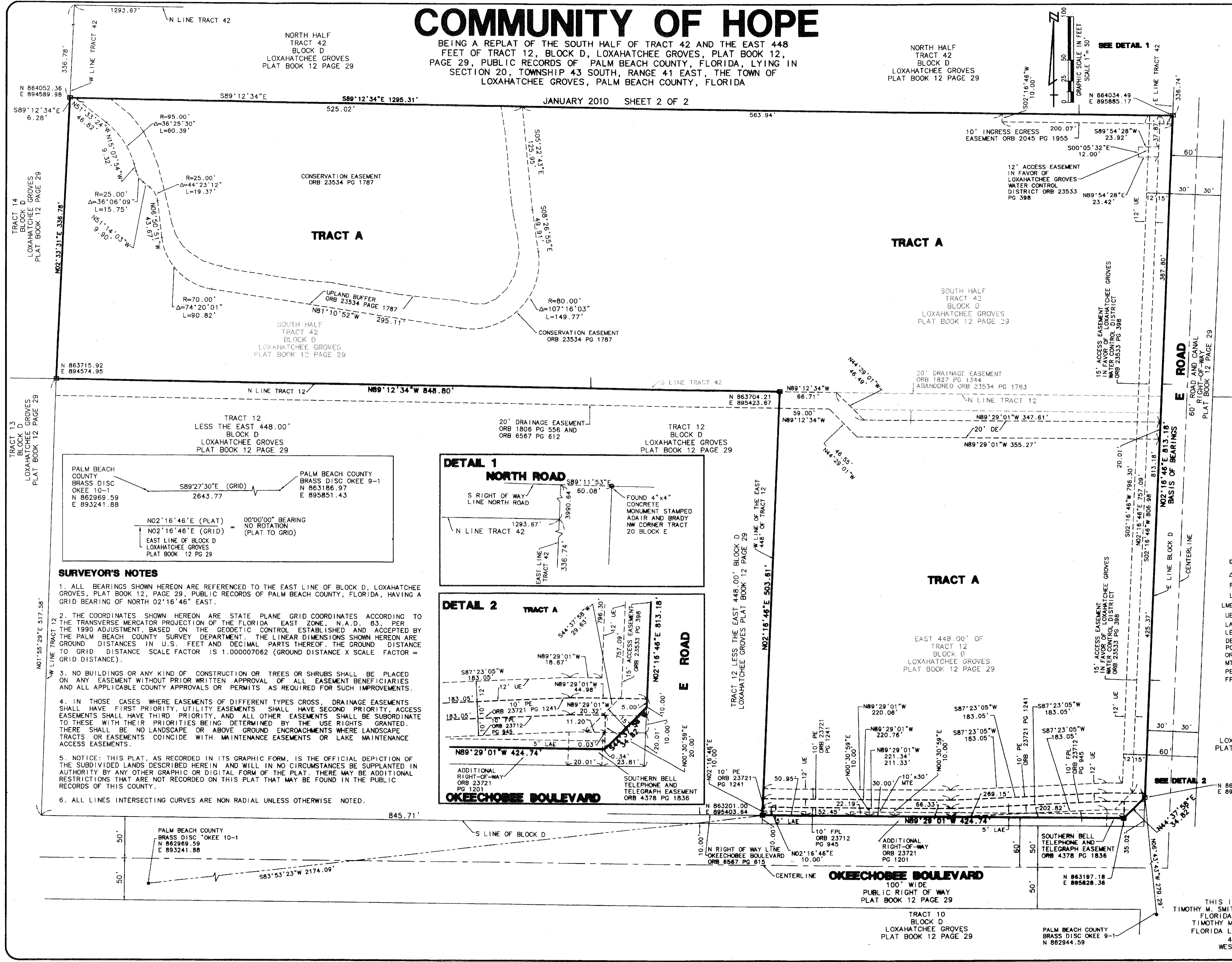
77

STATE OF FLORIDA
COUNTY OF PALM BEACH

THIS PLAT WAS FILED FOR RECORD
THIS _____ DAY OF _____
AD. 2010 AND DULY RECORDED
IN PLAT BOOK _____ ON PAGES
_____ AND _____

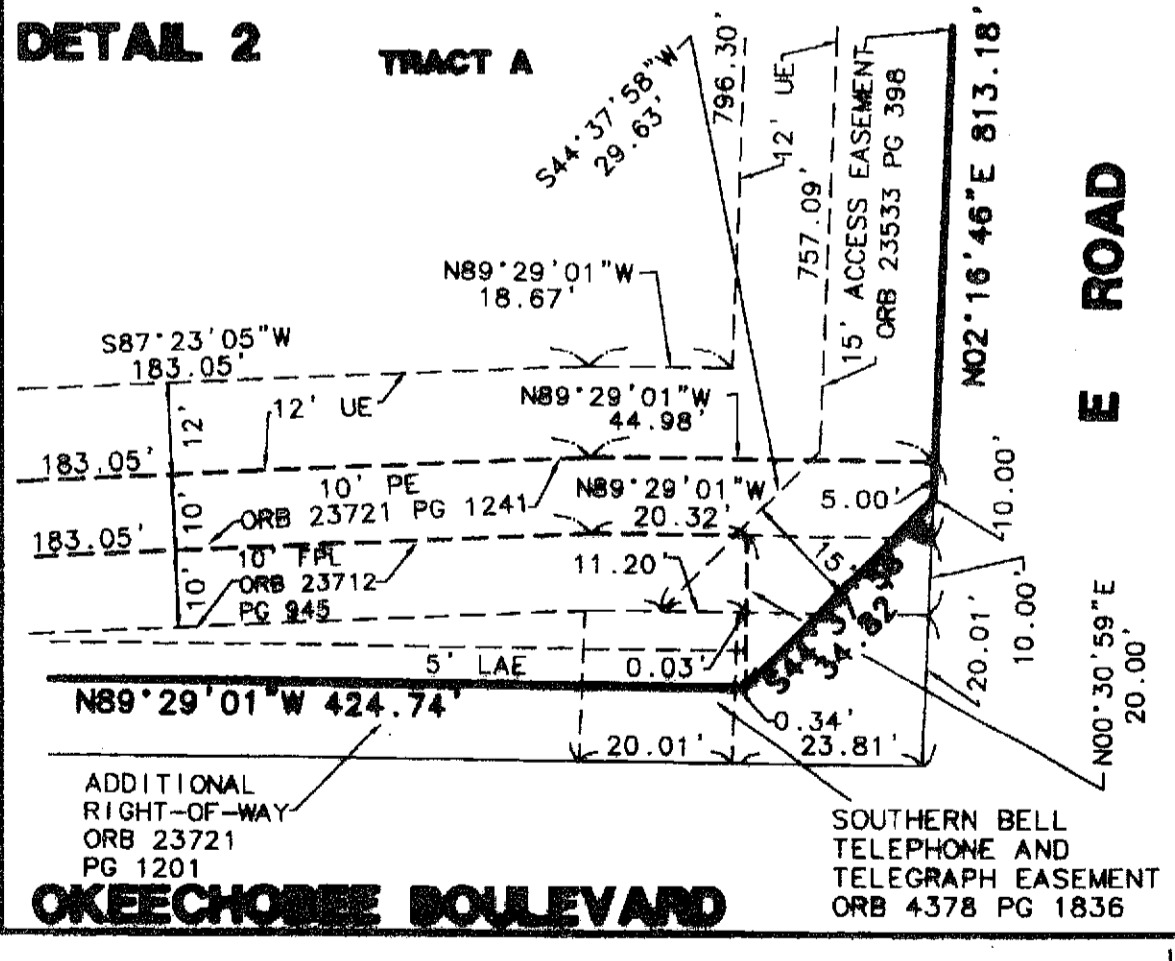
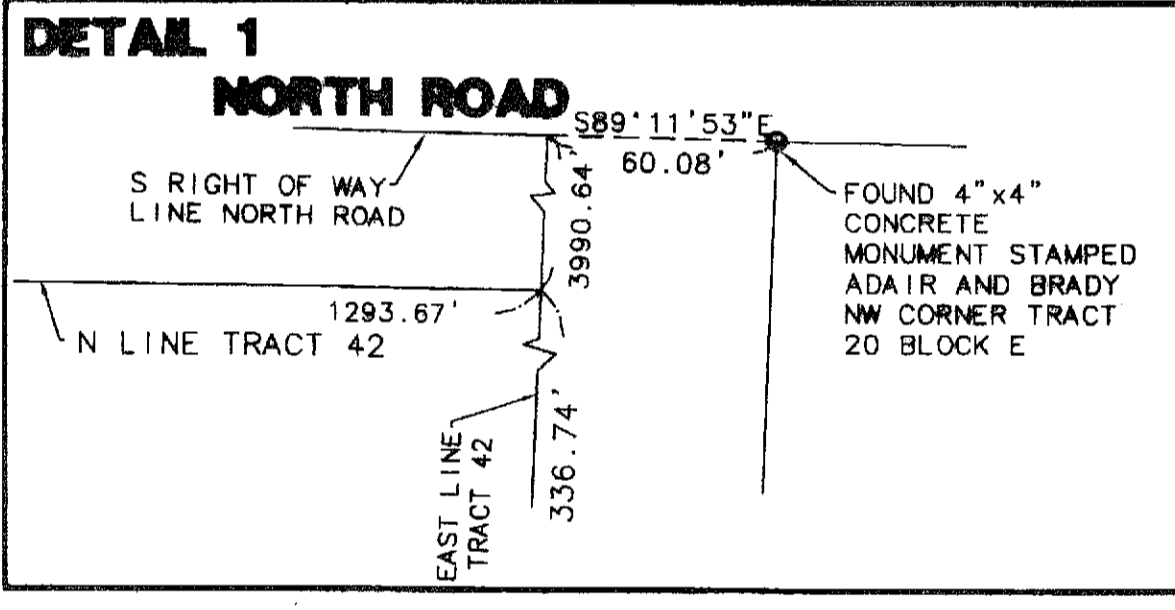
SHARON R. BOCK, CLERK AND
COMPTROLLER - PALM BEACH COUNTY
BY: _____, D.C.

CIRCUIT COURT SEAL



SURVEYOR'S NOTES

- ALL BEARINGS SHOWN HEREON ARE REFERENCED TO THE EAST LINE OF BLOCK D, LOXAHATCHEE GROVES, PLAT BOOK 12, PAGE 29, PUBLIC RECORDS OF PALM BEACH COUNTY, FLORIDA, HAVING A GRID BEARING OF NORTH 02°16'46" EAST.
- THE COORDINATES SHOWN HEREON ARE STATE PLANE GRID COORDINATES ACCORDING TO THE TRANSVERSE MERCATOR PROJECTION OF THE FLORIDA EAST ZONE, N.A.D. 83, PER THE 1990 ADJUSTMENT, BASED ON THE GEODETIC CONTROL ESTABLISHED AND ACCEPTED BY THE PALM BEACH COUNTY SURVEY DEPARTMENT. THE LINEAR DIMENSIONS SHOWN HEREON ARE GROUND DISTANCES IN U.S. FEET AND DECIMAL PARTS THEREOF. THE GROUND DISTANCE TO GRID DISTANCE SCALE FACTOR IS 1.000007062 (GROUND DISTANCE X SCALE FACTOR = GRID DISTANCE).
- NO BUILDINGS OR ANY KIND OF CONSTRUCTION OR TREES OR SHRUBS SHALL BE PLACED ON ANY EASEMENT WITHOUT PRIOR WRITTEN APPROVAL OF ALL EASEMENT BENEFICIARIES AND ALL APPLICABLE COUNTY APPROVALS OR PERMITS AS REQUIRED FOR SUCH IMPROVEMENTS.
- IN THOSE CASES WHERE EASEMENTS OF DIFFERENT TYPES CROSS, DRAINAGE EASEMENTS SHALL HAVE FIRST PRIORITY, UTILITY EASEMENTS SHALL HAVE SECOND PRIORITY, ACCESS EASEMENTS SHALL HAVE THIRD PRIORITY, AND ALL OTHER EASEMENTS SHALL BE SUBORDINATE TO THESE WITH THEIR PRIORITIES BEING DETERMINED BY THE USE RIGHTS GRANTED. THERE SHALL BE NO LANDSCAPE OR ABOVE GROUND ENCROACHMENTS WHERE LANDSCAPE TRACTS OR EASEMENTS COINCIDE WITH MAINTENANCE EASEMENTS OR LAKE MAINTENANCE ACCESS EASEMENTS.
- NOTICE: THIS PLAT, AS RECORDED IN ITS GRAPHIC FORM, IS THE OFFICIAL DEPICTION OF THE SUBDIVIDED LANDS DESCRIBED HEREIN AND WILL IN NO CIRCUMSTANCES BE SUPPLEMENTED IN AUTHORITY BY ANY OTHER GRAPHIC OR DIGITAL FORM OF THE PLAT. THERE MAY BE ADDITIONAL RESTRICTIONS THAT ARE NOT RECORDED ON THIS PLAT THAT MAY BE FOUND IN THE PUBLIC RECORDS OF THIS COUNTY.
- ALL LINES INTERSECTING CURVES ARE NON RADIAL UNLESS OTHERWISE NOTED.



LEGEND

- DENOTES 4"x4" CONCRETE MONUMENT STAMPED "PRM LB6865" SET
- △ DENOTES DELTA ANGLE
- R CURVE RADIUS LENGTH
- L CURVE ARC LENGTH
- LME LAKE MAINTENANCE EASEMENT
- UE UTILITY EASEMENT
- LAE LIMITED ACCESS EASEMENT
- LBE LANDSCAPE BUFFER EASEMENT
- DE DRAINAGE EASEMENT
- PG PAGE
- ORB OFFICIAL RECORDS BOOK
- MTE MASS TRANSIT EASEMENT
- PE PATHWAY EASEMENT
- FPL FLORIDA POWER AND LIGHT COMPANY

THIS INSTRUMENT WAS PREPARED BY
TIMOTHY M. SMITH, PROFESSIONAL SURVEYOR AND MAPPER
FLORIDA CERTIFICATE NO. LS 004676
TIMOTHY M. SMITH LAND SURVEYING, INC.
FLORIDA LICENSED BUSINESS NO. LB 6865
4546 CAMBRIDGE STREET
WEST PALM BEACH, FL 33415
(561) 602-8160