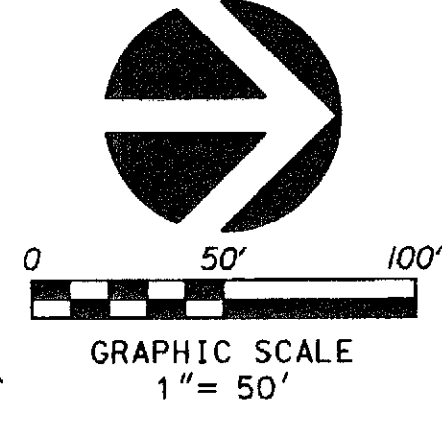


08158 5043.000
PERIMETER
 SURVEYING & MAPPING
 Certificate of Authorization No. LB7264
 Prepared by: Jeff S. Hodapp, P.S.M.
 949A Clint Moore Road
 Boca Raton, Florida 33487
 Tel: (561) 241-9988
 Fax: (561) 241-5182



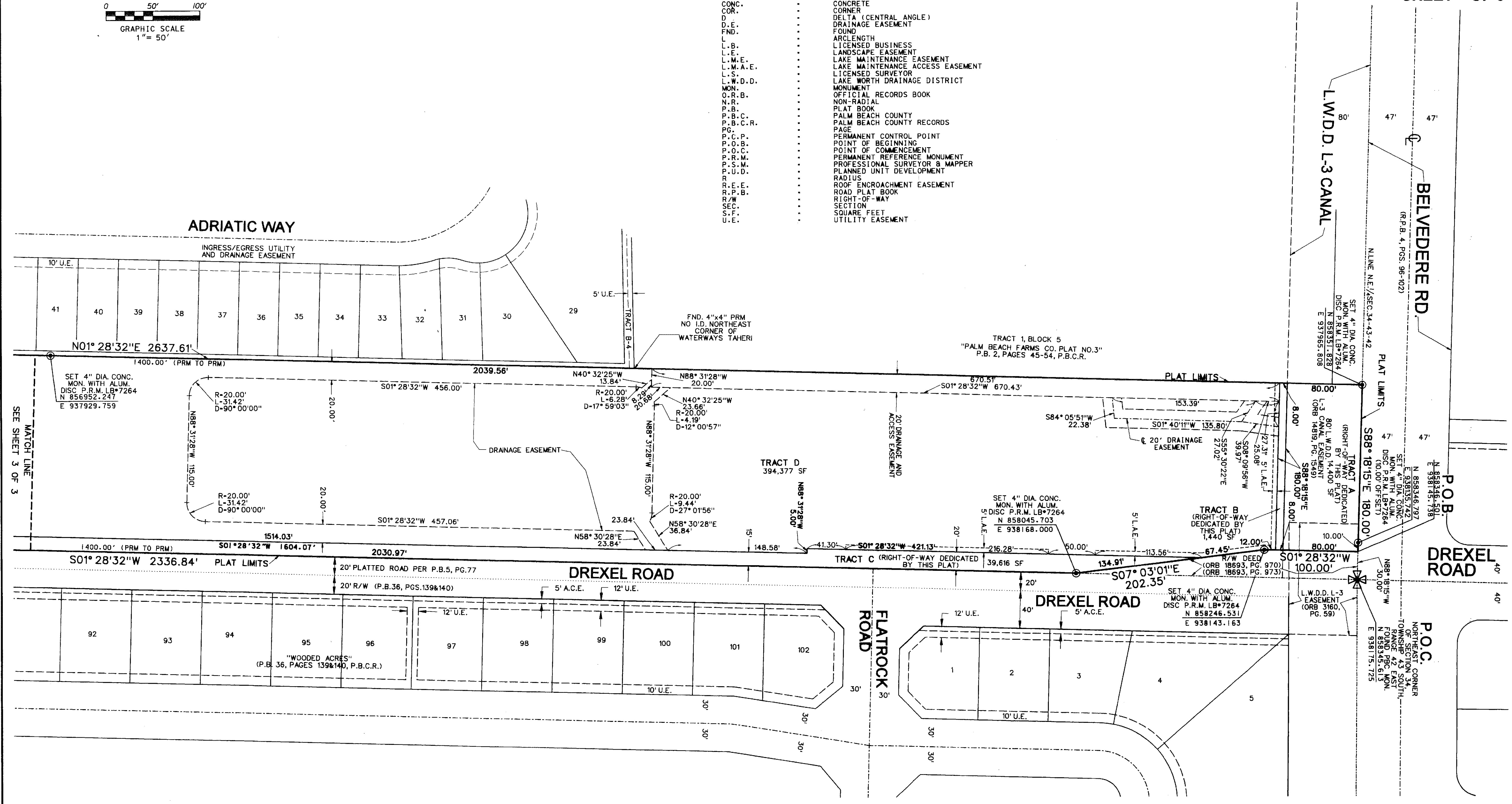
BOYS AND GIRLS CLUB - HAVERHILL

A REPLAT OF A PORTION OF THE 210.00 FOOT WIDE STRIP OF LAND EAST OF BLOCK 5,
 "PALM BEACH FARMS COMPANY PLAT NO. 3" (P.B. 2, PGS. 45-54, P.B.C.R.),
 IN SECTION 34, TOWNSHIP 43 SOUTH, RANGE 42 EAST, PALM BEACH COUNTY, FLORIDA.
 MAY, 2010.

88

SHEET 2 OF 3

- LEGEND:**
- ⊙ SET P.R.M. (UNLESS OTHERWISE NOTED)-4" X4" CONC. MON. WITH ALUMINUM DISK STAMPED P.R.M. •LB7264 CENTERLINE
- ABBREVIATIONS:**
- ALUM ALUMINUM
 - CH CHORD
 - CHB CHORD BEARING
 - CONC. CONCRETE
 - COR. CORNER
 - D DELTA (CENTRAL ANGLE)
 - D.E. DRAINAGE EASEMENT
 - FND. FOUND
 - L. LENGTH
 - L.B. LICENSED BUSINESS
 - L.E. LANDSCAPE EASEMENT
 - L.M.E. LAKE MAINTENANCE EASEMENT
 - L.M.A.E. LAKE MAINTENANCE ACCESS EASEMENT
 - L.S. LICENSED SURVEYOR
 - L.W.D.D. LAKE WORTH DRAINAGE DISTRICT
 - MON. MONUMENT
 - O.R.B. OFFICIAL RECORDS BOOK
 - N.R. NON-RADIAL
 - P.B. PLAT BOOK
 - P.B.C. PALM BEACH COUNTY
 - P.B.C.R. PALM BEACH COUNTY RECORDS
 - PG. PAGE
 - P.C.P. PERMANENT CONTROL POINT
 - P.O.B. POINT OF BEGINNING
 - P.O.C. POINT OF COMMENCEMENT
 - P.R.M. PERMANENT REFERENCE MONUMENT
 - P.S.M. PROFESSIONAL SURVEYOR & MAPPER
 - P.U.D. PLANNED UNIT DEVELOPMENT
 - R. RADIUS
 - R.E.E. ROOF ENCROACHMENT EASEMENT
 - R.P.B. ROAD PLAT BOOK
 - R/W. RIGHT-OF-WAY
 - SEC. SECTION
 - S.F. SQUARE FEET
 - U.E. UTILITY EASEMENT



SEE SHEET 3 OF 3

LINE N.E./SEC. 34-43-42

BELVEDERE RD
(R.F.B. 4, PGS. 96-102)

P.O.B.

DREXEL ROAD

P.O.C.
NORTHEAST CORNER
OF SECTION 34,
RANGE 43 SOUTH,
TOWNSHIP 43 SOUTH,
FOUND PERC MON.
N 858345.613
E 938175.725