

PERIMETER

SURVEYING & MAPPING
 Certificate of Authorization No. LB7264
 Prepared by: Jeff S. Hodapp, P.S.M.
 949A Clint Moore Road
 Boca Raton, Florida 33487
 Tel: (561) 241-9988
 Fax: (561) 241-5182

BOYS AND GIRLS CLUB - HAVERHILL

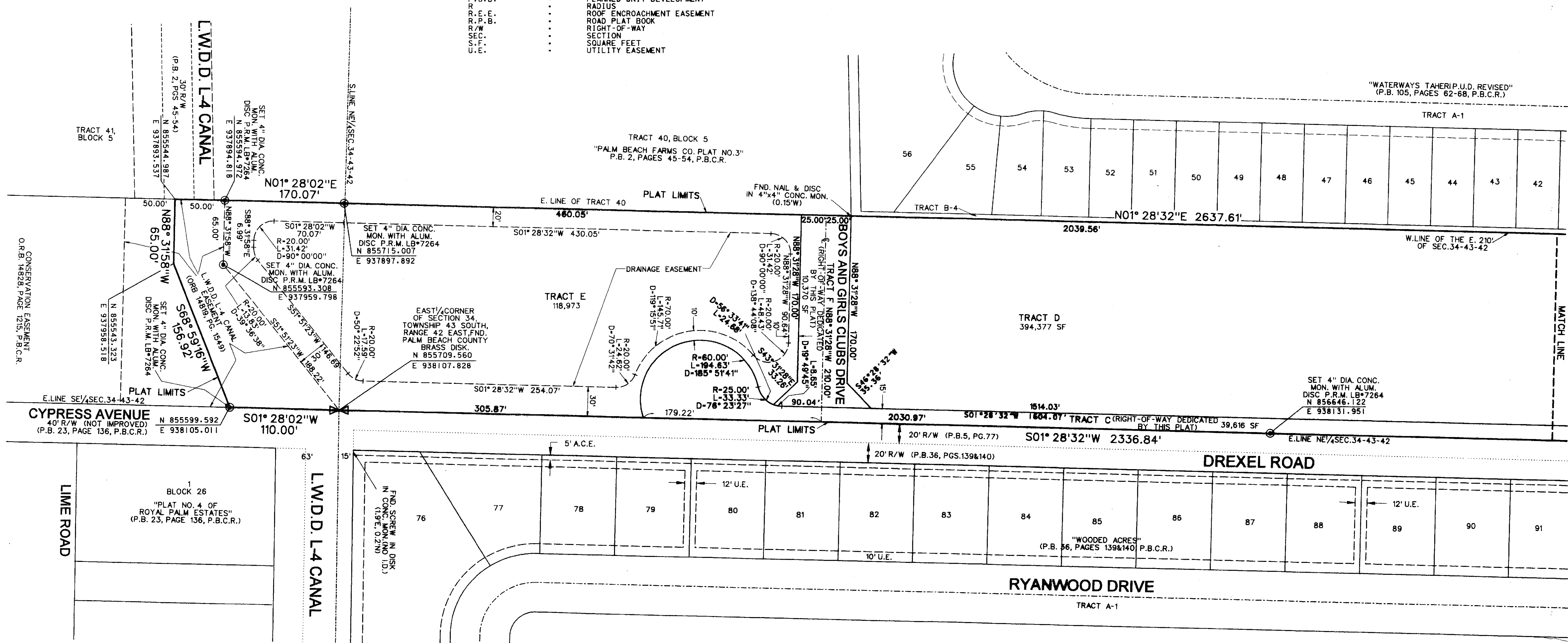
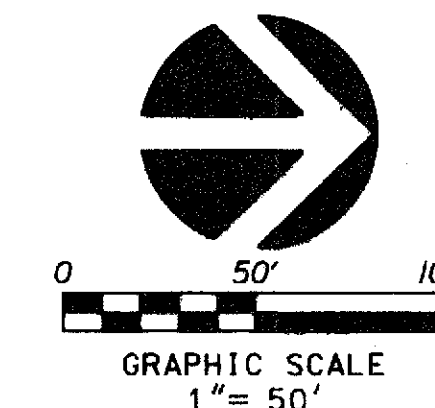
A REPLAT OF A PORTION OF THE 210.00 FOOT WIDE STRIP OF LAND EAST OF BLOCK 5,
 "PALM BEACH FARMS COMPANY PLAT NO. 3" (P.B. 2, PGS. 45-54, P.B.C.R.),
 IN SECTION 34, TOWNSHIP 43 SOUTH, RANGE 42 EAST, PALM BEACH COUNTY, FLORIDA.
 MAY, 2010.

LEGEND:

- ⊙ SET P.R.M. (UNLESS OTHERWISE NOTED) 1-4" X 4" CONC. MON. WITH ALUMINUM DISK STAMPED P.R.M. #LB7264 CENTERLINE
- ⊙ CENTERLINE

ABBREVIATIONS:

- ALUM ALUMINUM
- CH CHORD
- CHB CHORD BEARING
- CONC. CONCRETE
- COR. CORNER
- D DELTA (CENTRAL ANGLE)
- D.E. DRAINAGE EASEMENT
- FND. FOUND
- ARLENGTH ARLENGTH
- L.B. LICENSED BUSINESS
- L.E. LANDSCAPE EASEMENT
- L.M.E. LAKE MAINTENANCE EASEMENT
- L.M.A.E. LAKE MAINTENANCE ACCESS EASEMENT
- L.S. LICENSED SURVEYOR
- L.W.D.D. LAKE WORTH DRAINAGE DISTRICT
- MON. MONUMENT
- O.R.B. OFFICIAL RECORDS BOOK
- N.R. NON-RADIAL
- P.B. PLAT BOOK
- P.B.C. PALM BEACH COUNTY
- P.B.C.R. PALM BEACH COUNTY RECORDS
- P.G. PAGE
- P.C.P. PERMANENT CONTROL POINT
- P.O.B. POINT OF BEGINNING
- P.O.C. POINT OF COMMENCEMENT
- P.R.M. PERMANENT REFERENCE MONUMENT
- P.S.M. PROFESSIONAL SURVEYOR & MAPPER
- P.U.D. PLANNED UNIT DEVELOPMENT
- R. RADIUS
- R.E.E. ROOF ENCROACHMENT EASEMENT
- R.P.B. ROAD PLAT BOOK
- R.W. RIGHT-OF-WAY
- SEC. SECTION
- S.F. SQUARE FEET
- U.E. UTILITY EASEMENT



SEE SHEET 2 OF 3

MATCH LINE