

# IBIS GOLF AND COUNTRY CLUB PLAT No.35

PLANNED UNIT DEVELOPMENT

BEING A REPLAT OF A PORTION OF TRACT B, IBIS GOLF AND COUNTRY CLUB PLAT No.1, RECORDED IN PLAT BOOK 66, PAGE 58;  
 A PORTION OF TRACTS A, B, C, D, and E, IBIS GOLF AND COUNTRY CLUB PLAT No.7, RECORDED IN PLAT BOOK 67, PAGE 152;  
 A PORTION OF TRACTS A and B, and ALL OF LAKES 3, 4, 5, 6, 7, 8-9, 10-13, 11, 14, 15, 16-19, 17, and 17A,  
 IBIS GOLF AND COUNTRY CLUB PLAT No.14, RECORDED IN PLAT BOOK 75, PAGE 107;  
 A PORTION OF TRACT W, IBIS GOLF AND COUNTRY CLUB PLAT No.25, RECORDED IN PLAT BOOK 88, PAGE 100;  
 A PORTION OF SANDHILL WAY SOUTH, SANDHILL WAY SOUTH AT IBIS, RECORDED IN PLAT BOOK 81, PAGE 1;  
 TRACT GC, IBIS GOLF AND COUNTRY CLUB PLAT No.27, RECORDED IN PLAT BOOK 88, PAGE 178;  
 TRACTS GC, GC1, GC2, GC3 and W, IBIS GOLF AND COUNTRY CLUB PLAT No.28, RECORDED IN PLAT BOOK 90, PAGE 194;  
 TRACTS GC, GC1, W and W-1, IBIS GOLF AND COUNTRY CLUB PLAT No.29, RECORDED IN PLAT BOOK 97, PAGE 25;  
 TRACTS GC, W and W-2, IBIS GOLF AND COUNTRY CLUB PLAT No.30, RECORDED IN PLAT BOOK 99, PAGE 194;  
 TRACTS GC, GC1, W, W-1 and W-2, IBIS GOLF AND COUNTRY CLUB PLAT No.31, RECORDED IN PLAT BOOK 94, PAGE 103;  
 TRACT GC, IBIS GOLF AND COUNTRY CLUB PLAT No.32, PLAT BOOK 96, PAGE 186; and TRACT GC, IBIS GOLF AND COUNTRY  
 CLUB PLAT No.34, PLAT BOOK 100, PAGE 175, ALL RECORDED IN THE PUBLIC RECORDS OF PALM BEACH COUNTY, FLORIDA  
 LYING IN SECTIONS 13, 24, 25, and 36, TOWNSHIP 42 SOUTH, RANGE 41 EAST, CITY OF WEST PALM BEACH, PALM BEACH COUNTY, FLORIDA

THIS INSTRUMENT PREPARED BY  
 JOHN E. PHILLIPS III, P.S.M. 4826,

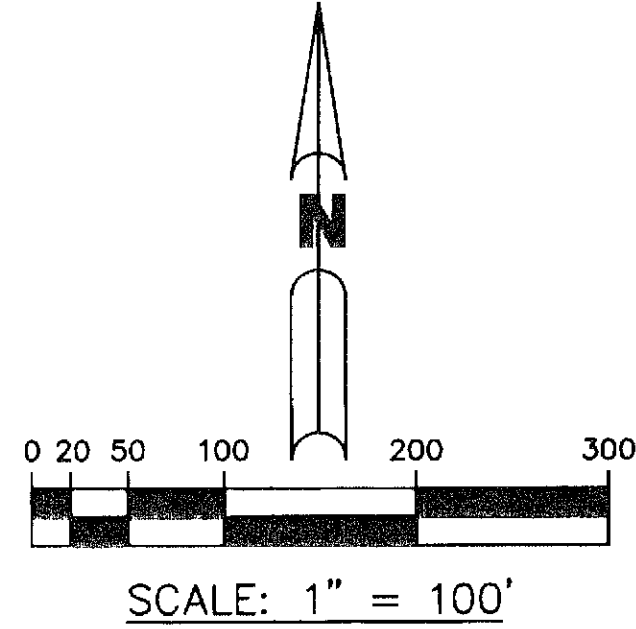
**EB BROWN & PHILLIPS, INC.**

CERTIFICATE OF AUTHORIZATION LB-6473  
 901 NORTHPOINT PARKWAY, SUITE 119  
 WEST PALM BEACH, FLORIDA 33407

NOTICE:  
 THIS PLAT, AS RECORDED IN ITS GRAPHIC FORM, IS THE  
 OFFICIAL DEPICTION OF THE SUBDIVIDED LANDS DESCRIBED  
 HEREIN AND WILL IN NO CIRCUMSTANCES BE SUPPLANTED  
 IN AUTHORITY BY ANY OTHER GRAPHIC OR DIGITAL FORM  
 OF THE PLAT.

THERE MAY BE ADDITIONAL RESTRICTIONS THAT ARE NOT  
 RECORDED ON THIS PLAT THAT MAY BE FOUND IN THE  
 PUBLIC RECORDS OF THIS COUNTY.

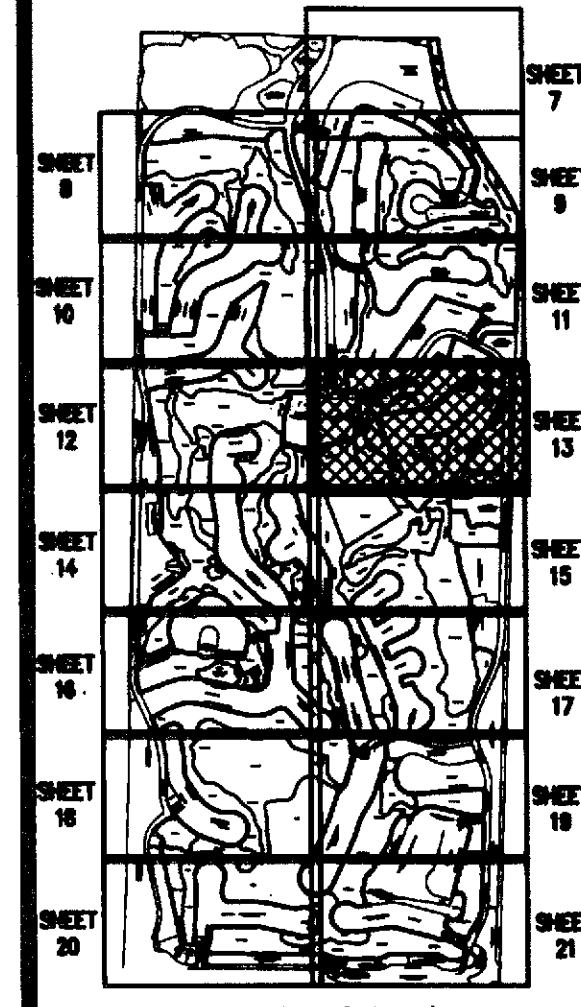
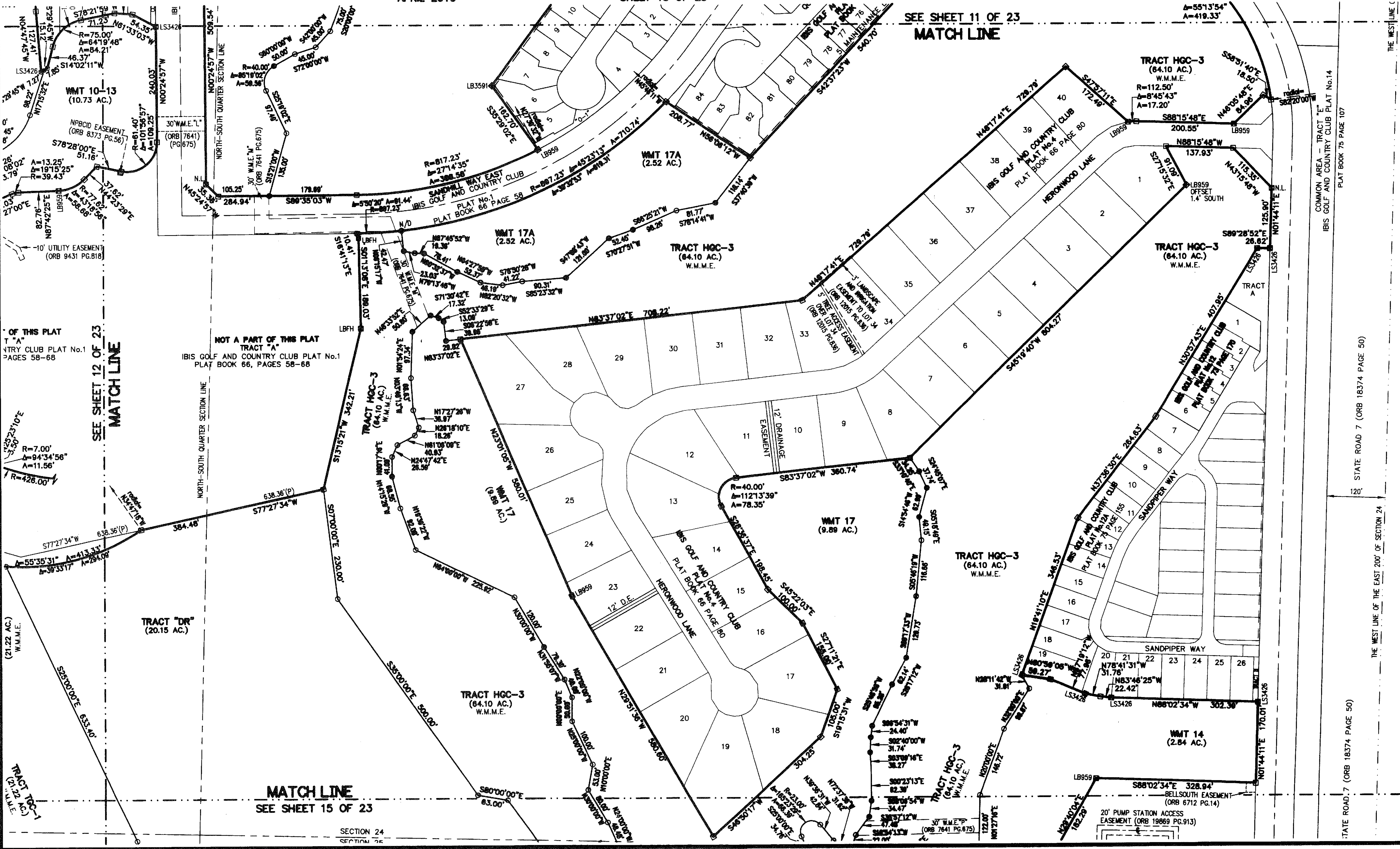
# 129



APRIL 2010

SHEET 13 OF 23

SEE SHEET 11 OF 23  
**MATCH LINE**



**KEY MAP**  
 NOT TO SCALE

OF THIS PLAT  
 NTRY CLUB PLAT No.1  
 PAGES 58-68

SEE SHEET 12 OF 23  
**MATCH LINE**

NOT A PART OF THIS PLAT  
 TRACT "A"  
 IBIS GOLF AND COUNTRY CLUB PLAT No.1  
 PLAT BOOK 66, PAGES 58-68

**MATCH LINE**  
 SEE SHEET 15 OF 23

STATE ROAD 7 (ORB 18374 PAGE 50)

THE WEST LINE OF THE EAST 200' OF SECTION 24

STATE ROAD 7 (ORB 18374 PAGE 50)