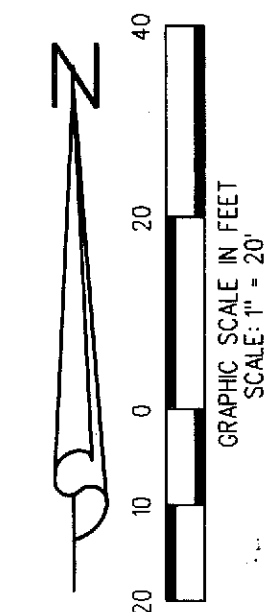
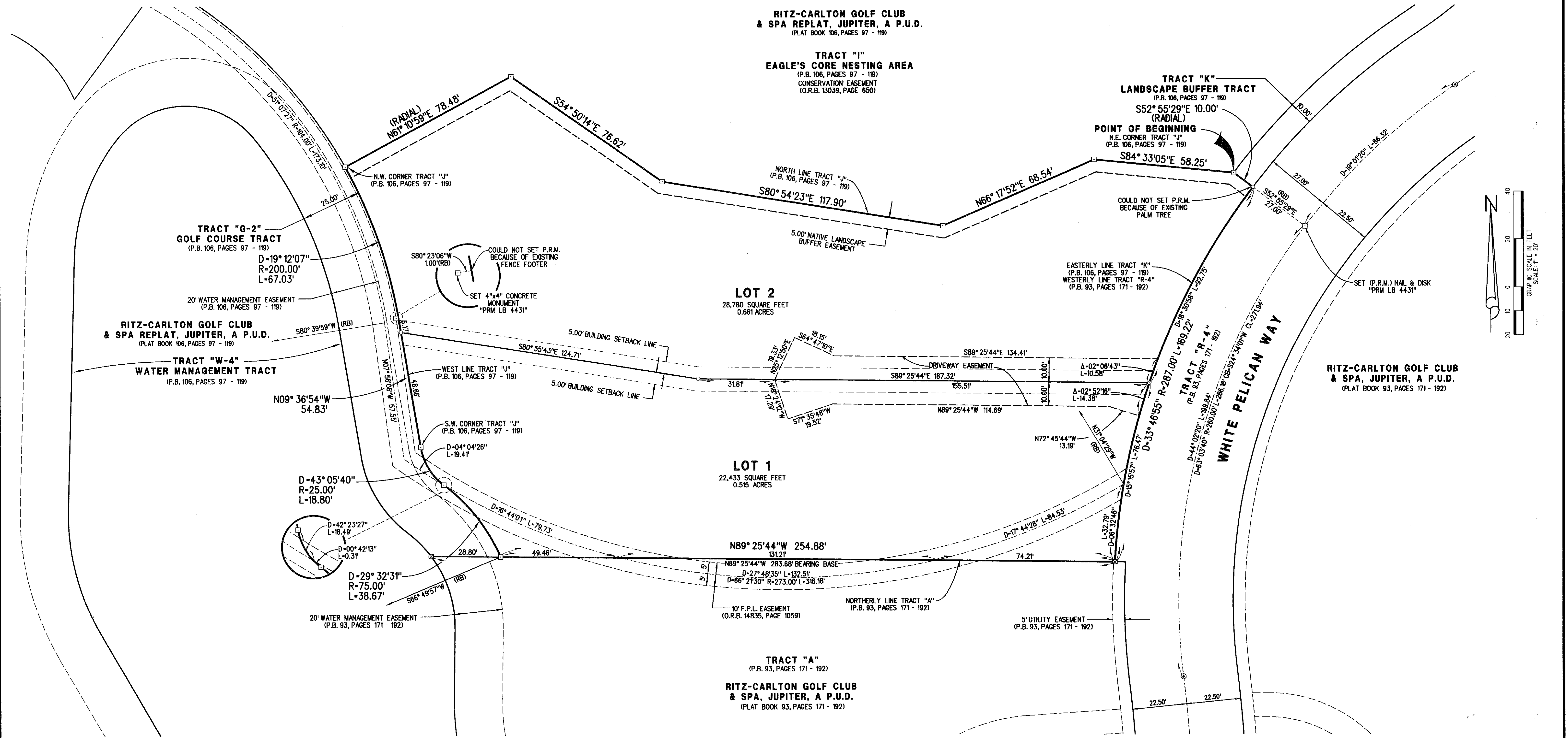


RITZ-CARLTON GOLF CLUB & SPA REPLAT NO. 2, JUPITER, A P.U.D.

150

BEING A REPLAT OF ALL OF TRACT "J" AND A PORTION OF TRACTS "G-2"
AND "K" OF THE RITZ-CARLTON GOLF CLUB & SPA REPLAT, JUPITER, A P.U.D.,
AS RECORDED IN PLAT BOOK 106, PAGES 97 THROUGH 119,
PUBLIC RECORDS OF PALM BEACH COUNTY FLORIDA.
LYING IN SECTION 19, TOWNSHIP 41 SOUTH, RANGE 43 EAST,
TOWN OF JUPITER, PALM BEACH COUNTY, FLORIDA
JUNE, 2010
SHEET 2 OF 2



				CAD: K:\JUST \ 194143 \ RITZ \ 08-072A-306 \ 08-072A-306.DGN			
				REF.		JOB: 08-072A-306	
FLD. J.P.		FB. PG.		DATE: 04/01/10			
OFF. R.J.W.				DWG. D08-072P			
CKD. D.C.L.		SHEET 2 OF 2					

LIDBERG LAND SURVEYING, INC.
 675 West Indiantown Road, Suite 200,
 Jupiter, Florida 33458 TEL. 561-746-8454
 LB4431