

# BLUE LAKE TOWNHOMES

A REPLAT OF ALL OF BLUE LAKE RESIDENTIAL, RECORDED IN PLAT BOOK 109,  
PAGES 135 THROUGH 144, OF THE PUBLIC RECORDS OF PALM BEACH COUNTY, FLORIDA  
LYING IN SECTION 12, TOWNSHIP 47 SOUTH, RANGE 42 EAST  
CITY OF BOCA RATON, PALM BEACH COUNTY, FLORIDA.  
(FEBRUARY, 2010)

RECORD PLAT PREPARED BY:



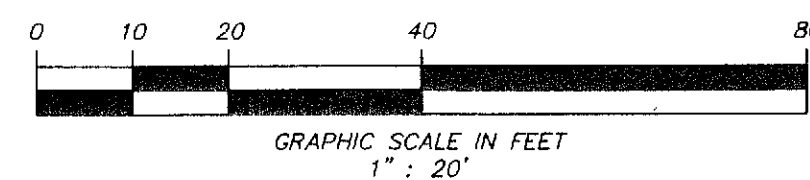
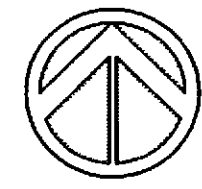
Sun-Tech Engineering, Inc.  
Engineers - Planners - Surveyors  
Certificate of Authorization Number LB 7019

1600 West Oakland Park Boulevard  
Ft. Lauderdale, FL 33311  
E-Mail: suntech@suntech.com

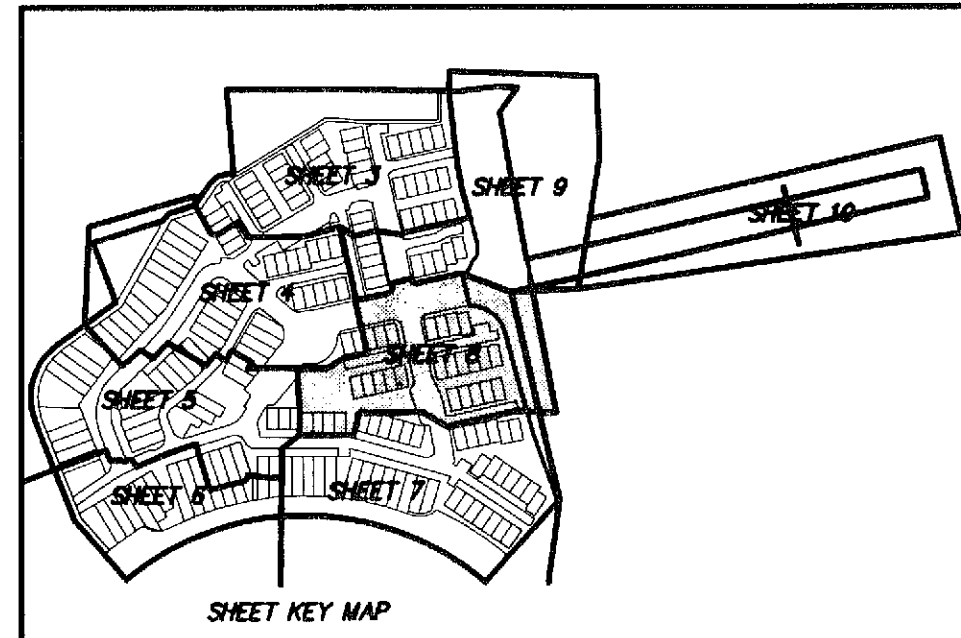
Phone (954) 777-3123  
Fax (954) 777-3114

STATE OF FLORIDA }  
COUNTY OF PALM BEACH } SS  
THIS PLAT WAS FILED FOR RECORD  
AT \_\_\_\_\_ THIS \_\_\_\_\_  
DAY OF \_\_\_\_\_ 201\_, AND DULY  
RECORDED IN PLAT BOOK \_\_\_\_\_  
ON PAGES \_\_\_\_\_ THROUGH \_\_\_\_\_

SHARON BOCK  
CLERK & COMPTROLLER  
BY: \_\_\_\_\_



- LEGEND:**
- P.B.C.R. PALM BEACH COUNTY RECORDS
  - O.R.B. OFFICIAL RECORDS BOOK
  - C CENTERLINE
  - F.R.M. PERMANENT REFERENCE MONUMENT (AS NOTED)
  - No. NUMBER
  - P.B. PLAT BOOK
  - S.F. SQUARE FEET
  - L.B. LICENSED BUSINESS
  - R/W RIGHT OF WAY
  - F.D.O.T. FLORIDA DEPARTMENT OF TRANSPORTATION
  - O/S OFFSET
  - U.E. UTILITY EASEMENT
  - I.D. IDENTIFICATION
  - P.C. POINT OF CURVATURE
  - P.D. FOUND
  - I.P. IRON PIPE
  - I.R. IRON ROD
  - C.B. CHORD BEARING
  - C.D. CHORD DISTANCE
  - R RADIUS
  - Δ DELTA OR CENTRAL ANGLE
  - L ARC LENGTH
  - PCP PERMANENT CONTROL POINT



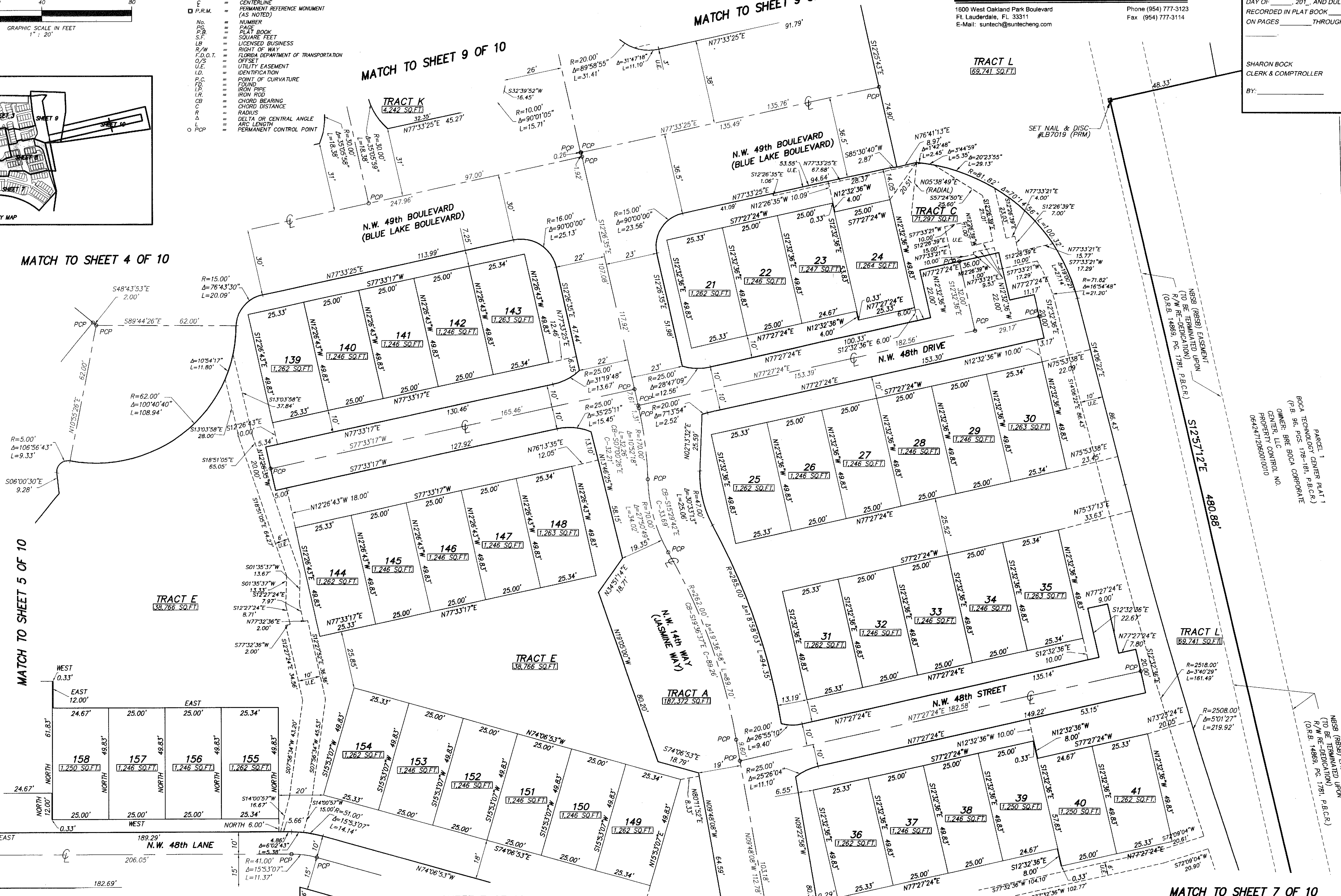
MATCH TO SHEET 9 OF 10

MATCH TO SHEET 4 OF 10

MATCH TO SHEET 5 OF 10

MATCH TO SHEET 7 OF 10

MATCH TO SHEET 7 OF 10



EAST LINE N.W. 1/4 SECTION 12-47-42

PARCEL 1  
BOCA TECHNOLOGY CENTER, PLAT 1  
(P.B. 96, P.C. 178-181, P.B.C.R.)  
OWNER: BCE BOCA CORPORATE  
PROPERTY CONTROL NO.  
06424712060010010

PARCEL 2  
NBS9 (BBSB) EASEMENT  
(TO BE TERMINATED UPON  
R/W RE-DEDICATION) P.B.C.R.)  
(O.R.B. 14869, PG. 178)

PARCEL 3  
NBS9 (BBSB) EASEMENT  
(TO BE TERMINATED UPON  
R/W RE-DEDICATION) P.B.C.R.)  
(O.R.B. 14869, PG. 178)