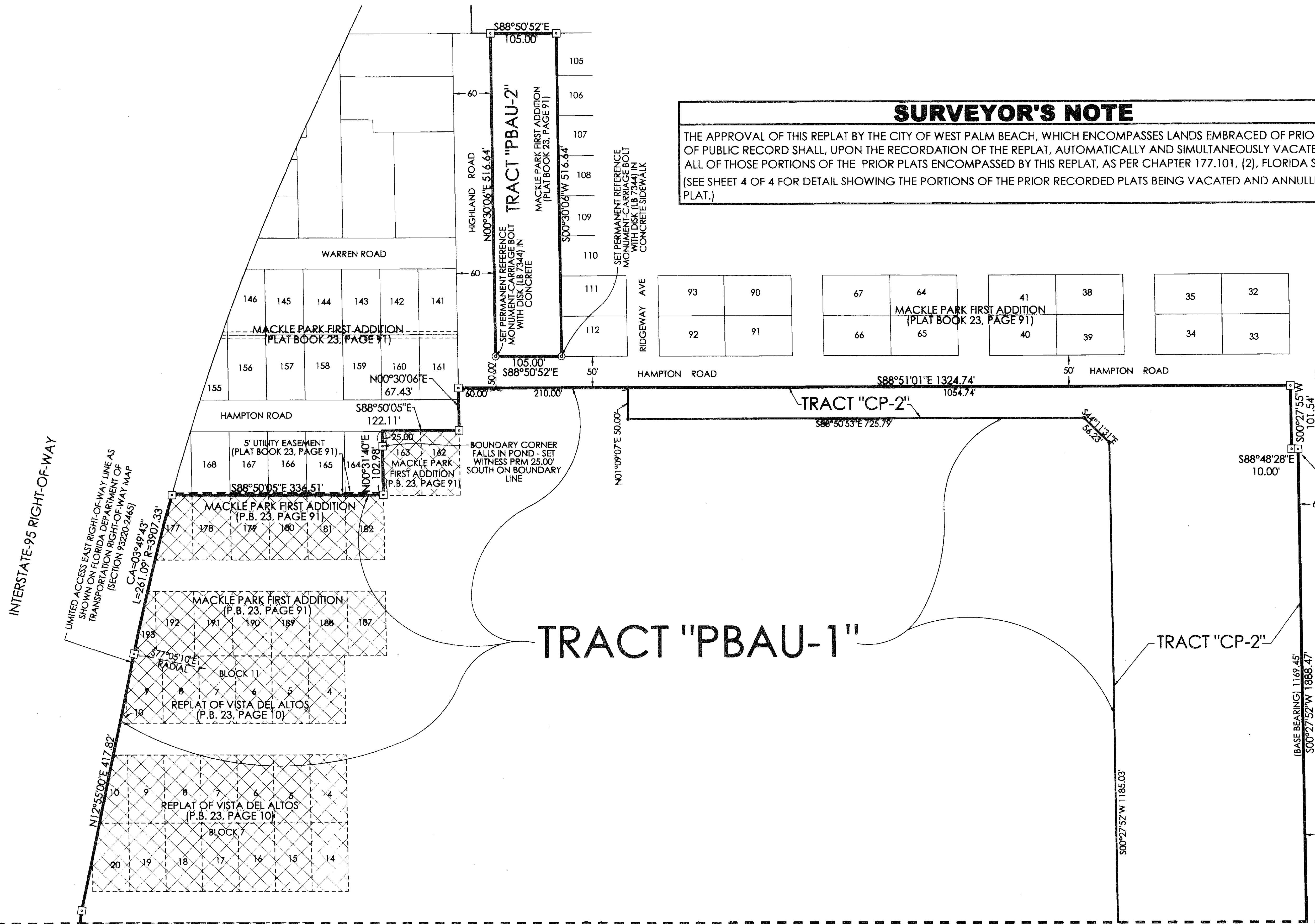
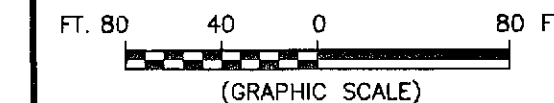


BEING A REPLAT OF PORTIONS OF THE PLATS OF "VEDADO", "HILL CREST", "RIDGWOOD PARK FIRST ADDITION", "VISTA DEL ALTOS", "REPLAT OF VISTA DEL ALTOS" AND "MACKLE PARK FIRST ADDITION", ACCORDING TO THE PLATS THEREOF, AS RECORDED IN PLAT BOOK 11, PAGE 21, PLAT BOOK 12, PAGE 9, PLAT BOOK 13, PAGE 43, PLAT BOOK 14, PAGE 41, PLAT BOOK 23, PAGE 10 AND PLAT BOOK 23, PAGE 91, RESPECTIVELY, PUBLIC RECORDS, PALM BEACH COUNTY, FLORIDA, AND LYING IN SECTION 33, TOWNSHIP 43 SOUTH, RANGE 43 EAST, CITY OF WEST PALM BEACH, PALM BEACH COUNTY, FLORIDA



SURVEYOR'S NOTE
THE APPROVAL OF THIS REPLAT BY THE CITY OF WEST PALM BEACH, WHICH ENCOMPASSES LANDS EMBRACED OF PRIOR PLATS FILED OF PUBLIC RECORD SHALL, UPON THE RECORDATION OF THE REPLAT, AUTOMATICALLY AND SIMULTANEOUSLY VACATE AND ANNUL ALL OF THOSE PORTIONS OF THE PRIOR PLATS ENCOMPASSED BY THIS REPLAT, AS PER CHAPTER 177.101, (2), FLORIDA STATUTES. (SEE SHEET 4 OF 4 FOR DETAIL SHOWING THE PORTIONS OF THE PRIOR RECORDED PLATS BEING VACATED AND ANNULLED BY THIS PLAT.)

TRACT "PBAU-1"

FOR MATCH SEE SHEET 3 OF 4

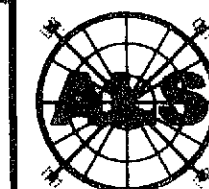
- MACKLE PARK (PLAT BOOK 18, PAGE 56)
- MACKLE PARK (PLAT BOOK 18, PAGE 56)
- POINT OF BEGINNING
- RIDGEWOOD AVENUE
- MACKLE PARK (PLAT BOOK 18, PAGE 56)
- WILLFRED PARK (PLAT BOOK 23, PAGE 93)
- AVENIDA HERMOSA
- WILLFRED PARK (PLAT BOOK 23, PAGE 93)
- WILLFRED PARK (PLAT BOOK 23, PAGE 93)
- EL PRADO

LEGEND

CA	CENTRAL ANGLE	LSE	LIFT STATION EASEMENT	□	DENOTES A SET PERMANENT REFERENCE MONUMENT 4"x4" CONCRETE MONUMENT WITH DISK (LB 7344)
CHD	CHORD DISTANCE	ORB	OFFICIAL RECORDS BOOK	⊙	DENOTES A SET PERMANENT REFERENCE MONUMENT CARRIAGE BOLT WITH DISK (LB 7344)
C/L	CENTERLINE	P.B.	PLAT BOOK	■	DENOTES A FOUND 2"x2" CONCRETE MONUMENT (UNNUMBERED)
DE	PRIVATE DRAINAGE EASEMENT	(R)	DENOTES A RADIAL LINE	⊗	DENOTES A PERPETUAL EASEMENT (OFFICIAL RECORDS BOOK 10804, PAGE 769)
L	ARC LENGTH DISTANCE	R	RADIUS DISTANCE		
LCB	LONG CHORD BEARING	UE	UTILITY EASEMENT		

SURVEYOR'S NOTES

1. THE BASE BEARING FOR THIS PLAT IS THE BEARING OF SOUTH 00°27'52" WEST, ALONG THE WEST RIGHT-OF-WAY LINE OF PARKER AVENUE, AS SHOWN HEREON.
2. IN THOSE INSTANCES WHERE UTILITY OR DRAINAGE STRUCTURES ARE CONSTRUCTED IN CONFLICT WITH THE PLATTED PERMANENT CONTROL POINT POSITION STRADDLERS MONUMENTED AS PERMANENT CONTROL POINTS WILL BE SET TO REFERENCE THE PLATTED POSITION.
3. LINES THAT INTERSECT CURVES ARE RADIAL UNLESS OTHERWISE NOTED.
4. THIS INSTRUMENT WAS PREPARED BY STEPHEN L. SHIRLEY, PROFESSIONAL SURVEYOR AND MAPPER NO. 3918, IN AND FOR THE OFFICES OF ASSOCIATED LAND SURVEYORS, INC., 4152 WEST BLUE HERON BOULEVARD, SUITE 121, RIVIERA BEACH, FLORIDA, 33404



ASSOCIATED LAND SURVEYORS, INC.
4152 W. BLUE HERON BOULEVARD—SUITE 121
RIVIERA BEACH FLORIDA 33404 LB 7344
PHONE: (561) 848-2102 FAX: (561) 844-9659 EMAIL: als@alsurvey.net

FILE: PBAU-PLAT	
FB:	WO.NO.: P251
SCALE: 1"=80'	DATE: 9-1-2010
DWN: KVC	SHEET 2 OF 4