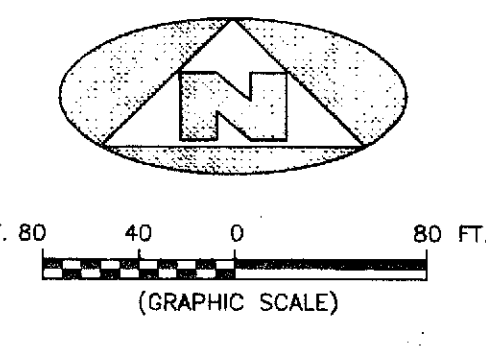


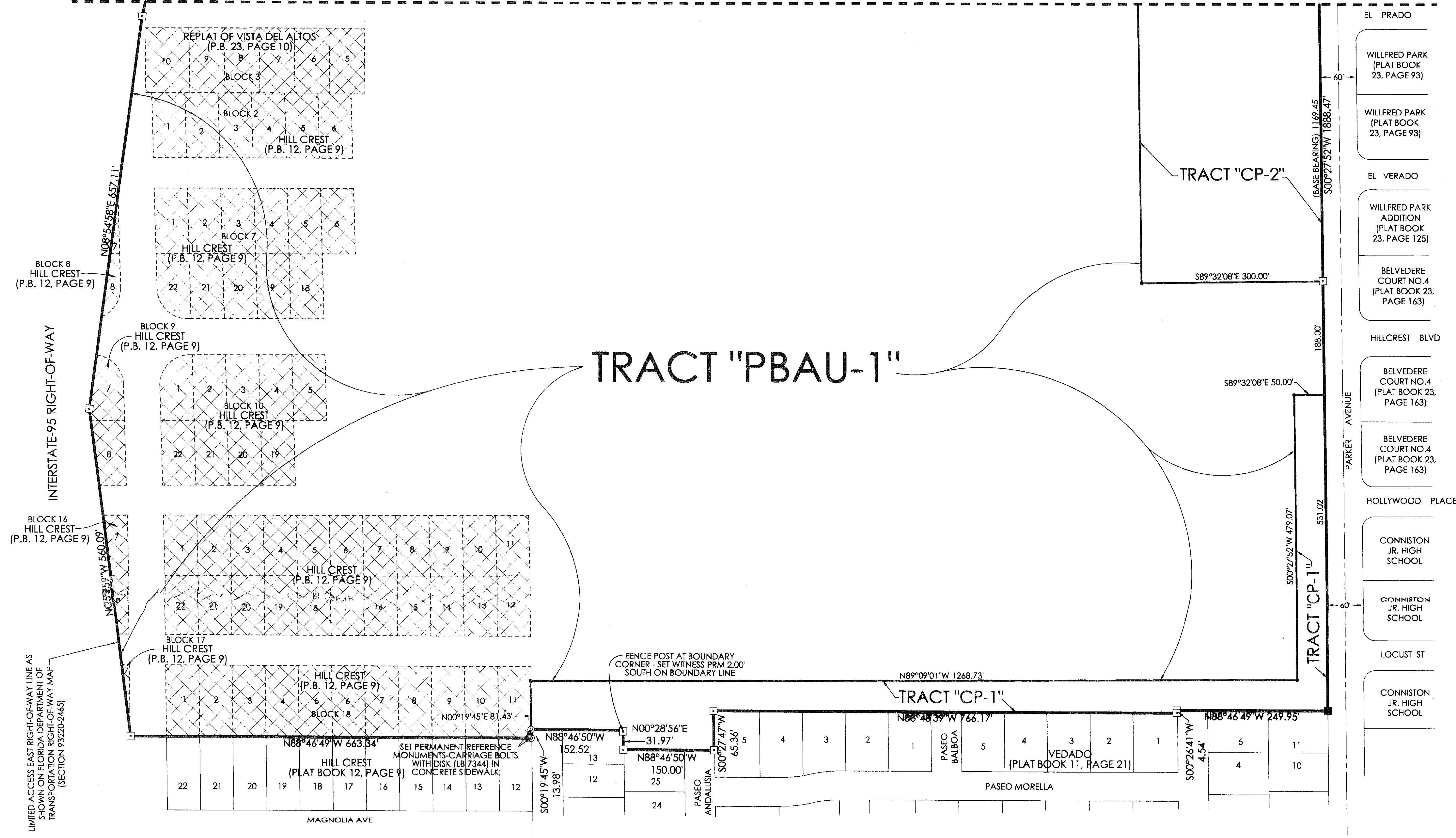
BEING A REPLAT OF PORTIONS OF THE PLATS OF "VEDADO", "HILL CREST", "RIDGEWOOD PARK FIRST ADDITION", "VISTA DEL ALTOS", "REPLAT OF VISTA DEL ALTOS" AND "MACKLE PARK FIRST ADDITION", ACCORDING TO THE PLATS THEREOF, AS RECORDED IN PLAT BOOK 11, PAGE 21, PLAT BOOK 12, PAGE 9, PLAT BOOK 13, PAGE 43, PLAT BOOK 14, PAGE 41, PLAT BOOK 23, PAGE 10 AND PLAT BOOK 23, PAGE 91, RESPECTIVELY, PUBLIC RECORDS, PALM BEACH COUNTY, FLORIDA, AND LYING IN SECTION 33, TOWNSHIP 43 SOUTH, RANGE 43 EAST, CITY OF WEST PALM BEACH, PALM BEACH COUNTY, FLORIDA



SURVEYOR'S NOTE

THE APPROVAL OF THIS REPLAT BY THE CITY OF WEST PALM BEACH, WHICH ENCOMPASSES LANDS EMBRACED OF PRIOR PLATS FILED OF PUBLIC RECORD SHALL, UPON THE RECORDATION OF THE REPLAT, AUTOMATICALLY AND SIMULTANEOUSLY VACATE AND ANNUL ALL OF THOSE PORTIONS OF THE PRIOR PLATS ENCOMPASSED BY THIS REPLAT, AS PER CHAPTER 177.101, (2), FLORIDA STATUTES. (SEE SHEET 4 OF 4 FOR DETAIL SHOWING THE PORTIONS OF THE PRIOR RECORDED PLATS BEING VACATED AND ANNULLED BY THIS PLAT.)

FOR MATCH SEE SHEET 2 OF 4



INTERSTATE-95 RIGHT-OF-WAY

LIMITED ACCESS EAST RIGHT-OF-WAY LINE AS SHOWN ON FLORIDA DEPARTMENT OF TRANSPORTATION RIGHT-OF-WAY MAP (SECTION 93220-2465)

TRACT "PBAU-1"

TRACT "CP-2"

TRACT "CP-1"

LEGEND

- CA CENTRAL ANGLE
- CHD CHORD DISTANCE
- C/L CENTERLINE
- DE PRIVATE DRAINAGE EASEMENT
- LSE LIFT STATION EASEMENT
- ORB OFFICIAL RECORDS BOOK
- P.B. PLAT BOOK
- (P) DENOTES A PERMANENT REFERENCE MONUMENT
- DENOTES A SET PERMANENT REFERENCE MONUMENT WITH DISK (LB 7344)
- ⊙ DENOTES A SET PERMANENT REFERENCE MONUMENT (CARRIAGE BOLT WITH DISK)

SURVEYOR'S NOTES

1. THE BASE BEARING FOR THIS PLAT IS THE BEARING OF SOUTH 00°27'52" WEST, ALONG THE WEST RIGHT-OF-WAY LINE OF PARKER AVENUE, AS SHOWN HEREON.
2. THIS INSTRUMENT WAS PREPARED BY STEPHEN L. SHIRLEY,
3. LINES THAT INTERSECT CURVES ARE RADIAL UNLESS OTHERWISE NOTED.
4. THIS INSTRUMENT WAS PREPARED BY STEPHEN L. SHIRLEY,



ASSOCIATED LAND SURVEYORS, INC. 4150 W. BLUE HERON BOULEVARD, SUITE 121