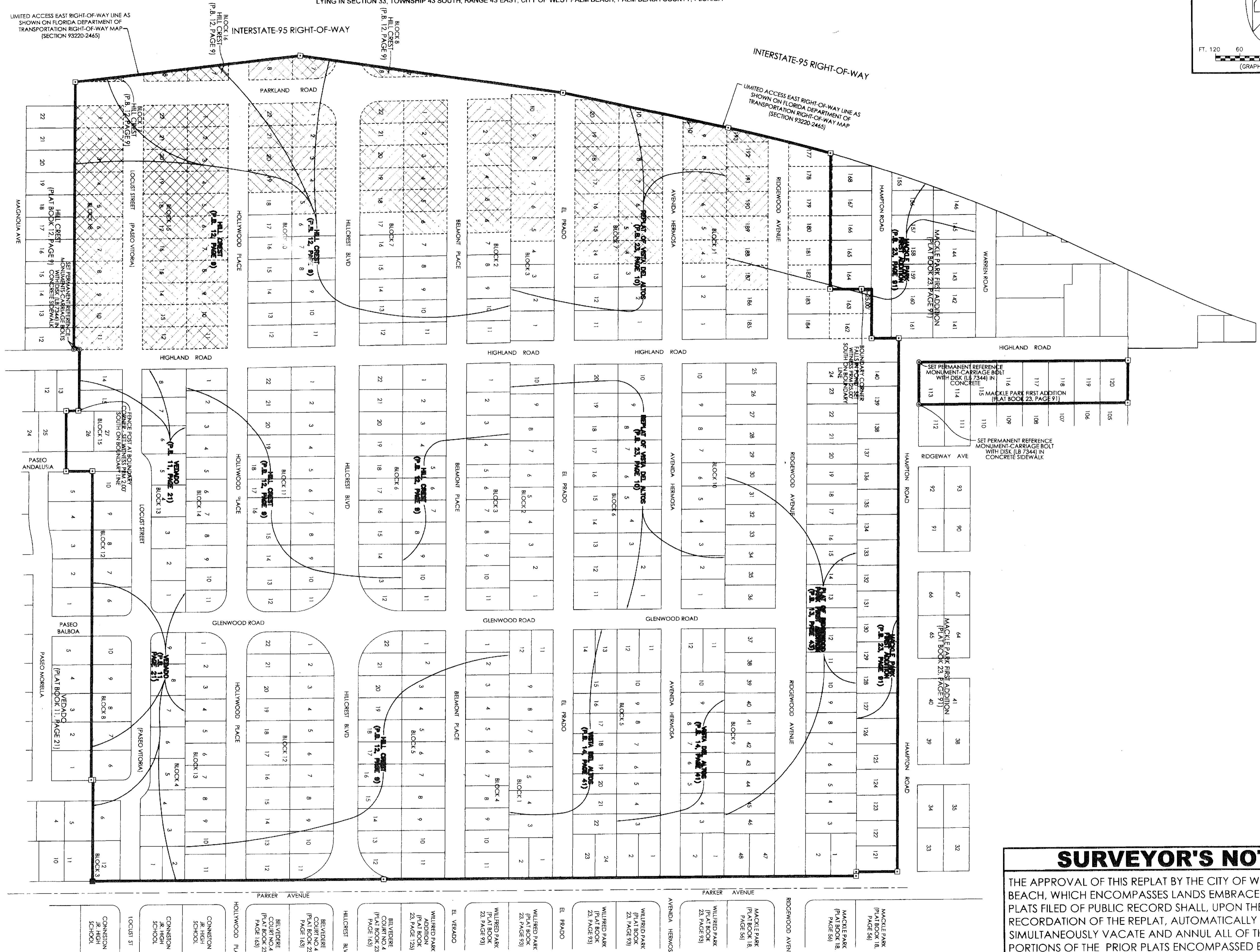
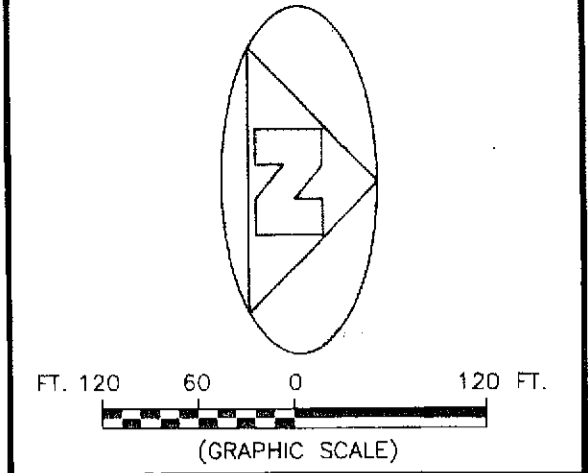


BEING A REPLAT OF PORTIONS OF THE PLATS OF "VEDADO", "HILL CREST", "RIDGWOOD PARK FIRST ADDITION", "VISTA DEL ALTOS", "REPLAT OF VISTA DEL ALTOS" AND "MACKLE PARK FIRST ADDITION", ACCORDING TO THE PLATS THEREOF, AS RECORDED IN PLAT BOOK 11, PAGE 21, PLAT BOOK 12, PAGE 9, PLAT BOOK 13, PAGE 43, PLAT BOOK 14, PAGE 41, PLAT BOOK 23, PAGE 10 AND PLAT BOOK 23, PAGE 91, RESPECTIVELY, PUBLIC RECORDS, PALM BEACH COUNTY, FLORIDA, AND LYING IN SECTION 33, TOWNSHIP 43 SOUTH, RANGE 43 EAST, CITY OF WEST PALM BEACH, PALM BEACH COUNTY, FLORIDA



**SURVEYOR'S NOTE**  
THE APPROVAL OF THIS REPLAT BY THE CITY OF WEST PALM BEACH, WHICH ENCOMPASSES LANDS EMBRACED OF PRIOR PLATS FILED OF PUBLIC RECORD SHALL, UPON THE RECORDATION OF THE REPLAT, AUTOMATICALLY AND SIMULTANEOUSLY VACATE AND ANNULL ALL OF THOSE PORTIONS OF THE PRIOR PLATS ENCOMPASSED BY THIS REPLAT, AS PER CHAPTER 177.101, (2), FLORIDA STATUTES.

DETAIL SHOWING THE PORTIONS OF THE PRIOR RECORDED PLATS BEING VACATED AND ANNULLED BY THIS PLAT.

**LEGEND**

CA	CENTRAL ANGLE	LSE	LIFT STATION EASEMENT
CHD	CHORD DISTANCE	ORB	OFFICIAL RECORDS BOOK
C/L	CENTERLINE	P/B	PLAT BOOK
DE	PRIVATE DRAINAGE EASEMENT	(R)	DENOTES A RADIAL LINE
1	ARC LENGTH DISTANCE	R	RADIUS DISTANCE
LCB	LONG CHORD BEARING	UE	UTILITY EASEMENT

- DENOTES A SET PERMANENT REFERENCE MONUMENT WITH DISK (LB 7344)
- DENOTES A SET PERMANENT REFERENCE MONUMENT CARRIAGE BOLT WITH DISK (LB 7344)
- DENOTES A FOUND 2"x2" CONCRETE MONUMENT (UNNUMBERED)
- ⊗ DENOTES A PERPETUAL EASEMENT (OFFICIAL RECORDS BOOK 10804, PAGE 769)

- SURVEYOR'S NOTES**
1. THE BASE BEARING FOR THIS PLAT IS THE BEARING OF SOUTH 00°27'52" WEST, ALONG THE WEST RIGHT-OF-WAY LINE OF PARKER AVENUE, AS SHOWN HEREON.
  2. IN THOSE INSTANCES WHERE UTILITY OR DRAINAGE STRUCTURES ARE CONSTRUCTED IN CONFLICT WITH THE PLATTED PERMANENT CONTROL POINT POSITION STRADDLERS MONUMENTED AS PERMANENT CONTROL POINTS WILL BE SET TO REFERENCE THE PLATTED POSITION.
  3. LINES THAT INTERSECT CURVES ARE RADIAL UNLESS OTHERWISE NOTED.
  4. THIS INSTRUMENT WAS PREPARED BY STEPHEN L. SHIRLEY, PROFESSIONAL SURVEYOR AND MAPPER NO. 3918, IN AND FOR THE OFFICES OF ASSOCIATED LAND SURVEYORS, INC., 4152 WEST BLUE HERON BOULEVARD, SUITE 121, RIVIERA BEACH, FLORIDA, 33404

**ASSOCIATED LAND SURVEYORS, INC.**  
4152 W. BLUE HERON BOULEVARD-SUITE 121  
RIVIERA BEACH FLORIDA 33404 LB 7344  
PHONE: (561) 848-2102 FAX: (561) 844-9659 EMAIL: als@alsurvey.net

FILE: PBAU-PLAT	
FB	WO.NO.: P251
SCALE: 1"=80'	DATE: 9-1-2010
DWN: KVC	SHEET 4 OF 4