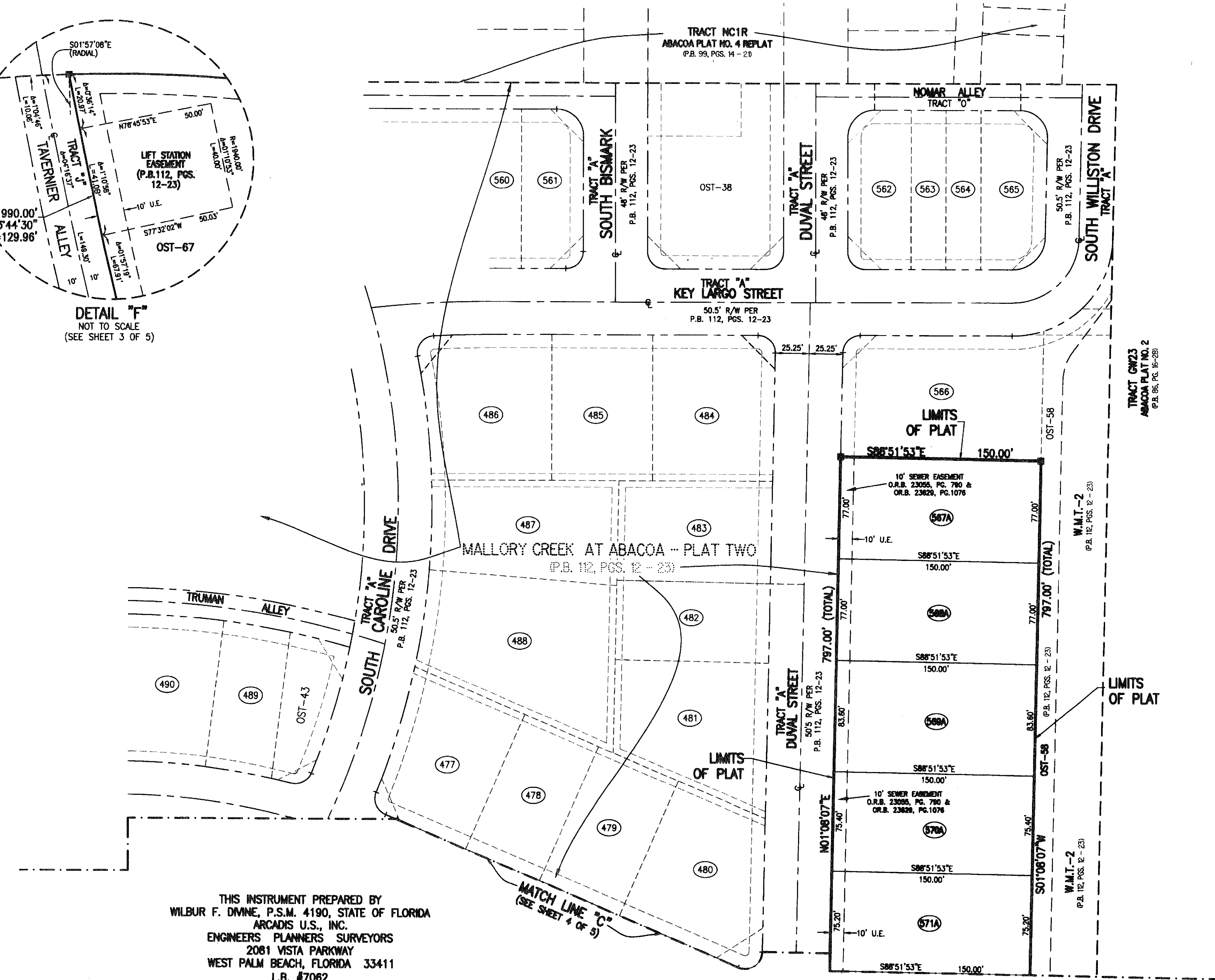
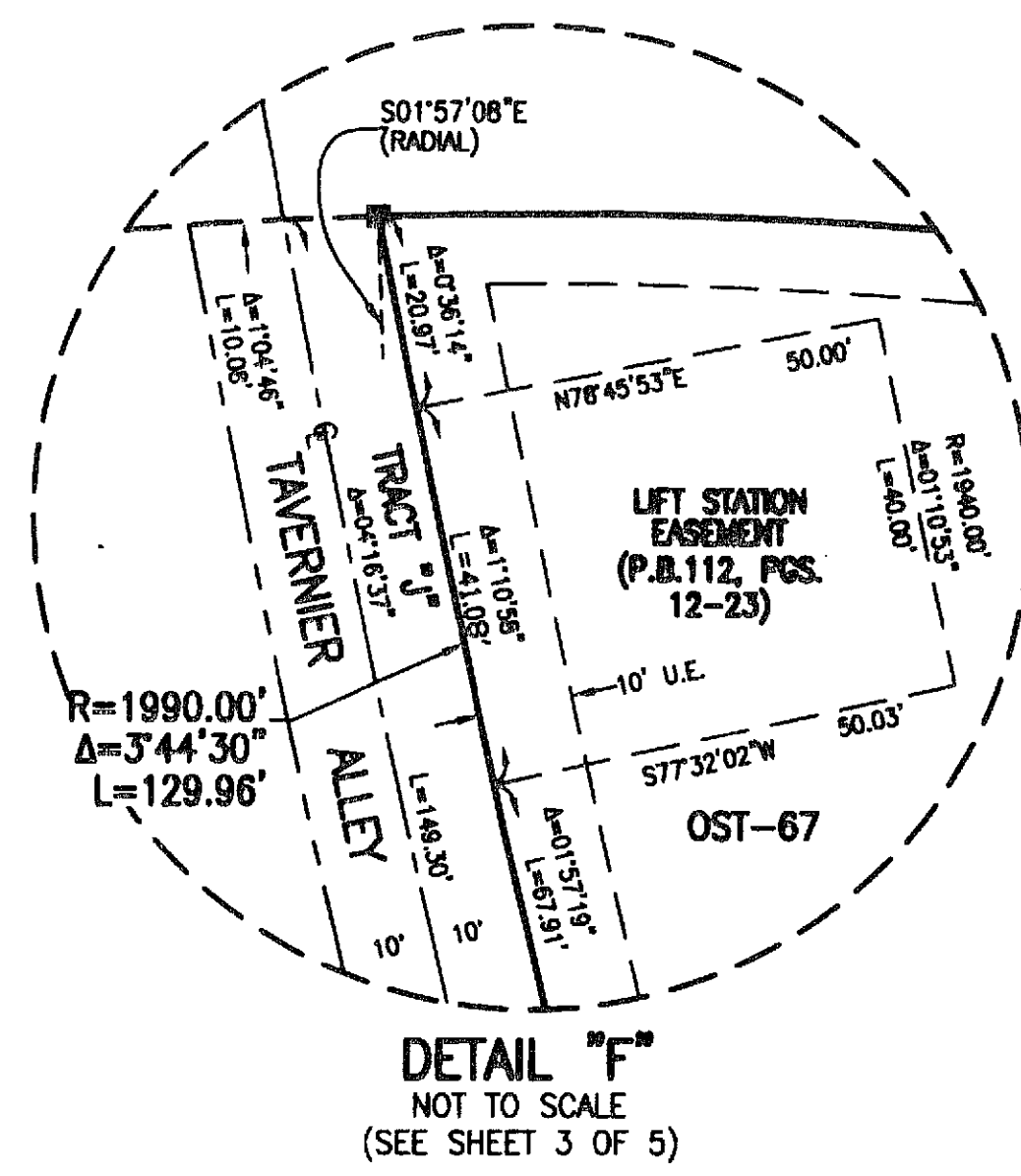
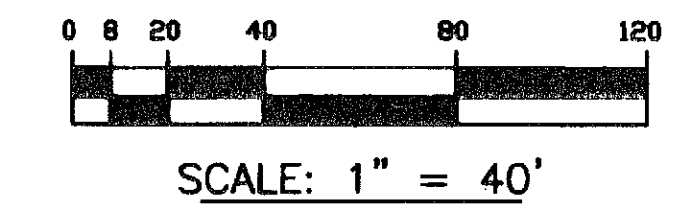


# MALLORY CREEK AT ABACOA - PLAT TWO - REPLAT NO. 2

BEING A REPLAT OF LOTS 373, 401, 421 THROUGH 423, 442 THROUGH 451, 453 THROUGH 457, 473 THROUGH 476, 567 THROUGH 588 AND TRACTS OST-45, OST-57, OST-60 AND OST-65 ACCORDING TO MALLORY CREEK AT ABACOA - PLAT TWO AS RECORDED IN PLAT BOOK 112, PAGES 12 THROUGH 23, OF THE PUBLIC RECORDS OF PALM BEACH COUNTY, FLORIDA, AND LOT 402A AND TRACT OST-47A OF MALLORY CREEK AT ABACOA - PLAT ONE - REPLAT NO. 1 ACCORDING TO THE PLAT THEREOF RECORDED IN PLAT BOOK 113, PAGES 17 THROUGH 19 ALL OF THE PUBLIC RECORDS OF PALM BEACH COUNTY, FLORIDA LYING IN SECTION 14, TOWNSHIP 41 SOUTH, RANGE 42 EAST, TOWN OF JUPITER, PALM BEACH COUNTY, FLORIDA

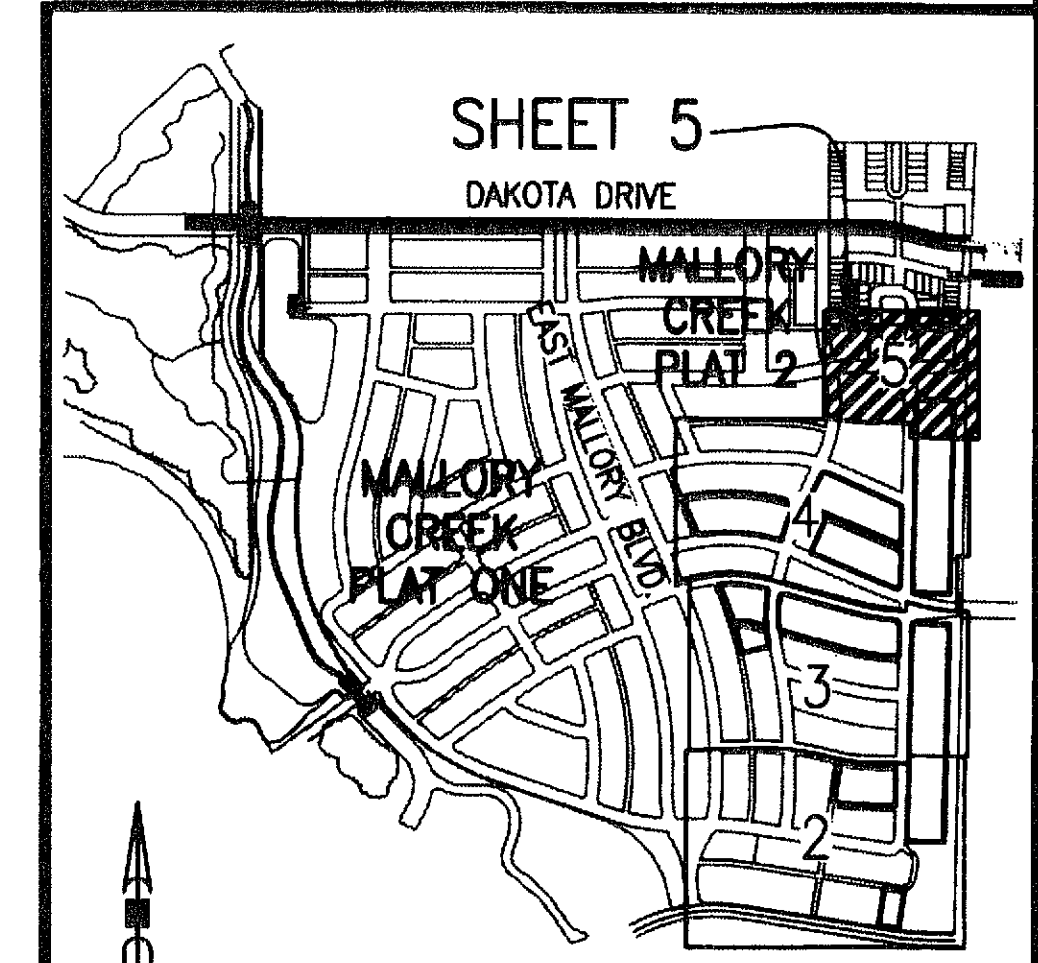
SHEET 5 OF 5 AUGUST, 2010

190



- LEGEND:**
- - SET PERMANENT REFERENCE MONUMENT, L.B. #7062
  - - FOUND PERMANENT REFERENCE MONUMENT, L.B. #7062
  - - FOUND PERMANENT CONTROL POINT, L.B. #7062
  - Δ - DELTA ANGLE
  - R - RADIUS
  - L - ARC LENGTH
  - C - CENTERLINE
  - AC - ACRES
  - BLVD - BOULEVARD
  - CB - CHORD BEARING
  - CH - CHORD DISTANCE
  - D.B. - DEED BOOK
  - D.E. - DRAINAGE EASEMENT
  - I.E. - INGRESS AND EGRESS EASEMENT
  - L.A.E. - LIMITED ACCESS EASEMENT
  - L.D.E. - LANDSCAPE EASEMENT
  - LB - LICENSED BUSINESS
  - (MS) - MEASURED
  - (N.R.) - NON-RADIAL
  - N.T.S. - NOT TO SCALE
  - O.R.B. - OFFICIAL RECORD BOOK
  - OST - OPEN SPACE TRACT
  - (P.) - PLAT
  - P.B. - PLAT BOOK
  - P.D.E. - PRIVATE DRAINAGE EASEMENT
  - PGS. - PAGES
  - P.I. - POINT OF INTERSECTION
  - P.L.S. - PROFESSIONAL LAND SURVEYOR
  - P.O.B. - POINT OF BEGINNING
  - P.O.C. - POINT OF COMMENCEMENT
  - P.R.C. - POINT OF REVERSE CURVATURE
  - P.R.M. - PERMANENT REFERENCE MONUMENT
  - P.U.E. - PRIVATE UTILITY EASEMENT
  - R3 - 3.00' UTILITY EASEMENT RADIUS
  - (RAD) - RADIAL
  - (R.F.) - RADIAL TO FRONT LOT LINE
  - (R.R.) - RADIAL TO REAR LOT LINE
  - R/W - RIGHT-OF-WAY
  - S.E. - SIDEWALK EASEMENT
  - S.S.E. - SAFE SIGHT EASEMENT
  - T.S.E. - TEMPORARY SIDEWALK EASEMENT
  - U.E. - UTILITY EASEMENT

THIS INSTRUMENT PREPARED BY  
WILBUR F. DIVINE, P.S.M. 4190, STATE OF FLORIDA  
ARCADIS U.S., INC.  
ENGINEERS PLANNERS SURVEYORS  
2081 VISTA PARKWAY  
WEST PALM BEACH, FLORIDA 33411  
L.B. #7062



NOTE - ALL LINES INTERSECTING CIRCULAR CURVES ARE RADIAL UNLESS NOTED.