

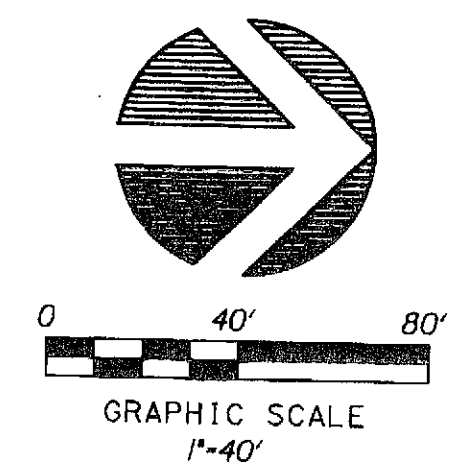


SURVEYING & MAPPING
 Certificate of Authorization No. LB7264
 Prepared by: Jeff S. Hodapp, P.S.M.
 949A Clint Moore Road
 Boca Raton, Florida 33487
 Tel: (561) 241-9888
 Fax: (561) 241-5182

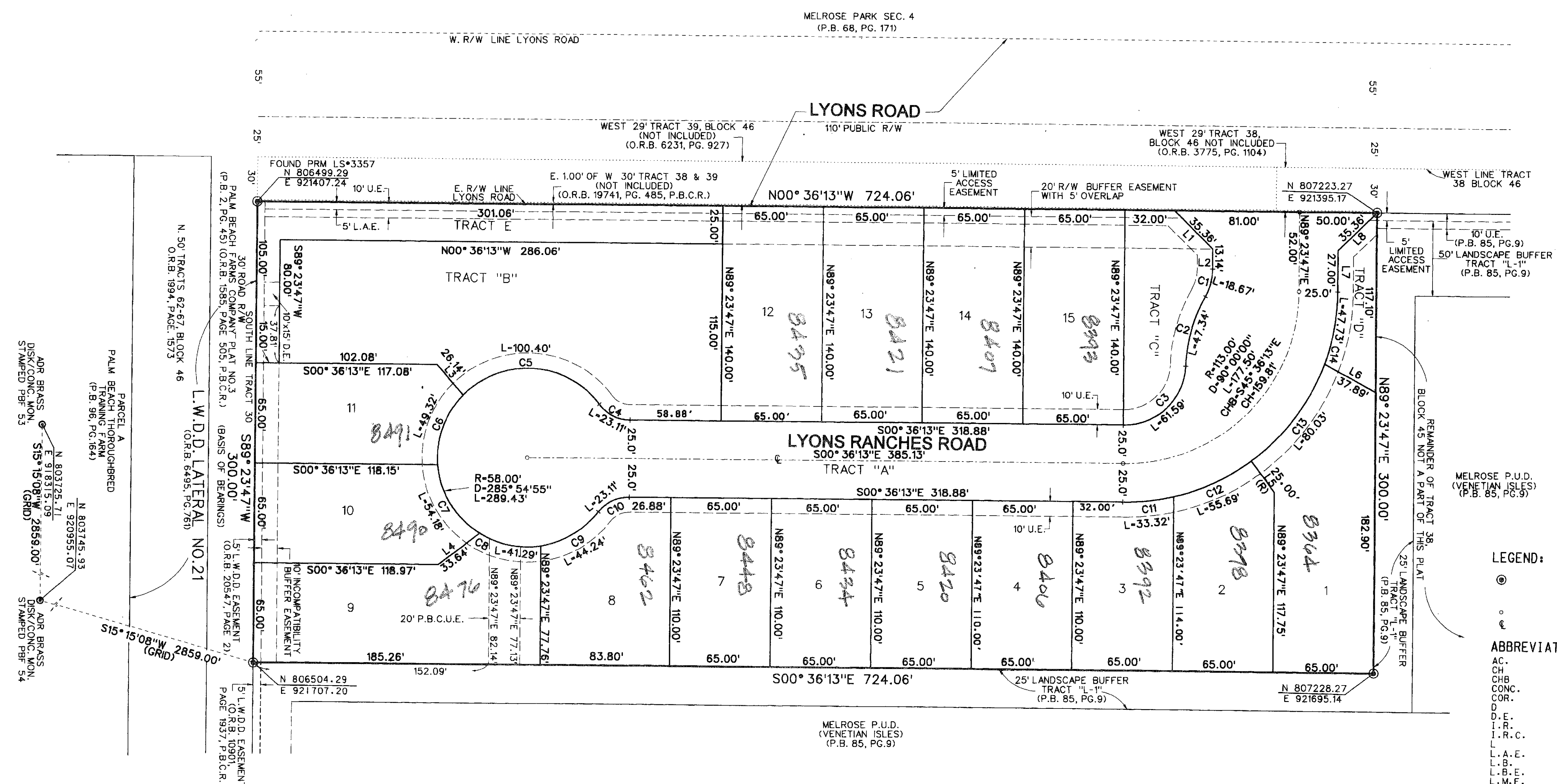
LYONS RANCHES

BEING A REPLAT OF A PORTION OF TRACTS 38 AND 39, BLOCK 46, "THE PALM BEACH FARMS CO., PLAT NO. 3", AS RECORDED IN PLAT BOOK 2, PAGE 45-54, P.B.C.R., LYING IN SECTIONS 17 AND 18, TOWNSHIP 45 SOUTH, RANGE 42 EAST, PALM BEACH COUNTY, FLORIDA.
 SEPTEMBER, 2010

4



SHEET 2 OF 2



PARCEL A
 PALM BEACH THOROUGHbred
 (P.B. 85, PG. 184)
 N 803725.71
 E 920955.07
 N 803745.93
 E 920955.07
 N 803725.71
 E 918315.09
 S 15°15'08" W 2859.00'
 (GRID)
 ADR BRASS
 DISK/CONC. MON.
 STAMPED FIRM S4

- LEGEND:**
- ⊙ SET P.R.M. (UNLESS OTHERWISE NOTED); 4" DIAMETER ALUMINUM DISK IN CONC. MON. STAMPED •LB7264
 - ⊙ CENTERLINE
- ABBREVIATIONS:**
- AC. ACRES
 - CH. CHORD BEARING
 - CHB. CONCRETE
 - CONC. CORNER
 - D. DELTA (CENTRAL ANGLE)
 - D.E. DRAINAGE EASEMENT
 - I.R. IRON ROD
 - I.R.C. IRON ROD AND CAP
 - ARCL. ARCLength
 - L.A.E. LIMITED ACCESS EASEMENT
 - L.B. LICENSED BUSINESS
 - L.B.E. LANDSCAPE BUFFER EASEMENT
 - L.M.E. LAKE MAINTENANCE EASEMENT
 - L.M.A.E. LAKE MAINTENANCE ACCESS EASEMENT
 - L.S. LICENSED SURVEYOR
 - L.S.E. LIFT STATION EASEMENT
 - L.W.D.D. LAKE WORTH DRAINAGE DISTRICT
 - MON. MONUMENT
 - O.R.B. OFFICIAL RECORDS BOOK
 - N.R. NON-RADIAL
 - P.B. PLAT BOOK
 - P.B.C.R. PALM BEACH COUNTY RECORDS
 - PG. PAGE
 - P.C.P. PERMANENT CONTROL POINT
 - P.O.B. POINT OF BEGINNING
 - P.O.C. POINT OF COMMENCEMENT
 - P.R.M. PERMANENT REFERENCE MONUMENT
 - P.S.M. PROFESSIONAL SURVEYOR & MAPPER
 - P.U.D. PLANNED UNIT DEVELOPMENT
 - R. RADIUS
 - R/W. RIGHT-OF-WAY
 - SEC. SECTION
 - S.F. SQUARE FEET
 - U.E. UTILITY EASEMENT

LINE	BEARING	DISTANCE
L1	S 44°23'47" W	35.36'
L2	N 89°23'47" E	13.14'
L3	N 48°53'36" E	26.14'
L4	N 38°16'14" W	33.64'
L5	S 52°26'19" W	25.00'
L6	S 28°18'07" W	37.89'
L7	N 89°23'47" E	27.00'
L8	N 45°36'13" W	35.36'

CURVE	ARC LENGTH	RADIUS	DELTA ANGLE	CHORD BEARING
C1	18.67'	37.00'	28°54'20"	S 76°09'03" E
C2	47.34'	100.00'	27°07'17"	N 75°15'31" W
C3	61.59'	40.00'	88°12'57"	S 44°42'41" E
C4	23.11'	25.00'	52°57'26"	S 25°52'30" W
C5	100.40'	58.00'	99°10'46"	N 02°45'50" E
C6	49.32'	58.00'	48°43'23"	N 71°11'15" W
C7	54.18'	58.00'	53°31'30"	S 57°41'19" W
C8	41.29'	58.00'	40°47'14"	S 10°31'57" W
C9	44.24'	58.00'	43°41'59"	S 31°42'40" E
C10	23.11'	25.00'	52°57'26"	N 27°04'56" W
C11	33.32'	138.00'	13°50'07"	S 07°31'16" E
C12	55.69'	138.00'	23°07'21"	S 26°00'00" E
C13	80.03'	138.00'	33°13'37"	S 54°10'30" E
C14	47.73'	138.00'	19°48'55"	S 80°41'45" E
C15	289.43'	58.00'	285°54'52"	S 89°23'47" W