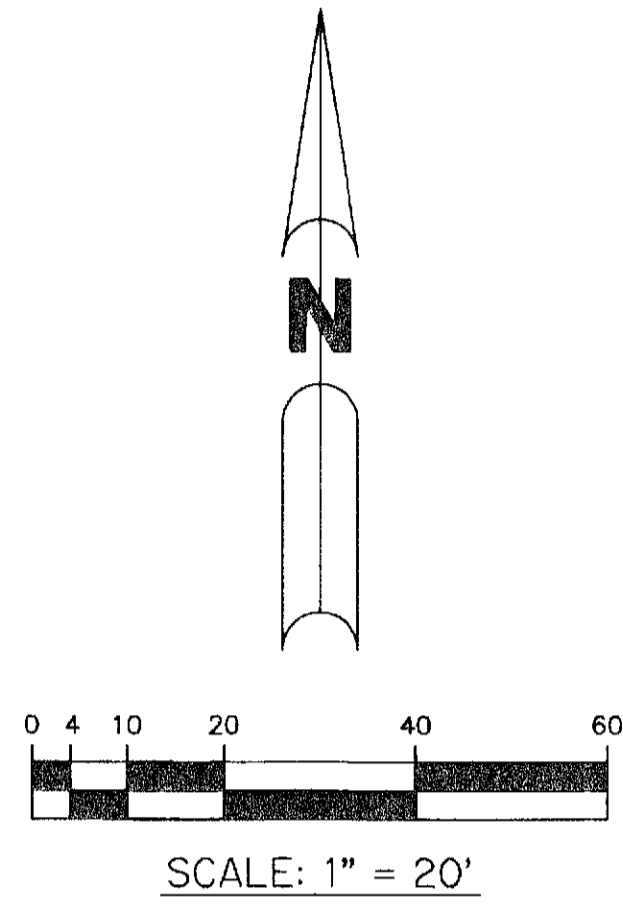


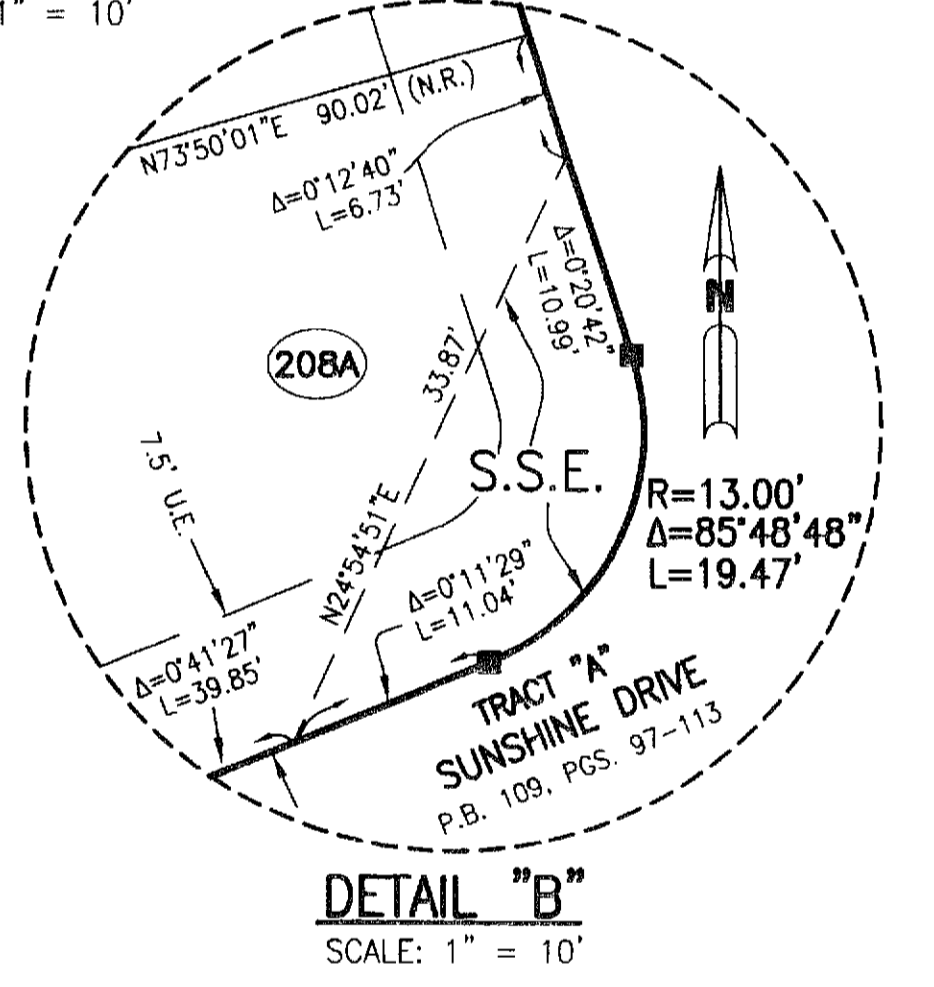
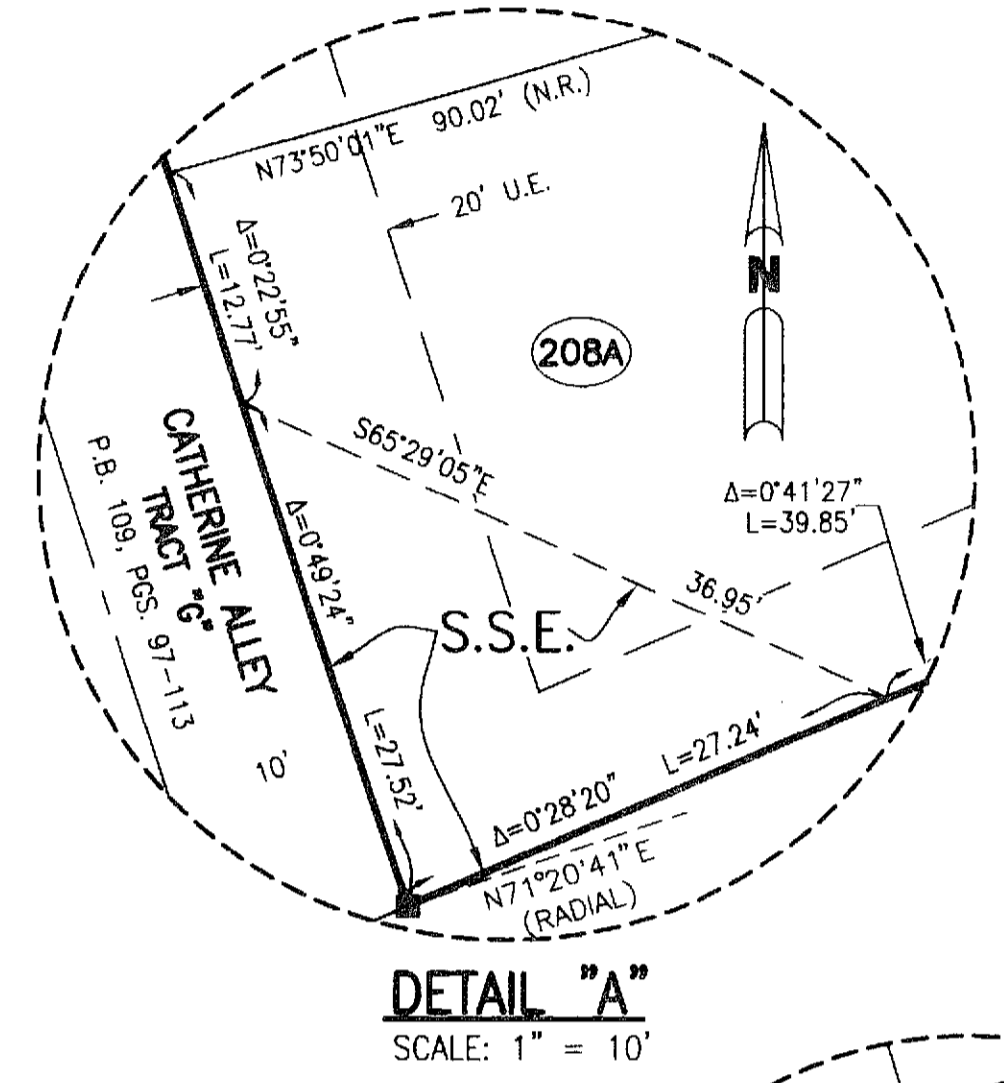
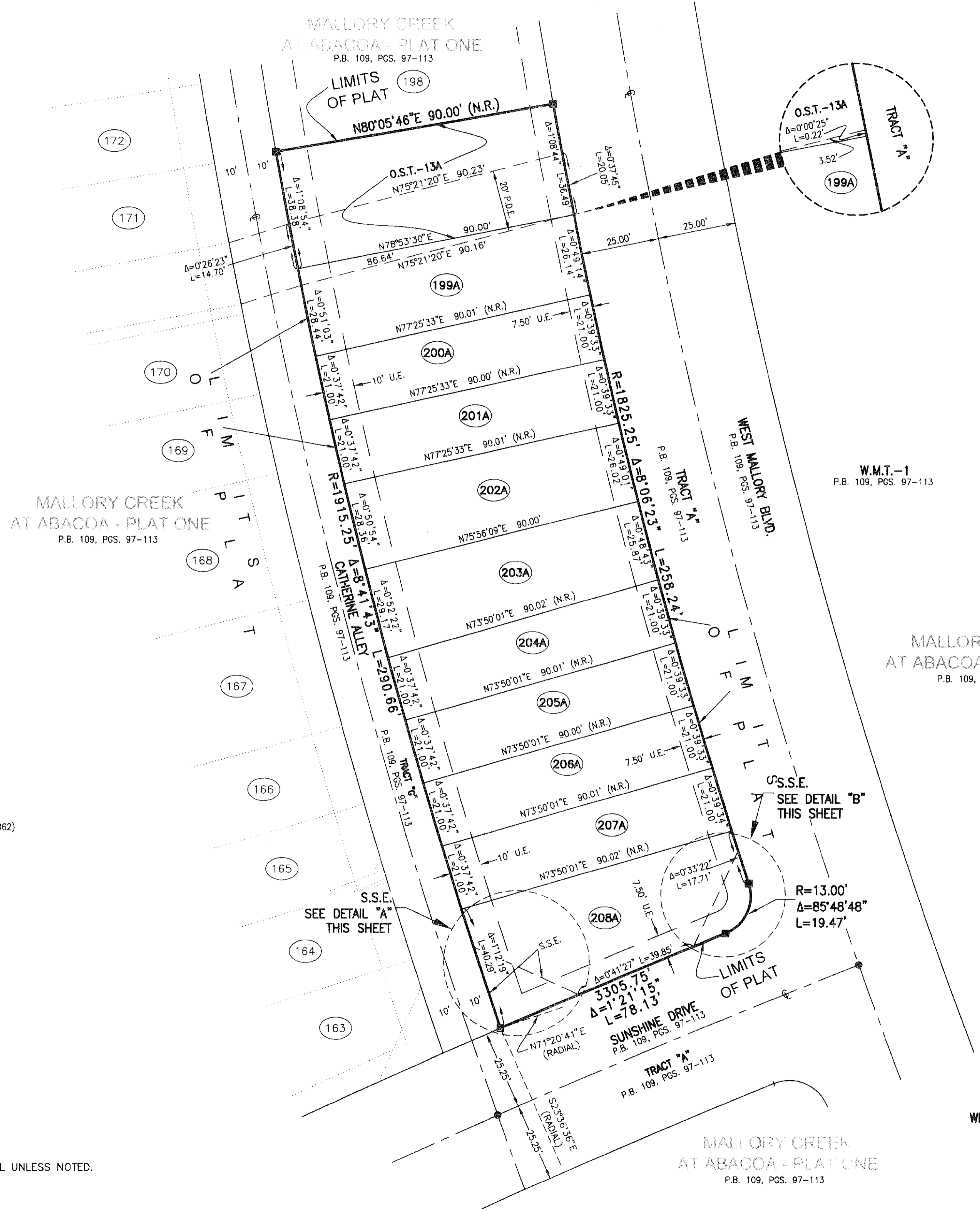
MALLORY CREEK AT ABACOA - PLAT ONE REPLAT NO. 1

BEING A REPLAT OF LOTS 199 THROUGH 208 AND TRACT OST-13 ACCORDING TO THE PLAT OF MALLORY CREEK AT ABACOA - PLAT ONE RECORDED IN PLAT BOOK 109, PAGES 97 THROUGH 113, OF THE PUBLIC RECORDS OF PALM BEACH COUNTY, FLORIDA, LYING IN SECTION 14, TOWNSHIP 41 SOUTH, RANGE 42 EAST, TOWN OF JUPITER, PALM BEACH COUNTY, FLORIDA
SHEET 2 OF 2 OCTOBER, 2010



- LEGEND:**
- R = RADIUS
 - Δ = CENTRAL ANGLE
 - L = ARC LENGTH
 - C = CENTERLINE
 - AC. = ACRES
 - LB = LICENSED BUSINESS
 - N.R. = NON RADIAL
 - O.S.T. = OPEN SPACE TRACT
 - P.B. = PLAT BOOK
 - P.D.E. = PUBLIC DRAINAGE EASEMENT
 - PC. = PAGE
 - P.S.M. = PROFESSIONAL SURVEYOR AND MAPPER
 - P.R.M. = PERMANENT REFERENCE MONUMENT
 - P.T. = POINT OF TANGENCY
 - R/W = RIGHT-OF-WAY
 - S.S.E. = SAFE SIGHT EASEMENT
 - U.E. = UTILITY EASEMENT
 - = SET PERMANENT REFERENCE MONUMENT (P.R.M. LB 7062)
 - = FOUND PERMANENT CONTROL POINT (P.C.P. LB 7062)

NOTE- ALL LINES INTERSECTING CIRCULAR CURVES ARE RADIAL UNLESS NOTED.



MALLORY CREEK AT ABACOA - PLAT ONE
P.B. 109, PGS. 97-113

THIS INSTRUMENT PREPARED BY
WILBUR F. DIVINE, P.S.M. LS-4190 STATE OF FLORIDA
ARCADIS U.S. INC., LB 7062
ENGINEERS PLANNERS SURVEYORS
2081 VISTA PARKWAY
WEST PALM BEACH, FLORIDA 33411

