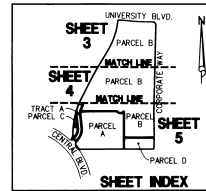


ABACOA - REPLAT OF TRACT WK4A

BEING A REPLAT OF TRACT WK4A, ACCORDING TO THE PLAT OF ABACOA - REPLAT OF TRACTS WK1, WK2, WK3 AND WK4, RECORDED IN PLAT BOOK 87, PAGES 148 THROUGH 153, PUBLIC RECORDS OF PALM BEACH COUNTY, FLORIDA, LYING IN SECTION 24, TOWNSHIP 41 SOUTH, RANGE 42 EAST, TOWN OF JUPITER, PALM BEACH COUNTY, FLORIDA

DECEMBER, 2010

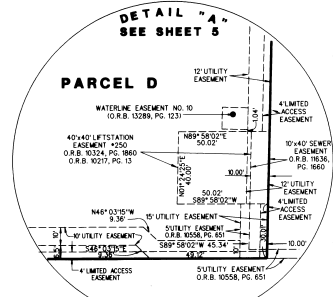
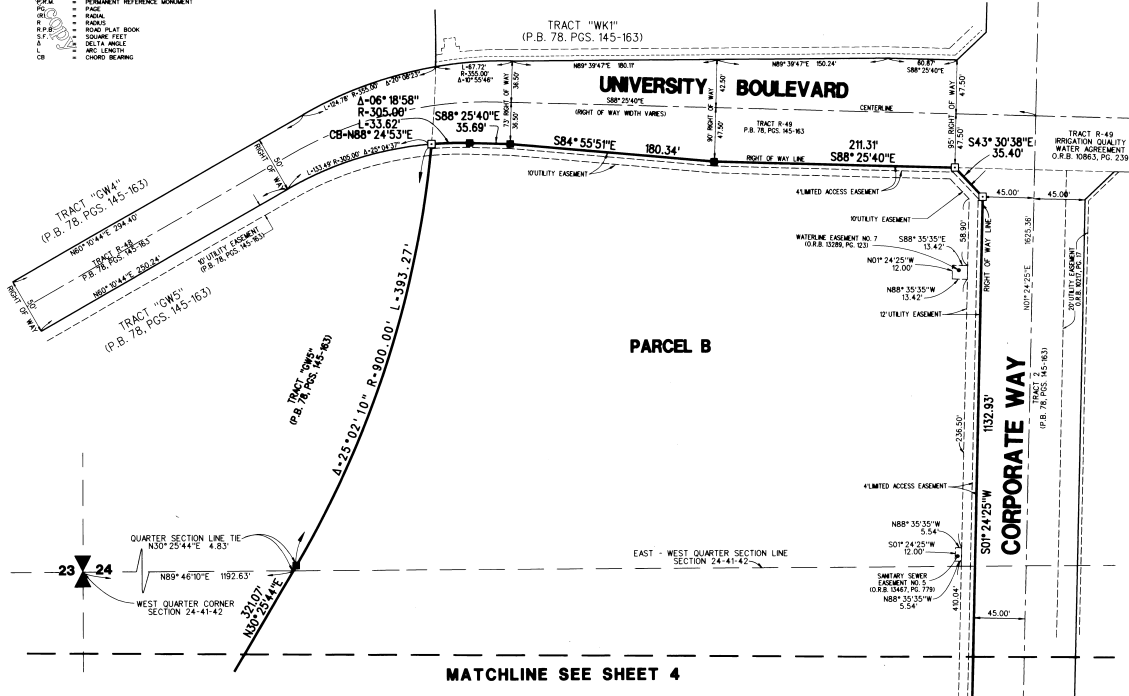
SHEET 3 OF 5



18

LEGEND / ABBREVIATIONS

- ④ SET NAIL & DISK STAMPED "TOP LB 4437"
- PERMANENT CORNER POINT (P.C.P.) UNLESS OTHERWISE NOTED
- FORM "X" CONCRETE MONUMENT & DISK STAMPED "TOP LB 28"
- SET "X" CONCRETE MONUMENT & DISK STAMPED "TOP LB 4437"
- PERMANENT REFERENCE MONUMENT (P.R.M.) UNLESS OTHERWISE NOTED
- CENTERLINE
- NOT RADIAL
- OFFICIAL RECORD BOOK
- PLAT BOOK
- P.S.A. POINT OF BEGINNING
- PERMANENT REFERENCE MONUMENT
- FACE
- RADIAL
- RADIUS
- R.P.S. RECORD BOOK
- SQUARE FEET
- DELTA ANGLE
- ARC LENGTH
- CHORD BEARING



LIDBERG LAND SURVEYING, INC.

LB4481 878 West Indiantown Road, Suite 200, Jupiter, Florida 33458 TEL: 561-748-9654

CAD: K.V. LUST \ 244142 \ 87-148 \ 05-053-306A \ 05-053-306A.DWG	
REV:	
F.L.D.:	FR. PG.
OFF. CASASIS:	JOB 05-053-306A
	DATE NOVEMBER 2010
CAD. D.C.L.	SHEET 3 OF 5
	DWG. 005-053P