

ABACOA - REPLAT OF TRACT WK4A

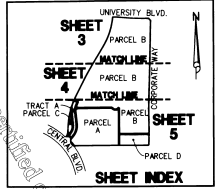
BEING A REPLAT OF TRACT WK4A, ACCORDING TO THE PLAT OF ABACOA - REPLAT OF TRACTS WK1, WK2, WK3 AND WK4, RECORDED IN PLAT BOOK 87, PAGES 148 THROUGH 153, PUBLIC RECORDS OF PALM BEACH COUNTY, FLORIDA, LYING IN SECTION 24, TOWNSHIP 41 SOUTH, RANGE 42 EAST, TOWN OF JUPITER, PALM BEACH COUNTY, FLORIDA

DECEMBER, 2010

SHEET 4 OF 5

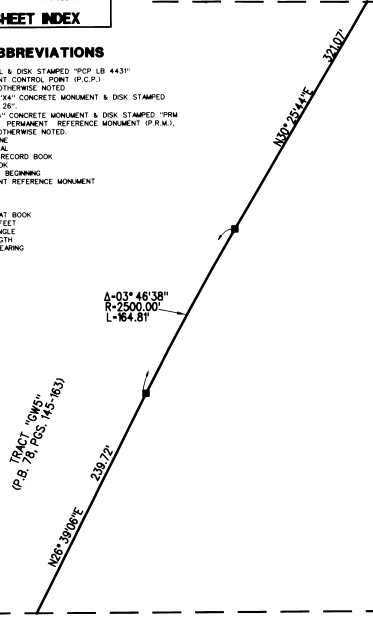
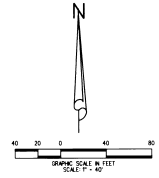
MATCHLINE SEE SHEET 3

MATCHLINE SEE SHEET 5

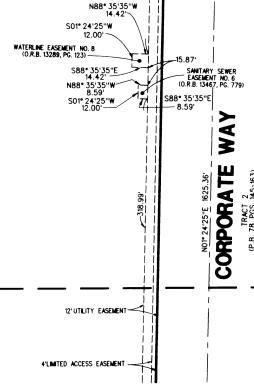


LEGEND / ABBREVIATIONS

- ⊙ SET NAIL & DISK STAMPED "PCP LB 4431" PERMANENT CONTROL POINT (P.C.P.) UNLESS OTHERWISE NOTED
- FOUND 4"x4" CONCRETE MONUMENT & DISK STAMPED "PRM LB 250" UNLESS OTHERWISE NOTED
- SET 4"x4" CONCRETE MONUMENT & DISK STAMPED "PRM LB 4431" PERMANENT REFERENCE MONUMENT (P.R.M.), UNLESS OTHERWISE NOTED
- ⊖ CENTERLINE
- ⊘ NOT RADIAL
- OR.B. = OFFICIAL RECORD BOOK
- P.B. = PLAT BOOK
- P.O.B. = POINT OF BEGINNING
- P.R.M. = PERMANENT REFERENCE MONUMENT
- PC. = PAGE
- IR. = RADIAL
- R. = RADUS
- R.P.B. = ROAD PLAT BOOK
- S.F. = SQUARE FEET
- Δ = DELTA ANGLE
- L = ARC LENGTH
- CB = CHORD BEARING



PARCEL B



	CAD: \\L\UST\244142\187-148\05-053-306A\05-053-306A.DGN			
	FLD: -	FB: PG.	JOB 05-053-306A	
	OFF. CASABUS	DATE		NOVEMBER 2010
	CED. D.C.L.	SHEET 4 OF 5	DWG.	005-053P
	<small>LB4481 475 West Melbourne Road, Suite 200, Jupiter, Florida 33458 TEL: 561-746-8444</small>			