

This is DO NOT SCALE

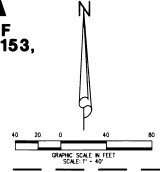
LEGEND / ABBREVIATIONS

- SET: 1/4" = 1'00" (STAMPED) 1/8" = 4.00"
- PERMANENT CONTROL POINT (P.C.P.) UNLESS OTHERWISE NOTED
- FOUND: 1/4" = 1'00" CONCRETE MONUMENT & DISK STAMPED
- FOUND: 1/8" = 1'00" CONCRETE MONUMENT & DISK STAMPED
- SET: 1/4" = 1'00" CONCRETE MONUMENT & DISK STAMPED WITH 1/8" = 4.00" PERMANENT REFERENCE MONUMENT (P.R.M.) UNLESS OTHERWISE NOTED
- UNLESS OTHERWISE NOTED:
- W.S.I. = WALL
- C. = CENTERLINE
- N.B. = NOT BOUND
- O.R.B. = OFFICIAL RECORD BOOK
- P.B. = PLAT BOOK
- P.O.B. = POINT OF BEGINNING
- P.P.M. = PERMANENT REFERENCE MONUMENT
- P.C. = PLAT CORNER
- R. = RADIAL
- R.P.B. = ROAD PLAT BOOK
- S. = SQUARE FEET
- Δ = DELTA ANGLE
- L = ARC LENGTH
- CH = CHORD BEARING

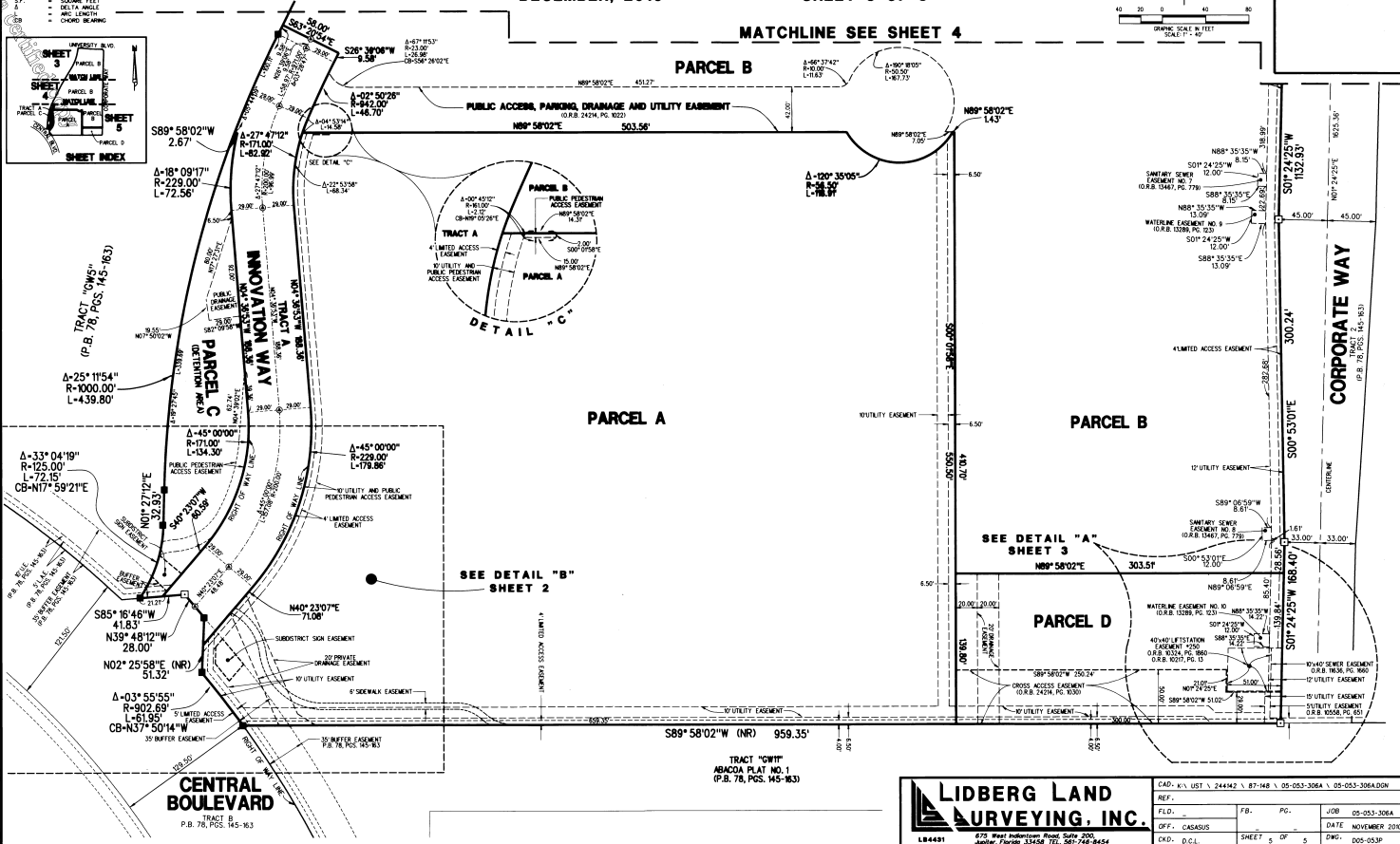
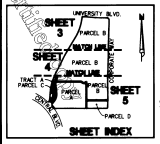
ABACOA - REPLAT OF TRACT WK4A

BEING A REPLAT OF TRACT WK4A, ACCORDING TO THE PLAT OF ABACOA - REPLAT OF TRACTS WK1, WK2, WK3 AND WK4, RECORDED IN PLAT BOOK 87, PAGES 148 THROUGH 153, PUBLIC RECORDS OF PALM BEACH COUNTY, FLORIDA, LYING IN SECTION 24, TOWNSHIP 41 SOUTH, RANGE 42 EAST, TOWN OF JUPITER, PALM BEACH COUNTY, FLORIDA

DECEMBER, 2010 SHEET 5 OF 5



MATCHLINE SEE SHEET 4



CENTRAL BOULEVARD
 TRACT B
 P.B. 78, PGS. 145-163

TRACT "01W"
 ABACOA PLAT NO. 1
 (P.B. 78, PGS. 145-163)

LIDBERG LAND SURVEYING, INC.

678 West Indiantown Road, Suite 200, Jupiter, Florida 33458 TEL: 561-748-8654

CAD: KVL, UST, V, 24442, V, 87-148, V, 05-053-306A, V, 05-053-306A-D00			
REV:	FR:	PG:	JOB: 05-053-306A
EXP. CASASIS			DATE: NOVEMBER 2010
KVD, D.C.L.	SHEET: 5	OF: 5	DWG: 005-053P