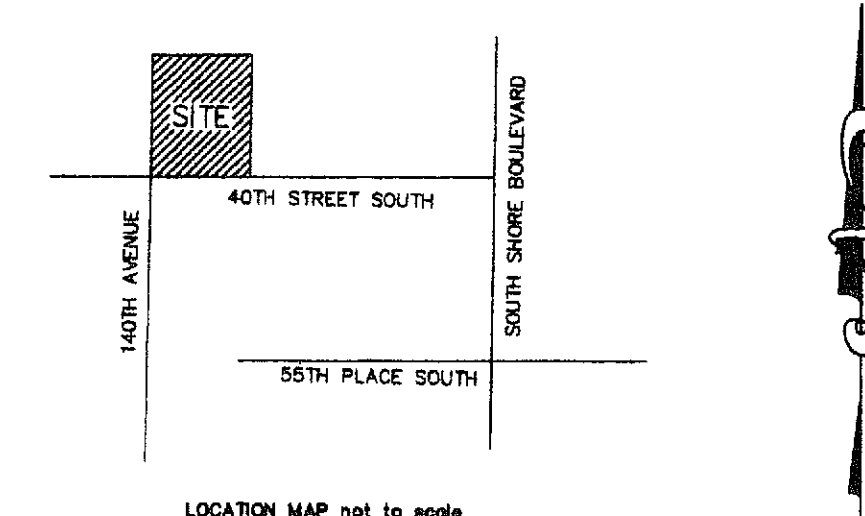
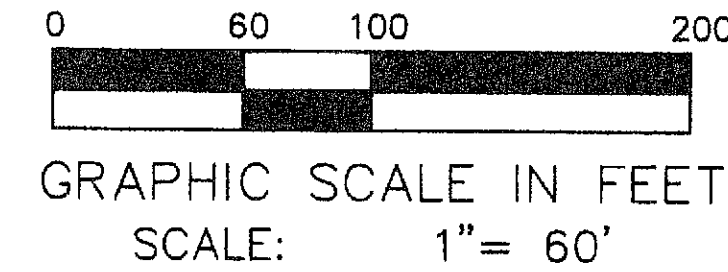


MIDA FARMS
IN SECTION 21, TOWNSHIP 44 SOUTH, RANGE 41 EAST
VILLAGE OF WELLINGTON
PALM BEACH COUNTY, FLORIDA
MARCH, 2011
SHEET 2 OF 3



STATE OF FLORIDA
COUNTY OF PALM BEACH
This Plat was filed for record
at _____ M. this _____ day
of _____, 2011,
and duly recorded in Plat Book
No. _____ on page _____,

SHARON R. BOCK,
Clerk Circuit Court
& Comptroller

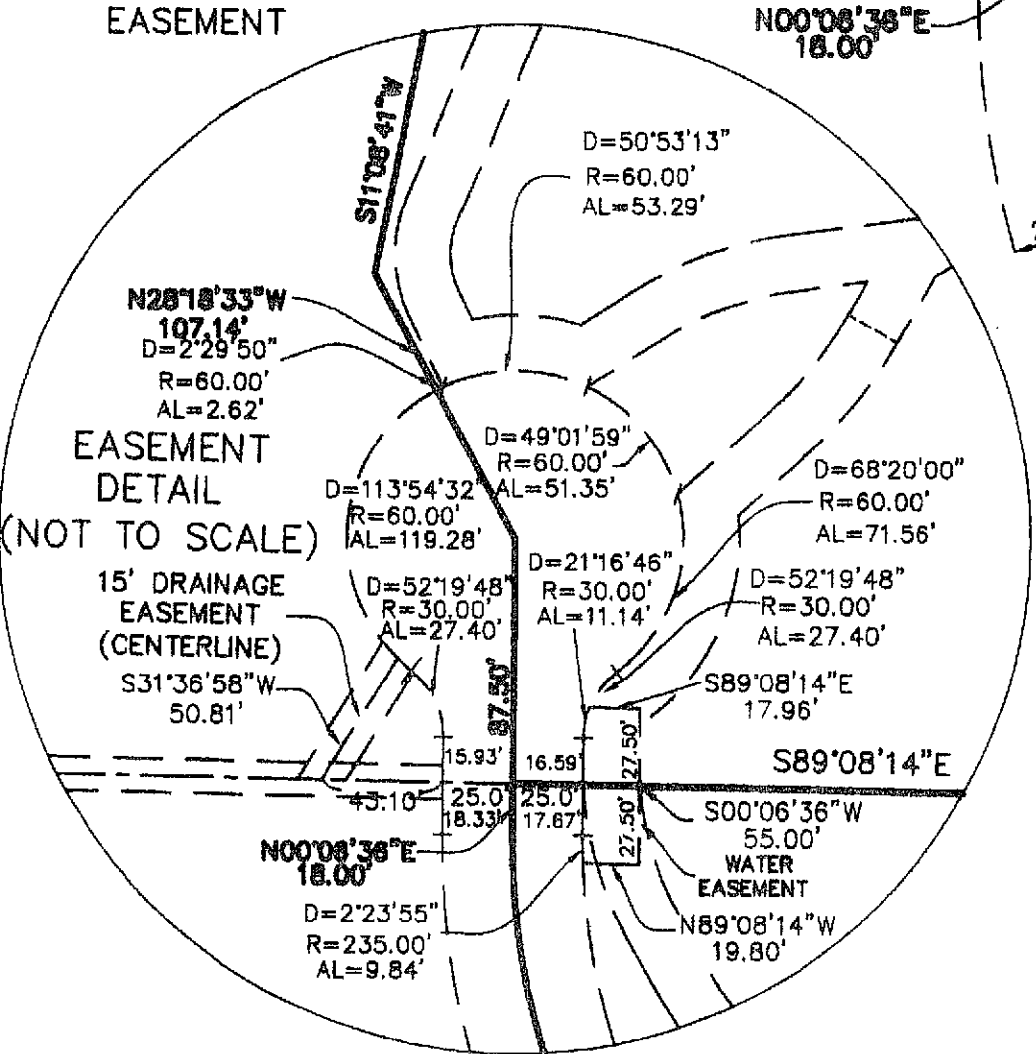
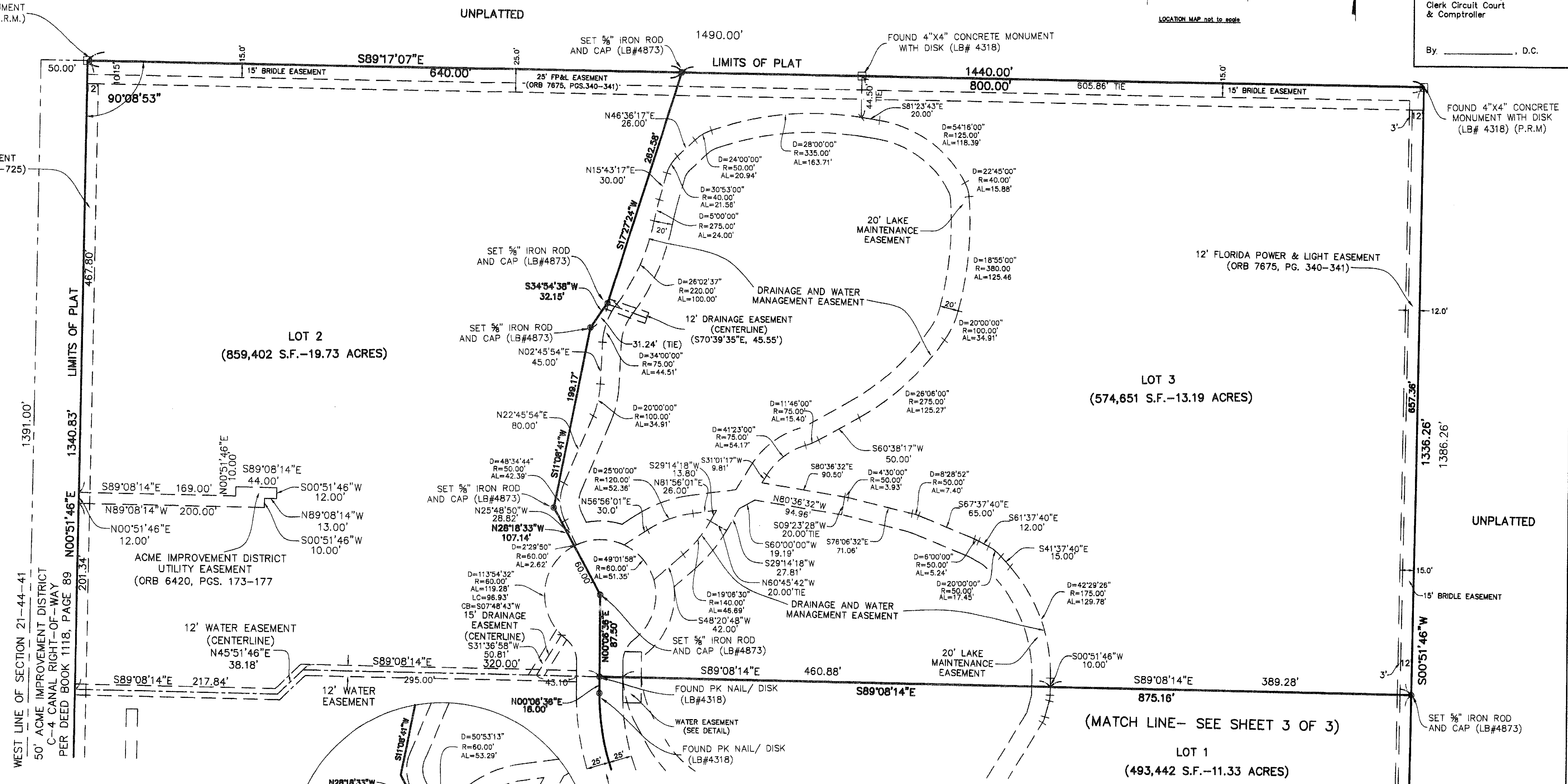
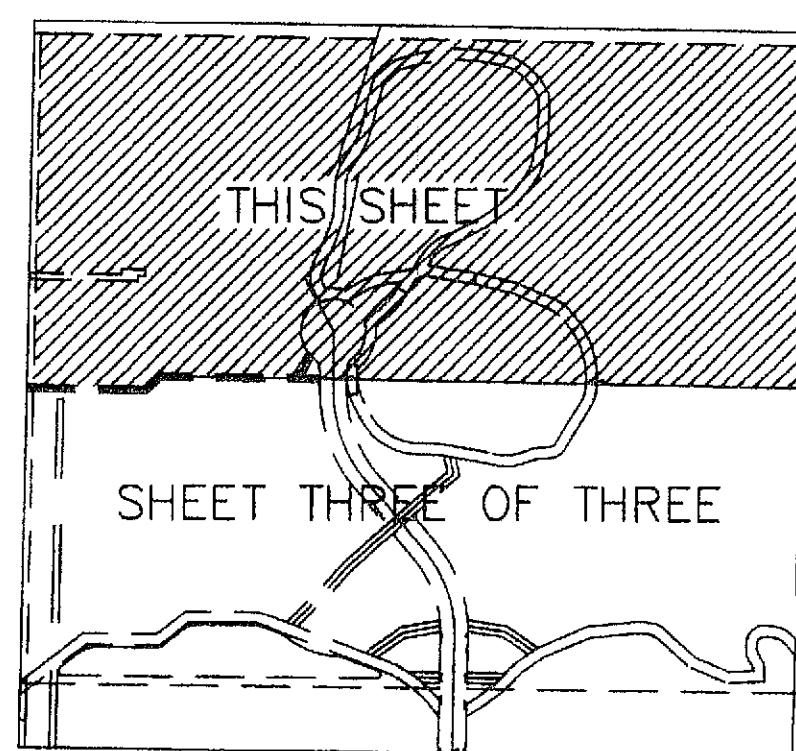
By _____, D.C.

FOUND 4"x4" CONCRETE MONUMENT
WITH DISK (LB# 4318) (P.R.M.)

12' UTILITY EASEMENT
(ORB 8119, PGS.722-725)

140TH AVENUE SOUTH

SHEET INDEX



LEGEND

- D.B. = Deed Book
- P.B. = Plat Book
- P.B.C.R. = Palm Beach County Records
- P.C.P. = Permanent Control Point
- PRM or [] = Permanent Reference Monument
- ⊙ = 5/8" Iron Rod and Cap (LB#4873)
- O.R.B. = Official Record Book
- D = Delta Angle
- R = Radius
- AL = Arc Length
- PK = Parker Kalon Nail

FILE NO.
8190
(3-10-2011)

MARK D. LAING, PSM.
FLORIDA CERTIFICATE NO.: LS 5119

JDC Development Services, Inc.
EB#4873 LB#4873
570-A Royal Palm Beach Boulevard,
Royal Palm Beach, Florida, 33411
Fax: (561) 790-4488 (561) 790-4471