

# PINE TREE GOLF CLUB - LOTS 171 & 172

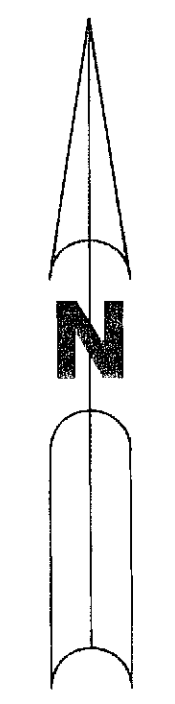
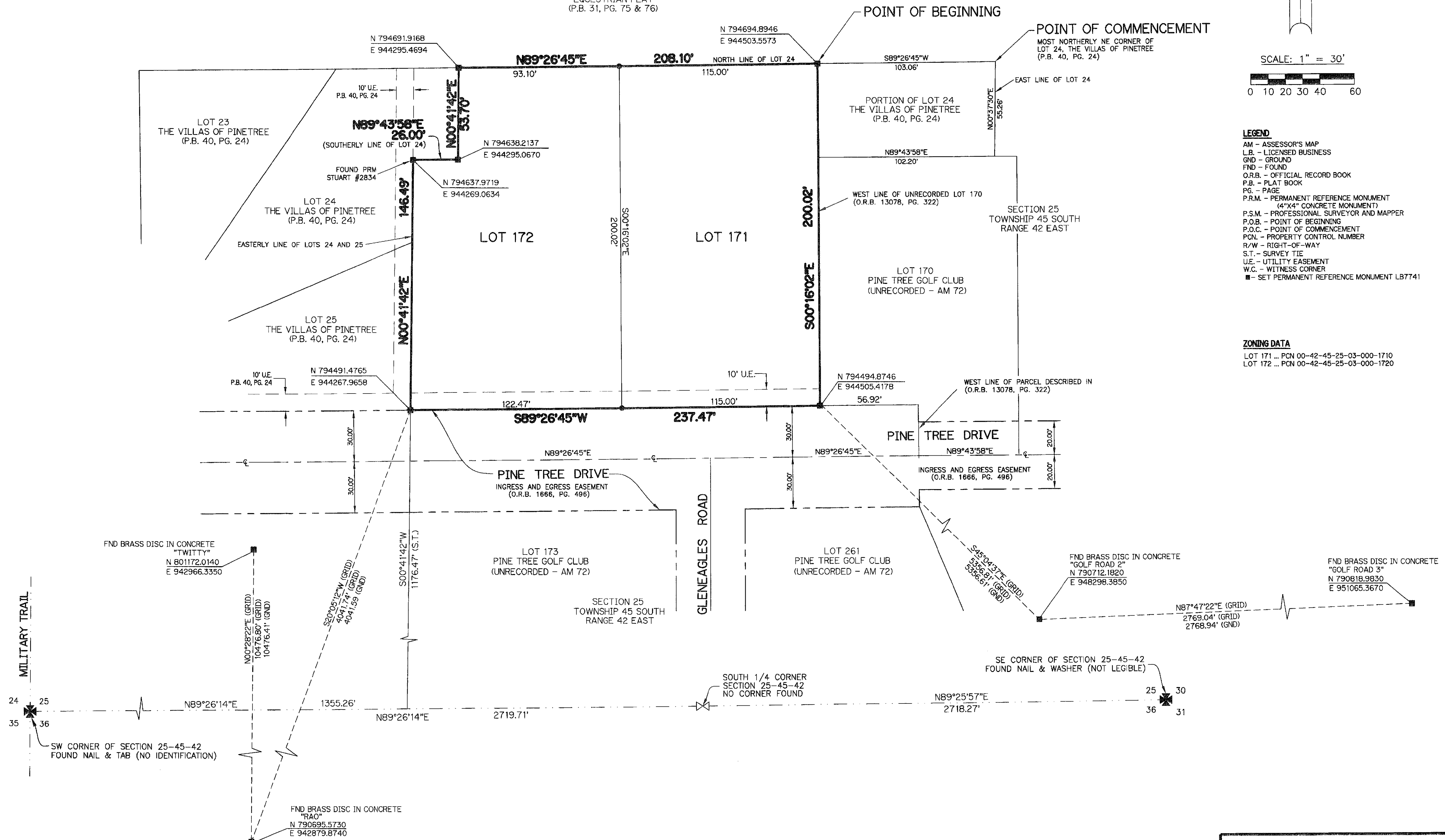
63

BEING A REPLAT OF A PORTION OF LOT 24, THE VILLAS OF PINETREE,  
AS RECORDED IN PLAT BOOK 40, PAGES 24 THROUGH 26, PUBLIC RECORDS OF  
PALM BEACH COUNTY, FLORIDA AND A PORTION OF THE SOUTHWEST ONE-QUARTER OF  
SECTION 25, TOWNSHIP 45 SOUTH, RANGE 42 EAST.

SHEET 2 OF 2 JUNE, 2011

THIS INSTRUMENT PREPARED BY  
PERRY C. WHITE, P.S.M. 4213, STATE OF FLORIDA  
SAND & HILLS SURVEYING, INC.  
8461 LAKE WORTH ROAD, SUITE 410  
LAKE WORTH, FLORIDA 33467  
LB-7741

TRACT "B"  
EQUESTRIAN PLAT  
(P.B. 31, PG. 75 & 76)



SCALE: 1" = 30'  
0 10 20 30 40 60

- LEGEND**
- AM - ASSESSOR'S MAP
  - L.B. - LICENSED BUSINESS
  - GND - GROUND
  - FND - FOUND
  - O.R.B. - OFFICIAL RECORD BOOK
  - P.B. - PLAT BOOK
  - PG. - PAGE
  - P.R.M. - PERMANENT REFERENCE MONUMENT (4"x4" CONCRETE MONUMENT)
  - P.S.M. - PROFESSIONAL SURVEYOR AND MAPPER
  - P.O.B. - POINT OF BEGINNING
  - P.O.C. - POINT OF COMMENCEMENT
  - PCN. - PROPERTY CONTROL NUMBER
  - R/W - RIGHT-OF-WAY
  - S.T. - SURVEY TIE
  - U.E. - UTILITY EASEMENT
  - W.C. - WITNESS CORNER
  - - SET PERMANENT REFERENCE MONUMENT LB7741

**ZONING DATA**  
LOT 171 ... PCN 00-42-45-25-03-000-1710  
LOT 172 ... PCN 00-42-45-25-03-000-1720