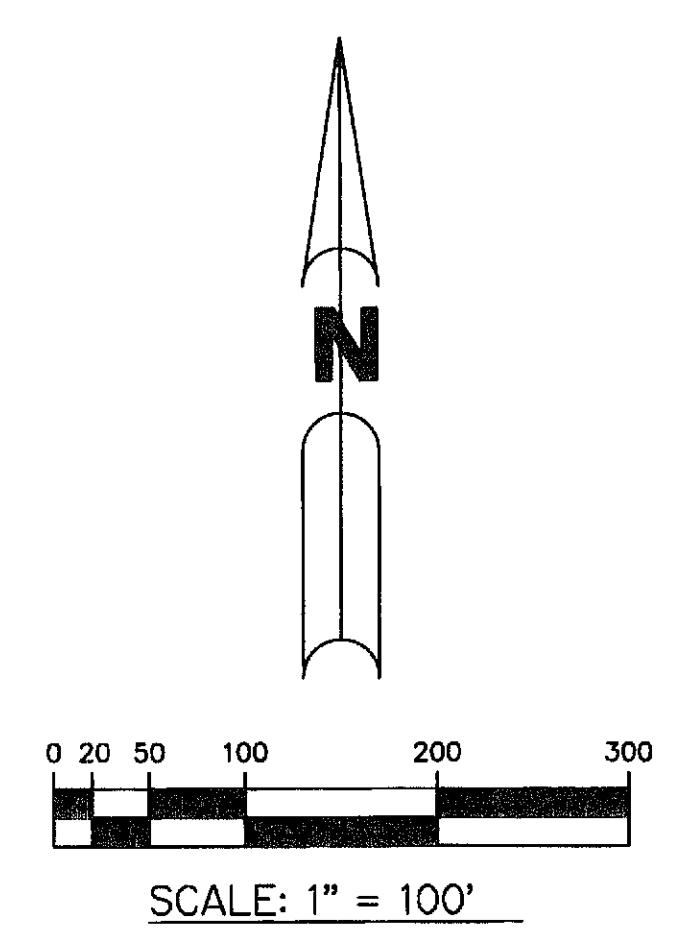
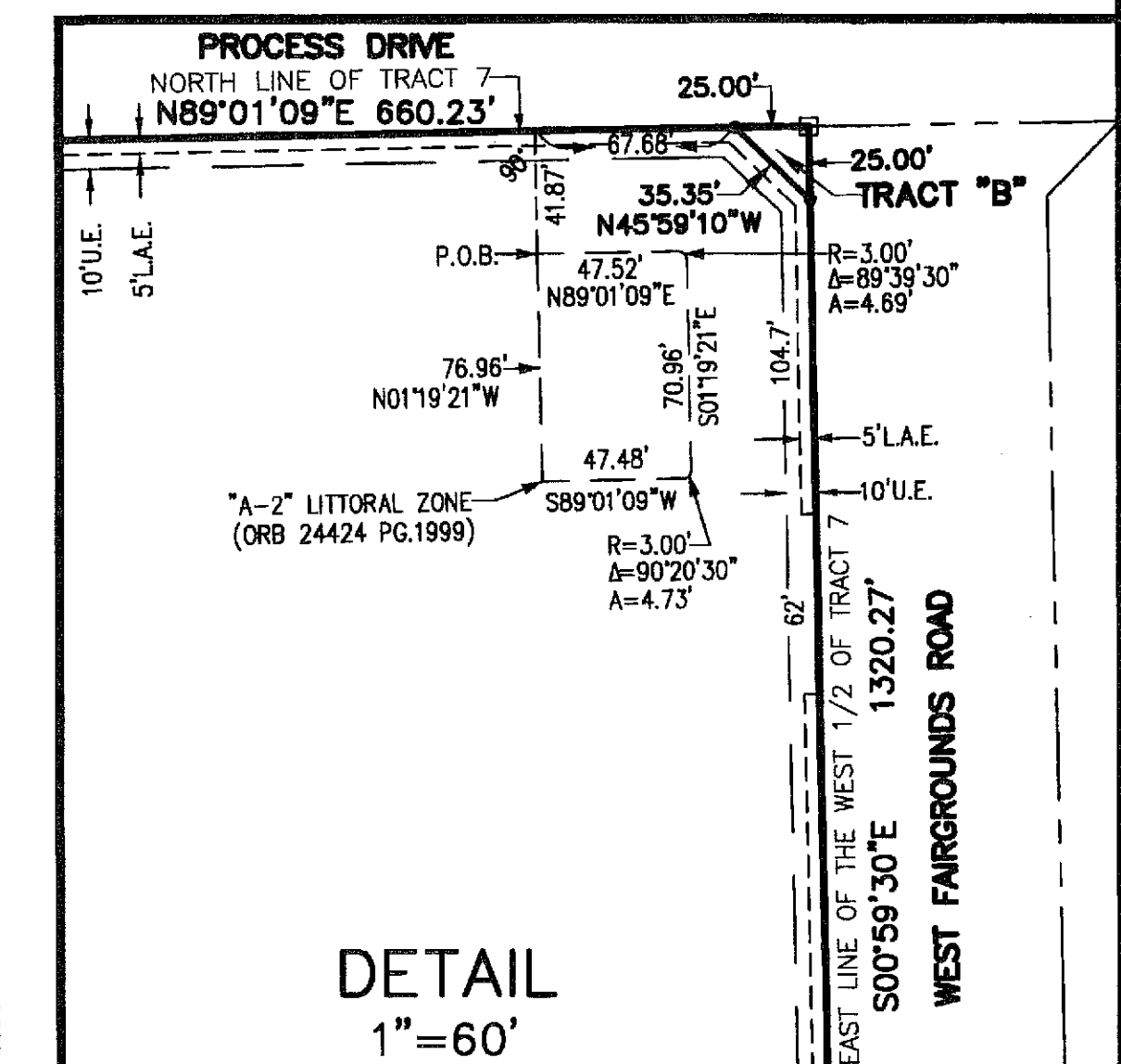
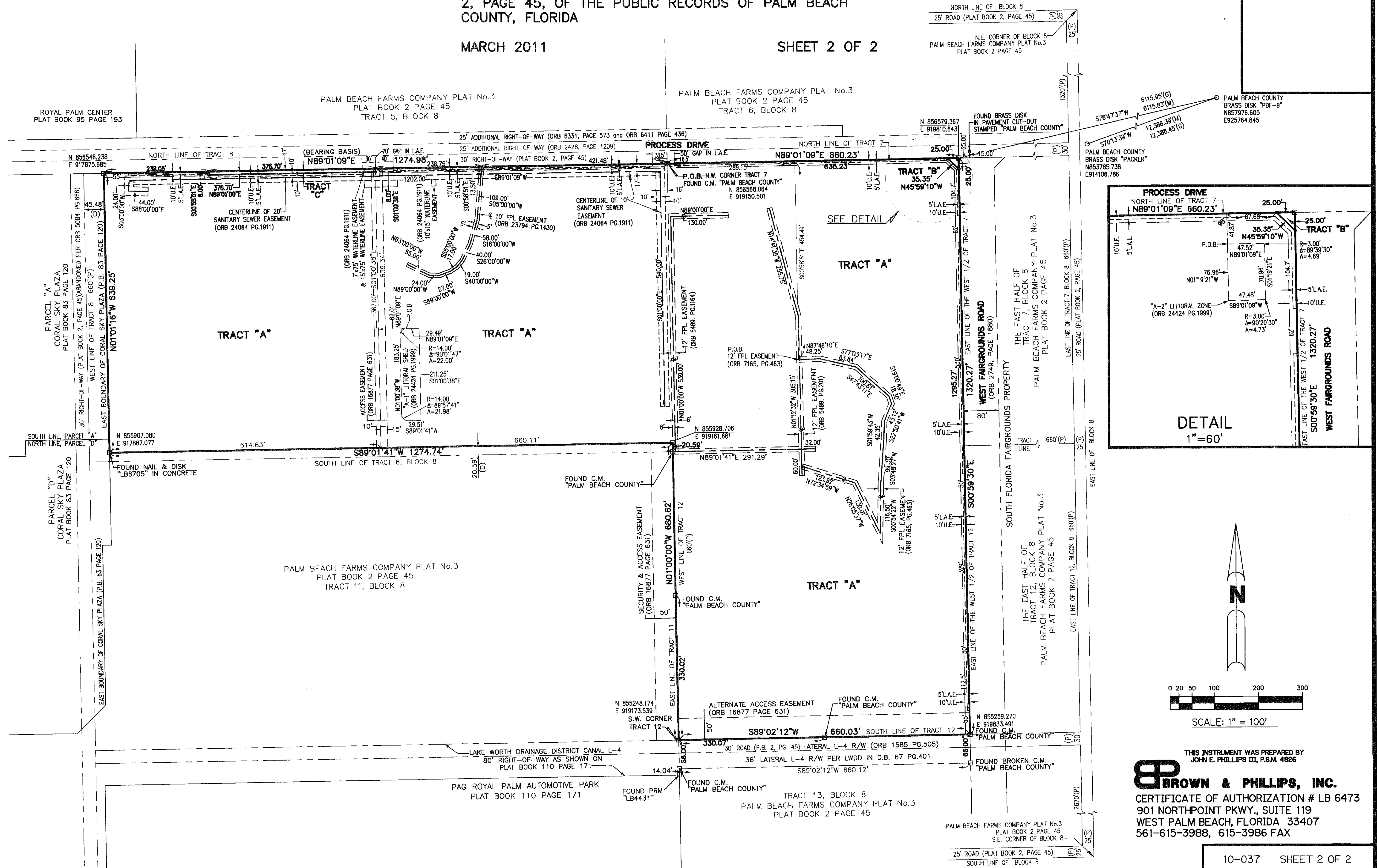


PALM BEACH COUNTY STOCKADE

LYING IN SECTION 31, TOWNSHIP 43 SOUTH, RANGE 42 EAST, PALM BEACH COUNTY, FLORIDA, BEING A REPLAT OF TRACT 8 AND THE WEST ONE-HALF OF TRACTS 7 AND 12, BLOCK 8, PALM BEACH FARMS Co. PLAT No.3, RECORDED IN PLAT BOOK 2, PAGE 45, OF THE PUBLIC RECORDS OF PALM BEACH COUNTY, FLORIDA

MARCH 2011

SHEET 2 OF 2



THIS INSTRUMENT WAS PREPARED BY
BROWN & PHILLIPS, INC.
 CERTIFICATE OF AUTHORIZATION # LB 6473
 901 NORTHPOINT PKWY., SUITE 119
 WEST PALM BEACH, FLORIDA 33407
 561-615-3988, 615-3986 FAX