

0878-001

DETAIL
SCALE: 1"=10'

PARCEL 32, P.U.D.

A PLANNED UNIT DEVELOPMENT
BEING A PLAT OF A PORTION OF THE NORTHEAST ONE-QUARTER OF
SECTION 29, TOWNSHIP 41 SOUTH, RANGE 43 EAST,
PALM BEACH COUNTY, FLORIDA

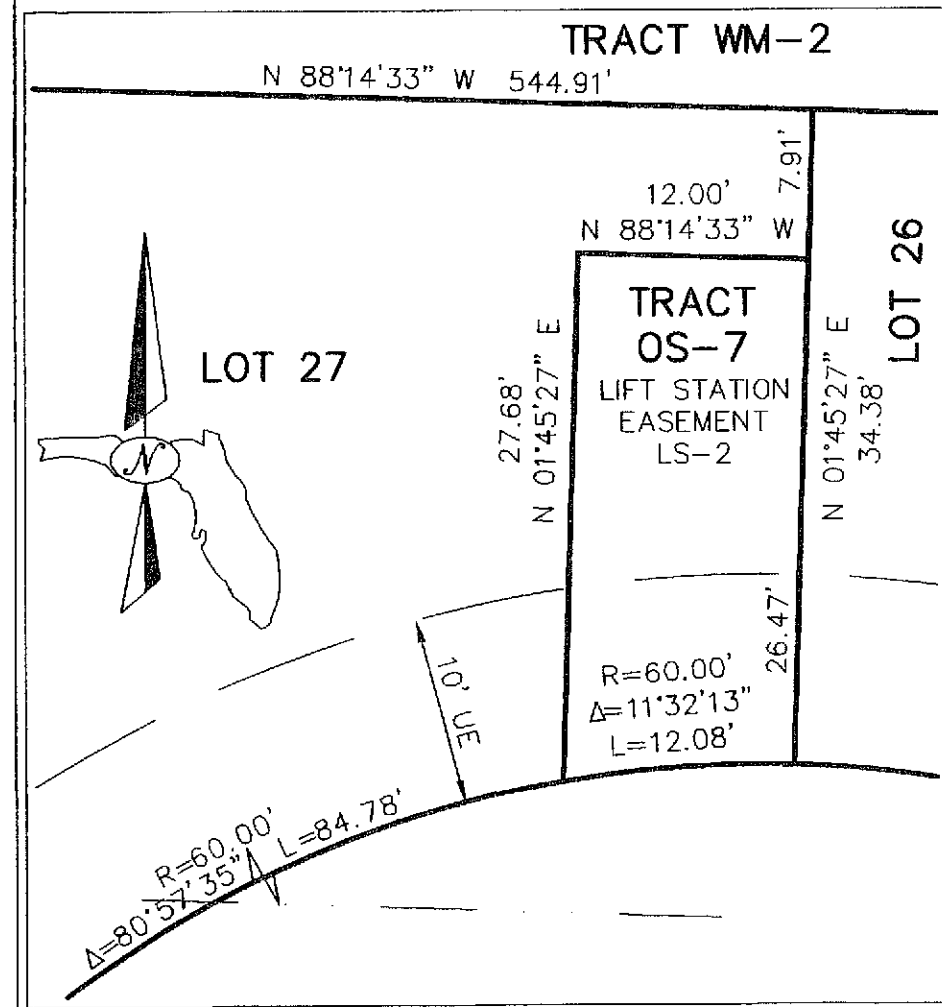
THIS INSTRUMENT PREPARED BY
DAVID P. LINDLEY
OF
CAULFIELD and WHEELER, INC.
SURVEYORS - ENGINEERS - PLANNERS
7301-A WEST PALMETTO PARK ROAD, SUITE 100A
BOCA RATON, FLORIDA 33433 - (561)392-1991
JANUARY-2010

94

STATE OF FLORIDA
COUNTY OF PALM BEACH
THIS PLAT WAS FILED FOR
RECORD AT _____ M.
THIS _____ DAY OF _____
A.D. 20____ AND DULY RECORDED
IN PLAT BOOK _____ ON
PAGES _____ AND _____
SHARON R. BOCK
CLERK AND COMPTROLLER

By: _____
DEPUTY CLERK

SHEET 15 OF 18



NORTH 1/4 CORNER OF SECTION 29-41-43 CORNER NOT FOUND HELD PALM BEACH COUNTY POSITION SURVEY DEPARTMENT DATA N=927445.050 E=959800.163

A PORTION OF THE SE. 1/4 OF SECTION 20-41S-43E (UNPLATTED LANDS)

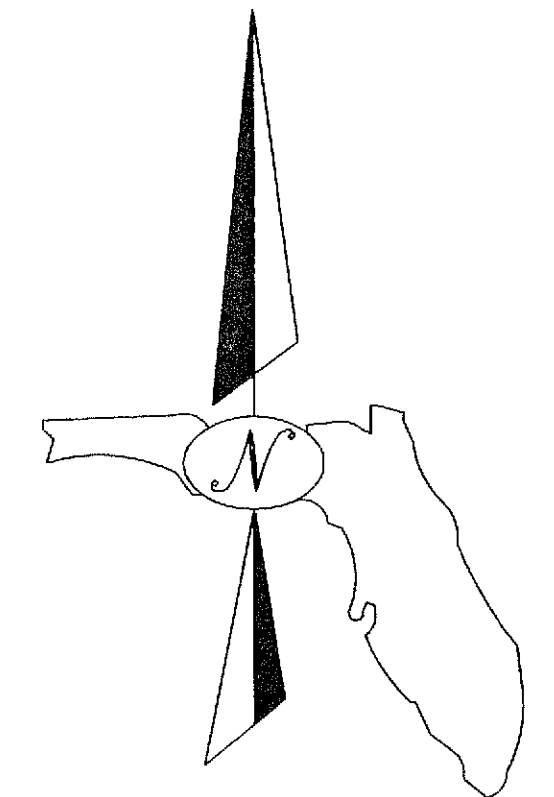
NORTH LINE OF SECTION 29-41-43

DONALD ROSS ROAD
(VARIABLE WIDTH R/W)
PER ORB 9, PG 418, DB 875, PG 285,
DB 1005, PG 324 & ORB 9577, PG 178, PBCR

PERPETUAL R/W EASEMENT INTRACOASTAL WATERWAY (PLAT BOOK 17, PG 7)

PRESERVATION TRACT 3
PRESERVATION TRACT 3 IS SUBJECT TO A CONSERVATION EASEMENT AS RECORDED IN ORB 20471, PG 1690, PBCR

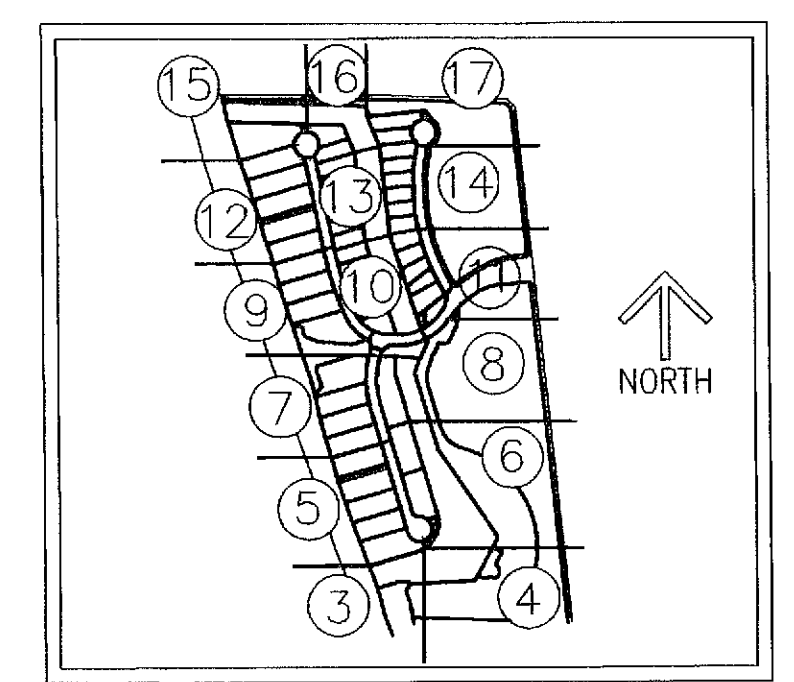
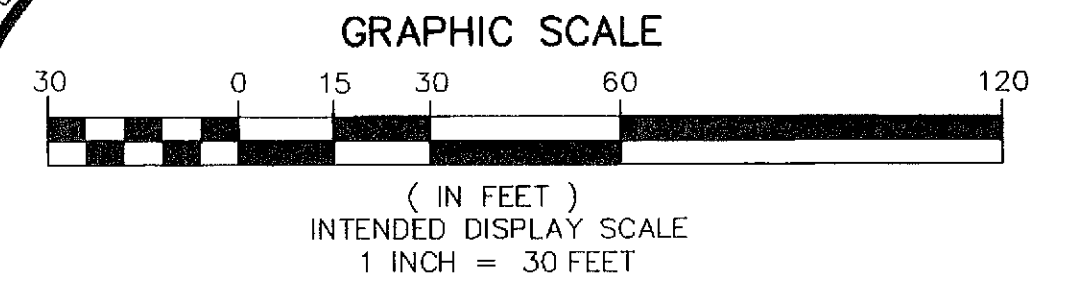
MATCHLINE SHEET 16 OF 18



WEST LINE OF PERPETUAL R/W EASEMENT OF THE INTRACOASTAL WATERWAY (PB 17, PG 7, PBCR)

500' WIDE PERPETUAL R/W EASEMENT FOR THE INTRACOASTAL WATERWAY (PB 17, PG 7, PBCR)

SEE DETAIL



SHEET INDEX
NOT TO SCALE

NOTE:
PRESERVATION TRACTS 1, 2, 3, 4, 5 AND 6 AS SHOWN HEREON, ARE HEREBY DEDICATED TO NORTHERN PALM BEACH COUNTY IMPROVEMENT DISTRICT (NFBID), ITS SUCCESSORS AND ASSIGNS, FOR CONSERVATION AREAS AND IS THE PERPETUAL MAINTENANCE OBLIGATION OF SAID NFBID, ITS SUCCESSORS AND ASSIGNS, WITHOUT RECOURSE TO PALM BEACH COUNTY, AS PER ARTICLE 14.C, OF THE PALM BEACH COUNTY LAND DEVELOPMENT CODE, THE TRACTS ARE SUBJECT TO A CONSERVATION EASEMENT RECORDED IN OFFICIAL RECORDS BOOK 20471, PAGES 1690 THROUGH 1744 OF THE PUBLIC RECORDS OF PALM BEACH COUNTY, FLORIDA.

MATCHLINE SHEET 12 OF 18

MATCHLINE SHEET 12 OF 18

347.76'

13907

N 73°44'04" E 256.63'(C)
N 17°16'15" W 99.99
N 17°21'00" W 99.32
S 18°15'56" E 89.12'
S 18°15'56" E 99.32'
N 17°21'00" W 99.32'
N 17°21'00" W 73.36'
N 17°21'00" W 73.36'
N 11°14'11" W 16.79'
N 11°14'11" W 16.79'
N 11°14'11" W 16.79'
N 11°14'11" W 16.79'
S 85°35'07" W RADIAL
N 16°38'56" W 7.79'
N 12°37'24" W 1.58'
N 89°47'26" E 1.82'
R=5.20' Δ=156°24'00" L=14.19'
N 89°19'47" W 42.09'
N 86°55'43" W 40.02'
N 87°52'47" W 3.86'
N 40°15'06" W 2.40'
N 89°38'42" E 259.50'
N 89°38'42" E 143.68'
R=18,615.37' Δ=02°27'05" L=796.46'
N 88°14'33" W 544.91'
N 88°14'33" W 372.84'
N 88°14'33" W 276.18'
N 88°14'22" W 508.27'
S 73°44'04" W 265.38'
TO U/L R=60.00'
Δ=80°57'35" L=84.78'