

OLD PALM PLAT THREE REPLAT OF LOTS 123 THROUGH 143

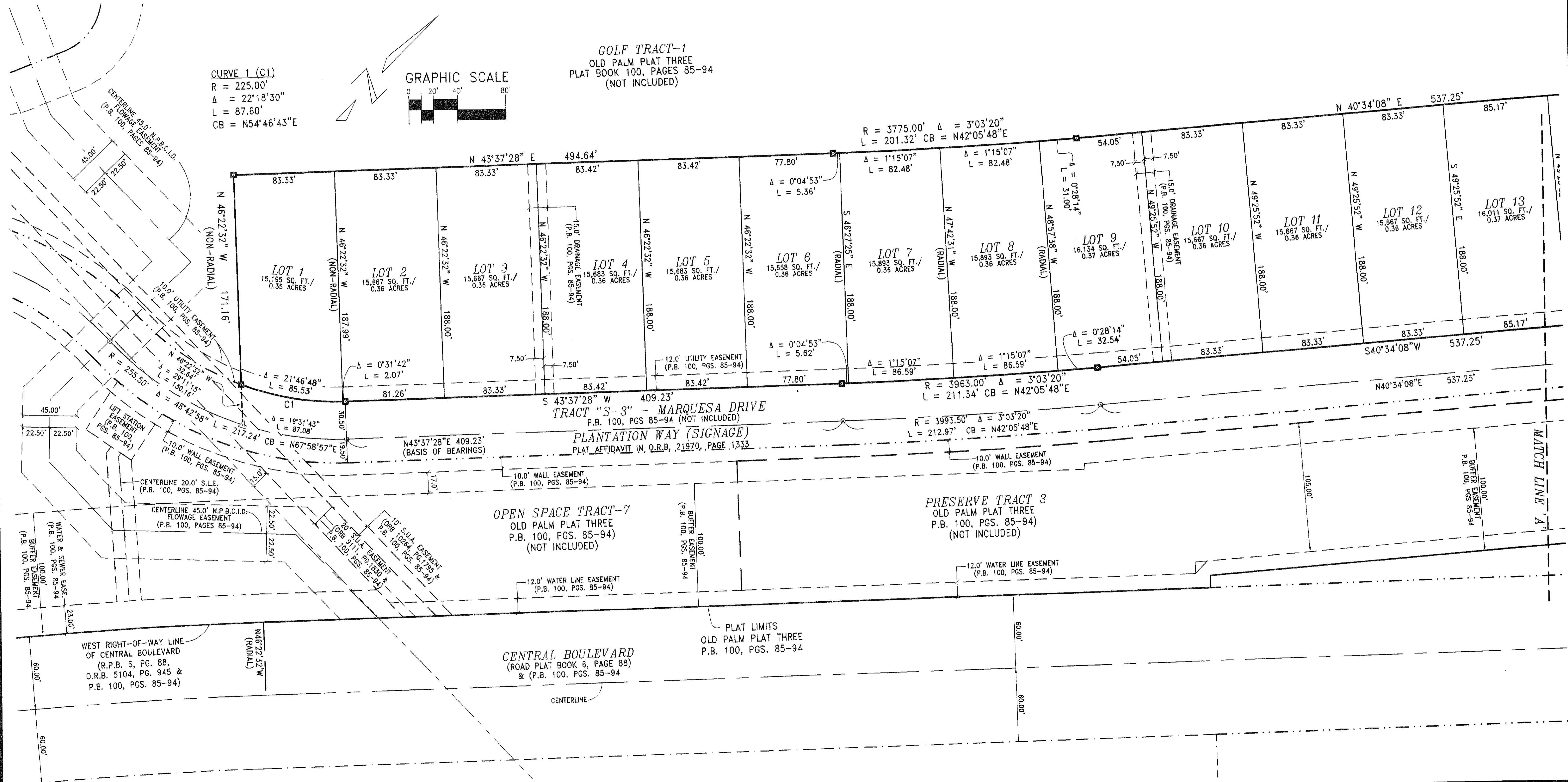
105

A REPLAT OF LOTS 123 THROUGH 143, INCLUSIVE, OLD PALM PLAT THREE, AS RECORDED IN PLAT BOOK 100, PAGES 85 THROUGH 94, PUBLIC RECORDS OF PALM BEACH COUNTY, FLORIDA, LYING IN THE SOUTH ONE-HALF OF SECTION 35, TOWNSHIP 41 SOUTH, RANGE 42 EAST, CITY OF PALM BEACH GARDENS, PALM BEACH COUNTY, FLORIDA
SHEET 2 OF 4
AUGUST 2011

STATE OF FLORIDA
COUNTY OF PALM BEACH
THIS PLAT WAS FILED
FOR RECORD AT _____ M.
THIS DAY OF _____ 2011
AND DULY RECORDED IN PLAT
NO. _____ ON PAGES _____
THRU _____

SHARON R. BOCK
CLERK AND COMPTROLLER

BY _____ D.C.



LEGEND OF SYMBOLS & ABBREVIATIONS:

■ = 4"x4" CONCRETE MONUMENT STAMPED	MON. = MONUMENT	P.C. = POINT OF CURVATURE	FPL = FLORIDA POWER & LIGHT
"P.R.M. LB4897" OR AS NOTED	C/L = CENTERLINE	P.T. = POINT OF TANGENCY	L.A.E. = LIMITED ACCESS EASEMENT
⊙ = FOUND MAG NAIL & DISK STAMPED "P.C.P. LB4897"	R = RADIUS	SUA = SEACAST UTILITY AUTHORITY	L.B.E. = LANDSCAPE BUFFER EASEMENT
Δ = SET MAG NAIL & DISK STAMPED "P.C.P. LB4897"	L = ARC LENGTH	W.L.E. = WATER LINE EASEMENT	L.M.E. = LAKE MAINTENANCE EASEMENT
P.R.M. = PERMANENT REFERENCE MONUMENT	Δ = DELTA	U.E. = UTILITY EASEMENT	LB = LICENSED BUSINESS
CONC. = CONC.	CB = CHORD BEARING	N.P.B.C.I.D. = NORTHERN PALM BEACH COUNTY IMPROVEMENT DISTRICT	O.R.B. = OFFICIAL RECORD BOOK
			P.B. = PLAT BOOK
			PG = PAGE
			PGS. = PAGES
			P.C.P. = PERMANENT CONTROL POINT

CAD FILE: Z:\2011\11-962 OP PARCEL A-OP PLAT 3 LOTS 123-143\
DWG\V-11-962 OP PLAT 3 RE-PLAT LOTS 123-143.DWG

DATE: 04/19/2011	CHECKED: SFB	PROJECT No.
SCALE: 1" = 40'	APPROVED: SFB	11-962
DRAWN: SFB	DWG No. D11-962P	

Keshavarz & Associates, Inc.
CONSULTING ENGINEERS - SURVEYORS
711 North Dixie Highway, Suite 201
West Palm Beach, Florida 33401
Tel: (561) 689-8600 Fax: (561) 689-7476 LB 4897

PLOT DATE: Jul 27, 2011 TIME: 9:08am BY: sharon
 DRAWING: Z:\2011\11-962 OP Parcel A-OP Plat 3 Lots 123-143.dwg V-11-962 OP Plat 3 re-plat Lots 123-143.dwg LAYOUT: Sheet 2