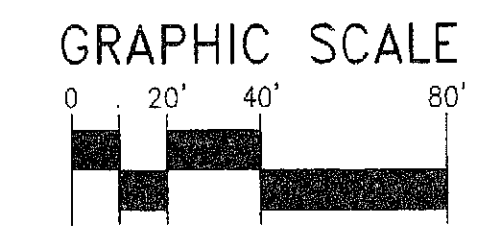
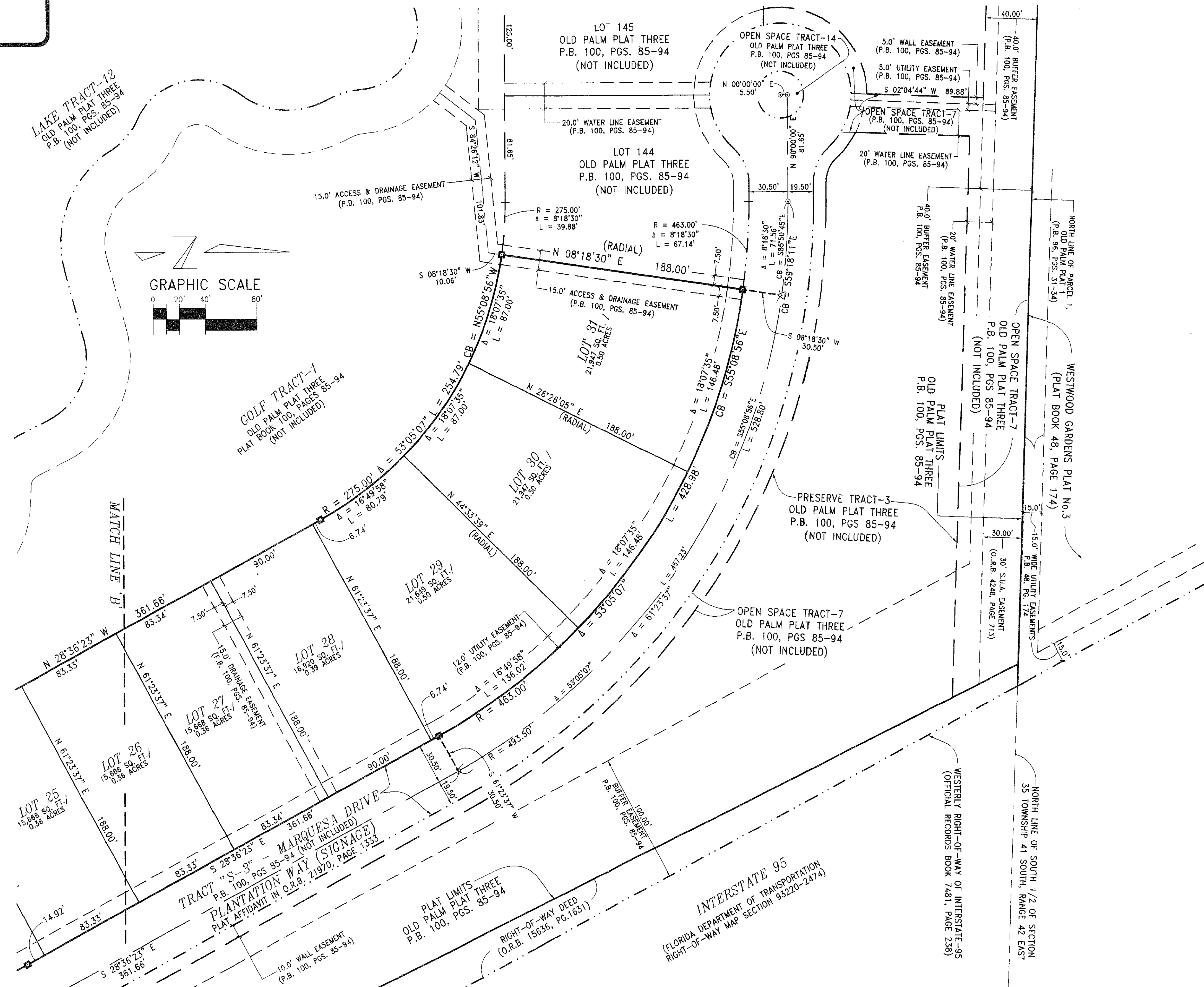


# OLD PALM PLAT THREE REPLAT OF LOTS 123 THROUGH 143

A REPLAT OF LOTS 123 THROUGH 143, INCLUSIVE, OLD PALM PLAT THREE, AS RECORDED IN PLAT BOOK 100, PAGES 85 THROUGH 94, PUBLIC RECORDS OF PALM BEACH COUNTY, FLORIDA, LYING IN THE SOUTH ONE-HALF OF SECTION 35, TOWNSHIP 41 SOUTH, RANGE 42 EAST, CITY OF PALM BEACH GARDENS, PALM BEACH COUNTY, FLORIDA  
SHEET 4 OF 4  
AUGUST 2011

107

STATE OF FLORIDA  
COUNTY OF PALM BEACH  
THIS PLAT WAS FILED  
FOR RECORD AT \_\_\_\_\_ M.  
THIS DAY OF \_\_\_\_\_, 2011  
AND DULY RECORDED IN PLAT  
NO. \_\_\_\_\_ ON PAGES \_\_\_\_\_  
THRU \_\_\_\_\_  
  
SHARON R. BOCK  
CLERK AND COMPTROLLER  
  
BY \_\_\_\_\_ D.C.



**LEGEND OF SYMBOLS & ABBREVIATIONS:**

<ul style="list-style-type: none"> <li>■ = 4"x4" CONCRETE MONUMENT STAMPED "P.R.M. LB4897" OR AS NOTED</li> <li>⊙ = FOUND MAG NAIL &amp; DISK STAMPED "P.C.P. LB4897"</li> <li>△ = SET MAG NAIL &amp; DISK STAMPED "P.C.P. LB4897"</li> <li>P.R.M. = PERMANENT REFERENCE MONUMENT</li> <li>CONC. = CONC.</li> </ul>	<ul style="list-style-type: none"> <li>MON. = MONUMENT</li> <li>C/L = CENTERLINE</li> <li>R = RADIUS</li> <li>L = ARC LENGTH</li> <li>Δ = DELTA</li> <li>CB = CHORD BEARING</li> </ul>	<ul style="list-style-type: none"> <li>P.C. = POINT OF CURVATURE</li> <li>P.T. = POINT OF TANGENCY</li> <li>SUA = SEACOAST UTILITY AUTHORITY</li> <li>W.L.E. = WATER LINE EASEMENT</li> <li>U.E. = UTILITY EASEMENT</li> <li>N.P.B.C.I.D. = NORTHERN PALM BEACH COUNTY IMPROVEMENT DISTRICT</li> </ul>	<ul style="list-style-type: none"> <li>FPL = FLORIDA POWER &amp; LIGHT</li> <li>L.A.E. = LIMITED ACCESS EASEMENT</li> <li>L.B.E. = LANDSCAPE BUFFER EASEMENT</li> <li>L.M.E. = LAKE MAINTENANCE EASEMENT</li> <li>LB = LICENSED BUSINESS</li> <li>O.R.B. = OFFICIAL RECORD BOOK</li> <li>P.B. = PLAT BOOK</li> </ul>	<ul style="list-style-type: none"> <li>PG = PAGE</li> <li>PGS. = PAGES</li> <li>P.C.P. = PERMANENT CONTROL POINT</li> </ul>
---	--	--	--	---

CAD FILE: Z:\2011\11-962 OP PARCEL A-OP PLAT 3 LOTS 123-143\DWG\11-962 OP PLAT 3 RE-PLAT LOTS 123-143.DWG		
DATE: 04/19/2011	CHECKED: SFB	PROJECT No.
SCALE: 1" = 40'	APPROVED: SFB	11-962
DRAWN: SFB	DWG No. D11-962P	

**Keshavarz & Associates, Inc.**  
CONSULTING ENGINEERS - SURVEYORS  
711 North Dixie Highway, Suite 201  
West Palm Beach, Florida 33401  
Tel: (561) 689-8600 Fax: (561) 689-7476 LB 4897

PLOT DATE: Jul 27, 2011 TIME: 9:11am BY: sbyron  
 DRAWING: Z:\2011\11-962 OP Parcel A-op Plat 3 Lots 123-143.dwg (11-962 OP Plat 3 re-plat Lots 123-143.dwg) LAYOUT: Sheet 4