

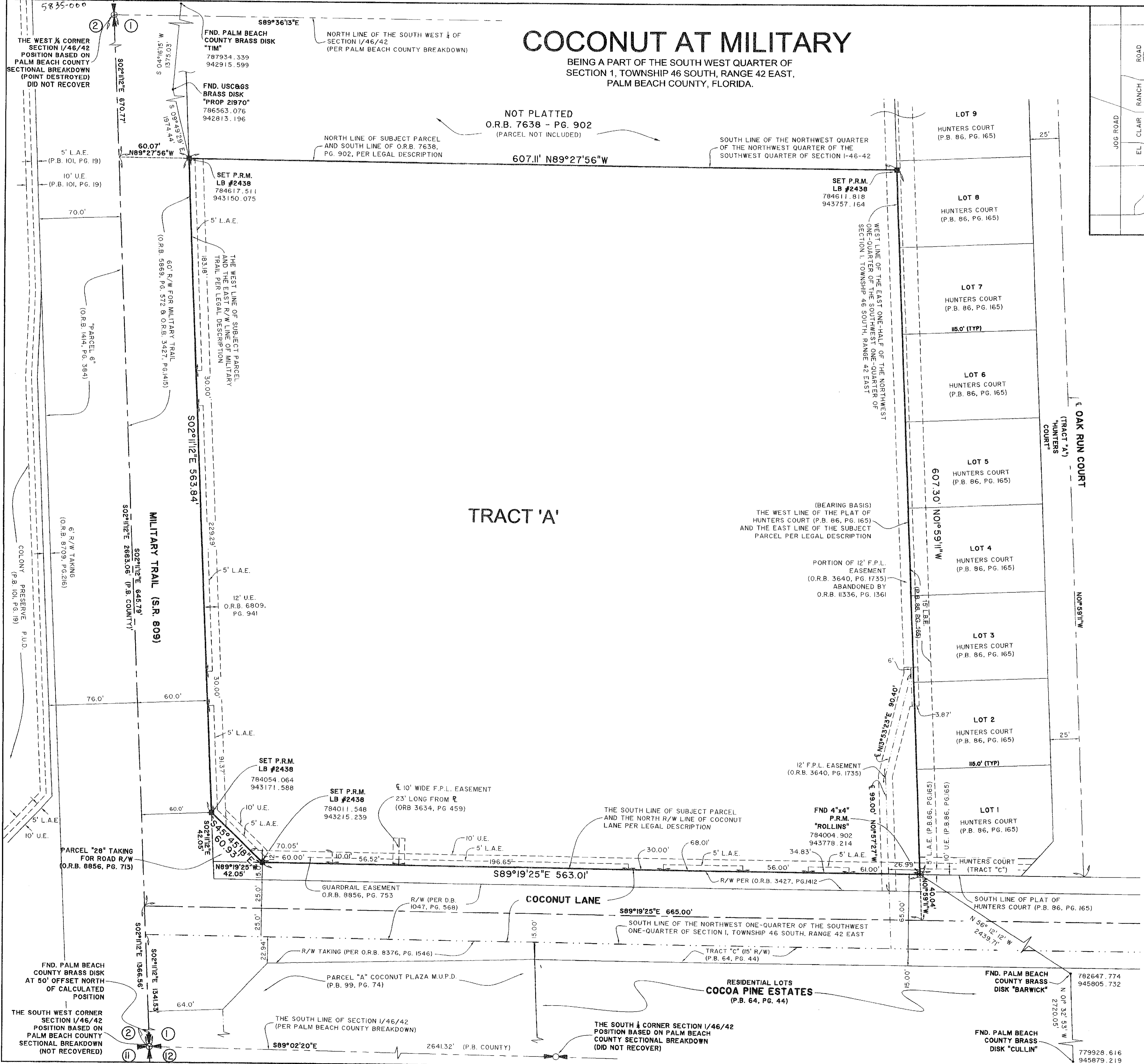
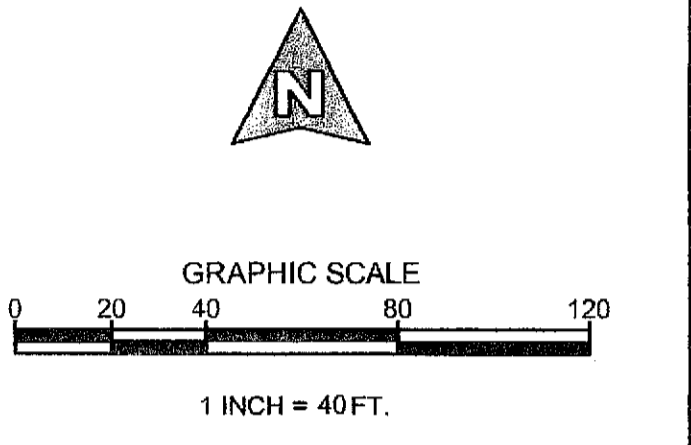
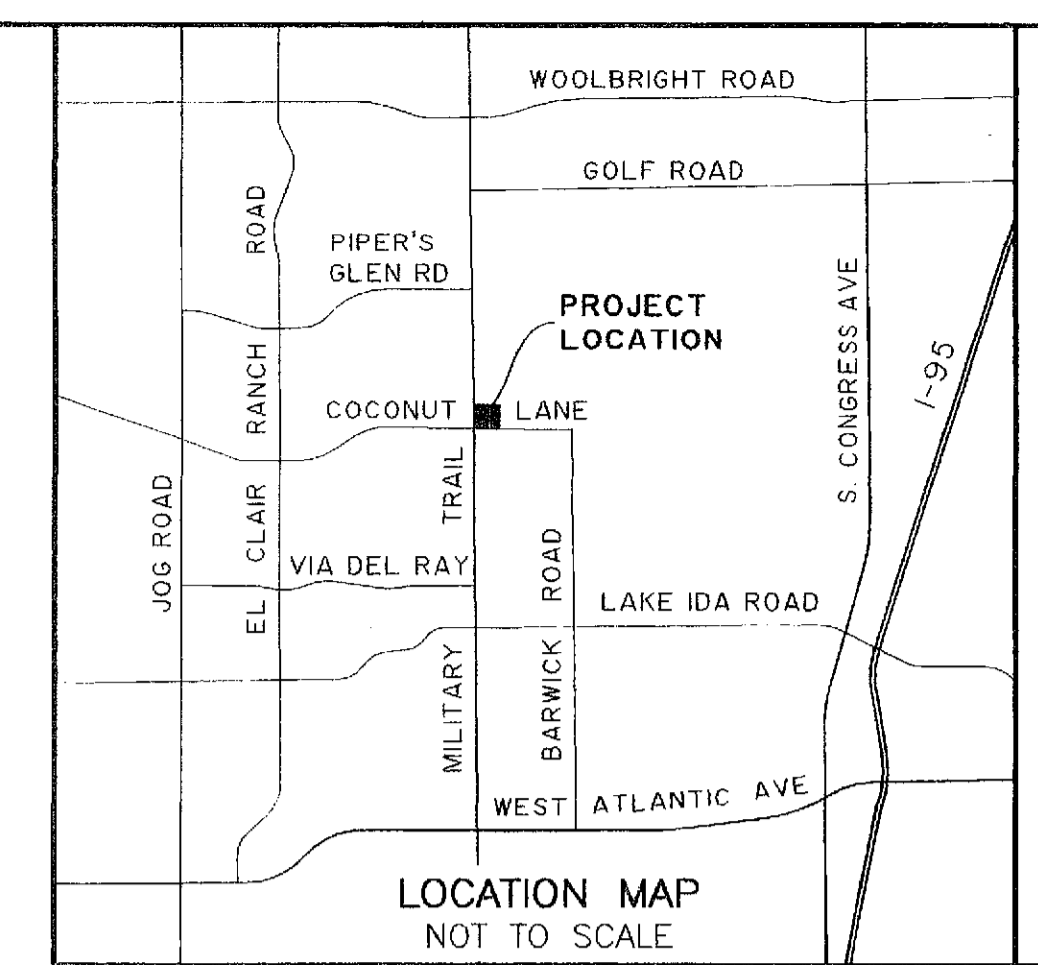
# COCONUT AT MILITARY

BEING A PART OF THE SOUTH WEST QUARTER OF SECTION 1, TOWNSHIP 46 SOUTH, RANGE 42 EAST, PALM BEACH COUNTY, FLORIDA.

NOT PLATTED  
O.R.B. 7638 - PG. 902  
(PARCEL NOT INCLUDED)

# 109

COUNTY OF PALM BEACH )  
STATE OF FLORIDA ) SS  
THIS PLAT WAS FILED FOR RECORD AT \_\_\_\_\_ M. THIS \_\_\_\_\_ DAY OF \_\_\_\_\_, 20\_\_\_\_, AND DULY RECORDED IN PLAT BOOK NO. \_\_\_\_\_ ON PAGE \_\_\_\_\_ THRU \_\_\_\_\_  
SHARON R. BOCK,  
CLERK AND COMPTROLLER  
BY: \_\_\_\_\_, D.C.

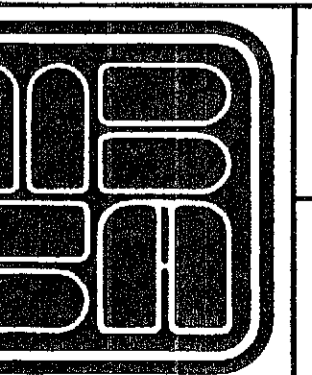


- LEGEND**
- PERMANENT REFERENCE MONUMENT
  - P.R.M. L.B. #2438
  - W.S.E. WATER SEWER EASEMENT
  - L.S.E. LIFT STATION EASEMENT
  - W.M.E. WATER MAIN EASEMENT
  - G.U.E. GENERAL UTILITY EASEMENT
  - M.T.E. MASS TRANSIT EASEMENT
  - P.R.M. PERMANENT REFERENCE MONUMENT
  - FND. FOUND
  - CL. CENTERLINE
  - PL. PROPERTY LINE
  - D.E. DRAINAGE EASEMENT
  - F.P.L. FLORIDA POWER AND LIGHT
  - P.O.B. POINT OF BEGINNING
  - P.O.C. POINT OF COMMENCEMENT
  - P.B. PLAT BOOK
  - O.R.B. OFFICIAL RECORD BOOK
  - PG. PAGE
  - L.W.D.D. LAKE WORTH DRAINAGE DISTRICT
  - R/W. RIGHT-OF-WAY
  - FND. 4"x4" CONCRETE
  - P.R.M. "ROLLINS"
  - L.B.E. LANDSCAPE BUFFER EASEMENT
  - US&GS UNITED STATES COAST & GEODETIC SURVEY
  - L.A.E. LIMITED ACCESS EASEMENT

**COORDINATE NOTE:**

STATE PLANE COORDINATES SHOWN ARE GRID DATUM-NAD 83, 1980  
ADJUSTMENT ZONE: FLORIDA EAST  
COORDINATE SYSTEM: 1983 STATE PLANE, TRANSVERSE MERCATOR PROJECTION.  
LINEAR UNITS: U.S. SURVEY FEET  
ALL DISTANCES ARE GROUND  
SCALE FACTOR: 1.0000357  
GROUND DISTANCE X SCALE FACTOR = GRID DISTANCE

N 01°59'11" W (PLAT BEARING)      00°00'00" = CLOCKWISE BEARING ROTATION (PLAT TO GRID)  
N 01°59'11" W (GRID BEARING)



**MICHAEL B. SCHORAH & ASSOCIATES, INC.**  
1860 FOREST HILL BLVD., SUITE 206  
WEST PALM BEACH, FLORIDA 33406  
EB# 2438 TEL. (561) 968-0080 FAX. (561) 642-9728 LB# 2438

## COCONUT AT MILITARY