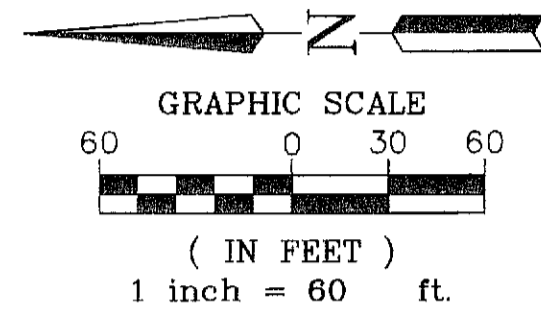


KID SANCTUARY

A REPLAT OF A PORTION OF LAND LYING IN TRACTS 24 AND 25, ALL IN BLOCK 12,
THE PALM BEACH FARMS COMPANY PLAT NO. 3, PLAT BOOK 2, PAGE 45 THROUGH 54 PUBLIC RECORDS
OF PALM BEACH COUNTY, FLORIDA, SECTION 5, TOWNSHIP
44 SOUTH, RANGE 42 EAST, PALM BEACH COUNTY, FLORIDA
AUGUST 08, 2011

THIS PLAT WAS FILED FOR
RECORD
AT _____ M., THIS
DAY OF _____
2011, AND DULY RECORDED IN
PLAT
BOOK NO. _____
ON
PAGES _____ THROUGH _____
SHARON R. BOCK
CLERK AND COMPTROLLER,
PALM BEACH COUNTY
BY _____ D.C.



- PLAT NOTES:
1. BEARINGS SHOWN HEREON ARE RELATIVE TO AN ASSUMED MERIDIAN. THE NORTH LINE OF TRACT 24, BLOCK 12 OF THE PALM BEACH FARMS COMPANY PLAT NO. 3, IS ASSUMED TO BEAR N89°58'48"E.
 2. THE COORDINATES SHOWN HEREON ARE BASED ON THE FLORIDA COORDINATE SYSTEM, EAST ZONE, GRID NORTH, 1983 STATE PLANE TRANSVERSE MERCATOR PROJECTION, WITH THE NAD 83 1990 ADJUSTMENTS.
 3. THE DISTANCES SHOWN HEREON ARE GROUND DISTANCES, THE SCALE FACTOR USED IS 1.000025. GROUND DISTANCE X SCALE FACTOR = GRID DISTANCE. ROTATION = 00°58'47" PLAT TO GRID (COUNTER CLOCKWISE ROTATION).
 4. NO BUILDING OR ANY KIND OF CONSTRUCTION OR TREES OR SHRUBS SHALL BE PLACED ON ANY EASEMENT WITHOUT PRIOR WRITTEN CONSENT OF ALL EASEMENT BENEFICIARIES AND ALL APPLICABLE COUNTY APPROVALS OR PERMITS AS REQUIRED FOR SUCH ENCROACHMENTS.
 5. IN THOSE CASES WHERE EASEMENTS OF DIFFERENT TYPES CROSS OR COINCIDE, DRAINAGE EASEMENTS SHALL HAVE FIRST PRIORITY, UTILITY EASEMENTS SHALL HAVE SECOND PRIORITY, ACCESS EASEMENTS SHALL HAVE THIRD PRIORITY, AND ALL OTHER EASEMENTS SHALL BE SUBORDINATE TO THESE WITH THEIR PRIORITIES DETERMINED BY USE OF RIGHTS GRANTED.
 6. BUILDING SETBACK LINES SHALL BE IN ACCORDANCE WITH PALM BEACH COUNTY ZONING ORDINANCES.
 7. THIS PLAT, AS RECORDED IN ITS GRAPHIC FORM, IS THE OFFICIAL DEPICTION OF THE SUBDIVIDED LANDS DESCRIBED HEREIN AND WILL IN NO CIRCUMSTANCES BE SUPPLANTED IN AUTHORITY BY ANY OTHER GRAPHIC OR DIGITAL FORM OF THE PLAT. THERE MAY BE ADDITIONAL RESTRICTIONS THAT ARE NOT RECORDED ON THIS PLAT THAT MAY BE FOUND IN THE PUBLIC RECORDS OF THIS COUNTY.

LEGEND:

- ASPH. = ASPHALT
- C = CALCULATED
- C/L = CENTERLINE
- C.M. = CONCRETE MONUMENT = □
- D = DESCRIPTION
- D.B. = DEED BOOK
- ENC. = ENCROACHMENT
- ESMT. = EASEMENT
- EXIST. = EXISTING
- F.C.M. = FOUND CONCRETE
- F.I.P. = FOUND IRON PIPE
- F.I.R. = FOUND IRON ROD
- F.P.K. = FOUND PARKER-KALON NAIL
- GB = GRID BEARING
- GD = GROUND DISTANCE
- LB = LICENSED BUSINESS # 2992
- M = FIELD MEASUREMENT
- M.H. = MANHOLE
- MON = MONUMENT
- N&D = NAIL AND DISK
- O.R.B. = OFFICIAL RECORD BOOK
- P = PLAT DIMENSION
- P.B. = PLAT BOOK
- PC = POINT OF CURVATURE
- P.C.P. = PERMANENT CONTROL POINT
- PG. = PAGE
- P.O.B. = POINT OF BEGINNING
- P.O.C. = POINT OF COMMENCEMENT
- P.R.M. = POINT OF BEGINNING MONUMENT
4"x4" CONCRETE MONUMENT STAMPED P.R.M. LB 2992
- P.S.M. = PROFESSIONAL SURVEYOR AND MAPPER
- R = RADIUS
- RAW = RIGHT OF WAY
- S.F. = SQUARE FEET
- S.P.K. = SET PARKER-KALON NAIL
- S.5/8" I.R. = SET 5/8" IRON ROD AND CAP #2992
- TYP. = TYPICAL
- W.C. = WITNESS CORNER
- Δ = CENTRAL ANGLE/Delta

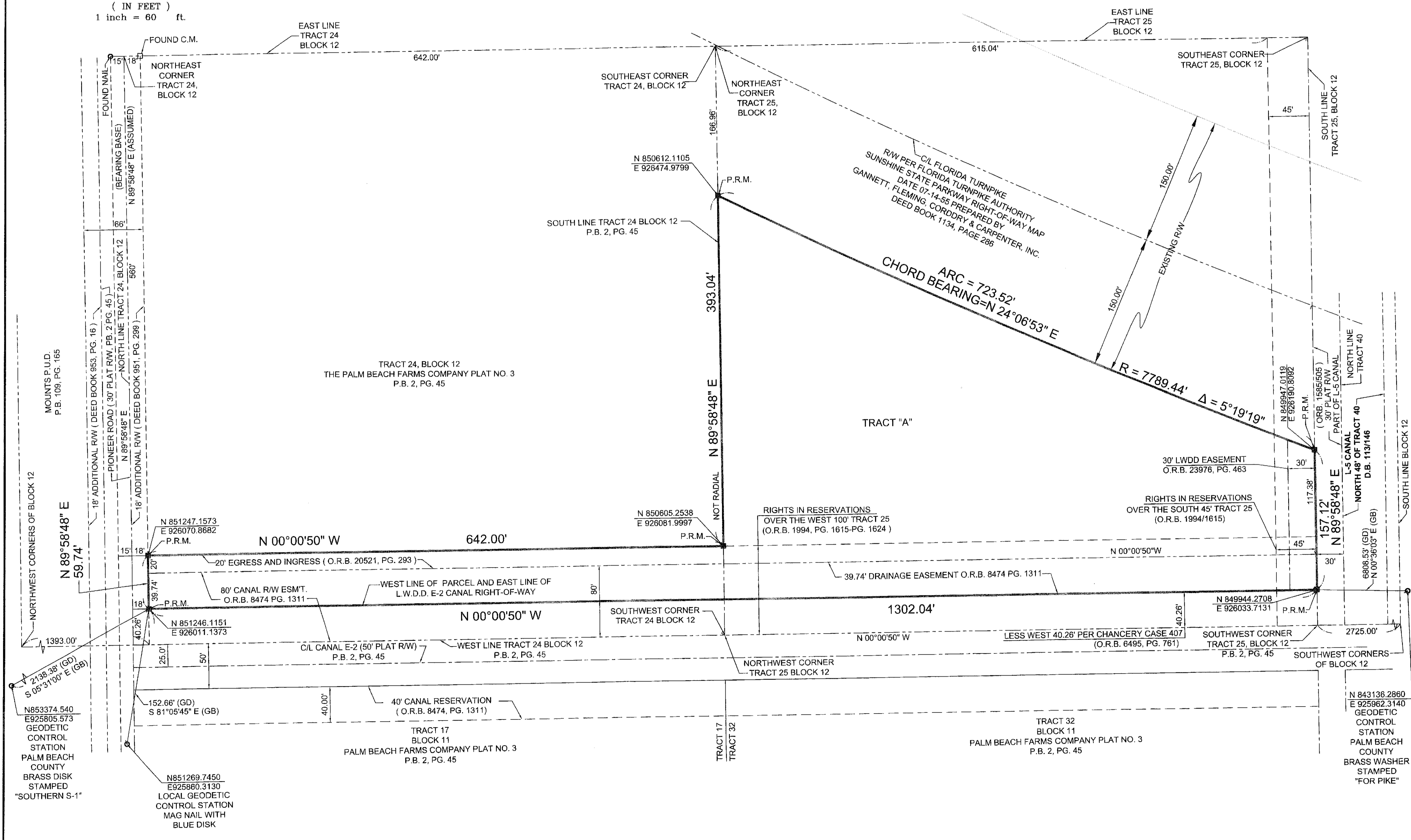
PREPARED BY: ROBERT D. WHITEHEAD

TRIANGLE
LAND SURVEYING, INC.
SURVEYING TO
SPECIFICATION
LB # 2992

6483 Royal Palm
Beach Boulevard
W. Palm Beach, FL 33412
561.798-3966 (phone)
561.791-8777 (fax)
triangle2992@gmail.com

17944

SHEET 2 OF 2 SHEETS



N853374.540
E925805.573
GEODETIC
CONTROL
STATION
PALM BEACH
COUNTY
BRASS DISK
STAMPED
"SOUTHERN S-1"

N851269.7450
E925860.3130
LOCAL GEODETIC
CONTROL STATION
MAG NAIL WITH
BLUE DISK

TRACT 17
BLOCK 11
PALM BEACH FARMS COMPANY PLAT NO. 3
P.B. 2, PG. 45

TRACT 32
BLOCK 11
PALM BEACH FARMS COMPANY PLAT NO. 3
P.B. 2, PG. 45

N 843136.2860
E 925962.3140
GEODETIC
CONTROL
STATION
PALM BEACH
COUNTY
BRASS WASHER
STAMPED
"FOR PIKE"