

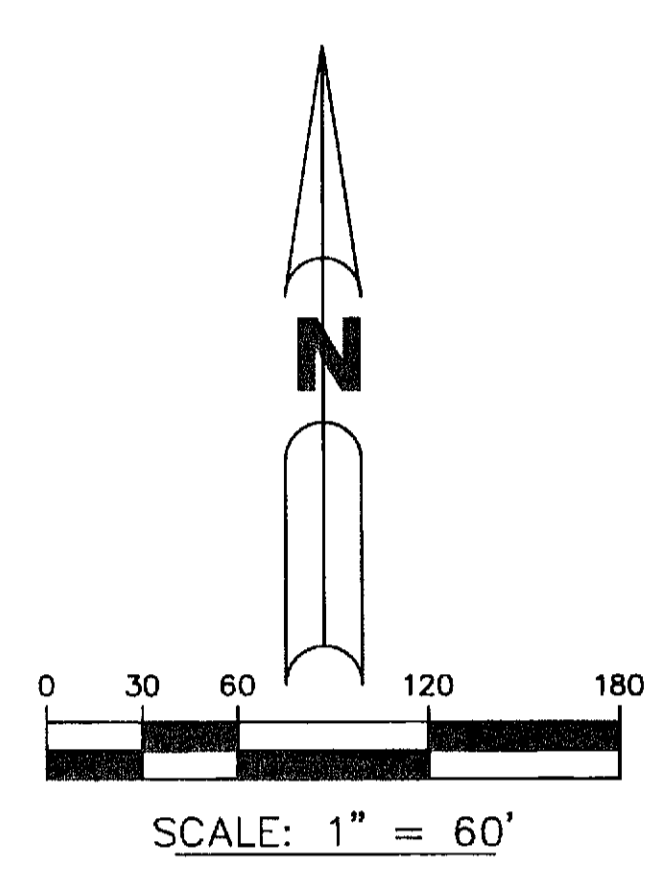
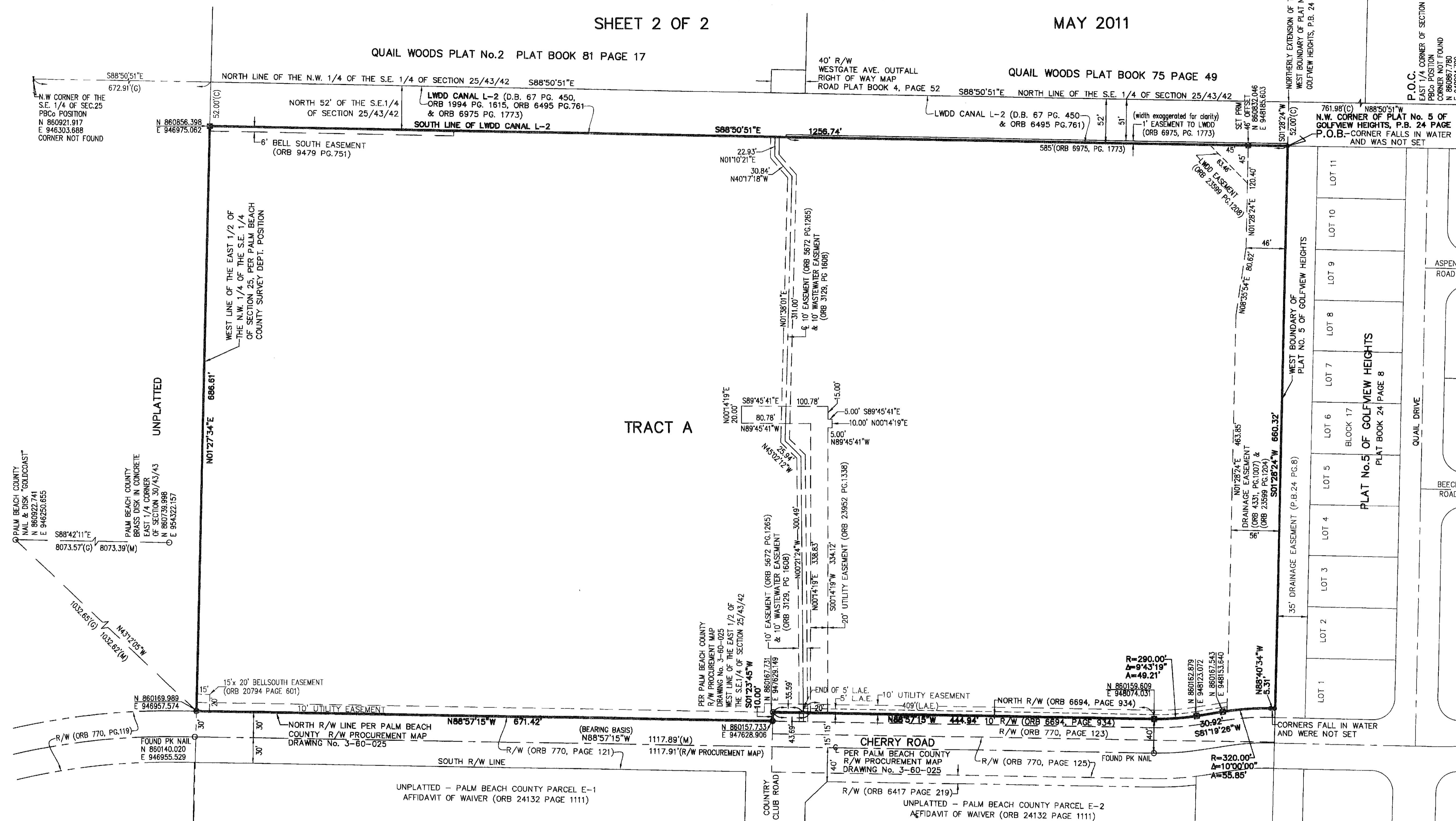
# CHERRY ROAD COMPLEX PLAT

LYING IN THE SOUTHEAST QUARTER OF SECTION 25,  
TOWNSHIP 43 SOUTH, RANGE 42 EAST, PALM BEACH COUNTY, FLORIDA

SHEET 2 OF 2

MAY 2011

# 115



THIS INSTRUMENT WAS PREPARED BY  
**BROWN & PHILLIPS, INC.**  
 CERTIFICATE OF AUTHORIZATION # LB 6473  
 901 NORTHPOINT PKWY., SUITE 119  
 WEST PALM BEACH, FLORIDA 33407  
 561-615-3988, 615-3986 FAX