

THIS INSTRUMENT WAS PREPARED BY:
DOUGLAS M. DAVIE, P.S.M. #4343 OF
CRAVEN THOMPSON & ASSOCIATES, INC.
 ENGINEERS • PLANNERS • SURVEYORS
 3561 N.W. 53RD STREET FORT LAUDERDALE, FLORIDA 33309
 TEL.: (954) 738-6400 FAX: (954) 738-6408
 OCTOBER 2010 98-0037

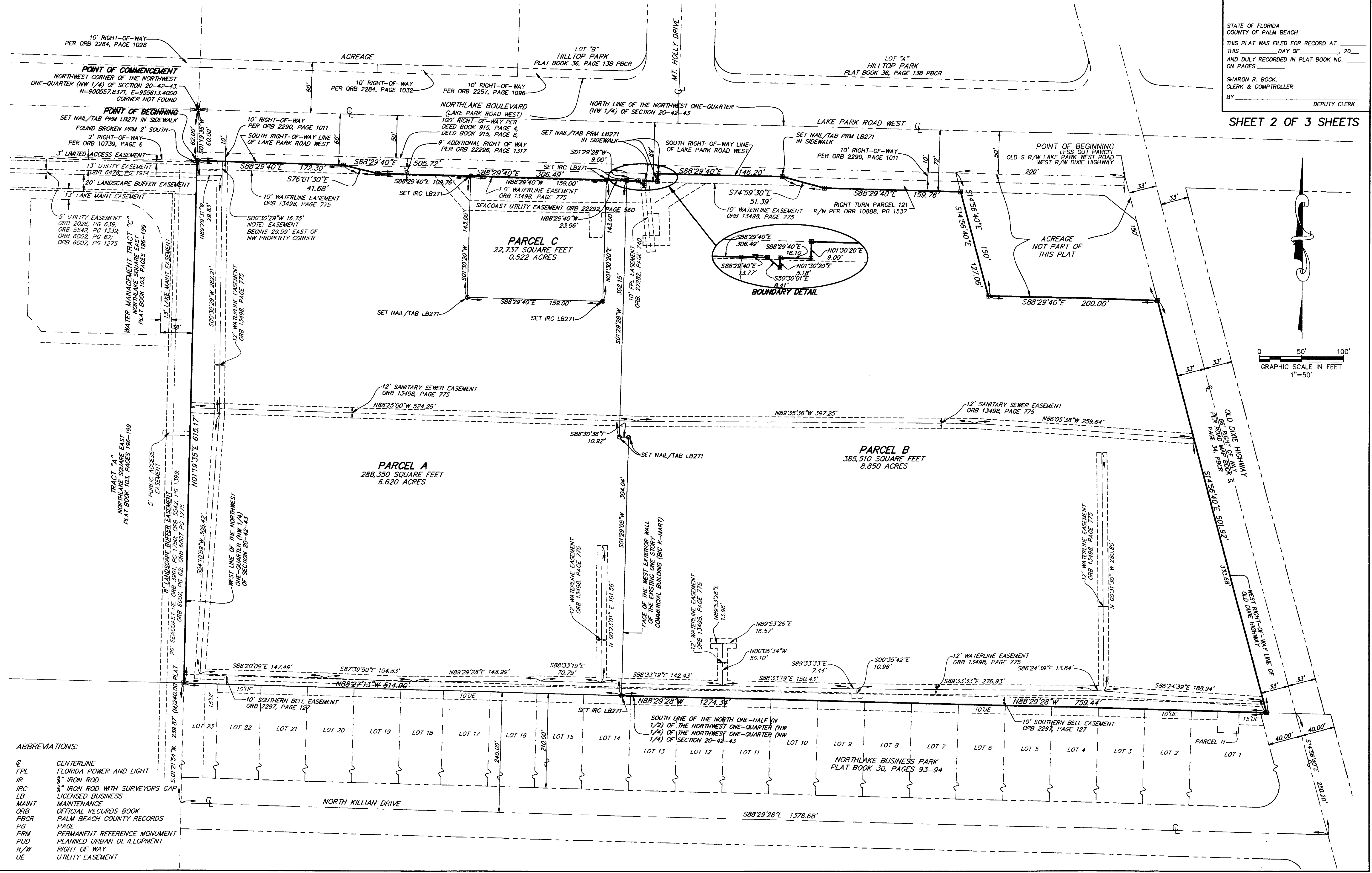
PLAZA AT LAKE PARK, A P.U.D.

A PLAT OF A PORTION OF THE NORTH ONE-HALF (N 1/2) OF THE NORTHWEST ONE-QUARTER (NW 1/4) OF THE
 NORTHWEST ONE-QUARTER (NW 1/4) OF SECTION 20, TOWNSHIP 42 SOUTH, RANGE 43 EAST
 TOWN OF LAKE PARK, PALM BEACH COUNTY, FLORIDA

123

STATE OF FLORIDA
 COUNTY OF PALM BEACH
 THIS PLAT WAS FILED FOR RECORD AT _____
 THIS _____ DAY OF _____, 20____
 AND DULY RECORDED IN PLAT BOOK NO. _____
 ON PAGE _____
 SHARON R. BOCK,
 CLERK & COMPTROLLER
 BY _____ DEPUTY CLERK

SHEET 2 OF 3 SHEETS



ABBREVIATIONS:
 C CENTERLINE
 FPL FLORIDA POWER AND LIGHT
 IR IRON ROD
 IRC IRON ROD WITH SURVEYORS CAP
 LB LICENSED BUSINESS
 MAINT MAINTENANCE
 ORB OFFICIAL RECORDS BOOK
 PBCR PALM BEACH COUNTY RECORDS
 PG PAGE
 PRM PERMANENT REFERENCE MONUMENT
 PUD PLANNED URBAN DEVELOPMENT
 R/W RIGHT OF WAY
 UE UTILITY EASEMENT