

**LINE TABLE**

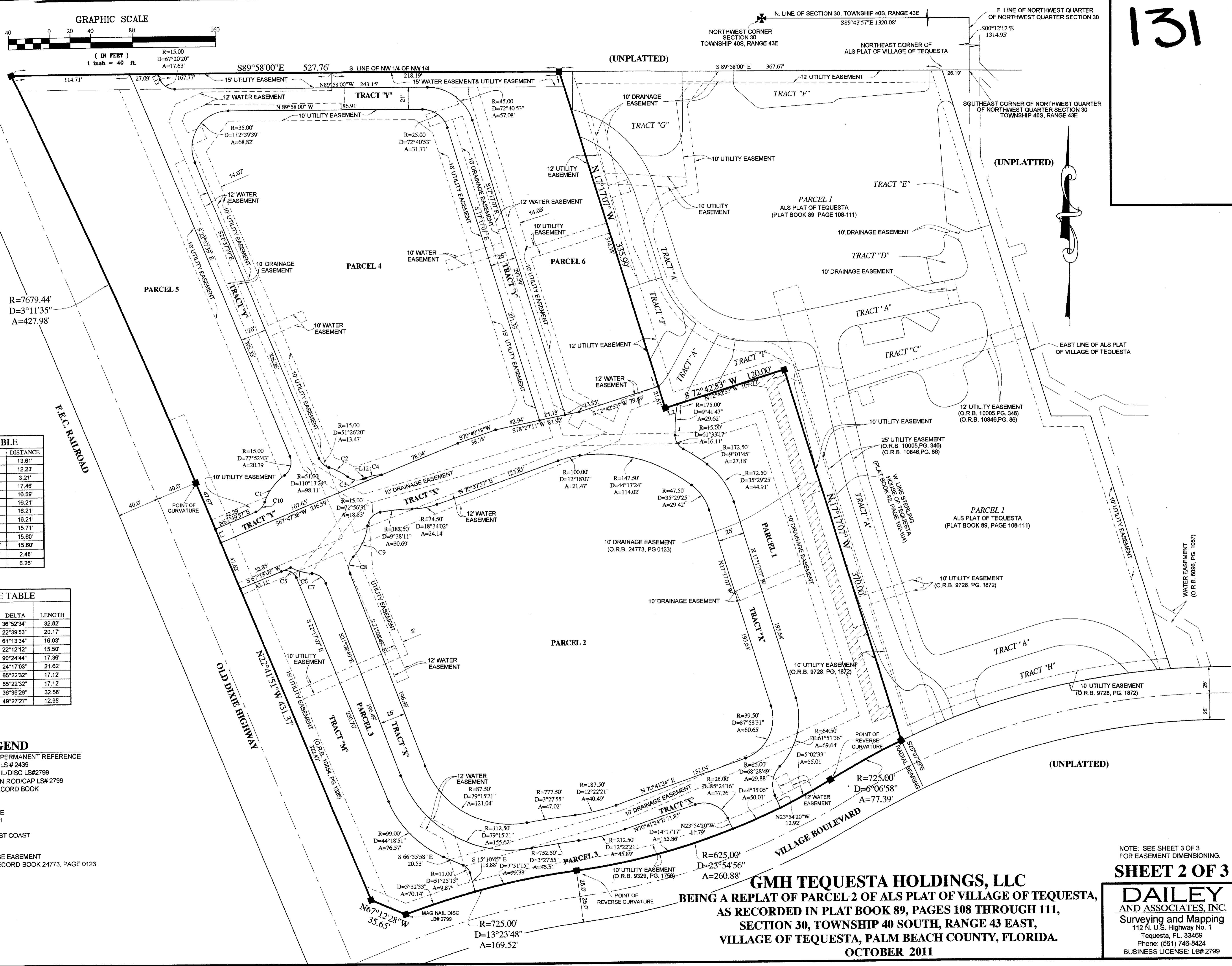
LINE	BEARING	DISTANCE
L1	S22°41'51"E	13.61'
L2	N72°42'53"E	12.23'
L3	S22°17'07"E	3.21'
L4	S80°28'29"E	17.46'
L5	N60°20'16"E	16.59'
L6	N72°42'53"E	16.21'
L7	N72°42'53"E	16.21'
L8	N72°31'10"E	16.21'
L9	S17°17'07"E	15.71'
L10	S17°17'07"E	15.60'
L11	N17°17'07"W	15.60'
L12	S67°22'21"W	2.48'
L13	S22°37'38"E	6.26'

**CURVE TABLE**

CURVE	RADIUS	DELTA	LENGTH
C1	51.00'	38°52'34"	32.82'
C2	51.00'	22°38'53"	20.17'
C3	15.00'	61°13'34"	16.03'
C4	40.00'	22°12'12"	15.50'
C5	11.00'	90°24'44"	17.36'
C6	51.00'	24°17'03"	21.62'
C7	15.00'	66°22'32"	17.12'
C8	15.00'	65°22'32"	17.12'
C9	51.00'	36°38'26"	32.58'
C10	15.00'	49°27'27"	12.95'

- LEGEND**
- SET (P.R.M.) PERMANENT REFERENCE MONUMENT LS # 2439
  - SET MAG NAIL/DISC LS# 2799
  - SET 5/8" IRON ROD/CAP LS# 2799
  - O.R.B. OFFICIAL RECORD BOOK
  - PG. PAGE
  - R RADIUS
  - D DELTA ANGLE
  - A ARC LENGTH
  - P.B. PLAT BOOK
  - F.E.C. FLORIDA EAST COAST

10' DRAINAGE EASEMENT OFFICIAL RECORD BOOK 24773, PAGE 0123.



**GMH TEQUESTA HOLDINGS, LLC**  
 BEING A REPLAT OF PARCEL 2 OF ALS PLAT OF VILLAGE OF TEQUESTA,  
 AS RECORDED IN PLAT BOOK 89, PAGES 108 THROUGH 111,  
 SECTION 30, TOWNSHIP 40 SOUTH, RANGE 43 EAST,  
 VILLAGE OF TEQUESTA, PALM BEACH COUNTY, FLORIDA.  
 OCTOBER 2011

NOTE: SEE SHEET 3 OF 3 FOR EASEMENT DIMENSIONING.  
**SHEET 2 OF 3**  
**DAILEY AND ASSOCIATES, INC.**  
 Surveying and Mapping  
 112 N. U.S. Highway No. 1  
 Tequesta, FL 33469  
 Phone: (561) 746-8424  
 BUSINESS LICENSE: LB# 2799