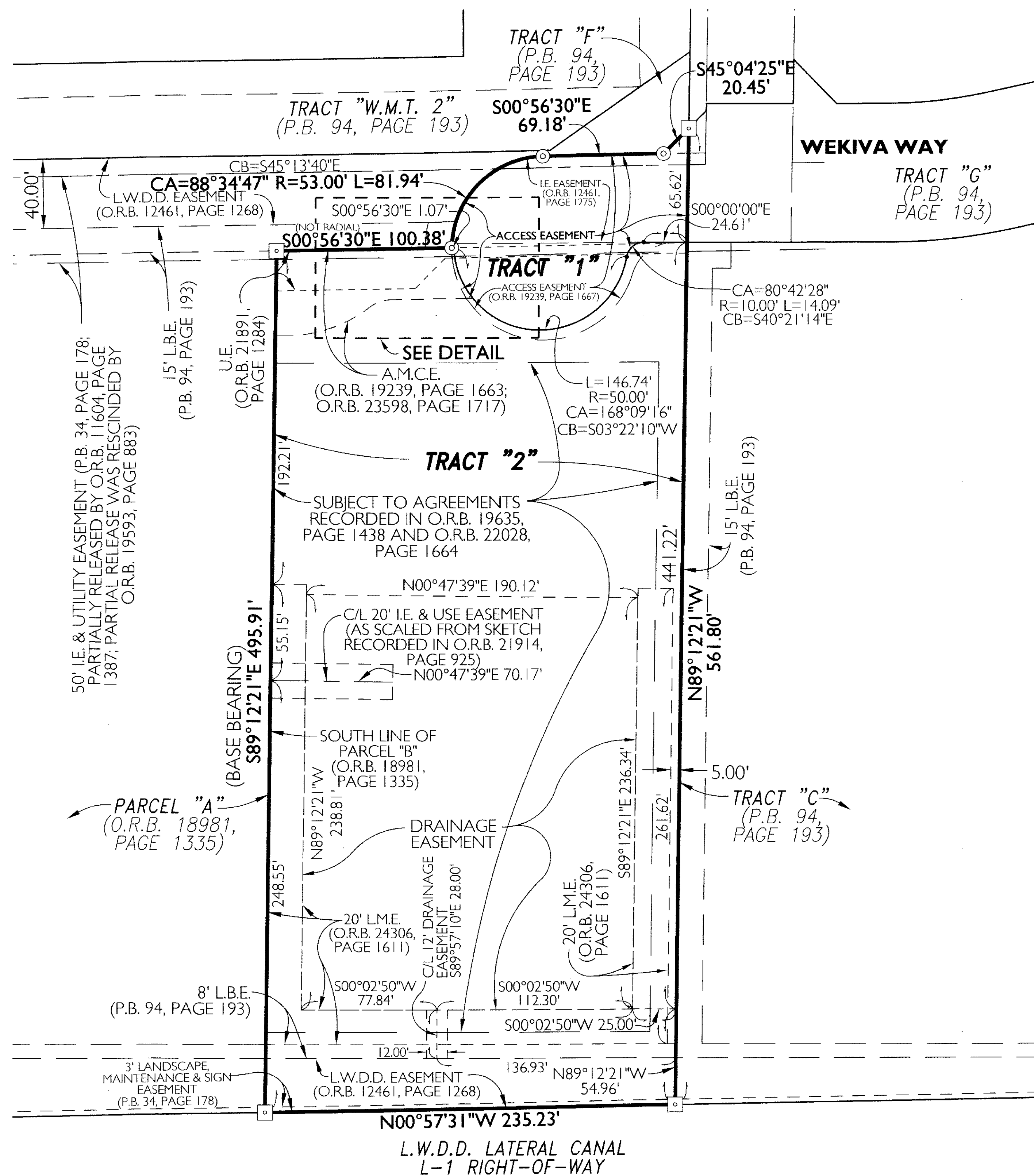
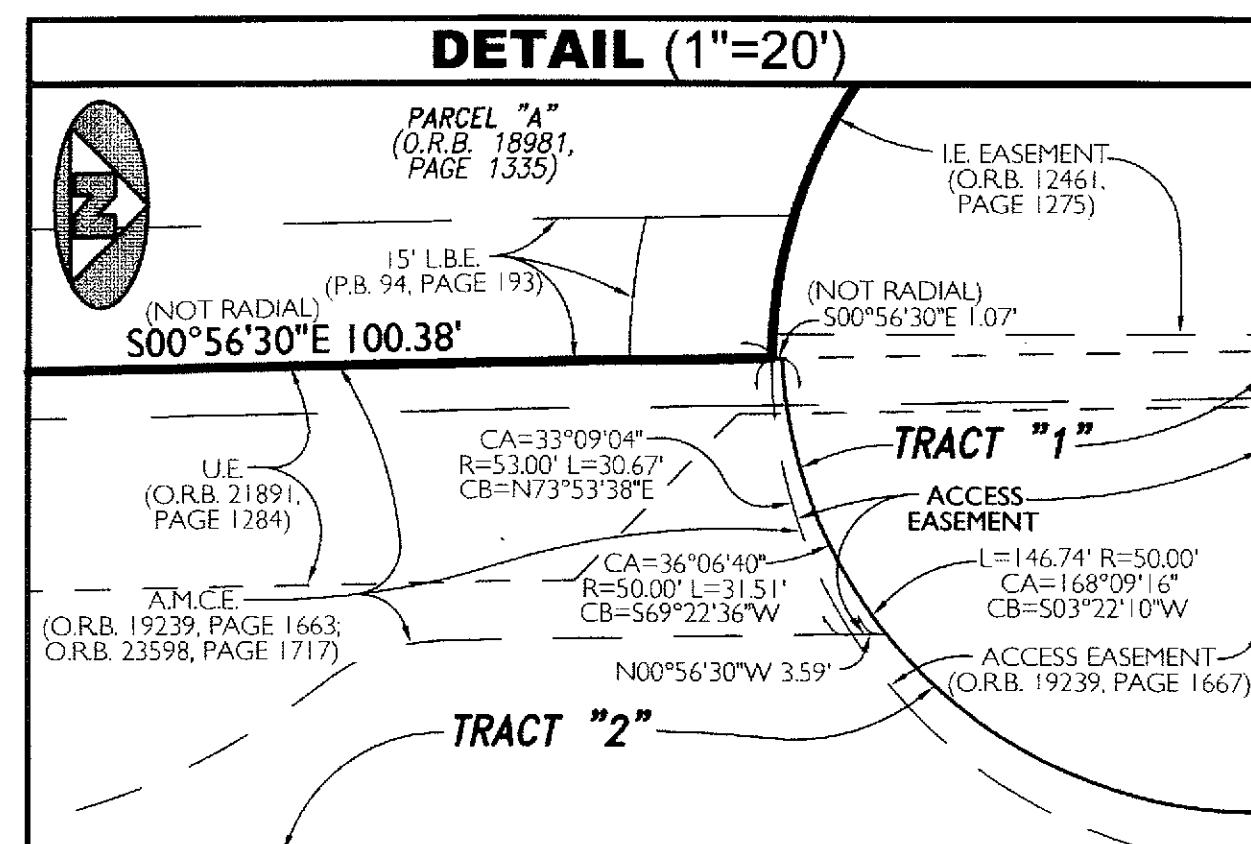
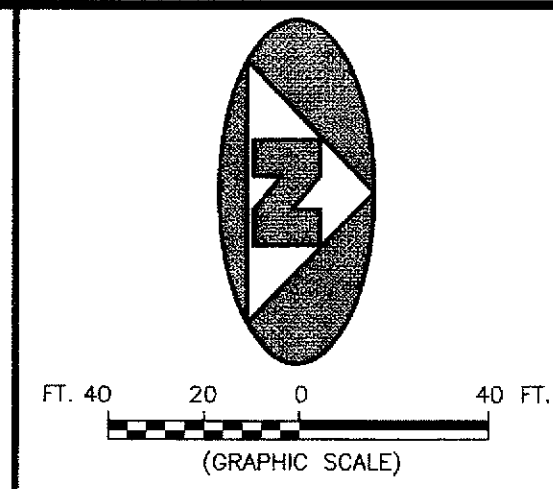


BEING A REPLAT OF PARCEL "B", OF MINOR SUBDIVISION PLAT OF "W.M.T. 3" AND TRACT "F", OKEECHOBEE BOULEVARD M.U.P.D., AS RECORDED IN OFFICIAL RECORDS BOOK 18981, PAGE 1335, PUBLIC RECORDS, PALM BEACH COUNTY, FLORIDA, AND TRACT "H", OKEECHOBEE BOULEVARD M.U.P.D., AS RECORDED IN PLAT BOOK 94, PAGE 193, PUBLIC RECORDS, PALM BEACH COUNTY, FLORIDA, AND LYING IN SECTION 28, TOWNSHIP 43 SOUTH, RANGE 42 EAST, CITY OF WEST PALM BEACH, PALM BEACH COUNTY, FLORIDA



LEGEND

- A.M.C.E. = ACCESS, MAINTENANCE, AND CONSTRUCTION EASEMENT
- CA = CENTRAL ANGLE
- CB = CHORD BEARING
- C/L = CENTERLINE
- I.E. = INGRESS, EGRESS
- L = ARC LENGTH
- L.B.E. = LANDSCAPE BUFFER EASEMENT
- L.W.D.D. = LAKE WORTH DRAINAGE DISTRICT
- O.R.B. = OFFICIAL RECORDS BOOK
- P.B. = PLAT BOOK
- R = RADIUS
- U.E. = UTILITY EASEMENT
- W.M.A.E. = WATER MANAGEMENT ACCESS EASEMENT
- W.M.M.E. = WATER MANAGEMENT MAINTENANCE EASEMENT
- DENOTES A SET PERMANENT REFERENCE MONUMENT
- 4"x4" CONCRETE MONUMENT WITH BOLT AND DISK STAMPED "PRM LB 7344"
- DENOTES A SET PERMANENT REFERENCE MONUMENT
- MAG-NAIL & WASHER STAMPED "PRM LB 7344"

SURVEYOR'S NOTES

1. BEARINGS SHOWN HEREON ARE BASED ON THE SOUTH LINE OF PARCEL "B", MINOR SUBDIVISION PLAT OF "W.M.T. 3" AND TRACT "F", OKEECHOBEE BOULEVARD M.U.P.D., AS RECORDED IN OFFICIAL RECORDS BOOK 18981, PAGE 1335, PUBLIC RECORDS, PALM BEACH COUNTY, FLORIDA, HAVING A BEARING OF S89°12'21"E, AND ALL OTHER BEARINGS SHOWN HEREON ARE RELATIVE THERETO.
2. THIS INSTRUMENT WAS PREPARED BY STEPHEN L. SHIRLEY, PROFESSIONAL SURVEYOR AND MAPPER NO. 3918, IN AND FOR THE OFFICES OF ASSOCIATED LAND SURVEYORS, INC., 4152 WEST BLUE HERON BOULEVARD, SUITE 121, RIVIERA BEACH, FLORIDA, 33404



ASSOCIATED LAND SURVEYORS, INC.
 4152 W. BLUE HERON BOULEVARD—SUITE 121
 RIVIERA BEACH FLORIDA 33404 LB 7344
 PHONE: (561) 848-2102 FAX: (561) 844-9659 EMAIL: als@alssurvey.net

FILE: P253.B-Replat

SCALE: 1"=40' WO.NO.: P253.B
 DWN: BLS SHEET 2 OF 2