



SURVEYING & MAPPING  
Prepared by: Jeff S. Hodapp, P.S.M.  
Certificate of Authorization No. LB7264  
949A Clint Moore Road  
Boca Raton, Florida 33487  
Tel: (561) 241-9988  
Fax: (561) 241-5182

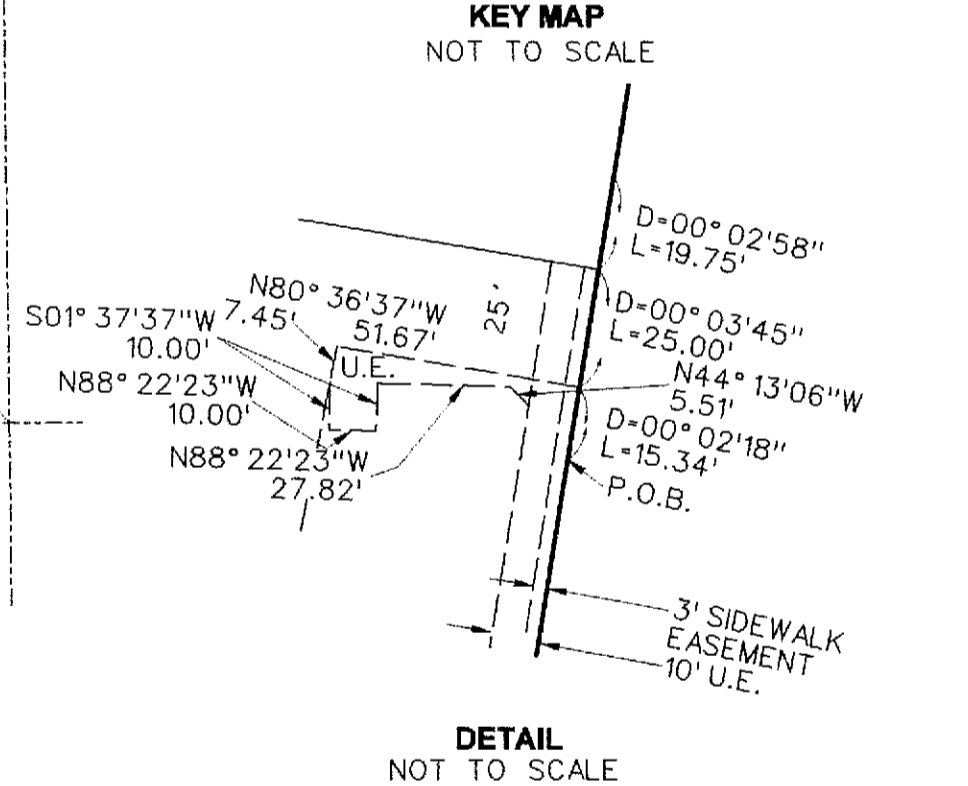
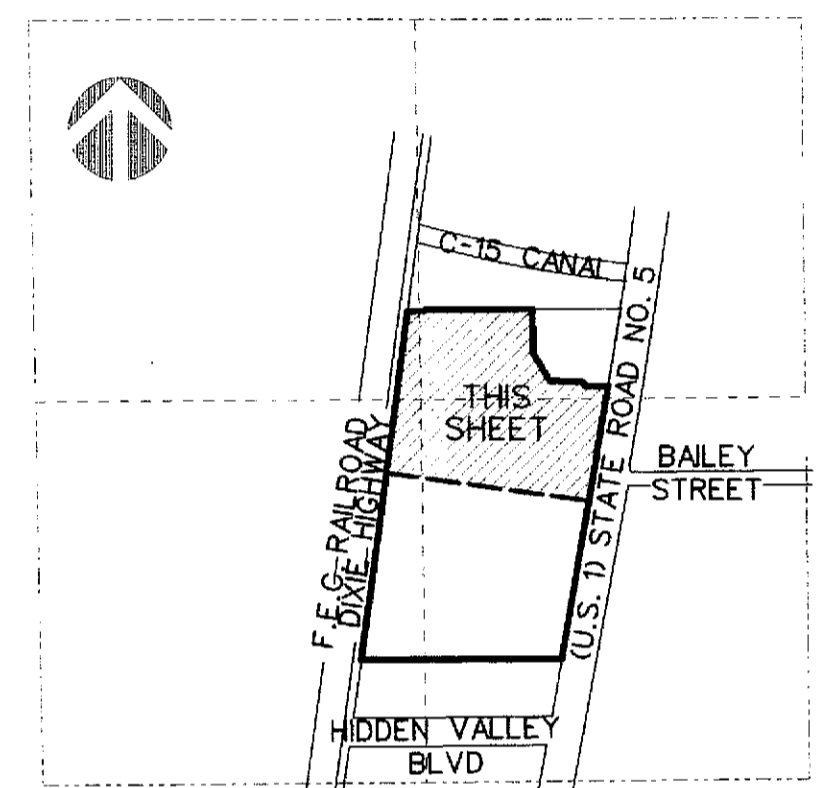
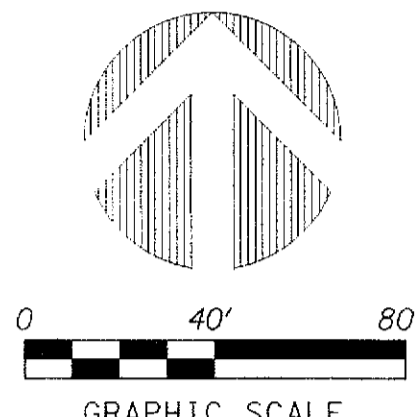
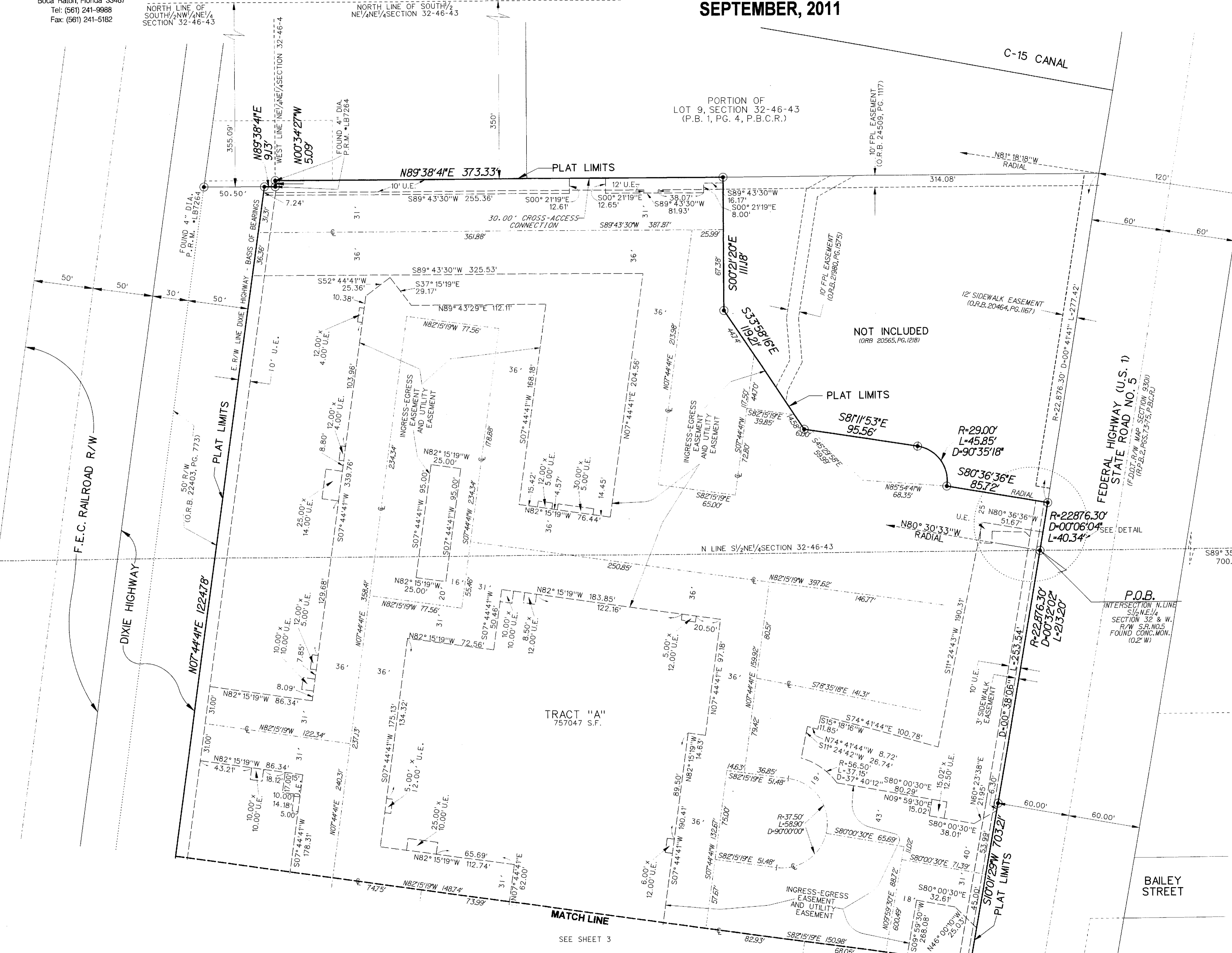
# BROADSTONE AT NORTH BOCA VILLAGE

A PORTION OF TRACTS 2, 3, 9, 10, 11 IN THE NORTHEAST ONE-QUARTER OF SECTION 32,  
TOWNSHIP 46 SOUTH, RANGE 43 EAST (P.B. 1, PG. 4, P.B.C.R.)  
CITY OF BOCA RATON, PALM BEACH COUNTY, FLORIDA.  
SEPTEMBER, 2011

N.E. CORNER  
SEC. 32-46-43  
(NOT FOUND)

149

SHEET 2 OF 3



- LEGEND:**
- SET P.R.M. (UNLESS OTHERWISE NOTED)-ALUMINUM DISK STAMPED •LB7264 IN 4" DIAMETER CONCRETE MONUMENT CENTERLINE
- ABBREVIATIONS:**
- CH CHORD
  - CHB CHORD BEARING
  - CONC. CONCRETE
  - COR. CORNER
  - D DELTA (CENTRAL ANGLE)
  - D.E. DRAINAGE EASEMENT
  - DIA. DIAMETER
  - AR. ARCLength
  - L.B. LICENSED BUSINESS
  - L.S. LICENSED SURVEYOR
  - MON. MONUMENT
  - N.R. NON-RADIAL
  - O.R.B. OFFICIAL RECORDS BOOK
  - P.B. PLAT BOOK
  - P.B.C.R. PALM BEACH COUNTY RECORDS
  - P.C. PAGE
  - P.C.P. PERMANENT CONTROL POINT
  - P.O.B. POINT OF BEGINNING
  - P.O.C. POINT OF COMMENCEMENT
  - P.P.M. PERMANENT REFERENCE MONUMENT
  - P.S.M. PROFESSIONAL SURVEYOR & MAPPER
  - R. RADIUS
  - R.F.W. RIGHT-OF-WAY
  - S. SECTION
  - S.F. SQUARE FEET
  - U.E. UTILITY EASEMENT

SEE SHEET 3