

PERIMETER

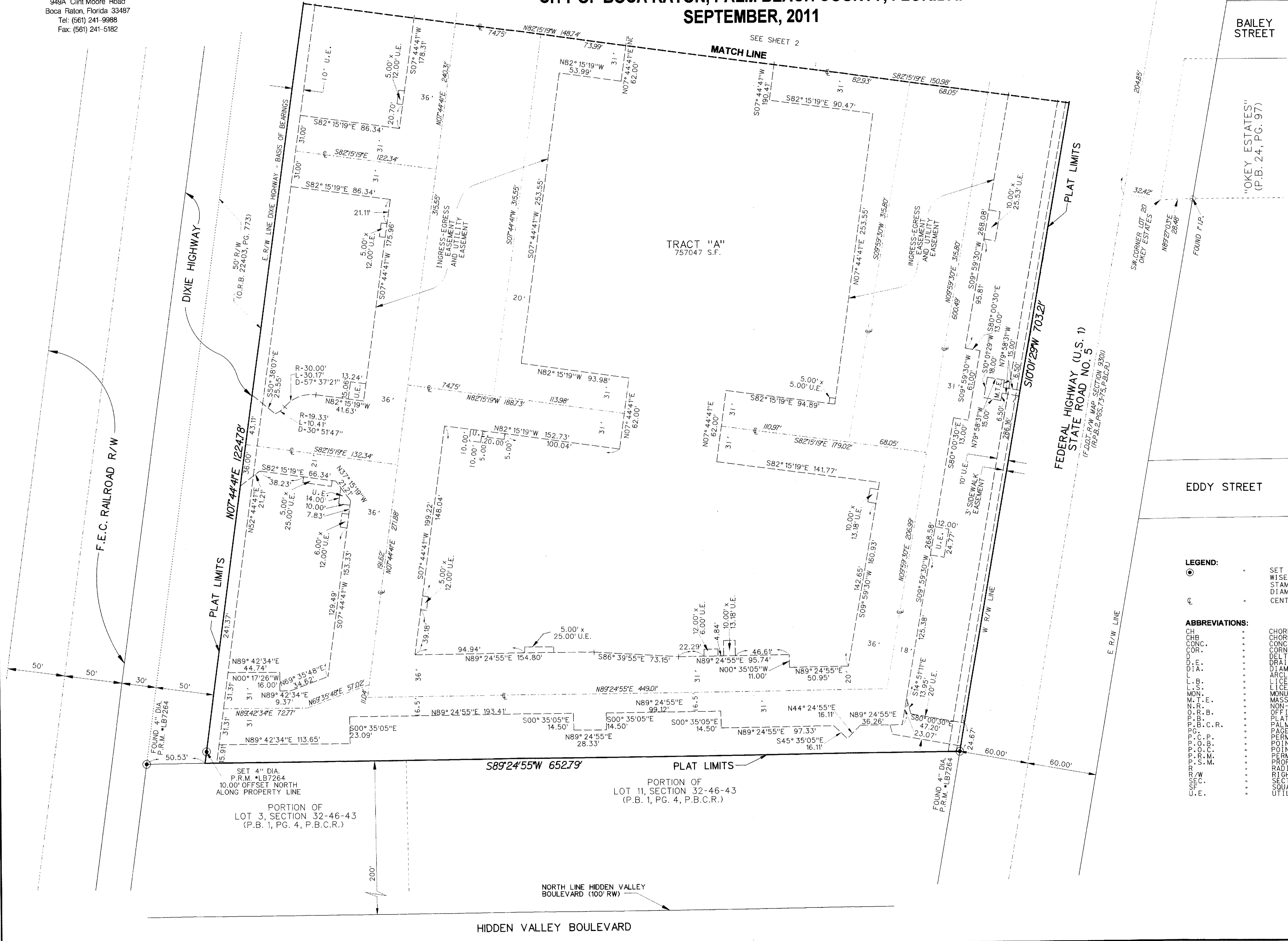
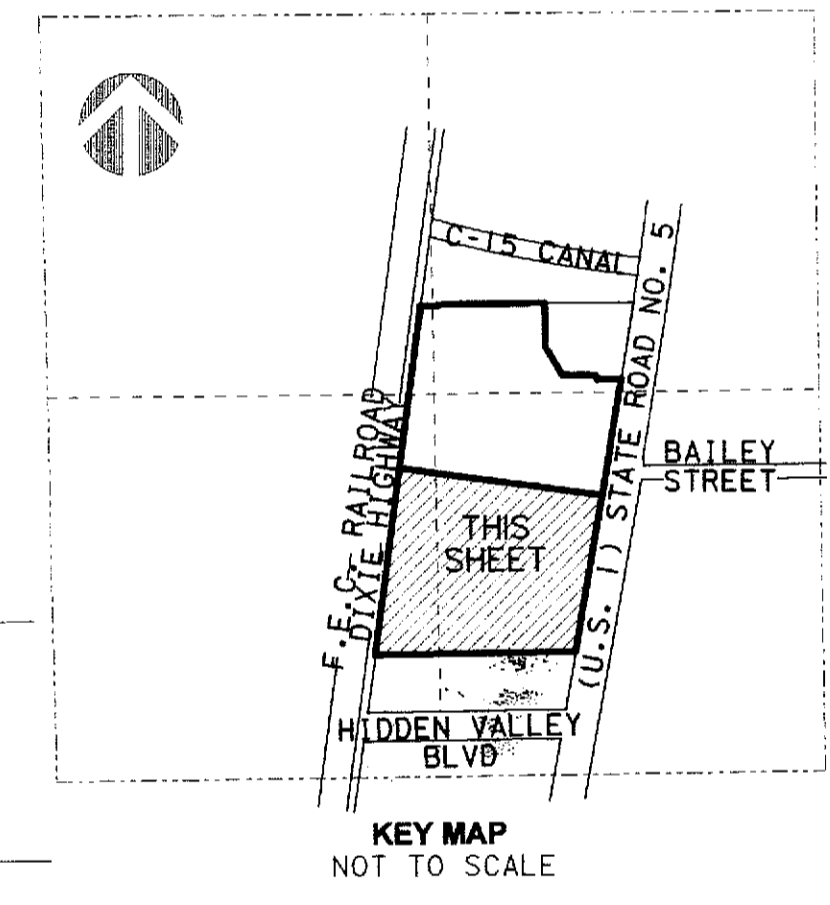
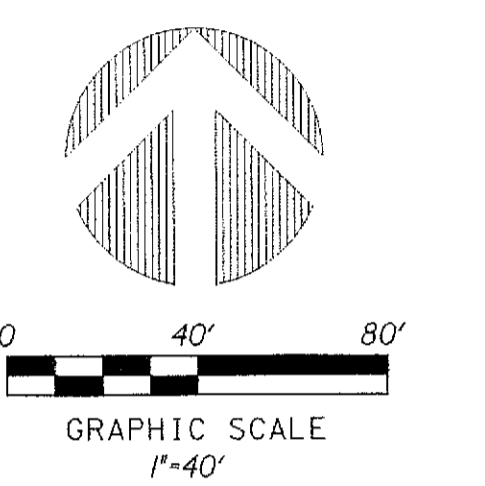
SURVEYING & MAPPING
 Prepared by: Jeff S. Hodapp, P.S.M.
 Certificate of Authorization No. LB7264
 949A Clint Moore Road
 Boca Raton, Florida 33487
 Tel: (561) 241-9988
 Fax: (561) 241-5182

BROADSTONE AT NORTH BOCA VILLAGE

A PORTION OF TRACTS 2, 3, 9, 10, 11 IN THE NORTHEAST ONE-QUARTER OF SECTION 32,
 TOWNSHIP 46 SOUTH, RANGE 43 EAST (P.B. 1, PG. 4, P.B.C.R.)
 CITY OF BOCA RATON, PALM BEACH COUNTY, FLORIDA.
 SEPTEMBER, 2011

150

SHEET 3 OF 3



- LEGEND:**
- SET P.R.M. (UNLESS OTHERWISE NOTED) - ALUMINUM DISK STAMPED *LB7264 IN 4" DIAMETER CONCRETE MONUMENT
 - ⊕ CENTERLINE
- ABBREVIATIONS:**
- CH CHORD
 - CHB CHORD BEARING
 - CONC. CONCRETE
 - COR. CORNER
 - Δ DELTA (CENTRAL ANGLE)
 - D.E. DRAINAGE EASEMENT
 - DIA. DIAMETER
 - ARC LENGTH
 - L.B. LICENSED BUSINESS
 - L.S. LICENSED SURVEYOR
 - MON. MONUMENT
 - M.T.E. MASS TRANSIT EASEMENT
 - N.R. NON-RADIAL
 - O.R.B. OFFICIAL RECORDS BOOK
 - P.B. PALM BEACH COUNTY RECORDS
 - P.C. PAGE
 - P.C.P. PERMANENT CONTROL POINT
 - P.O.B. POINT OF BEGINNING
 - P.O.C. POINT OF COMMENCEMENT
 - P.P.M. PERMANENT REFERENCE MONUMENT
 - P.S.M. PROFESSIONAL SURVEYOR & MAPPER
 - R. RADIUS
 - R/W RIGHT-OF-WAY
 - SEC. SECTION
 - S.F. SQUARE FEET
 - U.E. UTILITY EASEMENT